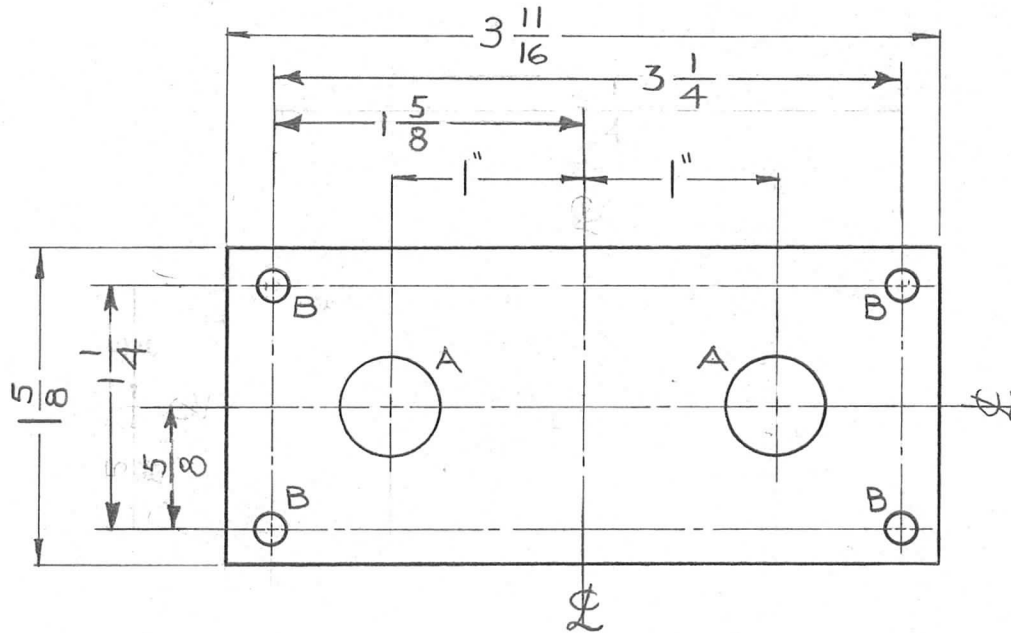


THE CONTENTS OF THIS DRAWING ARE THE EXCLUSIVE PROPERTY OF THE TECHNICAL MATERIEL CORP. ITS UNAUTHORIZED USE OR REPRODUCTION IN WHOLE OR IN PART IS STRICTLY FORBIDDEN.

REQ. PER UNIT	USED ON		
	MODEL	ASS'Y. NO.	DATE
1	RAK-22A(1)		6-1-62

PX-664



LEGEND		
HOLE	DESCRIPTION	REQ.
A	9/16 DIA.	2
B	5/32 DIA.	4

							REQ.	ITEM	PART NO.	R. KOHN	DESCRIPTION	SYMBOL	
									1/8		THE TECHNICAL MATERIEL CORP.		
									STOCK SIZE		MAMARONECK, NEW YORK		
									PHENOLIC		BOARD, MOUNTING		
									MATERIAL		ANTENNA JACKS		
SYM	DESCRIPTION	DATE	CH. NO.	DRAFTS	CHECKER	ENG. APP.			XXXXP	G.S.	<i>file</i>	<i>BP</i>	
UNLESS OTHERWISE SPECIFIED:		SCALE: FULL											
DIMENSIONS ARE IN INCHES		MAXIMUM ALLOWABLE TOLERANCES HAVE BEEN DETERMINED AND ANY DEVIATIONS WILL BE CAUSE FOR REJECTION.											
TOLERANCES ON		REMOVE ALL BURRS AND SHARP EDGES											
FRAC. ± 1/64 DEC. ± .005 ANGLES ± 1/2°										NATURAL	RK	RK	PX-664
										FINISH & SPEC. NO.	ELEC. DES. APP.	MECH. DES. APP.	