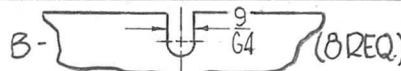


HOLES - A - 9/64 DIA. (4 REQ.)



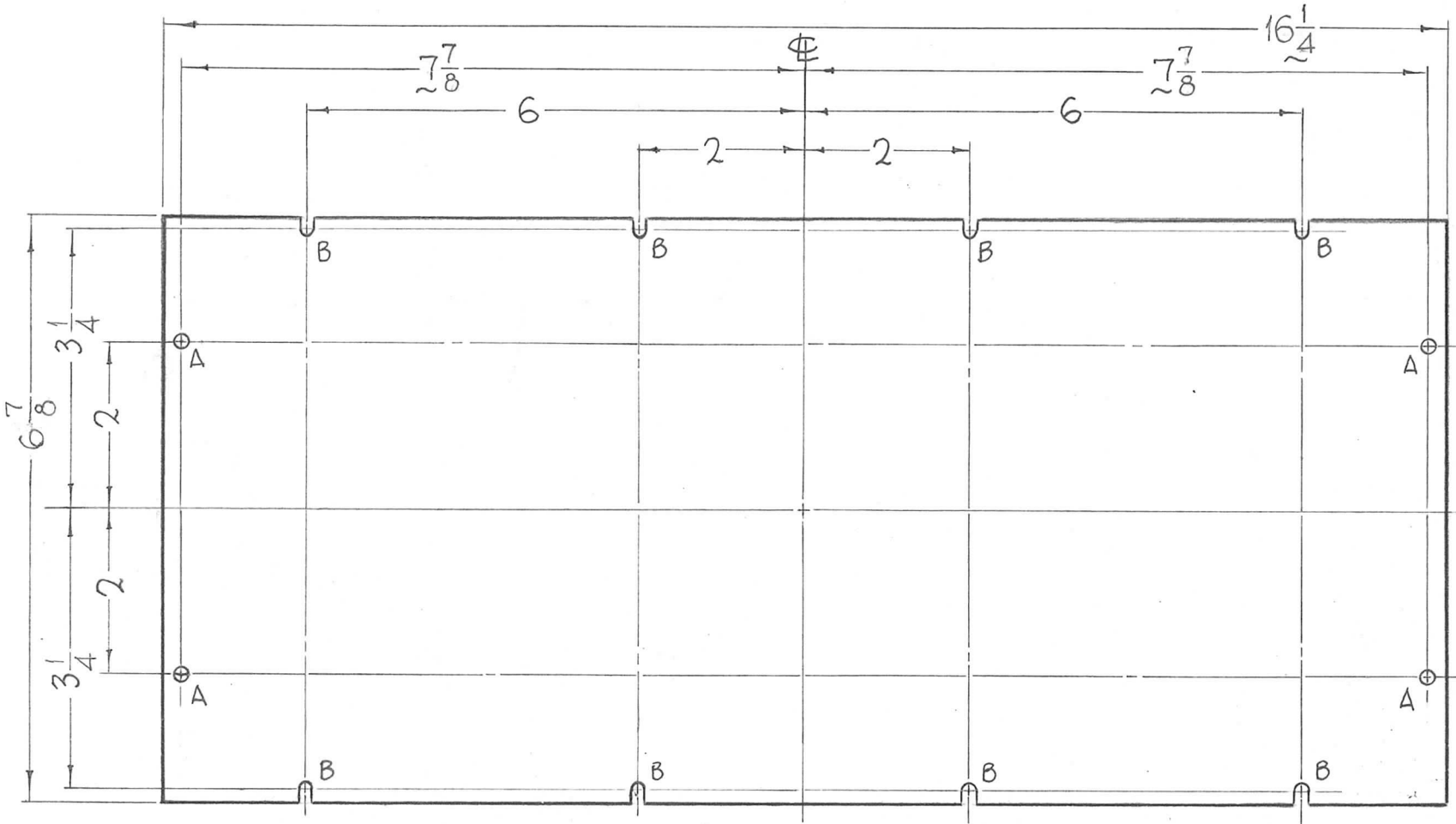
REQ. PER UNIT  
1

MODEL  
GPT-200K

USED ON  
ASS'Y. NO.  
AT-105

DATE  
9-11-63

PX-777 A



SYM		DESCRIPTION	DATE	CH. NO.	DRAFTS	CHECKER	ENG. APP.	REQ. ITEM	PART NO.	F. BUDETTI	DESCRIPTION	SYMBOL			
A		6 7/8 WAS 7 1/6	6-25-63	14327	DKV	JCB					<b>THE TECHNICAL MATERIEL CORP.</b> MAMARONECK, NEW YORK WINDOW, FRONT PANEL P/S-B	PX-777 A			
O		ORIGINAL RELEASE FOR PRODUCTION	5-13-64	O	A.M.										
XI		7-7/8 WAS 7-1/2, 16 1/4 WAS 15-1/2	10-23-63												
UNLESS OTHERWISE SPECIFIED DIMENSIONS ARE IN INCHES AND INCLUDE CHEMICALLY APPLIED OR PLATED FINISHES								SCALE 1/2" = 1"		John C. Biele					
DECIMALS .X ± .05 .XX ± .01 .XXX ± .005								TOLERANCES FRACTIONS ± 1/64 ANGLES ± 0° 30'		CODE A		TYPE & TEMPER CLEAR		HEAT TREAT. SPEC. DRAWN CHECKED FINAL APPROVAL	
								FINISH & SPEC. NO.		ELEC. DES. APP.		MECH. DES. APP.			