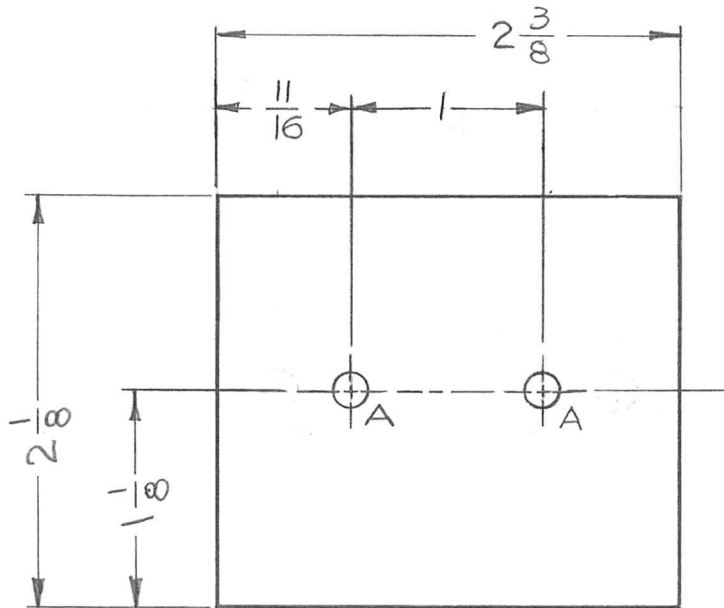


REQ. PER UNIT	USED ON			PX-831	A
	MODEL	ASS'Y. NO.	DATE		
1	GPR-92	P/S	10-9-63		



LEGEND		
HOLE	DESCRIPTION	REQ.
A	3/16 DIA	2

REF: LD-1397

REQ.	ITEM	PART NO.	GELLMAN	DESCRIPTION	SYMBOL			
		1/16 THICK		THE TECHNICAL MATERIEL CORP.				
		STOCK SIZE		MAMARONECK, NEW YORK				
A	'A' HOLES RELOCATED 11/16 WAS 5/16, 1 WAS 1 3/4	5-26-64 11426	A.M.	COVER, TERMINAL BOARD				
				MACHINING				
SYM	DESCRIPTION	DATE	CH. NO.	DRAFTS	CHECKER	ENG. APP.		
	UNLESS OTHERWISE SPECIFIED DIMENSIONS ARE IN INCHES AND INCLUDE CHEMICALLY APPLIED OR PLATED FINISHES	SCALE	1:1					
DECIMALS .X ± .05 .XX ± .01 .XXX ± .005	TOLERANCES	FRACTIONS ± 1/64 ANGLES ± 0° 30'	CODE					
				TYPE & TEMPER	HEAT TREAT. SPEC.	DRAWN	CHECKED	FINAL APPROVAL
				NATURAL				
				FINISH & SPEC. NO.	ELEC. DES. APP.	MECH. DES. APP.	PX-831	A