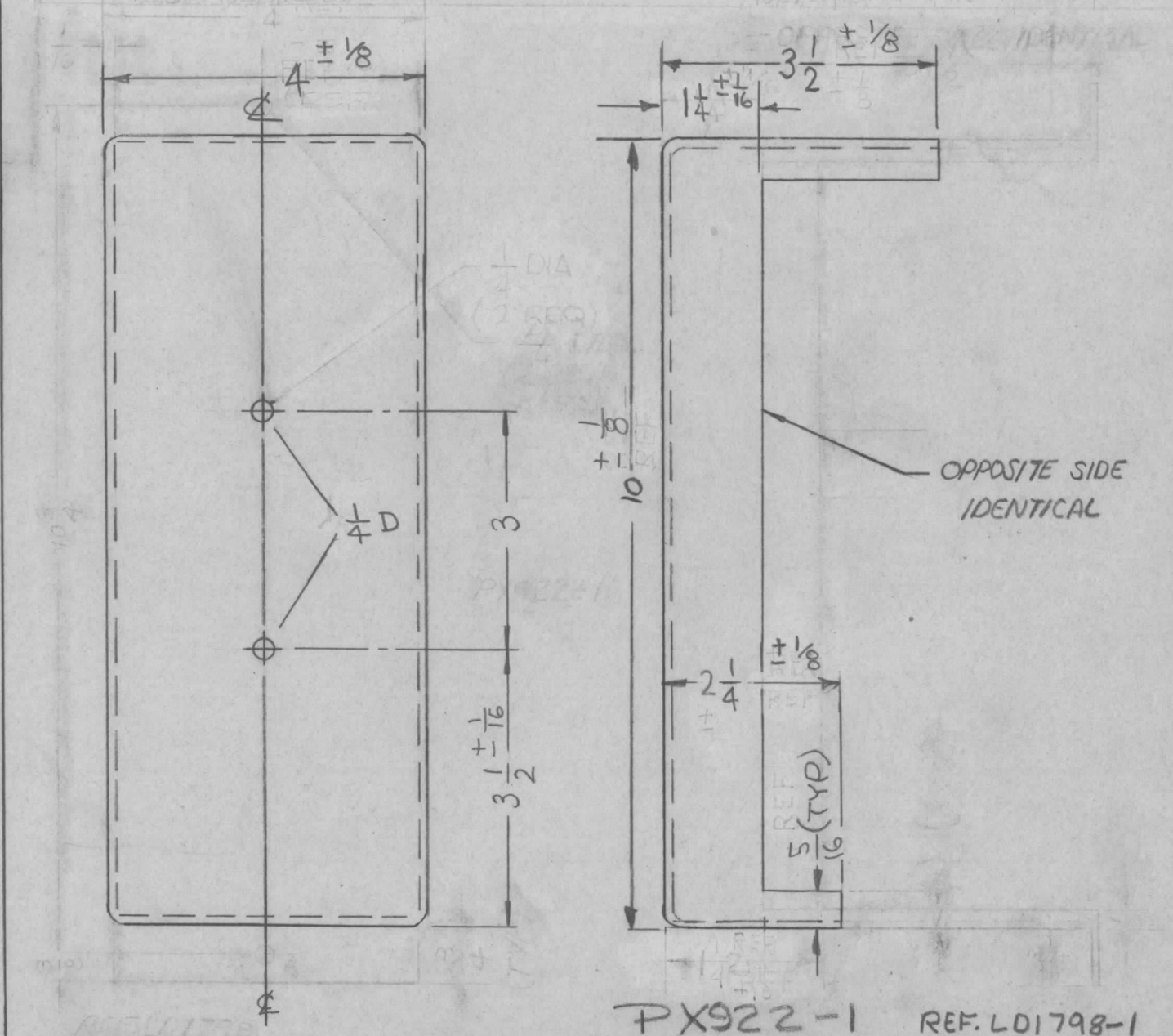
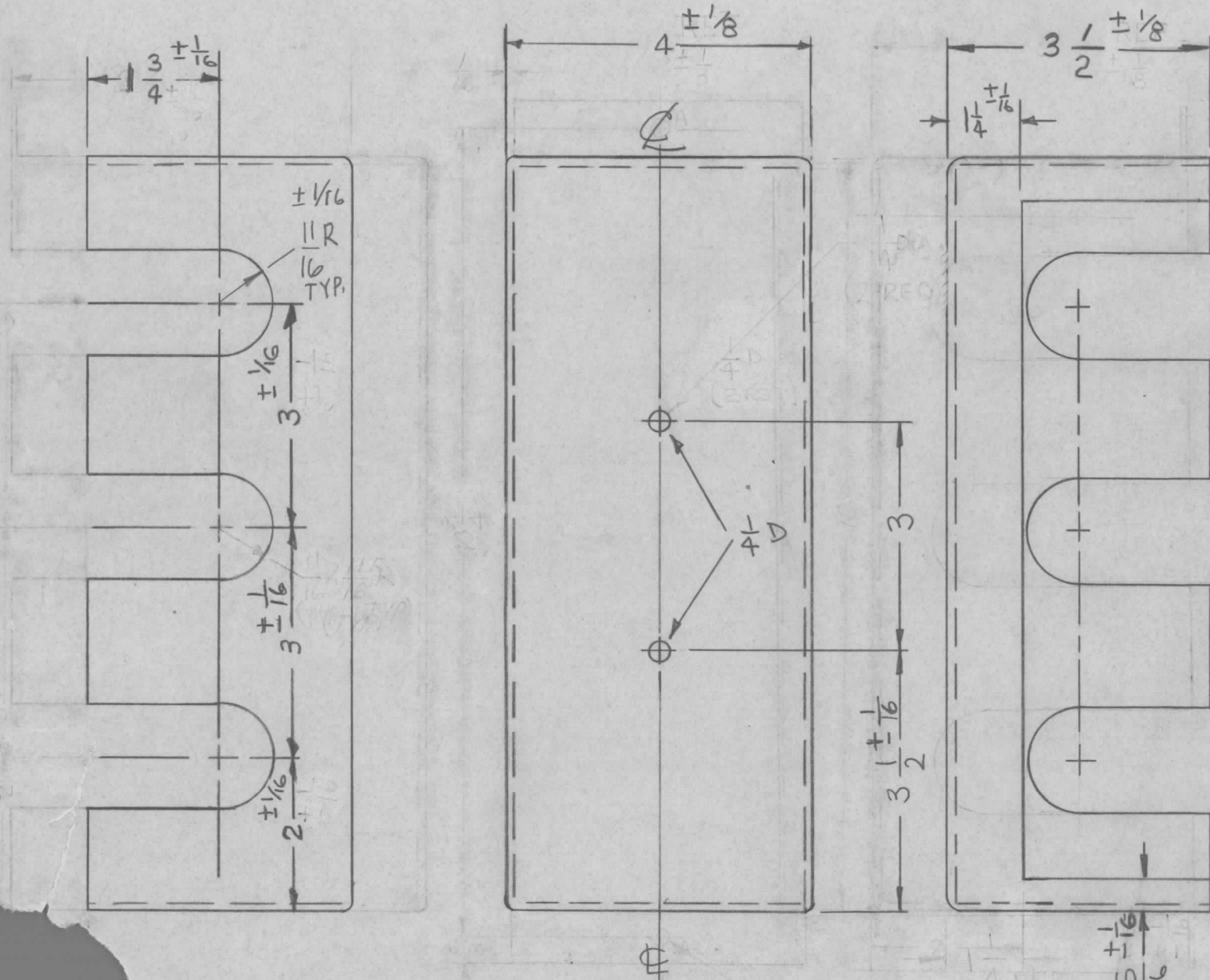


PX922

B

REVISIONS

SYM	DESCRIPTION	DATE	E.M.N. NO.	DRAFT	CHKD	APPD
X1	REDRAWN & REVISED	4/20/65		CJL	CA	
Ø	ORIGINAL RELEASE FOR PRODUCTION	4/20/65		CJL		
A	REDRAWN & REVISED (LIPS DELETED)	11/30/66	17301	WLD		
B	TOL'S ADDED TO DIMENSIONS	8/21/67	18474	HG		



NOTES
 PX922-2
 REF LD1798-2 (2 REQ)

2	GPT-200K	
Q'TY./UNIT	MODEL USED ON	ASS'Y. NO.
SCALE DO NOT SCALE	CODE A	

THE CONTENTS OF THIS DRAWING ARE THE EXCLUSIVE PROPERTY OF THE TECHNICAL MATERIEL CORP. ITS UNAUTHORIZED USE OR REPRODUCTION IN WHOLE OR IN PART IS STRICTLY FORBIDDEN.

REQ'D.	ITEM	PART NUMBER	DESCRIPTION	SYMBOL
F. BUDETTI LIST OF MATERIAL				
MATERIAL 3 LAYERS FIBERGLASS			THE TECHNICAL MATERIEL CORP. MAMARONECK, NEW YORK	
FINISH S115 SMOOTH GRAY ENAMEL			TITLE SHIELD, BREAKER	
UNLESS OTHERWISE SPECIFIED DIMENSIONS ARE IN INCHES AND INCLUDE CHEMICALLY APPLIED OR PLATED FINISHES				
DRAWN CJL		DATE 4/20/65	FINAL APPROVAL OB	
CHECKED JCB		DATE 4/20/65		
ELECT. DES.		DATE	PX922	
MECH. DES.		DATE	B	
DECIMALS .X ± .05 .XX ± .01 .XXX ± .005			FRACTIONS ± 1/64 ANGLES ± 0° 30'	
TOLERANCES			SHEET	
			REV. LTR.	

NOTES