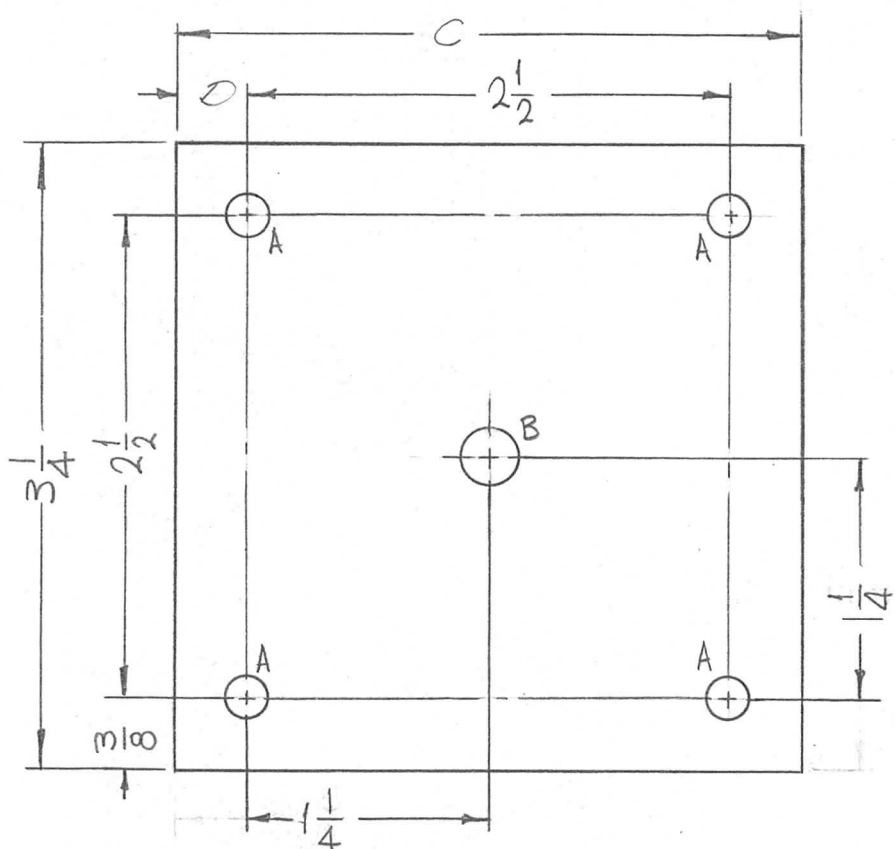


TMC PIN	C	D	REQ. PER UNIT	USED ON			PX 959	A
PX 959	3 1/4	3/8	1	MODEL	ASS'Y. NO.	DATE		
PX 959 -2	3	1/4		TST-10K		8-12-65		



HOLES	DESCRIPTION	REQ.
A	13/64 DIA.	4
B	9/32 DIA.	1

							REQ.	ITEM	PART NO.	F. BUDETTI	DESCRIPTION	SYMBOL	
									1/8 THICK	THE TECHNICAL MATERIEL CORP. MAMARONECK, NEW YORK			
A	ADD PIN CHT. TO INCL.-2	4-28-70	19824	GE	<i>[Signature]</i>				STOCK SIZE				
Ø	ORIGINAL RELEASE FOR PRODUCTION	3-3-66	AA	Jc	<i>[Signature]</i>				TEFLON	INSULATOR, RF FEEDTHRU			
SYM	DESCRIPTION	DATE	CH. NO.	DRAFTS	CHECKER	ENG. APP.	MATERIAL						
UNLESS OTHERWISE SPECIFIED DIMENSIONS ARE IN INCHES AND INCLUDE CHEMICALLY APPLIED OR PLATED FINISHES		SCALE		1:1				TFE	—	<i>[Signature]</i>	<i>[Signature]</i>	<i>[Signature]</i>	
								TYPE & TEMPER	HEAT TREAT. SPEC.	DRAWN	CHECKED	FINAL APPROVAL	
DECIMALS .X ± .05 .XX ± .01 .XXX ± .005	TOLERANCES	FRACTIONS ± 1/64 ANGLES ± 0° 30'	CODE A					FINISH & SPEC. NO.		ELEC. DES. APP.	MECH. DES. APP.	PX 959	A