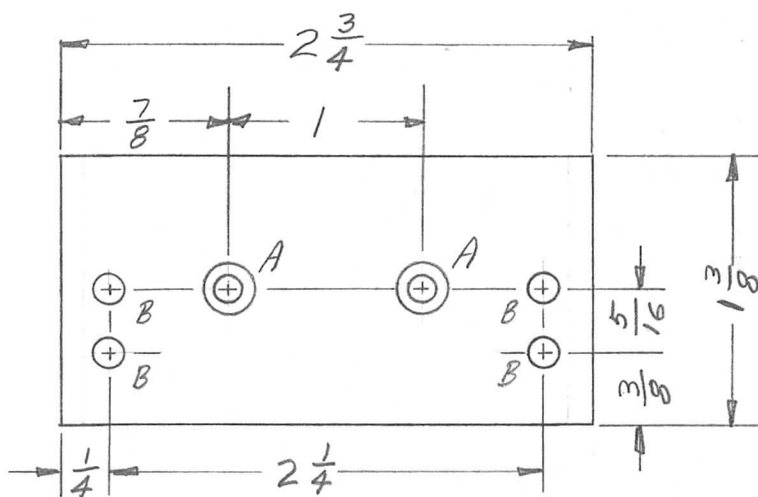


REQ. PER UNIT	USED ON			PX 968	Ø
	MODEL	ASS'Y. NO.	DATE		
1	KIT180		13 JAN 66		



FUNGUS PROOFING PER TMC SPEC. S113
 APPLIED AFTER LETTERING.

A ~ .120 DIA. CTSK 82° TO .230 DIA 2 REQ.

B ~ 9/64 DIA 4 REQ.

REF: LD2039

REQ.	ITEM	PART NO.	DESCRIPTION				SYMBOL	
		1/8	THE TECHNICAL MATERIEL CORP. MAMARONECK. NEW YORK					
			STOCK SIZE					
Ø	ORIGINAL RELEASE	2/2/66	PHENOLIC				INSULATOR, TERMINAL STRIP	
SYM	DESCRIPTION	DATE	CH. NO.	DRAFTS	CHECKER	ENG. APP.		
UNLESS OTHERWISE SPECIFIED DIMENSIONS ARE IN INCHES AND INCLUDE CHEMICALLY APPLIED OR PLATED FINISHES		SCALE						
DECIMALS .X ± .05 .XX ± .01 .XXX ± .005	TOLERANCES	FRACTIONS ± 1/64 ANGLES ± 0° 30'	CODE					
					XXXX	JEM	JDE 2/2/66	A. May
					NATURAL		RIP	PX 968
					FINISH & SPEC. NO.	ELEC. DES. APP.	MECH. DES. APP.	