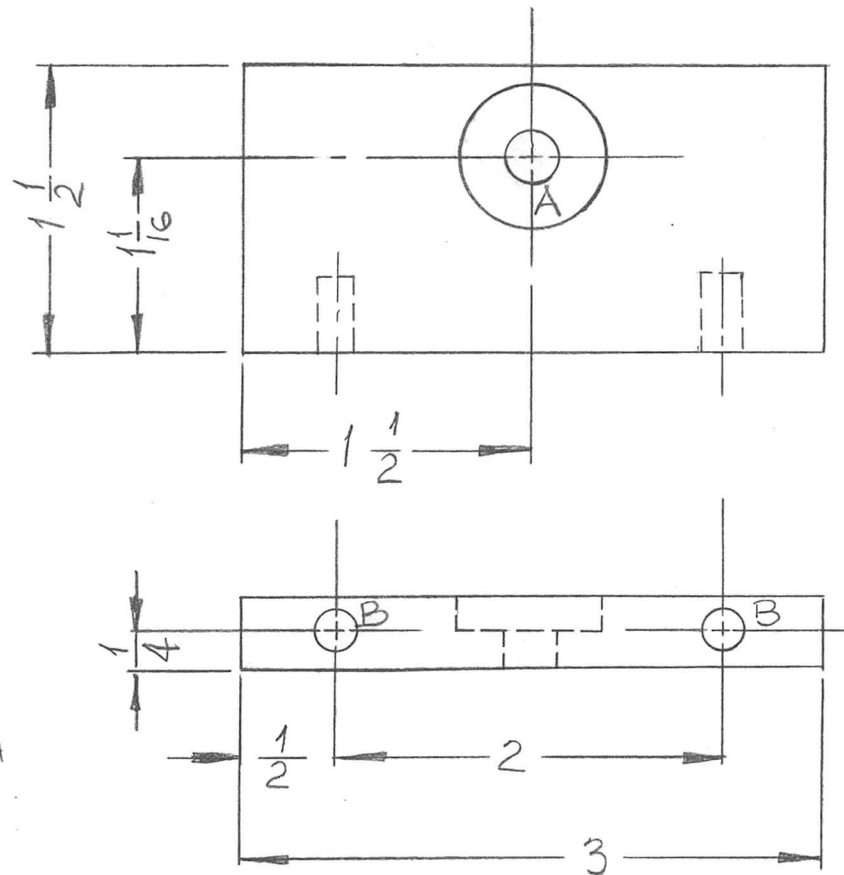


REQ. PER UNIT	USED ON		
	MODEL	ASS'Y. NO.	DATE
1	AP129	A5362	4-11-66

PX982 \emptyset

HOLE	DESCRIPTION	REQ.
A	DR. 9/32 DIA. C'BORE 3/4 DIA. X 1/4 DP.	1
B	SEE NOTE	2



NOTE (MTG. IT. 1 IN "B" HOLES)

- 1 DRILL 13/64 (.203) TO .552 MIN DEPTH
- 2 120 DEGREES C'SNK .22-.25 DIA.
- 3 TAP .410 MIN DEPTH USE HELI-COIL TAP #3FPB
- 4 INSTALL ITEM#1, 3/4 TO 1-1/2 PITCH BELOW SURFACE
- 5 BREAK OFF DRIVING TANG

REQ.	ITEM	PART NO.	BUDETTI DESCRIPTION	SYMBOL
2	1	NT139SF1-25	INSERT, SCREW THREAD	B
		1/2	THE TECHNICAL MATERIEL CORP. MAMARONECK, NEW YORK	
		EPOXY	BOARD CONTACT	
		G-11	u/w	o/s
		NATURAL	o/s	o/s
		FINISH & SPEC. NO.	ELEC. DES. APP.	MECH. DES. APP.
				PX982 \emptyset

SYM	DESCRIPTION	DATE	CH. NO.	DRAFTS	CHECKER	ENG. APP.
\emptyset	ORIGINAL RELEASE FOR PRODUCTION	2/23/67	\emptyset	CV		
X ₁	"A" WAS 9/32, 1 1/16 WAS 1	5-24-66	X ₁	u/w		
X	EXPER. RELEASE	4-13-66		u/w		
UNLESS OTHERWISE SPECIFIED DIMENSIONS ARE IN INCHES AND INCLUDE CHEMICALLY APPLIED OR PLATED FINISHES		SCALE 1:1				
DECIMALS .X ± .05 .XX ± .01 .XXX ± .005	TOLERANCES	FRACTIONS ± 1/64 ANGLES ± 0° 30'	CODE			