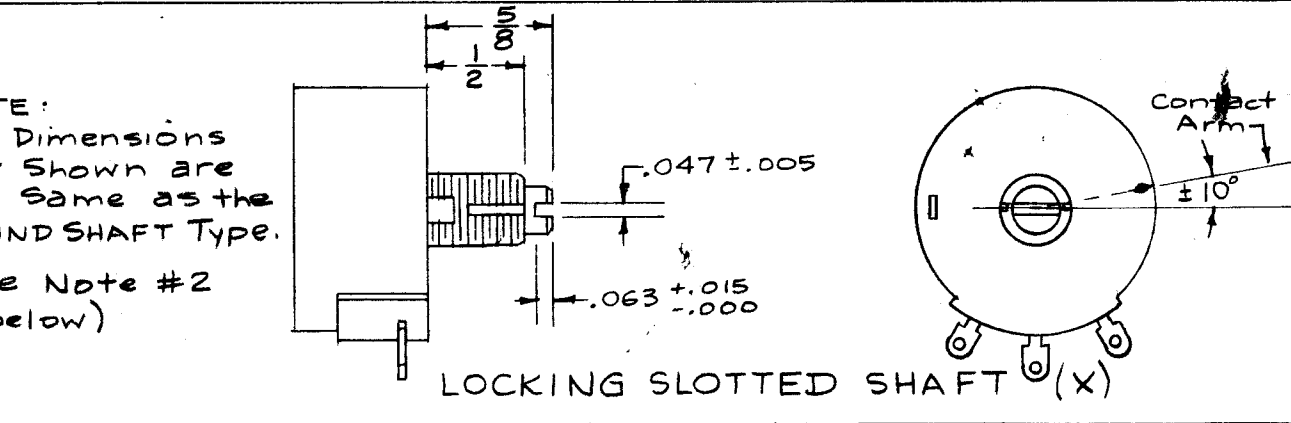
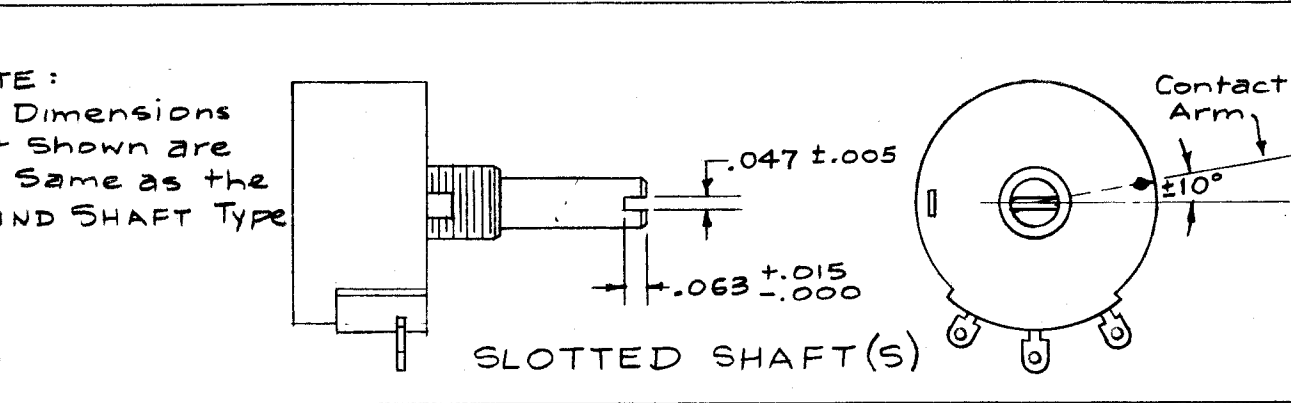
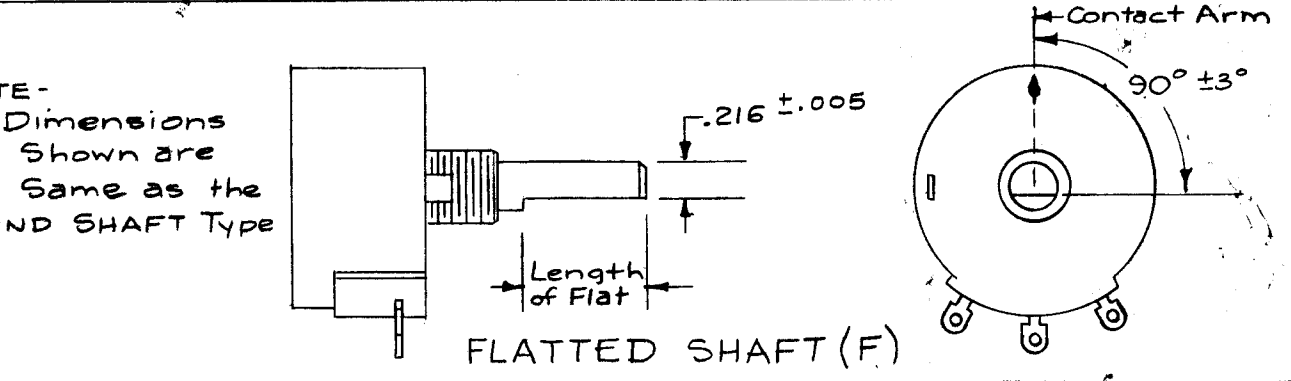
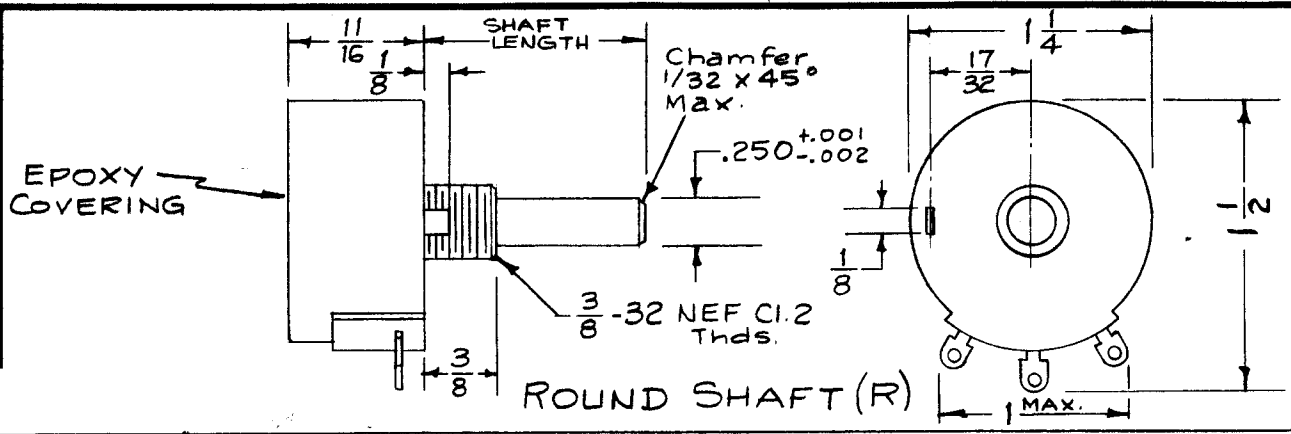


RV 105



SWITCH INFO.	
CODE	DESCRIPTION
A	No Switch
B	SPST Switch
C	DPST Switch

TEMPERATURE CHAR.		
CODE	MAX. AMB. TEMP.	% CH'GE
T	85°C 180°F	±10
U	85°C 180°F	±25

SHAFT STYLE	
CODE	TYPE
R	Round
F	Flatted
S	Slotted
X	Locking

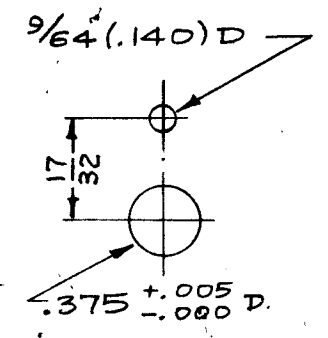
SHAFT LENGTHS			
CODE	Round or Flatted	Slotted	Length of Flat
A		5/8	
C		3/4	
D	7/8	7/8	3/8
E	1	1	1/2
G	1-1/4	1-1/4	5/8
H	1-1/2	1-1/2	5/8
J	2	2	5/8
K	2-1/2	2-1/2	2-1/8
L	4-1/2	4-1/2	4-1/8

CHARACTERISTIC		
CODE	TAPER	%TOL.
A	Linear	±10
B	Linear	±20
C	Log	±10
D	Log	±20
E	Reverse Log	±10
F	Reverse Log	±20

NOTE - All Dimensions Not Shown are the Same as the ROUND SHAFT Type

NOTE: All Dimensions Not Shown are the Same as the ROUND SHAFT Type

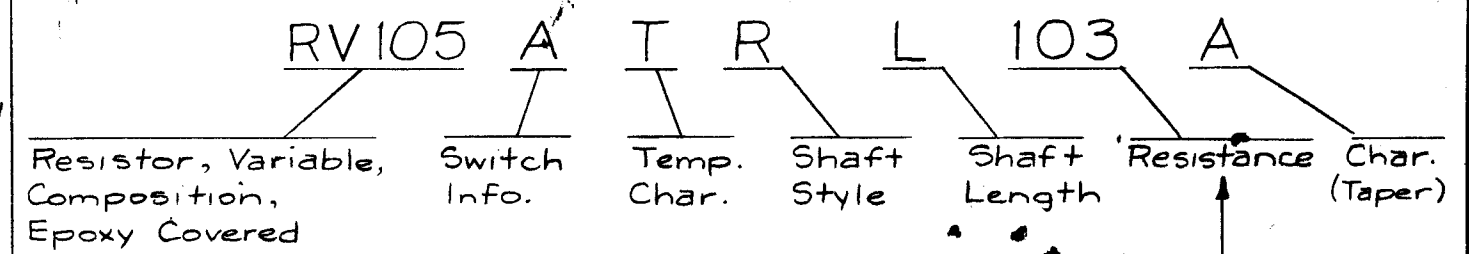
NOTE: All Dimensions Not Shown are the Same as the ROUND SHAFT Type. (See Note #2 Below)



DRILLING PLAN (For All Types)

STANDARD DRAWING

Type Designation to be in the following form:



Total Resistance in ohms is indicated by a three-digit number. The first two digits are the first two significant figures. The last digit specifies the number of zeros which follow the first two figures. Example: 103 = 10,000 ohms

NOTES:
 1. Mounting Hardware to be supplied by TMC. (Except "X" Type)
 One Hex Nut, N1H3732BN16
 One Lockwasher, LW137LSC
 2. Mfg. will supply One Hex Lock Nut, Nickel Plated, for the Locking Slotted Type. (X)

ISSUE	ITEM	CHANGED FROM	DATE	CH. NO.	DRAFTS	CHECKER	ENG. APP.
TOLERANCES							
SCALE:							
DEC. DIM. ±							
FRAC. DIM. ±							
ANGULAR DIM. ±							
MAXIMUM ALLOWABLE TOLERANCES HAVE BEEN DETERMINED AND ANY DEVIATIONS WILL BE CAUSE FOR REJECTION. REMOVE ALL BURRS AND SHARP EDGES							

REQ. PER UNIT	MODEL	PROJECT NO.	ASS'Y. NO.	DATE
USED ON				

REQ. ITEM	PART NO.	DESCRIPTION	SYMBOL
STOCK SIZE			
MATERIAL			
TYPE & TEMPER			
HEAT TREAT. SPEC.			
FINISH & SPEC. NO.			
DRAWN		CHECKED	
ELEC. DES. APP.		MECH. DES. APP.	

RV 105