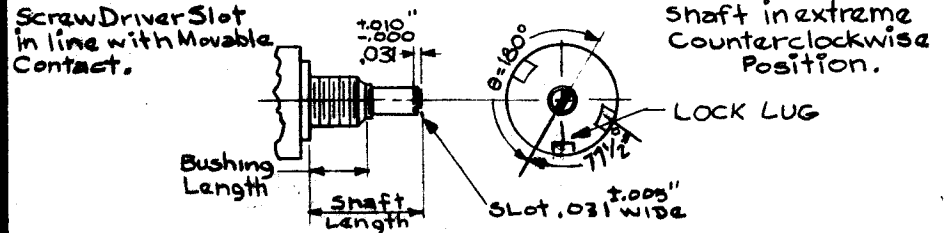
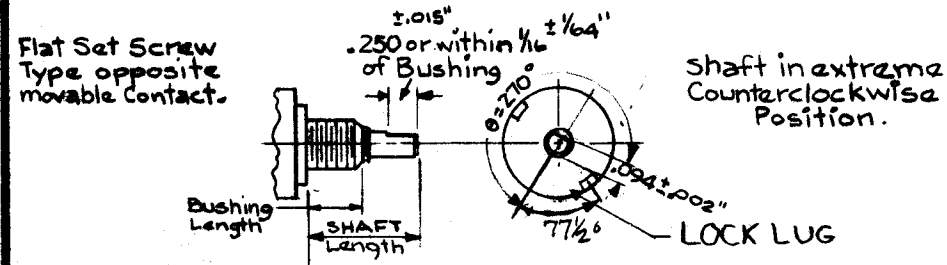


TYPE "R" SHAFT (ROUND)

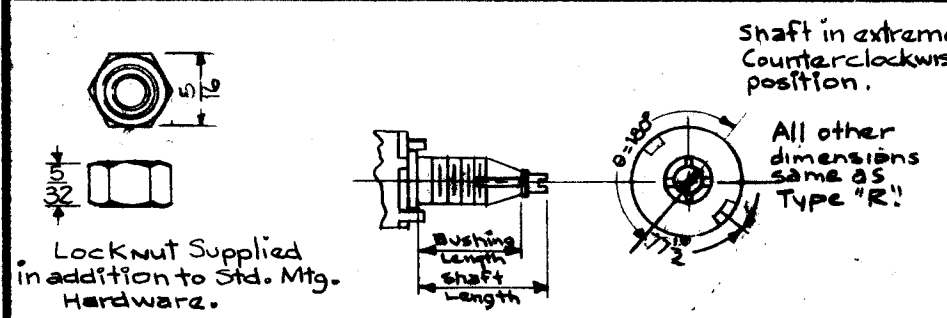
All other dimensions same as Type "R"



TYPE "S" SHAFT (SLOTTED)



TYPE "F" SHAFT (FLATTED)



TYPE "X" SHAFT (SLOTTED LOCKING)

ISSUE	ITEM	CHANGED FROM	DATE	CH. NO.	DRAFTS	CHECKER	ENG. APP.
B	1	S401 ADDED PKT CLARIFIED	5-11-65	13995	CJL	JCB	JCB
A	2	Chart #1 Taper Code U 10% deleted from Type	3-7-60	2902	RJL	JCB	JCB
A	1	Chart 5, Specs, MAX. CONT. Power Rating was 0.5WAT 70C					

SCALE: S401-224 (G) S401-106 S401-390 (B)

TOLERANCES: DEC. DIM. ±, FRAC. DIM. ±, ANGULAR DIM. ±

MAXIMUM ALLOWABLE TOLERANCES HAVE BEEN DETERMINED AND ANY DEVIATIONS WILL BE CAUSE FOR REJECTION. REMOVE ALL BURRS AND SHARP EDGES

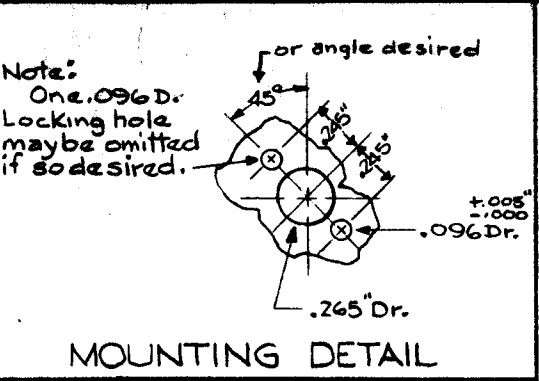
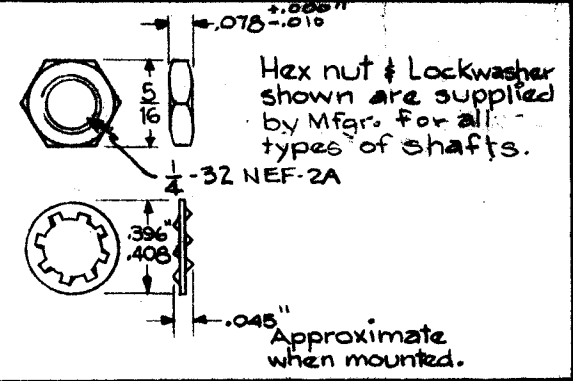


CHART #1 TAPERS AVAILABLE

Taper Code	TYPE
A	clockwise modified Log (standard from 500Ω to 2.5meg)
B	counterclockwise modified Log (standard from 500Ω to 2.5meg)
U	Linear (standard from 100Ω to 5meg)

CHART #2 STANDARD SHAFT LENGTHS AVAILABLE

Shaft Lengths are Available from Min 5/16 Lg. to Max 2 1/2" Lg. with 1/16 increments from 5/16 to 3/4 & 1/8 increments from 3/4 to 2 1/2.

NOTE -

- R - For type "R" Shaft (Round), Shaft Length must be "Bushing Length" + 1/8" Min.
- S - For type "S" Shaft (Slotted), Shaft Length must be "Bushing Length" + 1/8" Min.
- F - For type "F" Shaft (Flatted), Shaft Length must be "Bushing Length" + 5/16" Min.
- X - For type "X" Shaft (Locking), Shaft Length must be "Bushing Length" + 1/8" Min.

TMC PARTNUMBER WILL BE IN THE FOLLOWING FORM:

Example: 251 = 250 ohms ; 505 = 5 Megohms ; 503 = 50,000 ohms; etc.

RV106 U X 8 B 251 A

Basic TMC Part No	Taper Desired See chart #1	Shaft Type Desired See pictorials	Shaft Length Desired in 16ths of an inch See chart #2	Bushing Lengths Desired See chart #3	Resistance Value Desired (in ohms) Last digit indicates # of Zeros See Chart #4	Res. Tol. Desired See chart #5
-------------------	-------------------------------	--------------------------------------	--	---	---	-----------------------------------

REQ. PER UNIT	MODEL	PROJECT NO.	ASS'Y. NO.	DATE

USED ON

CHART #3 STANDARD BUSHING LENGTHS AVAILABLE

For SHAFT TYPE	BUSHING CODE			
	A 1/4 Lg.	B 3/8 Lg.	C 1/2 Lg.	D 5/8 Lg.
R (Round)	X ②	X ④	X ⑥	—
S (Slotted)	X ②	X ④	X ⑥	—
F (Flatted)	X ②	X ④	X ⑥	—
"X" (Locked)	—	X ①	X ③	X ⑤

① For MAX. 1/16 thk. Panel Mtg.
② For MAX. 1/8 thk. Panel Mtg.
③ For MAX. 3/16 thk. Panel Mtg.
④ For MAX. 1/4 thk. Panel Mtg.
⑤ For MAX. 5/16 thk. Panel Mtg.
⑥ For MAX. 3/8 thk. Panel Mtg.

CHART #4 STANDARD RESISTANCES AVAILABLE (In ohms)

100	1,000	10,000	0.1 Meg	1.0 Meg
250	2,500	25,000	0.25 Meg	2.5 Meg
500	5,000	50,000	0.5 Meg	5.0 Meg

NOTE - Special Values between 100 & 5.0 Meg are available on request.

CHART #5 RESISTANCE TOLERANCE AVAILABLE

Tol. Code	Tol.	STANDARD
A	± 10%	Up to & Including .5 Megohms
B	± 20%	For all Resistances

SPECS.

Max. Cont. Power Rating { 0.5 W at 70° for Linear (U) Taper
0.25 W at 70° for A & B Taper

Max. Cont. Volt Rating (Across Element or to Gnd) - 350 VRMS

Rated Ambient Temp. = 70°C

Oper. Temp. Range -55° to +120°C

Performance - In Acc/with MIL-R-94B/3B

REQ. ITEM	PART NO.	DESCRIPTION	SYMBOL
		THE TECHNICAL MATERIEL CORP. MAMARONECK, NEW YORK	
		RESISTOR, VARIABLE, COMPOSITION	
		1/2 WATT (MINIATURE)	
		TYPE & TEMPER HEAT TREAT. SPEC.	DRAWN CHECKED FINAL APPROVAL
		FINISH & SPEC. NO.	ELEC. DES. APP. MECH. DES. APP. RV 106 B