

DATE 2/20/58  
SH. 1 OF 3  
COMPILED BY  
A.R.B.

TMC SPECIFICATION NO. S-360

TITLE: PURCHASING SPECIFICATION FX-154

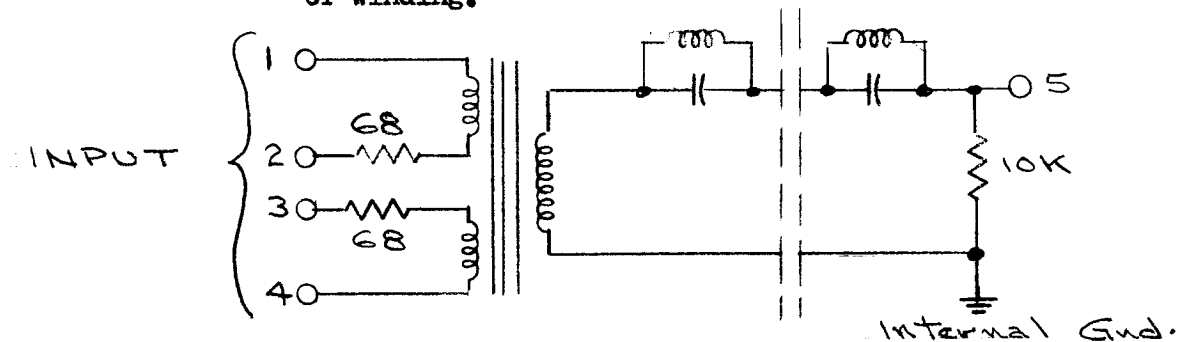
JOB

APPROVED

1. ELECTRICAL:

1.1 CHARACTERISTICS:

- 1.1.1 Pass Band - Output must be flat within 3 db in the region of 13.70 Kc/s to 16.65 Kc/s.
- 1.1.2 Band Rejection - Output must be down at least 60 db at 17.5 Kc/s and above at least 50 db at 12.40 and below.
- 1.1.3 Insertion Loss - Less than 4 db at point of minimum loss within the bandpass.
- 1.1.4 Temperature Range - The filter shall be constructed so that within the temperature range of 0° C. to 60° C. The specification 1.1.1, 1.1.2 and 1.1.3 shall be met.
- 1.1.5 Drift - The long term drift shall be such that specification 1.1.1, 1.1.2 and 1.1.3 shall be met after a period of two years after delivery.
- 1.1.6 Input Impedance nominal 1000  $\Omega$   $\pm$  15%, Balanced with split winding, 68  $\Omega$   $\frac{1}{2}$  W. 10% resistors inserted in each leg of CT winding.



- 1.1.7 Output Impedance - 10,000  $\Omega$  unbalanced, terminating resistor in can.  $\frac{1}{2}$  W. 10%.

DATE 2/20/58  
 SH. 2 OF 3  
 COMPILED BY  
 A.R.B.

TMC SPECIFICATION NO. S-360-A

TITLE: PURCHASING SPECIFICATION FX-154

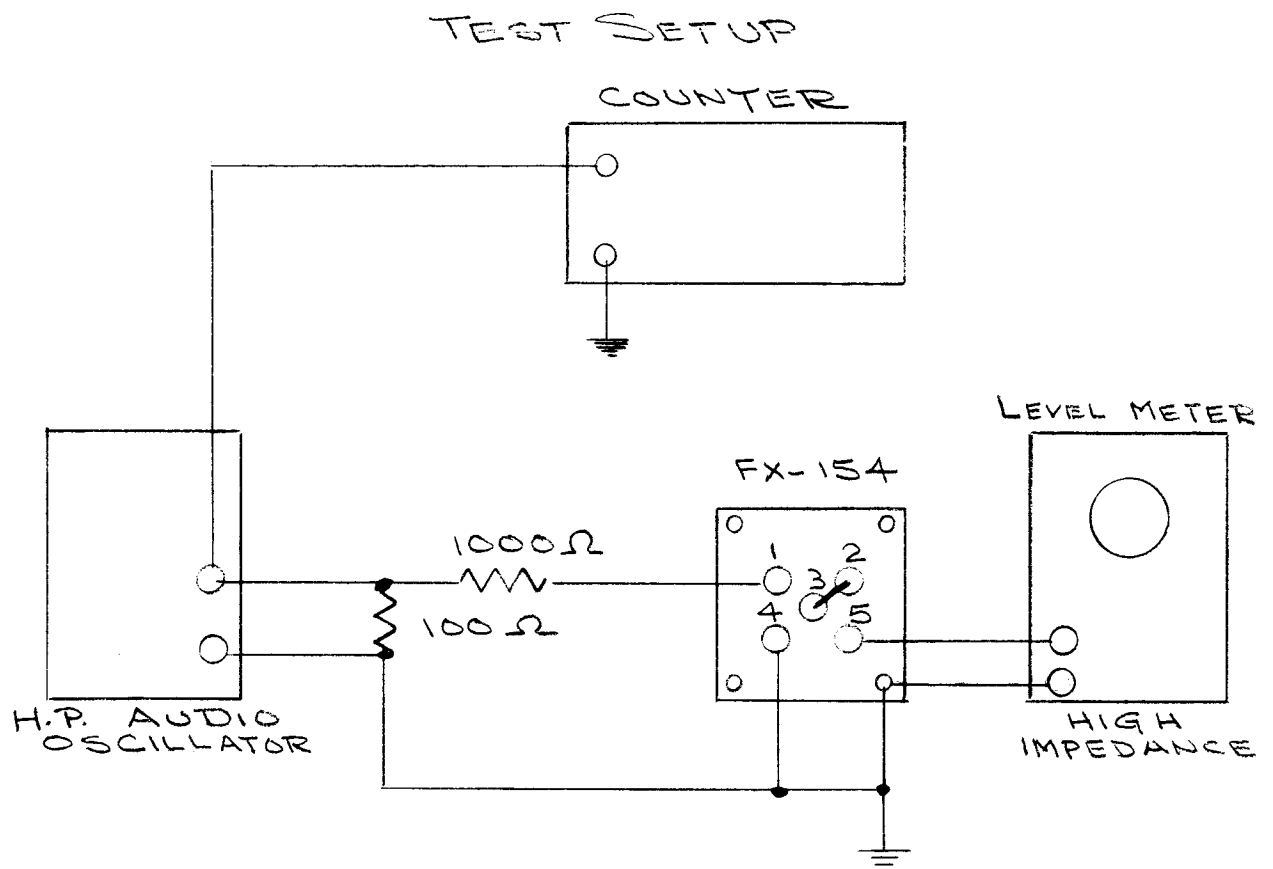
JOB

APPROVED *AMB*

2. PHYSICAL:

2.1 Can Dimensions, mounting system, terminal placement and markings as shown on accompanying drawing.

2.2 Unit shall be painted TMC gray according to TMC specification S-115 employing a paint which requires baking below 240° F.



FREQ.	db
13.7	≥ -3
16.65	≥ -3
17.5	≤ -60
12.4	≤ -50

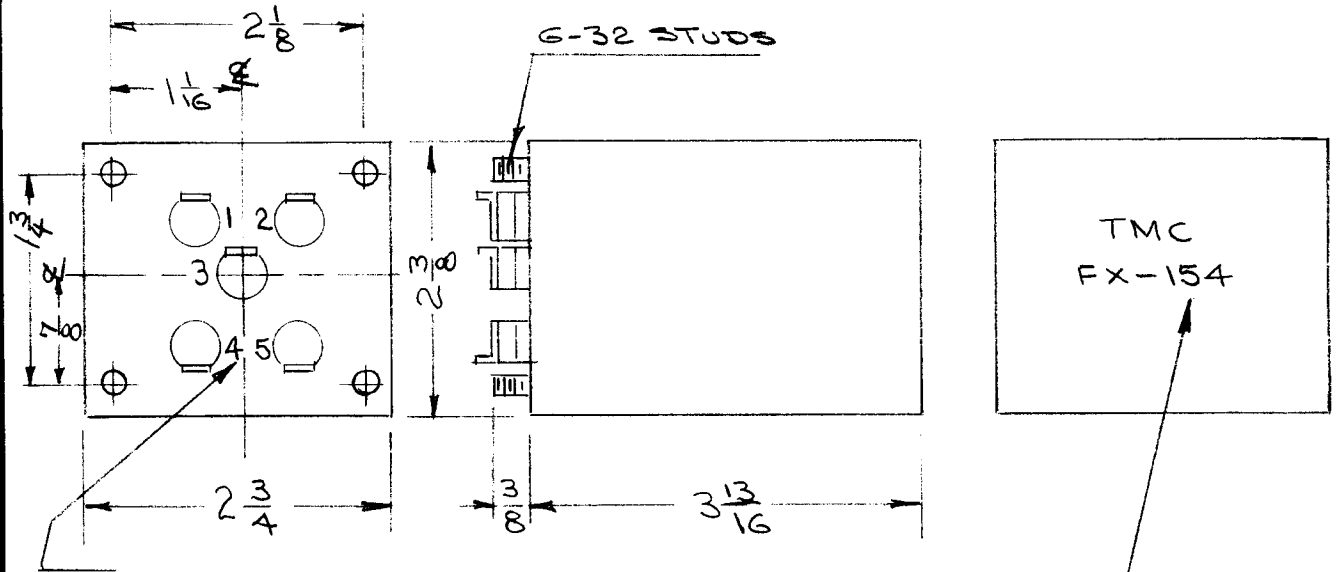
DATE 2/25/58  
 SH. 3 OF 3  
 COMPILED BY  
A. R. B.

TMC SPECIFICATION NO. S-360

TITLE: PURCHASING SPECIFICATION FX-154

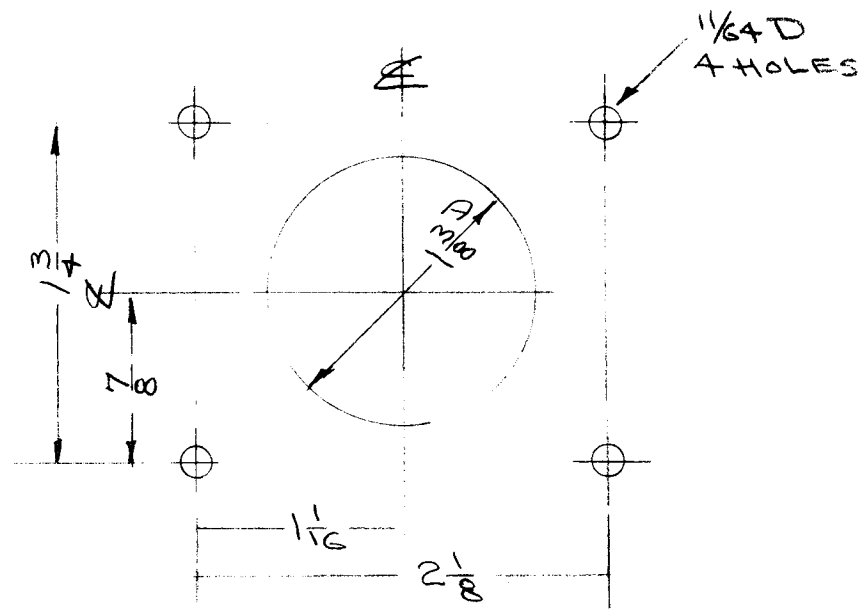
JOB

APPROVED



TMC  
 FX-154

STAMPING NOTE:  
 STAMP AS SHOWN  $\frac{1}{8}$  HIGH  
 BLACK GOTHIC.



DRILLING PLAN

