

DATE 11-12-61
SHEET 1 OF 2

TMC SPECIFICATION NO. S 617

C

aa
COMPILED CHECKED

TITLE: TEST PROCEDURE FOR THE MODEL TER-250/300U

DB
APPROVED

TEST EQUIPMENT REQUIRED

Signal Generator - General Radio 1001-A

RF Bridge - General Radio 916-A

RADIO RECEIVER

VOM-SIMPSON MODEL 260

1.0 Mechanical Inspection

1.1 Inspect resistor for any sign of damage in installation.

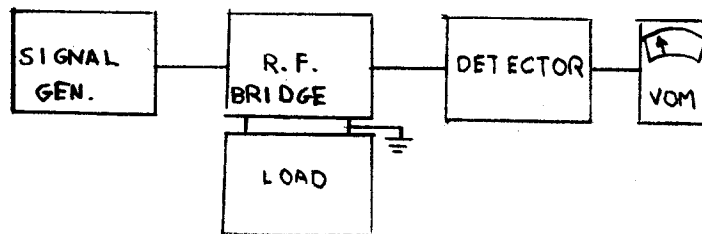
1.2 Check all mechanical connections to see that they are secure.

1.3 Check the unit all over for any missing hardware.

2.0 Electrical Inspection

2.1 Measure DC resistance from bowl terminal to ground terminal to read $300\text{ohm} \pm 10\%$.

2.2 Set up equipment as illustrated in the Block Diagram.



2.3 TAKE Readings at the following frequencies and see that the VSWR is 1.3 or less as computed on Smith chart.

DATE 11-12-61
SHEET 2 OF 2

TMC SPECIFICATION NO. S 617

C

aa
COMPILED

CHECKED

TITLE: **TEST PROCEDURE FOR THE MODEL TER-250/300U**

OB
APPROVED

TYPICAL VALUES

FMC	R	X
2	320	-20.0
4	305	-11.2
8	300	- 3.7
16	285	+18.0
30	310	+50.0

If the VSWR exceeds 1.3 for any frequency, small adjustments can be made in the coil spacing to bring it within tolerance.

TEST DATE SHEET TER-250/300U

1.0 Mechanical Inspection _____

2.0 Electrical Inspection _____

FMC	R	X	VSWR
2	_____	_____	_____
4	_____	_____	_____
8	_____	_____	_____
16	_____	_____	_____
30	_____	_____	_____

DATE _____

TESTED BY _____

