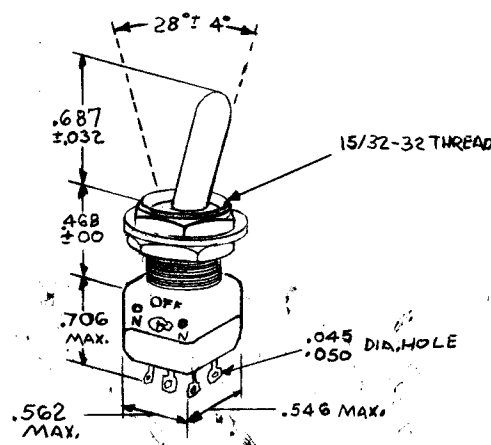
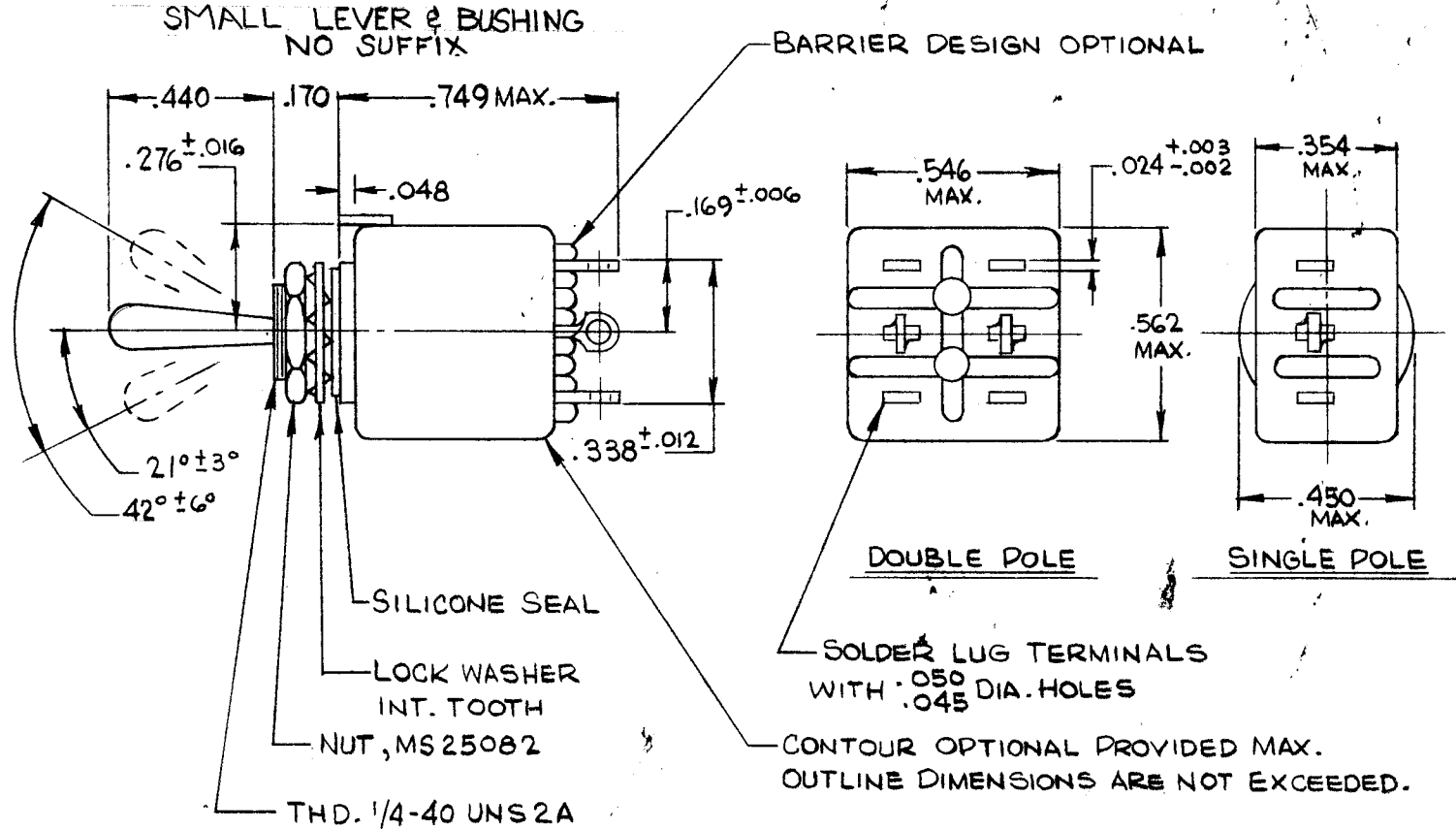


TMC PART NO.	MFG. PART NO.	CONTACTS	A B C		
			KEYWAY ON "C" SIDE OF SWITCH. CIRCUIT IS MADE ON SIDE OPPOSITE THROW OF LEVER.		
ST107P	8867K1	DPDT	ON	OFF	ON
ST107E	8866K1	SPDT	ON	OFF	ON
ST107S	8867K2	DPDT	MON. ON	OFF	MON. ON



LARGE LEVER & BUSHING TYPE "X" SUFFIX



SYM	DESCRIPTION	REVISIONS				
		DATE	E.M.N. NO.	DRAFT	CHKD	APPD
Ø	ORIGINAL RELEASE FOR PRODUCTION	4/2/65		HCA		
A	ST107S ADDED, PICT. ADDED, NOTE ② ADDED	5-12-65	13980	QJL	JL	

ST 107S

**SPECIFICATIONS**

TEMPERATURE : 140 °C MAX.  
CONTACT RATING : 4 A @ 28 VDC RESISTIVE  
1 A @ 28 VDC INDUCTIVE  
3 A @ 115 VAC RESISTIVE  
1 A @ 115 VAC INDUCTIVE

INSULATION RESISTANCE : 1000 MΩ MIN.  
VIBRATION : 5-28 CPS @ 0.5 INCH P-P  
28-200 CPS @ 20g

SHOCK : MEETS METHOD 207 OF MIL-STD-202  
LIFE : 20,000 CYCLES MIN.  
TERMINAL FINISH : GOLD PLATE  
0.040 MIL. MIN.

INITIAL CONTACT RESISTANCE : 0.01 Ω MAX.  
DIELECTRIC STRENGTH : 1000 VRMS  
MINIMUM CURRENT CAPACITY (5mVAC-DC) : 25ma  
TMC P/N SHALL BE IN THE FOLLOWING FORM:

ST107 P X  
BASIC P/N    CIRCUIT PER CHART    LEVER & BUSHING    ADD SUFFIX WHEN REQUIRED

REF : MIL-STD-242 E (II 1402.15 & II 1402.16)  
SEE ALSO : M575028 & M575029

**NOTE :**

- NON-FUNCTIONAL TERMINALS NEED NOT BE SUPPLIED. ALL HARDWARE AS SHOWN SUPPLIED BY MANUFACTURER.
- FOR BUSHING STYLE "X" CHANGE MFG P/N FROM 8867K TO 8869K OR 8866K TO 8868K

STANDARD DRAWING

1	TTRR, TTRT	
Q'TY./UNIT	MODEL USED ON	ASS'Y. NO.
SCALE	CODE	S401-18
THE CONTENTS OF THIS DRAWING ARE THE EXCLUSIVE PROPERTY OF THE TECHNICAL MATERIEL CORP. ITS UNAUTHORIZED USE OR REPRODUCTION IN WHOLE OR IN PART IS STRICTLY FORBIDDEN.		

REQ'D.	ITEM	PART NUMBER	DESCRIPTION	SYMBOL
<b>LIST OF MATERIAL</b>				
MATERIAL		THE TECHNICAL MATERIEL CORP. MAMARONECK, NEW YORK		
FINISH		TITLE SWITCH, TOGGLE MINIATURE		
UNLESS OTHERWISE SPECIFIED DIMENSIONS ARE IN INCHES AND INCLUDE CHEMICALLY APPLIED OR PLATED FINISHES		DRAWN H.AUSTIN	DATE 4-1-65	FINAL APPROVAL DATE 4/5/65
DECIMALS .X ± .05 .XX ± .01 .XXX ± .005		CHECKED [Signature]	DATE 4/2/65	
FRACTIONS ± 1/64 ANGLES ± 0° 30'		ELECT. DES. [Signature]	DATE 4/2/65	
TOLERANCES		MECH. DES. [Signature]	DATE 4/2/65	
ST 107				A
SHEET				REV. LTR.

NOTES