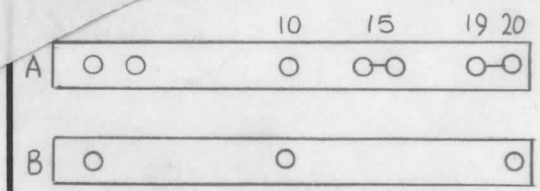
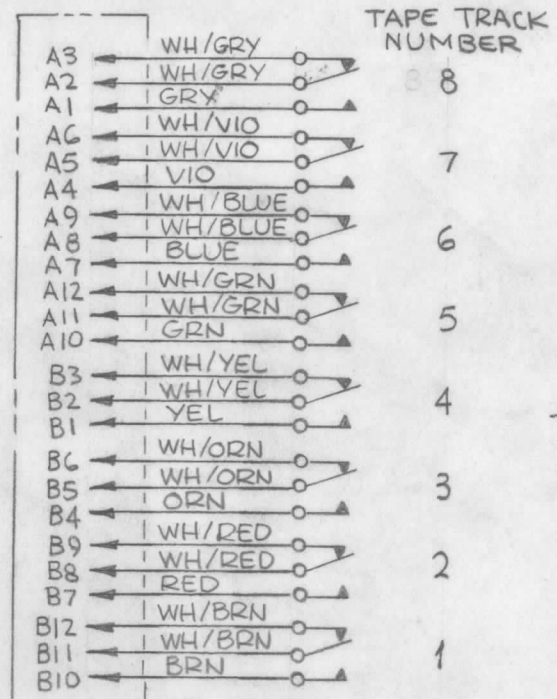


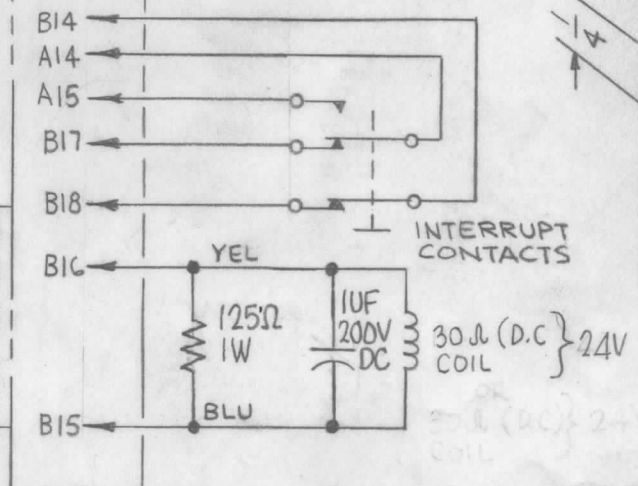
STANDARD DRAWING



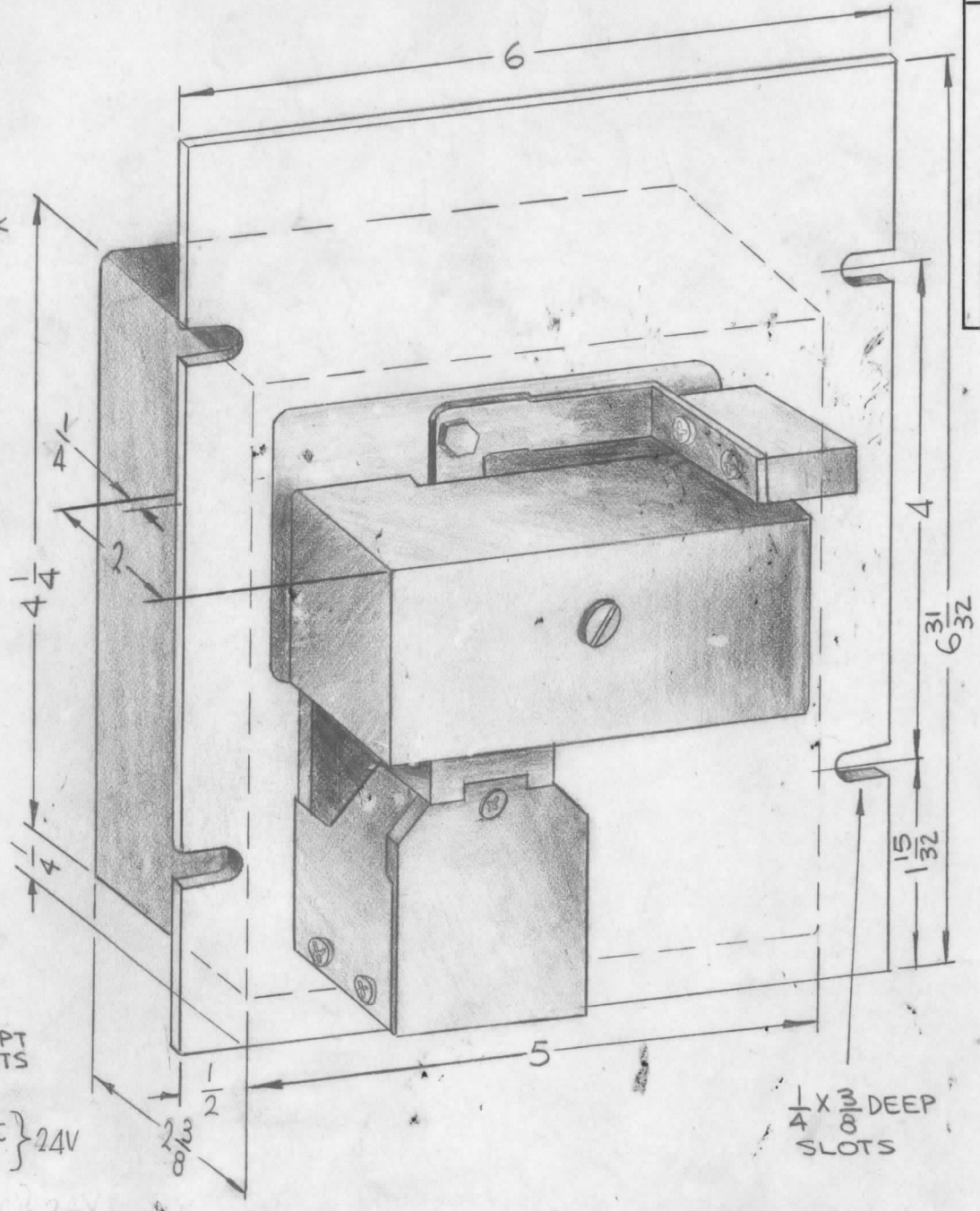
AMP TERMINAL BLOCK
480065 (TOP VIEW)



TAPE TRACK NUMBER



INTERRUPT CONTACTS



TD100

REVISIONS						
SYM	DESCRIPTION	DATE	E.M.N. NO.	DRAFT	CHKD	APPD
Ø	ORIGINAL RELEASE FOR PRODUCTION	1/6/66	Ø	HLA		file

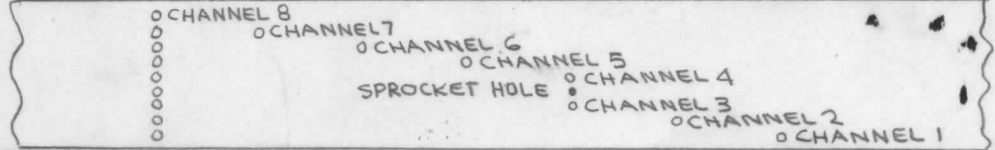
SPECIFICATIONS - Electrical Operation
Drive Pulse. A drive pulse of 24 volts \pm 10%, 25 ms in length (24 ms absolute minimum) and 15 ms between the trailing edge of one pulse and the leading edge of the succeeding pulse, is necessary to operate the stepping mechanism. During synchronous operation, a constant 24 volts DC is applied to the coil through the mechanism interrupter contacts which create the necessary pulses. The coil is rated at 800 milliamperes at 24 VDC.

Contacts. Form "C" switching is standard. The maximum current capacity of the contacts is 2 amperes pulse gated and 5 milliamperes live switching, at 50 VDC, resistive load. Contact resistance at connector terminals is 0.2 ohms. To minimize the effects of atmospheric contamination, it is recommended that a minimum current of 50 milliamperes be used in a gated switching operation.

Electrical Termination. All wiring is terminated in two 20 pin AMP taper pin connectors, mounted on the rear of the panel.

FUNCTION The Tally Model 625 is a unidirectional, low speed tape reader. The reader will operate in an asynchronous mode at any speed up to 25 cycles per second. Repetition rate during the synchronous mode of operation is approximately 55 to 60 cycles per second. It will read 11/16 inch, 7/8 inch, or 1 inch tape of 5,6,7 or 8 data levels without alteration.

Tape Requirements. The Model 625 will read any perforated data tape which has been prepared within the specifications of EIA std RS227.



ASYNCHRONOUS
24 V.D.C. PULSE 25MS DURATION

SYNCHRONOUS
24 V.D.C. TO B16 WITH B15 JUMPED TO B18 FOR COIL RETURN THROUGH INTERPRETER CONTACTS.

TYPICAL WIRE COLOR CODING
 GRY = GRAY (SOLID)
 GRY = GRAY TRACER ON WHITE
 YOB = YELLOW ON BLACK

NOTES

RTDA - 1		
Q'TY./UNIT	MODEL USED ON	ASS'Y. NO.
SCALE	CODE C	S401-419 (Model 625)

THE CONTENTS OF THIS DRAWING ARE THE EXCLUSIVE PROPERTY OF THE TECHNICAL MATERIEL CORP. ITS UNAUTHORIZED USE OR REPRODUCTION IN WHOLE OR IN PART IS STRICTLY FORBIDDEN.

REQ'D.	ITEM	PART NUMBER	DESCRIPTION	SYMBOL
EATON LIST OF MATERIAL				
MATERIAL		STAINLESS STEEL 303 OR EQUIV.		
FINISH		PASSIVATE		
		TITLE TAPE READER		
UNLESS OTHERWISE SPECIFIED DIMENSIONS ARE IN INCHES AND INCLUDE CHEMICALLY APPLIED OR PLATED FINISHES		DRAWN	DATE 10-5-65	FINAL APPROVAL
		CHECKED	DATE 10-20-65	DATE 1/6/66
DECIMALS .X \pm .05 .XX \pm .01 .XXX \pm .005		ELECT. DES.	DATE 1/5/66	SHEET
FRACTIONS \pm 1/64 ANGLES \pm 0° 30'		MECH. DES.	DATE	
TOLERANCES		REV. LTR.		