

IF IT IS FOUND DESIRABLE TO CHANGE ANY TOLERANCE OR OTHER DETAIL SPECIFIED ON THIS DRAWING NOTIFY THE PURCHASER PROMPTLY.

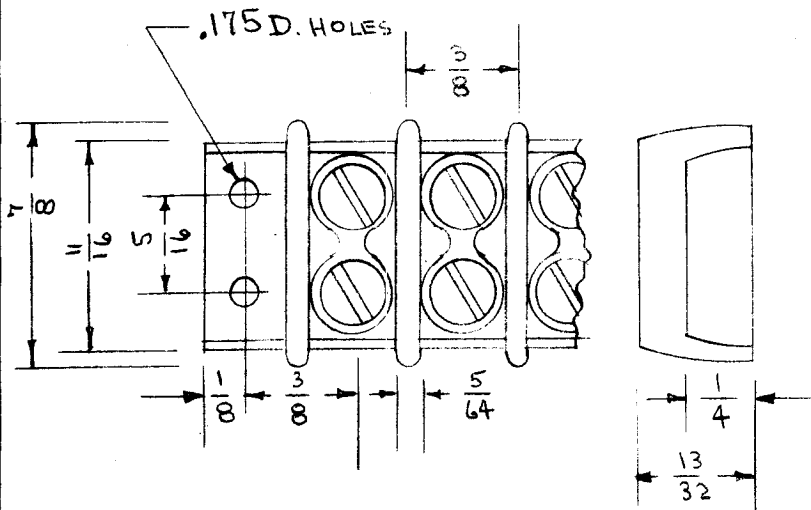
STANDARD DRAWING

TM-102

MAXIMUM ALLOWABLE TOLERANCES HAVE BEEN DETERMINED AND DEVIATIONS WILL BE CAUSE FOR REJECTION. REMOVE ALL BURRS AND SHARP EDGES

USED ON

MODEL	PROJECT NO.	ASS'Y. NO.	DATE
-------	-------------	------------	------



TMC No.	JONES CATALOG No.	KULKA CATALOG No.	NUMBER TERMINALS
TM-102-1	1-164-	600-A-1	1
TM-102-2	2-164-	600-A-2	2
TM-102-3	3-164-	600-A-3	3
TM-102-4	4-164-	600-A-4	4
TM-102-5	5-164-	600-A-5	5
TM-102-6	6-164-	600-A-6	6
TM-102-7	7-164-	600-A-7	7
TM-102-8	8-164-	600-A-8	8
TM-102-9	9-164-	600-A-9	9
TM-102-10	10-164-	600-A-10	10
TM-102-11	11-164-	600-A-11	11
TM-102-12	12-164-	600-A-12	12
TM-102-13	13-164-	600-A-13	13
TM-102-14	14-164-	600-A-14	14
TM-102-15	15-164-	600-A-15	15
TM-102-16	16-164-	600-A-16	16
TM-102-17	17-164-	600-A-17	17
TM-102-18	18-164-	600-A-18	18
TM-102-19	19-164-	600-A-19	19
TM-102-20	20-164-	600-A-20	20
TM-102-21	21-164-	600-A-21	21

SPECIFICATION:

- 1-Phenolic Material shall be plain black bakelite.
- 2-Screws: Binder head, bright nickel plate, 6-32 thread by 1/4 inch long.
- 3-Metal Spacer; Bright nickel plate.

If the strip is cut to obtain the required length, then, the finished surface shall be smooth and free of chips or round edges. The cut surface shall be coated with a clear fungicidal material.

Dimensions for ref. only.

Ref. Cinch-Jones

Kulka Electric Mfg. Co., Inc.

REQ.	ITEM	PART NO.	DESCRIPTION	SYMBOL
//			THE TECHNICAL MATERIEL CORP.	
STOCK SIZE			MAMARONECK, NEW YORK	
//			TERMINAL STRIP	
MATERIAL			BARRIER TYPE	
//			C.D.D. 10-1-5Y	
WEIGHT PER PC.			G.T.O	
TYPE & TEMPER			DRAWN	
//			ELEC. DES. APP.	
HEAT TREAT. SPEC.			MECH. DES. APP.	
//			CHECKED	
FINISH & SPEC. NO.			FINAL APPROVAL	
			TM-102	

B	1	"D" Deleted from cat.	3-22-57	2	SC	Handwritten initials	Handwritten initials
A	1	Material mica Deleted	2/15/55	1	Handwritten initials	Handwritten initials	Handwritten initials
ISSUE	ITEM	CHANGED FROM	DATE	CN. NO.	DRAFTS	CHECKER	ENG. APP.

TOLERANCES		SCALE	//
ALL OTHERS	DEC. DIM. ± FRAC. DIM. ± ANGULAR DIM. ±	DRILL, PUNCH, COMMERCIAL STOCK SIZES AND MANUFACTURERS TOLERANCES ARE NOT INCLUDED.	

IF IT IS FOUND DESIRABLE TO CHANGE ANY TOLERANCE OR OTHER DETAIL SPECIFIED ON THIS DRAWING NOTIFY THE PURCHASER PROMPTLY.

STANDARD DRAWING

TM-103

A

MAXIMUM ALLOWABLE TOLERANCES HAVE BEEN DETERMINED AND DEVIATIONS WILL BE CAUSE FOR REJECTION. REMOVE ALL BURRS AND SHARP EDGES

USED ON

MODEL

PROJECT NO.

ASS'Y. NO.

DATE

TMC#	ADC #	DESCRIPTION
TM-103-1	PJ-31	Double row jack panel with designation strip, but less jacks. 19"W, 2-1/8"H, 3/4"D.
TM-103-2	PJ-33	Single row jack panel with designation strip, but less jacks. 19"W, 1-3/4"H, 3/4"D.
TM-103-3	PJ-341	Same as TM-103-1, but with 18 jacks, TMC #JJ-024 (ADC Type PJ-318). 19"W, 2-1/8"H, 3-5/8"D. \diamond
TM-103-4	PJ-343	Same as TM-103-2, but with 24 jacks, TMC #JJ-024 (ADC Type PJ-318). 19"W, 1-3/4"H, 3-5/8"D. \diamond

Ref: Audio Development Co.

REQ.	ITEM	PART NO.	DESCRIPTION	SYMBOL
			THE TECHNICAL MATERIEL CORP. MAMARONECK, NEW YORK	
STOCK SIZE			PANEL, JACK	
MATERIAL		WEIGHT PER PC.		
TYPE & TEMPER			AD 11/13/52	0018
			DRAWN	ELEC. DES. APP. MECH. DES. APP.
			C.D.D. 10-27-52	
HEAT TREAT. SPEC.			CHECKED	FINAL APPROVAL
FINISH & SPEC. NO.			TM-103 A	

A	1	JJ-116-2	11/7/52	1	AD	USC	AD
ISSUE	ITEM	CHANGED FROM	DATE	CN. NO.	DRAFTS	CHECKER	ENG. APP.

TOLERANCES		SCALE <i>1:1</i>
ALL OTHERS	DEC. DIM. \pm FRAC. DIM. \pm ANGULAR DIM. \pm	DRILL, PUNCH, COMMERCIAL STOCK SIZES AND MANUFACTURERS TOLERANCES ARE NOT INCLUDED.

IF IT IS FOUND DESIRABLE TO CHANGE ANY TOLERANCE OR OTHER DETAIL SPECIFIED ON THIS DRAWING NOTIFY THE PURCHASER PROMPTLY.

STANDARD DRAWING

TM-104

MAXIMUM ALLOWABLE TOLERANCES HAVE BEEN DETERMINED AND DEVIATIONS WILL BE CAUSE FOR REJECTION. REMOVE ALL BURRS AND SHARP EDGES

USED ON

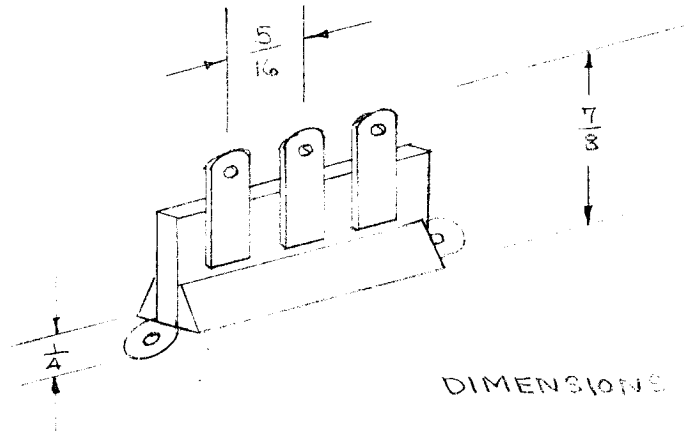
MODEL

PROJECT NO.

ASS'Y. NO.

DATE

T.M.C. NO.	CAT. NO.	MTG. HOLE CENTERS	NO. OF TERMINALS
TM-104-1	2002	1	2
TM-104-2	2003	1 5/16	3
TM-104-3	2004	1 5/8	4
TM-104-4	2005	1 13/16	5
TM-104-5	2006	2 1/4	6
TM-104-6	2007	2 9/16	7
TM-104-7	2008	2 7/8	8
TM-104-8	2009	3 3/16	9
TM-104-9	2010	3 1/2	10
TM-104-10	2011	3 13/16	11
TM-104-11	2012	4 1/8	12
TM-104-12	2013	4 7/16	13



DIMENSIONS FOR REF. ONLY

INSULATION - BAKELITE
 BRACKETS - STEEL - CADMIUM PLATED
 TERMINALS - .019 BRASS, TIN PLATED

REF.: CINCH JONES CO.

REQ.	ITEM	PART NO.	DESCRIPTION	SYMBOL
			THE TECHNICAL MATERIEL CORP. MAMARONECK, NEW YORK	
STOCK SIZE			TERMINAL STRIP	
MATERIAL		WEIGHT PER PC.		
TYPE & TEMPER			C.D.D. 11/18/52	
			DRAWN	ELEC. DES. APP. MECH. DES. APP.
HEAT TREAT. SPEC.			CHECKED	
FINISH & SPEC. NO.			FINAL APPROVAL	
			TM-104	

ISSUE	ITEM	CHANGED FROM	DATE	CN. NO.	DRAFTS	CHECKER	ENG. APP.
TOLERANCES			SCALE				
ALL OTHERS	DEC. DIM. ±		DRILL, PUNCH, COMMERCIAL STOCK SIZES AND MANUFACTURERS TOLERANCES ARE NOT INCLUDED.				
	FRAC. DIM. ± 1/64						
	ANGULAR DIM. ±						

IF IT IS FOUND DESIRABLE TO CHANGE ANY TOLERANCE OR OTHER DETAIL SPECIFIED ON THIS DRAWING NOTIFY THE PURCHASER PROMPTLY.

TM-107 \emptyset

MAXIMUM ALLOWABLE TOLERANCES HAVE BEEN DETERMINED AND DEVIATIONS WILL BE CAUSE FOR REJECTION. REMOVE ALL BURRS AND SHARP EDGES

USED ON

MODEL	PROJECT NO.	ASS'Y. NO.	DATE
DCP			

TMC NO.	CAT. NO.	NO. TERMINALS
TM-107-2	2-150	2

REF: CINCH JONES MFG CO

REQ.	ITEM	PART NO.	DESCRIPTION	SYMBOL
			THE TECHNICAL MATERIEL CORP. MAMARONECK. NEW YORK	
		STOCK SIZE	TERMINAL STRIP	
		MATERIAL WEIGHT PER PC.	BARRIER TYPE	
		TYPE & TEMPER		
		HEAT TREAT. SPEC.		
		FINISH & SPEC. NO.		

\emptyset	ORIGINAL RELEASE	1/20	30				
ISSUE	ITEM	CHANGED FROM	DATE	CN. NO.	DRAFTS	CHECKER	ENG. APP.
TOLERANCES			SCALE				
ALL OTHERS	DEC. DIM. \pm FRAC. DIM. \pm ANGULAR DIM. \pm		DRILL, PUNCH, COMMERCIAL STOCK SIZES AND MANUFACTURERS TOLERANCES ARE NOT INCLUDED.				

DRAWN: [Signature] ELEC. DES. APP. MECH. DES. APP.
 CHECKED: [Signature] FINAL APPROVAL

TM-107 \emptyset

IF IT IS FOUND DESIRABLE TO CHANGE ANY TOLERANCE OR OTHER DETAIL SPECIFIED ON THIS DRAWING NOTIFY THE PURCHASER PROMPTLY.

TM-109

MAXIMUM ALLOWABLE TOLERANCES HAVE BEEN DETERMINED AND DEVIATIONS WILL BE CAUSE FOR REJECTION. REMOVE ALL BURRS AND SHARP EDGES

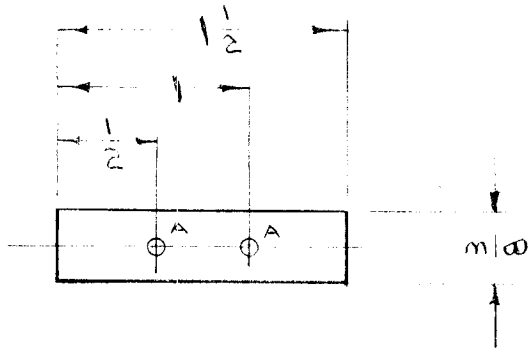
USED ON

MODEL

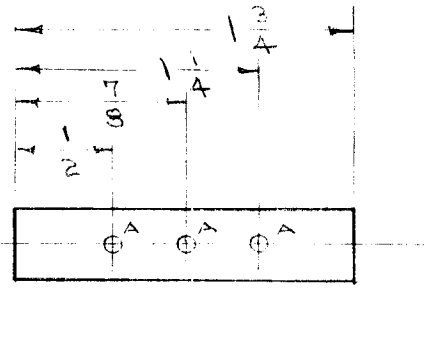
PROJECT NO.

ASS'Y. NO.

DATE



TM-109-1
USED ON A-450



TM-109-2
USED ON A-451

A - 5/64 (.0156), D.

REQ.	ITEM	PART NO.	DESCRIPTION	SYMBOL
		.015 THK.	THE TECHNICAL MATERIEL CORP. MAMARONECK, NEW YORK	
		STOCK SIZE		
		FISH PAPER	TERMINAL STRIP	
		MATERIAL	TO ROLD	
		WEIGHT PER PC.		
		TYPE & TEMPER	CDP 4/24/53	
			DRAWN	ELEC. DES. APP. MECH. DES. APP.
		HEAT TREAT. SPEC.	CHECKED	FINAL APPROVAL
		FINISH & SPEC. NO.		TM-109

ISSUE	ITEM	CHANGED FROM	DATE	CN. NO.	DRAFTS	CHECKER	ENG. APP.
TOLERANCES			SCALE				
ALL OTHERS	DEC. DIM. ± FRAC. DIM. ± 1/64 ANGULAR DIM. ±	DRILL, PUNCH, COMMERCIAL STOCK SIZES AND MANUFACTURERS TOLERANCES ARE NOT INCLUDED.					

IF IT IS FOUND DESIRABLE TO CHANGE ANY TOLERANCE OR OTHER DETAIL SPECIFIED ON THIS DRAWING NOTIFY THE PURCHASER PROMPTLY.

TM-110

MAXIMUM ALLOWABLE TOLERANCES HAVE BEEN DETERMINED AND DEVIATIONS WILL BE CAUSE FOR REJECTION. REMOVE ALL BURRS AND SHARP EDGES

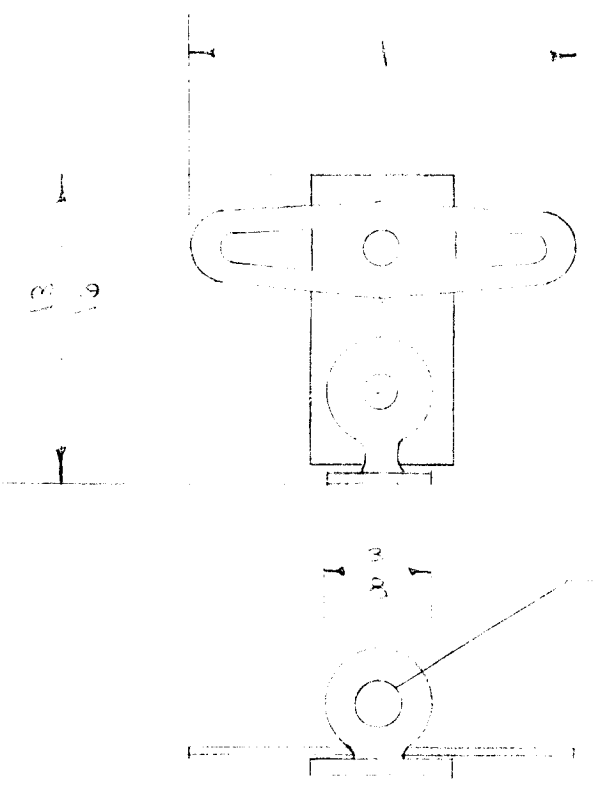
USED ON

MODEL

PROJECT NO.

ASS'Y. NO.

DATE



DIMENSIONS FOR REF. ONLY

REF: BIRNBACH

CAT. NO. 1382 C

REQ.	ITEM	PART NO.	DESCRIPTION	SYMBOL
			THE TECHNICAL MATERIEL CORP. MAMARONECK. NEW YORK	
		STOCK SIZE	TERMINAL	
		MATERIAL	WEIGHT PER PC.	
		TYPE & TEMPER		
		HEAT TREAT. SPEC.		
		FINISH & SPEC. NO.		

ISSUE	ITEM	CHANGED FROM	DATE	CN. NO.	DRAFTS	CHECKER	ENG. APP.
TOLERANCES			SCALE				
ALL OTHERS			DRILL, PUNCH, COMMERCIAL STOCK SIZES AND MANUFACTURERS TOLERANCES ARE NOT INCLUDED.				
DEC. DIM. ±							
FRAC. DIM. ±							
ANGULAR DIM. ±							

ADD 5 7 53
DRAWN
ELEC. DES. APP.
MECH. DES. APP.
CHECKED
FINAL APPROVAL
TM-110

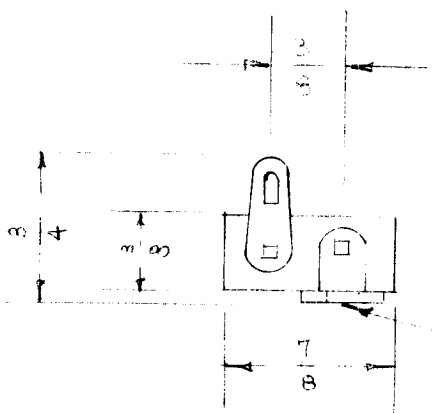
IF IT IS FOUND DESIRABLE TO CHANGE ANY TOLERANCE OR OTHER DETAIL SPECIFIED ON THIS DRAWING NOTIFY THE PURCHASER PROMPTLY.

TM-112

MAXIMUM ALLOWABLE TOLERANCES HAVE BEEN DETERMINED AND DEVIATIONS WILL BE CAUSE FOR REJECTION. REMOVE ALL BURRS AND SHARP EDGES

USED ON

MODEL	PROJECT NO.	ASS'Y. NO.	DATE
DMK-4	140	A-152	9-23-54



#6 MTG HOLE.

DIMENSIONS FOR REF. ONLY

1/16 PHENOLIC STRIP (NEMA XP)
SOLDER COATED BRASS LUGS

REF.: CINCH MFG CO. CAT # 51

REQ.	ITEM	PART NO.	DESCRIPTION	SYMBOL
		#	THE TECHNICAL MATERIEL CORP. MAMARONECK, NEW YORK	
		STOCK SIZE		
		SEE NOTE	TERMINAL STRIP	
		MATERIAL		
		WEIGHT PER PC.		
		TYPE & TEMPER	C.P.R. 9-23-54	
		HEAT TREAT. SPEC.		
		FINISH & SPEC. NO.		
			DRAWN	ELEC. DES. APP. MECH. DES. APP.
			CHECKED	FINAL APPROVAL

ISSUE	ITEM	CHANGED FROM	DATE	CN. NO.	DRAFTS	CHECKER	ENG. APP.
TOLERANCES		SCALE FULL					
ALL OTHERS	DEC. DIM. ± FRAC. DIM. ± ANGULAR DIM. ±	DRILL, PUNCH, COMMERCIAL STOCK SIZES AND MANUFACTURERS TOLERANCES ARE NOT INCLUDED.					

TM-112

IF IT IS FOUND DESIRABLE TO CHANGE ANY TOLERANCE OR OTHER DETAIL SPECIFIED ON THIS DRAWING NOTIFY THE PURCHASER PROMPTLY.

TM-115



MAXIMUM ALLOWABLE TOLERANCES HAVE BEEN DETERMINED AND DEVIATIONS WILL BE CAUSE FOR REJECTION. REMOVE ALL BURRS AND SHARP EDGES

REQ
PER
UNIT

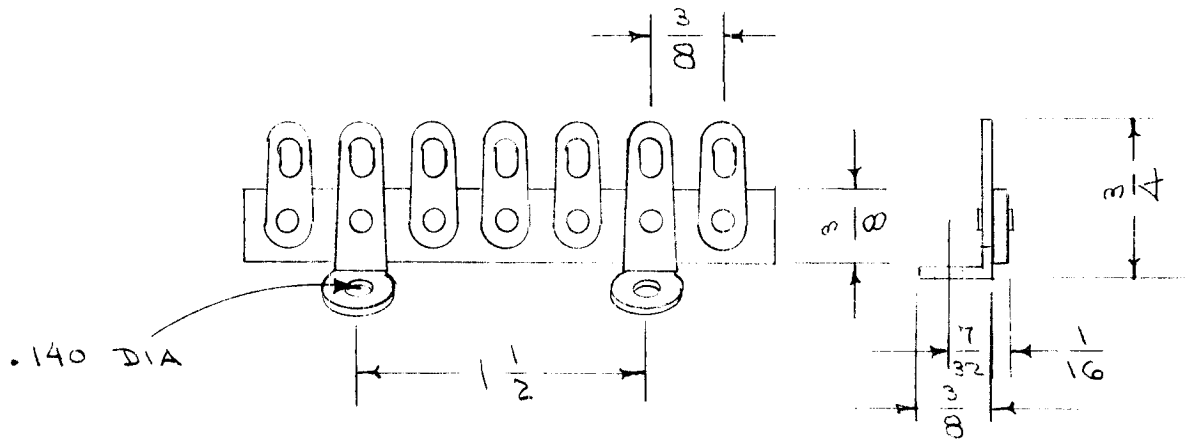
USED ON

MODEL

PROJECT NO.

ASS'Y. NO.

DATE



REF: CINCH JONES DIV.

CAT. NO. 55C

DIMENSIONS FOR REF. ONLY

REQ.	ITEM	PART NO.	DESCRIPTION	SYMBOL
			THE TECHNICAL MATERIEL CORP.	
			MAMARONECK. NEW YORK	
			BAKELITE	TERMINAL STRIP
			MATERIAL	WEIGHT PER PC.
			TYPE & TEMPER	CD.D. 12-15-54
			HEAT TREAT. SPEC.	DRAWN
			FINISH & SPEC. NO.	ELEC. DES. APP. MECH. DES. APP.
				CHECKED
				FINAL APPROVAL
				TM-115

Ø		ORIGINAL RELEASE	DATE	CN. NO.	DRAFTS	CHECKER	ENG. APP.
ISSUE	ITEM	CHANGED FROM	DATE	CN. NO.	DRAFTS	CHECKER	ENG. APP.
TOLERANCES			SCALE				
ALL OTHERS	DEC. DIM. ± FRAC. DIM. ± ANGULAR DIM. ±		DRILL, PUNCH, COMMERCIAL STOCK SIZES AND MANUFACTURERS TOLERANCES ARE NOT INCLUDED.				

STANDARD DRAWING

TM-116

IF IT IS FOUND DESIRABLE TO CHANGE ANY TOLERANCE OR OTHER DETAIL SPECIFIED ON THIS DRAWING NOTIFY THE PURCHASER PROMPTLY.

MAXIMUM ALLOWABLE TOLERANCES HAVE BEEN DETERMINED AND DEVIATIONS WILL BE CAUSE FOR REJECTION.
REMOVE ALL BURRS AND SHARP EDGES

REQ.
PER
UNIT

USED ON

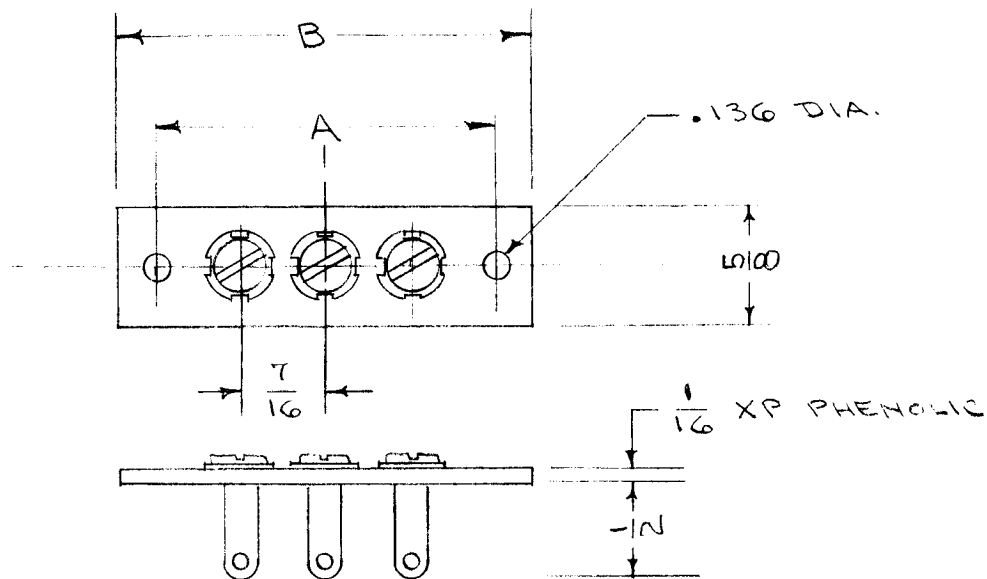
MODEL

PROJECT NO.

ASS'Y. NO.

DATE

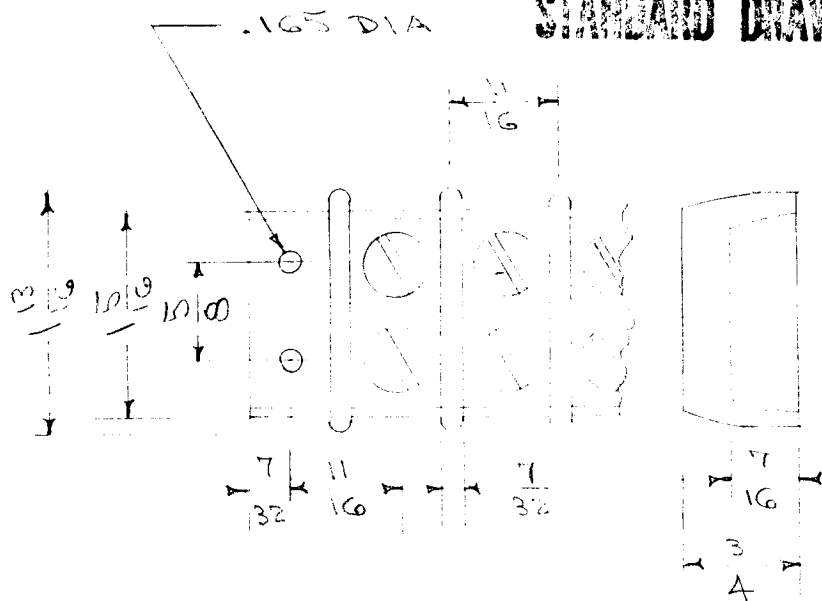
TM C No.	CAT. NO.	NO. TERMS.	A	B
TM-116-1	1737	1	.875	1/4
-2	1781	2	1.312	1 1/16
-3	1783	3	1.750	2/8
-4	1714	4	2.187	2 9/16
-5	1715	5	2.625	3



REQ.	ITEM	PART NO.	DESCRIPTION	SYMBOL
			THE TECHNICAL MATERIEL CORP.	
			MAMARONECK. NEW YORK	
			STRIP, TERMINAL	
		STOCK SIZE		
		MATERIAL	WEIGHT PER PC.	
		TYPE & TEMPER	CDD 4-12-55	
		HEAT TREAT. SPEC.		
		FINISH & SPEC. NO.		
			DRAWN	ELEC. DES. APP.
			CHECKED	FINAL APPROVAL
			TM-116	

ISSUE	ITEM	CHANGED FROM	DATE	CN. NO.	DRAFTS	CHECKER	ENG. APP.
		TOLERANCES	SCALE				
ALL OTHERS		DEC. DIM. ± FRAC. DIM. ± ANGULAR DIM. ±	DRILL, PUNCH, COMMERCIAL STOCK SIZES AND MANUFACTURERS TOLERANCES ARE NOT INCLUDED.				

STANDARD DRAWING



REQ. PER UNIT	USED ON			TM-118
	MODEL	ASS'Y. NO.	DATE	
TRIC NO.	CINCH-JONES CAT. NO.	KUKLA CAT. NO.	NO. OF TERMINALS	
TM-118-1	1-150	602-1	1	
-2	2-150	602-2	2	
-3	3-150	602-3	3	
-4	4-150	602-4	4	
-5	5-150	602-5	5	
-6	6-150	602-6	6	
-7	7-150	602-7	7	
-8	8-150	602-8	8	
-9	9-150	602-9	9	
-10	10-150	602-10	10	

NOTE THAT DASH NO. INDICATES NO. OF TERMINALS

SPECIFICATION:

- 1- PHENOLIC MATERIAL SHALL BE PLAIN BLACK BAKELITE.
- 2- SCREWS:- BINDER HEAD, BRIGHT NICKEL PLATE, 10-32 X 3/8 LONG
- 3- METAL SPACER: BRIGHT NICKEL PLATE.

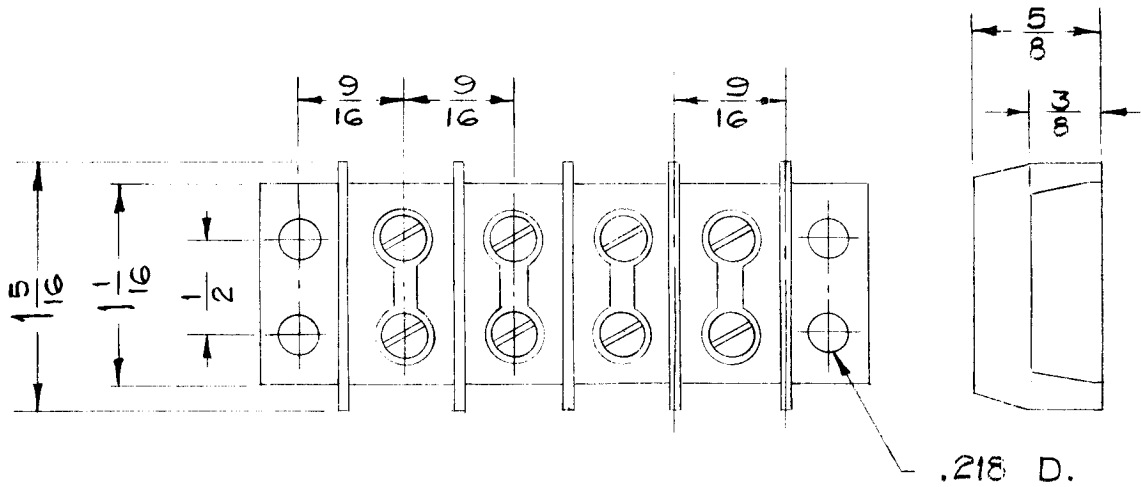
IF THE STRIP IS CUT TO OBTAIN THE REQUIRED LENGTH, THEN, THE FINISHED SURFACE SHALL BE SMOOTH & FREE OF CHIPS OR ROUND EDGES. THE CUT SURFACE SHALL BE COATED WITH A CLEAR FUNGICIDAL MATERIAL.

REF: CINCH JONES & KUKLA ELEC. MFG. CO.

ISSUE	ITEM	CHANGED FROM	DATE	CH. NO.	DRAFTS	CHECKER	ENG. APP.	REQ. ITEM	PART NO.	DESCRIPTION	SYMBOL			
										THE TECHNICAL MATERIEL CORP. MAMARONECK, NEW YORK TERMINAL STRIP, 50 AMP. BARRIER TYPE				
									STOCK SIZE					
									MATERIAL					
TOLERANCES DEC. DIM. ± FRAC. DIM. ± ANGULAR DIM. ±								SCALE: MAXIMUM ALLOWABLE TOLERANCES HAVE BEEN DETERMINED AND ANY DEVIATIONS WILL BE CAUSE FOR REJECTION. REMOVE ALL BURRS AND SHARP EDGES				DRAWN A.J.J.	CHECKED [Signature]	FINAL APPROVAL A.J.J.
								TYPE & TEMPER	HEAT TREAT. SPEC.					
								FINISH & SPEC. NO.	ELEC. DES. APP.	MECH. DES. APP.		TM-118 10/26/50		

STANDARD DRAWING

REQ. PER UNIT	USED ON			TM-120
	MODEL	ASS'Y. NO.	DATE	
			7-16-57	



SPECIFICATION:

1. Phenolic material: Plain black bakelite
2. Screws: Binder head, Bright nickel plate, 8-32 x 3/8.
3. Metal spacer: Bright nickel plate.

NOTE:

If the strip is cut to obtain the required length, then the finished surface shall be smooth & free of chips or round edges. The cut surfaces shall be coated with a clear fungicidal material.

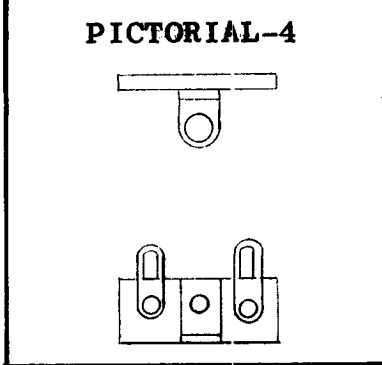
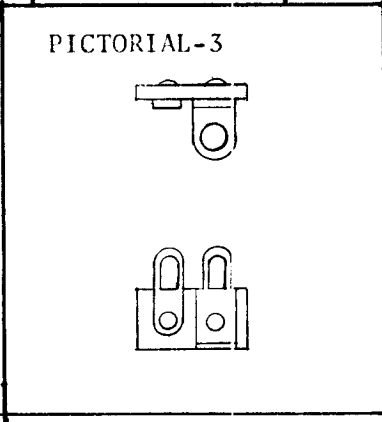
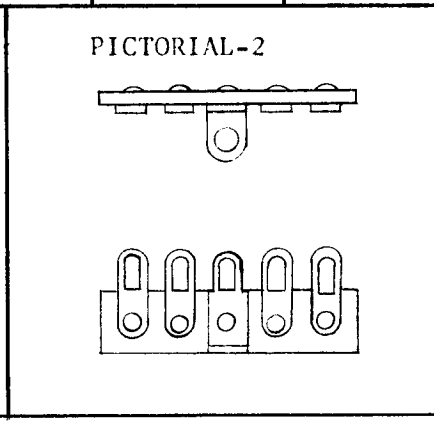
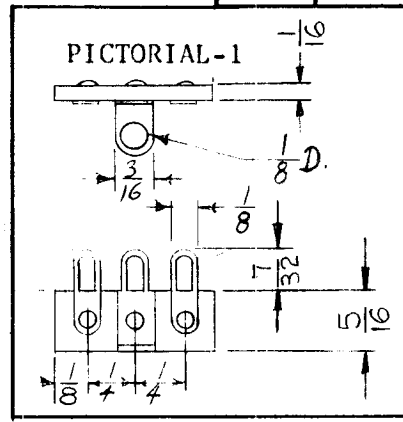
NOMENCLATURE TO BE IN THE FOLLOWING FORM:

$\frac{\text{TM-120}}{\text{TMC DWG. NO.}} - \frac{4}{\text{NO. OF TERMINALS}}$

Ref: Cinch-Jones # 142

ISSUE	ITEM	CHANGED FROM	DATE	CH. NO.	DRAFTS	CHECKER	ENG. APP.	REQ. ITEM	PART NO.	DESCRIPTION	SYMBOL	
										THE TECHNICAL MATERIEL CORP. MAMARONECK. NEW YORK		
										TERMINAL STRIP, BARRIER TYPE		
										SC. 7-16-57 DRAWN CHECKED FINAL APPROVAL		
TOLERANCES			SCALE:					TYPE & TEMPER		HEAT TREAT. SPEC.		TM-120
DEC. DIM. ± FRAC. DIM. ± ANGULAR DIM. ±			MAXIMUM ALLOWABLE TOLERANCES HAVE BEEN DETERMINED AND ANY DEVIATIONS WILL BE CAUSE FOR REJECTION. REMOVE ALL BURRS AND SHARP EDGES					FINISH & SPEC. NO.		ELEC. DES. APP. MECH. DES. APP.		

TMC PT. NO.	MFR NO.	# OF TERM.	PICTORIAL	REQ. PER UNIT	USED ON			TM-121	B
					MODEL	ASSY. NO.	DATE		
TM-121-1	M-121(W/1/8 Mtg. Hole)	3	1				7-27-60		
TM-121-2	M-11211(W/1/8 Mtg Hole)	5	2						
TM-121-3	M-12(W/1/8 Mtg. Hole)	2	3						
TM-121-4	M-131(W/1/8 Mtg. Hole)	3	4						



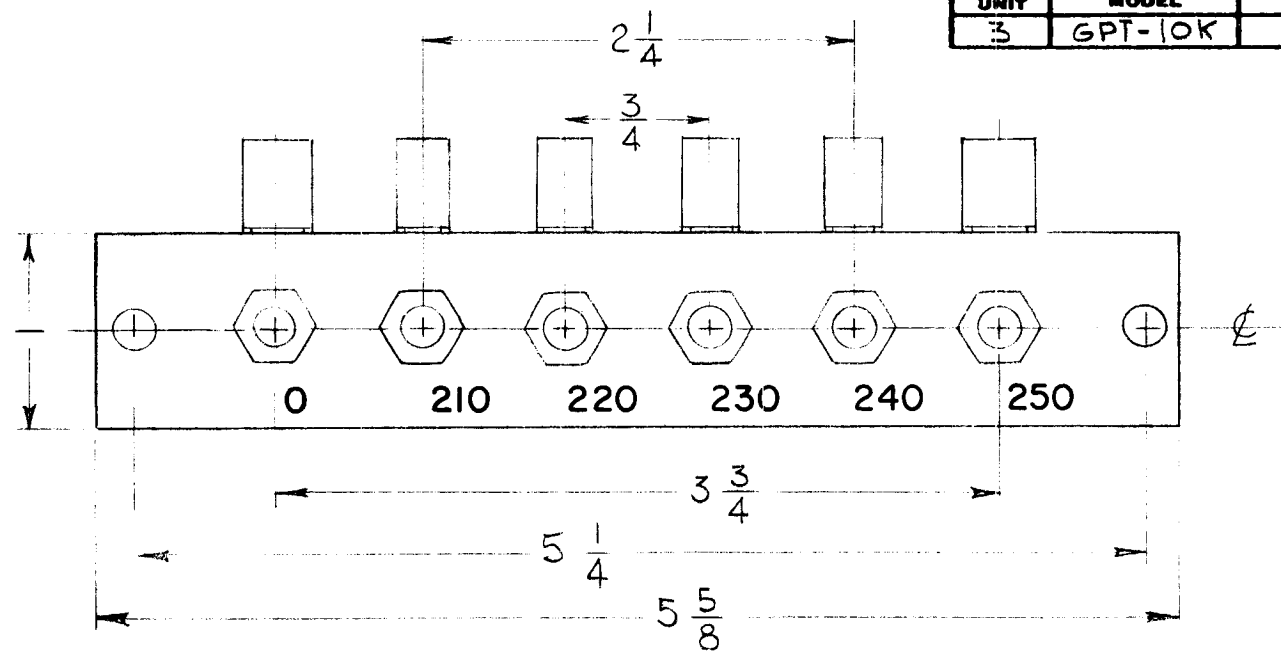
NOTES:

1. All dimensions shown in Pictorial 1 are typical for all other types unless otherwise specified.
2. Lugs & brackets= Brass, Cadmium Plated.
3. Insulation Board= XP Phenolic, 1/16 Thk, Natural.

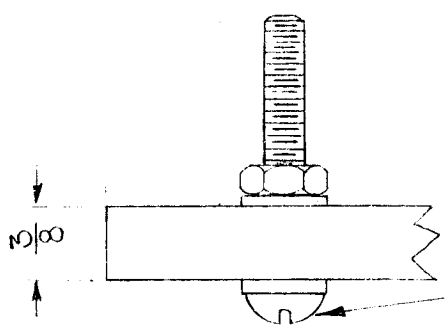
ISSUE	ITEM	CHANGED FROM	DATE	CH. NO.	DRAFTS	CHECKER	ENG. APP.	REQ.	ITEM	PART NO.	DESCRIPTION	SYMBOL	
B	1	TM-121-4 ADDED	3-9-62	6493	E.E.	<i>[Signature]</i>	<i>[Signature]</i>				THE TECHNICAL MATERIEL CORP. MAMARONECK, NEW YORK <i>TERMINAL STRIP</i> MINIATURE		
	2	Drawing Revised & Clarified	12-26-61	6084	E.E.	<i>[Signature]</i>	<i>[Signature]</i>						
	1	TM-121-2,3 Added											
TOLERANCES			SCALE: S401-150										
DEC. DIM. ± FRAC. DIM. ± ANGULAR DIM. ±			MAXIMUM ALLOWABLE TOLERANCES HAVE BEEN DETERMINED AND ANY DEVIATIONS WILL BE CAUSE FOR REJECTION. REMOVE ALL BURRS AND SHARP EDGES					TYPE & TEMPER	HEATTREAT. SPEC.	DRAWN	CHECKED	FINAL APPROVAL	
										<i>R.P.S.</i>		TM-121	B
								FINISH & SPEC. NO.		ELEC. DES. APP MECH. DES. APP			

REQ. PER. UNIT 3	USED ON		
	MODEL GPT-10K	ASS'Y. NO.	DATE 1-17-61

TM-122



BLACK PHENOLIC
LINEN BASE
3/8 THICK
LETTERING 1/8 HIGH WHITE GOTHIC



1/4-20 RH BOLT 1 3/8 LONG
6 REQ.

SUPPLIED W/6 SPLIT LOCKWASHERS & 6 SOLDER LUGS

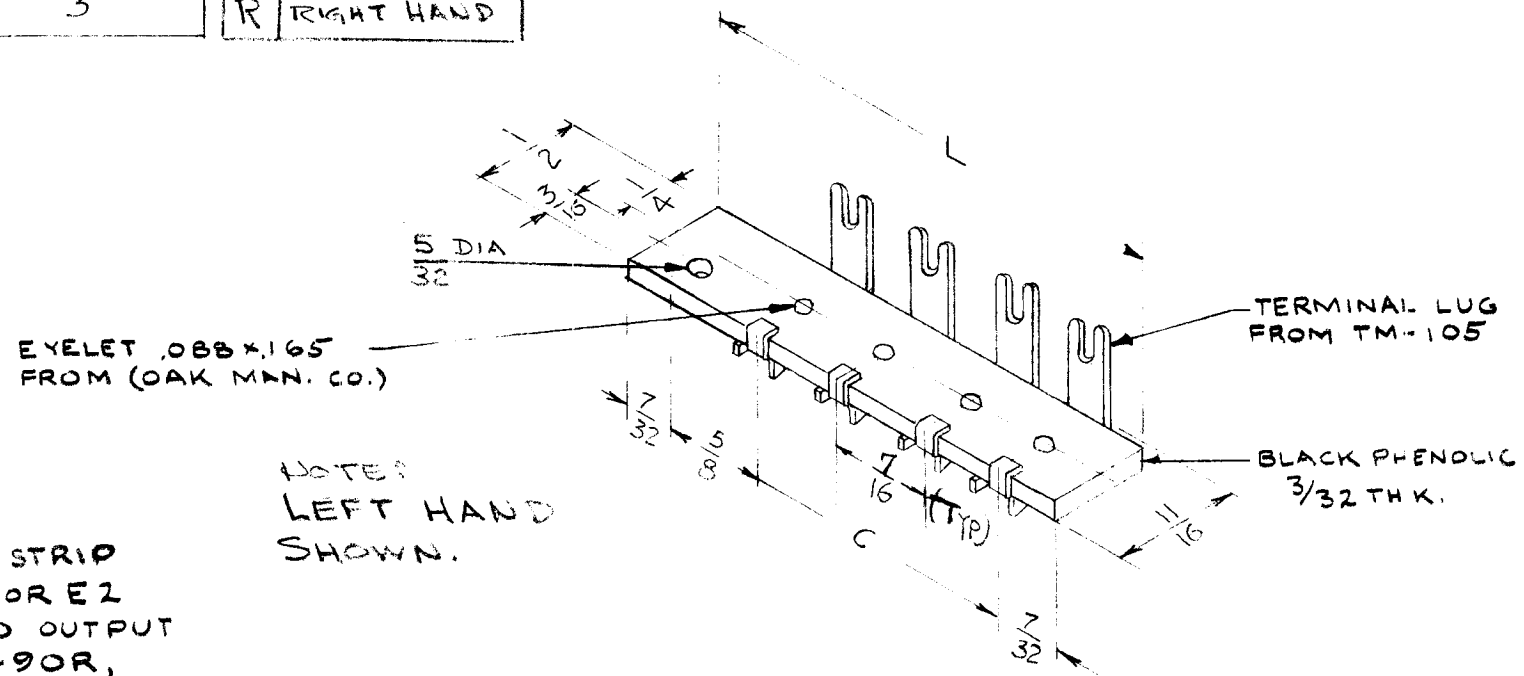
NOTE:
THIS STRIP IS A SPARE PARTS
REPLACEMENT FOR TRANSFORMER TF-203

								REQ.	ITEM	PART NO.	DESCRIPTION		SYMBOL				
											THE TECHNICAL MATERIEL CORP.						
											MAMARONECK, NEW YORK						
											TERMINAL STRIP						
ISSUE	ITEM	CHANGED FROM	DATE	CH. NO.	DRAFTS	CHECKER	ENG. APP.	MATERIAL		DRAWN		CHECKED		FINAL APPROVAL			
TOLERANCES			SCALE:					TYPE & TEMPER		HEAT TREAT. SPEC.		DRAWN		CHECKED		FINAL APPROVAL	
DEC. DIM. ±			MAXIMUM ALLOWABLE TOLERANCES HAVE BEEN DETERMINED AND ANY DEVIATIONS WILL BE CAUSE FOR REJECTION. REMOVE ALL BURRS AND SHARP EDGES									Schwartz		A Se		O B	
FRAC. DIM. ±								FINISH & SPEC. NO.		ELEC. DES. APP		MECH. DES. APP		TM-122			
ANGULAR DIM. ±																	

C	L	No TERMINALS	SYM	TYPE
1.512	2 3/8	4	L	LEFT HAND
1.750	2 13/16	5	R	RIGHT HAND

REQ. PER. UNIT	USED ON		
	MODEL	ASS'Y. NO.	DATE
	SYM-1023		2-8-61

TM-123



NOTE:
SPECIAL FANNING STRIP
TO MATE WITH E1 OR E2
ANT INPUT & AUDIO OUTPUT
ON GPR-90, GPR-90R,
GPR90RX AND GPR90RXD.

NOTE:
LEFT HAND
SHOWN.

NO. OF TERMINALS TO BE AS FOLLOWS

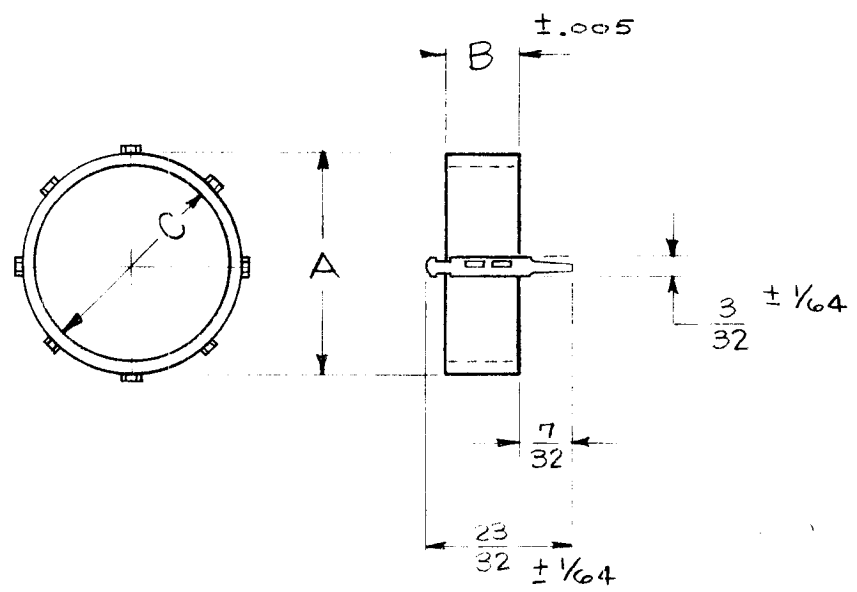
TM-123-4-L
BASE NO. NO. OF TERMINALS
(SEE CHART)

ISSUE	ITEM	CHANGED FROM	DATE	CH. NO.	DRAFTS	CHECKER	ENG. APP.	REQ.	ITEM	PART NO.	DESCRIPTION	SYMBOL					
								<p>THE TECHNICAL MATERIEL CORP. MAMARONECK, NEW YORK.</p>									
								<p>FANNING STRIP FOR TM-116</p>									
<p>TOLERANCES</p>								<p>SCALE:</p>									
<p>DEC. DIM. ± FRAC. DIM. ± ANGULAR DIM. ±</p>								<p>MAXIMUM ALLOWABLE TOLERANCES HAVE BEEN DETERMINED AND ANY DEVIATIONS WILL BE CAUSE FOR REJECTION. REMOVE ALL BURRS AND SHARP EDGES</p>									
								<p>TYPE & TEMPER</p>		<p>HEAT TREAT. SPEC.</p>		<p>DRAWN</p>		<p>CHECKED</p>		<p>FINAL APPROVAL</p>	
								<p>FINISH & SPEC. NO.</p>		<p>ELEC. DES. APP</p>		<p>MECH. DES. APP</p>		<p>TM-123</p>			

THE CONTENTS OF THIS DRAWING ARE THE EXCLUSIVE PROPERTY OF THE TECHNICAL MATERIEL CORP. ITS UNAUTHORIZED USE FOR REPRODUCTION IN WHOLE OR IN PART IS STRICTLY FORBIDDEN.

REQ. PER UNIT	USED ON		TM 124	O
	MODEL	ASS'Y. NO.		
---	VLR-1, LFS-1	---	5-28-63	

TMC PART NO.	A	B	C	TERMINALS	MATERIAL
TM-124-1	1-1/16	.355	15/16	8 SPACED 45°	PHENOLIC #22 STAPLING GRADE
TM-124-2	11/16	.355	5/8	5 SPACED 72°	PHENOLIC #22 STAPLING GRADE
TM-124-3	11/16	.355	5/8	4 SPACED 90°	PHENOLIC #22 STAPLING GRADE

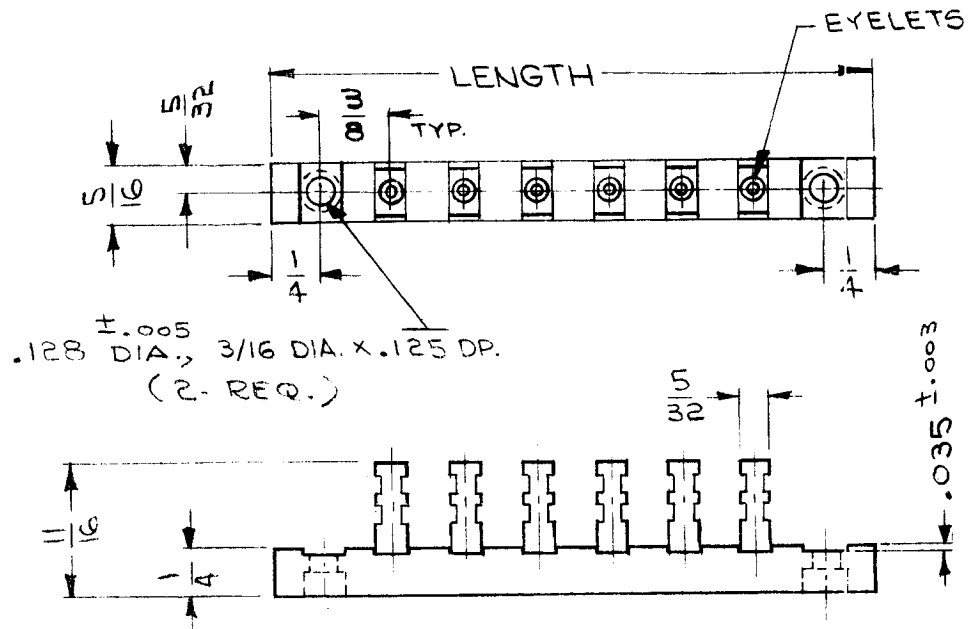


NOTE:
TERMINALS - HOT TINNED
PHOSPHOR BRONZE.

SYM	DESCRIPTION	DATE	CH. NO.	DRAFTS	CHECKER	ENG. APP.	REQ. ITEM	PART NO.	M. GELLMAN DESCRIPTION		SYMBOL
O	ORIGINAL RELEASE FOR PRODUCTION	5/11/64	O	A.M.	(Signature)		---	---	THE TECHNICAL MATERIEL CORP. MAMARONECK, NEW YORK		
							---	---	COLLAR, TERMINAL		
	UNLESS OTHERWISE SPECIFIED DIMENSIONS ARE IN INCHES AND INCLUDE CHEMICALLY APPLIED OR PLATED FINISHES	SCALE	NONE				---	---	MATERIAL		
							---	---	TYPE & TEMPER	HEAT TREAT. SPEC.	
	DECIMALS .X ±.05 .XX ±.01 .XXX ±.005	FRACTIONS ± 1/64 ANGLES ± 0° 30'	CODE	401-212			---	---	DRAWN	CHECKED	FINAL APPROVAL
	TOLERANCES						---	---	(Signature)	(Signature)	TM 124 O
							---	---	ELEC. DES. APP.	MECH. DES. APP.	
							FINISH & SPEC. NO.				

TMC PART NUMBER	NO. OF TERMINALS	LENGTH	REQ. PER UNIT	USED ON		
				MODEL	ASS'Y. NO.	DATE
				ARCA-1		4-7-64
TM-127-1	1	1 1/4"				
TM-127-2	2	1 5/8"				
TM-127-3	3	2"				
TM-127-4	4	2 3/8"				
TM-127-5	5	2 3/4"				
TM-127-6	6	3 1/8"				
TM-127-7	7	3 1/2"				
TM-127-8	8	3 7/8"				
TM-127-9	9	4 1/4"				
TM-127-10	10	4 5/8"				

TM-127 0



SPECIFICATIONS

BOARD MATERIAL: BM 120 BAKELITE

TERMINALS:

- (A) MATERIAL: .031 BRASS
- (B) FINISH: HOT TIN DIP
- (C) TYPE: DOUBLE RIGHT ANGLE SOLDER LUG
- (D) CURRENT RATING: NOT RATED
- (E) VOLTAGE RATING: NOT RATED

SYM	DESCRIPTION	DATE	CH. NO.	DRAFTS	CHECKER	ENG. APP.	REQ. ITEM	PART NO.	F. EATON	DESCRIPTION	SYMBOL				
0	ORIGINAL RELEASE FOR PRODUCTION	4-20-64	0	A.M.						THE TECHNICAL MATERIEL CORP. MAMARONECK. NEW YORK					
X	EXPER. RELEASE	4-7-64	1	<i>E. L...</i>	@					TERMINAL STRIP BARRIER TYPE					
	UNLESS OTHERWISE SPECIFIED DIMENSIONS ARE IN INCHES AND INCLUDE CHEMICALLY APPLIED OR PLATED FINISHES	SCALE													
	DECIMALS .X ± .05 .XX ± .01 .XXX ± .005	FRACTIONS ± 1/64 ANGLES, ± 0° 30'	CODE C	3401-176 (110)							TYPE & TEMPER	HEAT TREAT. SPEC.	DRAWN <i>FEE</i>	CHECKED <i>B/S</i>	FINAL APPROVAL TM-127 0