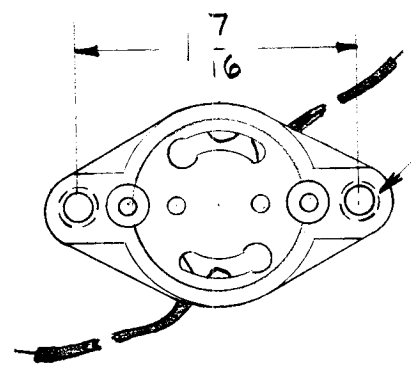


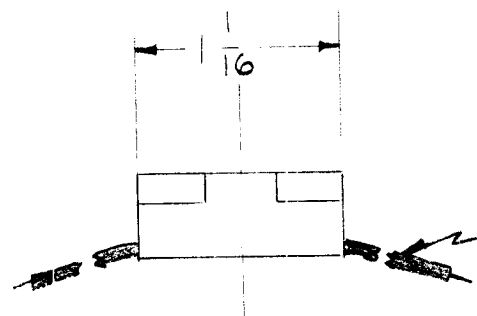
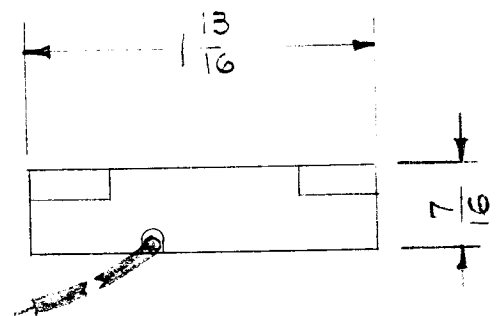
REQ. PER UNIT	USED ON		
	MODEL	ASS'Y. NO.	DATE
2	GPT-10K	AX-173	
2	GPT-40K	AM-109	4-4-60
2	GPT-40K	AT-101	4-4-60

TS-140 A



- 6-32 TAP HOLES
2 REQ.

ELECTRICAL SPECIFICATIONS
660 W
250 V



LEADS - APPROX. $8\frac{3}{4}$ " LG.

FOR STARTER - TMC NO. PO-170

REF: KULKA ELEC. 596

								REQ.	ITEM	PART NO.	DESCRIPTION			SYMBOL		
											THE TECHNICAL MATERIEL CORP. MAMARONECK, NEW YORK					
											SOCKET, STARTER, FLUORESCENT					
A	1	6-32 TAPED HOLES WERE .140 DIA.		1-2-62	6133	L.H.	SM	SM								
ISSUE	ITEM	CHANGED FROM		DATE	CH. NO.	DRAFTS	CHECKER	ENG. APP.								
TOLERANCES				SCALE:						PI	IQ	APB				
DEC. DIM. ±				MAXIMUM ALLOWABLE TOLERANCES HAVE BEEN DETERMINED AND ANY DEVIATIONS WILL BE CAUSE FOR REJECTION. REMOVE ALL BURRS AND SHARP EDGES				TYPE & TEMPER		HEAT TREAT. SPEC.	DRAWN	CHECKED	FINAL APPROVAL			
FRAC. DIM. ±															TS-140	
ANGULAR DIM. ±															A	
								FINISH & SPEC. NO.		ELEC. DES. APP		MECH. DES. APP				