

THE CONTENTS OF THIS DRAWING ARE THE EXCLUSIVE PROPERTY OF THE TECHNICAL MATERIEL CORP. ITS UNAUTHORIZED USE OR REPRODUCTION IN WHOLE OR IN PART IS STRICTLY FORBIDDEN.

REQ. PER UNIT

USED ON

MODEL

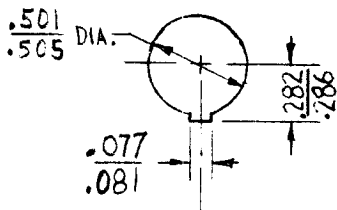
ASS'Y. NO.

DATE

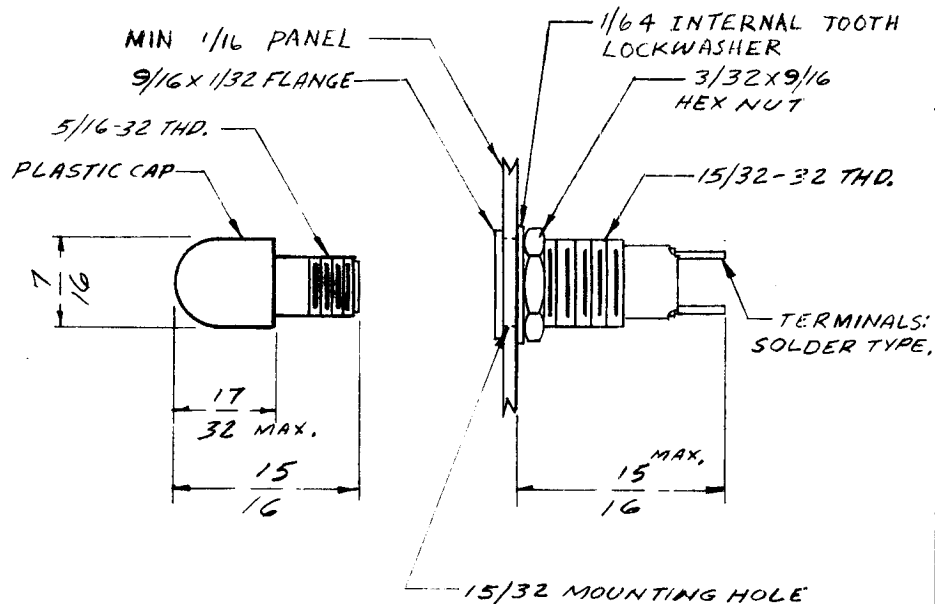
STAND.

10-24-61

TS-154 A



PANEL MOUNTING HOLE



DIM. FOR REF. ONLY

TMC PART NO.	MFG. NO.	LENS COLOR	MILITARY EQUIV.
TS-154-1	137-8536-931	RED	
TS-154-2	NOT AVAILABLE	NOT AVAILABLE	
TS-154-3	137-8536-933	YELLOW (AMBER)	
TS-154-4	NOT AVAILABLE	NOT AVAILABLE	
TS-154-5	137-8536-935	WHITE	
TS-154-6	137-8536-936	LIGHT YELLOW	
TS-154-7	137-8536-937	CLEAR (COLORLESS)	

NOTE:

For spare parts replacement of lens only, see dwg. LI-103.

STANDARD DRAWING

REQ.	ITEM	PART NO.	DESCRIPTION	SYMBOL							
			THE TECHNICAL MATERIEL CORP. MAMARONECK, NEW YORK								
		STOCK SIZE	LIGHT, INDICATOR								
A	PANEL MTG. HOLE ADD.	331-65 13820 J.L. J.L.	SUB-MINIATURE								
SYM	DESCRIPTION	DATE	CH. NO.	DRAFTS	CHECKER	ENG. APP.	MATERIAL				
UNLESS OTHERWISE SPECIFIED: DIMENSIONS ARE IN INCHES TOLERANCES ON FRAC. ± 1/64 DEC. ± .005 ANGLES ± 1/2°		SCALE: 5-401-153(137-8536)		MAXIMUM ALLOWABLE TOLERANCES HAVE BEEN DETERMINED AND ANY DEVIATIONS WILL BE CAUSE FOR REJECTION. REMOVE ALL BURRS AND SHARP EDGES							
							TYPE & TEMPER	HEATTREAT. SPEC.	DRAWN	CHECKED	FINAL APPROVAL
							BLACK NICKEL				
							FINISH & SPEC. NO.				
									W.S. 10-25-61	RUIZZO	CFM
											TS-154 A