

THE CONTENTS OF THIS DRAWING ARE THE EXCLUSIVE PROPERTY OF THE TECHNICAL MATERIEL CORP. ITS UNAUTHORIZED USE OR REPRODUCTION IN WHOLE OR IN PART IS STRICTLY FORBIDDEN.

REQ. PER UNIT

MODEL

USED ON

ASS'Y. NO.

DATE

HFR-1/C

5-1-62

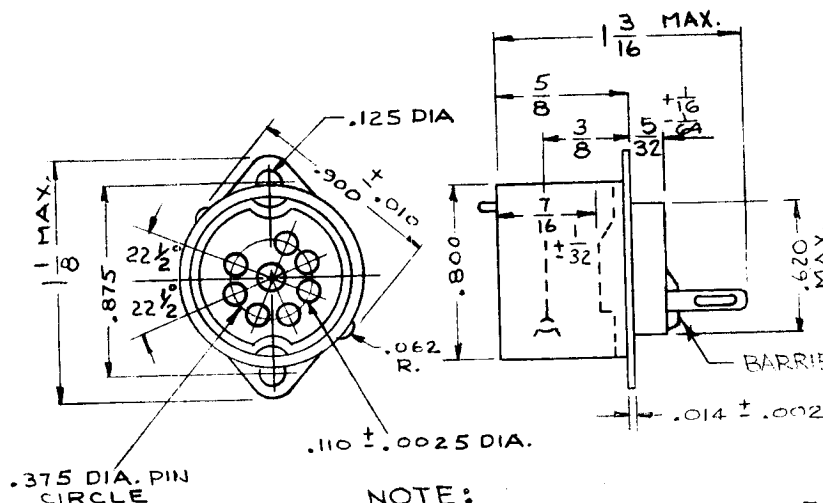
TS-155 B

TYPE INSULATING MATERIAL

TS-155CO1 CERAMIC, GRADE L-4B OR BETTER, JAN-I-10

TS-155 PO1 MOLDED THERMOSETTING PLASTIC MIL-M-14 TYPE MFE

THE SOCKET SHIELD BASE SHALL BE BRASS, NICKEL PLATED. THE CONTACT TABS SHALL BE HOT TIN DIPPED.



NOTE: THIS SOCKET SHALL BE THE SAME AS MIL TYPE TS102CO1 & TS102PO1 EXCEPT FOR REMOVAL OF CENTER SHIELD & NICKEL PLATING.

FOR SHIELD SEE TS-102

							REQ.	ITEM	PART NO.	DESCRIPTION	SYMBOL	
B	SOCKET SHIELD BASE WAS CADMIUM PLATED	8-26-63	9832	AL.	<i>YMC</i>	<i>476</i>				THE TECHNICAL MATERIEL CORP. MAMARONECK, NEW YORK		
A	DELETED SHIELD PICTORIAL, MODEL WAS HFR-1/N ON CHART L-4B WAS L-4B, MIL-M-14 WAS MIL-P-14 .032 DIM WAS CONTACT TAB DIM NOTE: OPTIONAL BARRIER ADDED FINISH WAS NICKEL, DIM .620 WAS .625	4-11-63	8762		<i>[Signature]</i>	<i>[Signature]</i>				SOCKET, 7 PIN MINIATURE (W/O CENTER SHIELD)		
SYM	DESCRIPTION	DATE	CH. NO.	DRAFTS	CHECKER	ENG. APP.				G.S.	<i>[Signature]</i>	
UNLESS OTHERWISE SPECIFIED:		SCALE:					TYPE & TEMPER	HEATTREAT. SPEC.	DRAWN	CHECKED	FINAL APPROVAL	
DIMENSIONS ARE IN INCHES		MAXIMUM ALLOWABLE TOLERANCES HAVE BEEN DETERMINED AND ANY DEVIATIONS WILL BE CAUSE FOR REJECTION.									TS-155 B	
TOLERANCES ON		REMOVE ALL BURRS AND SHARP EDGES										
FRAC. ± 1/64 DEC. ± .005 ANGLES ± 1/2°							FINISH & SPEC. NO.		ELC. DES. APP.	MECH. DES. APP.		