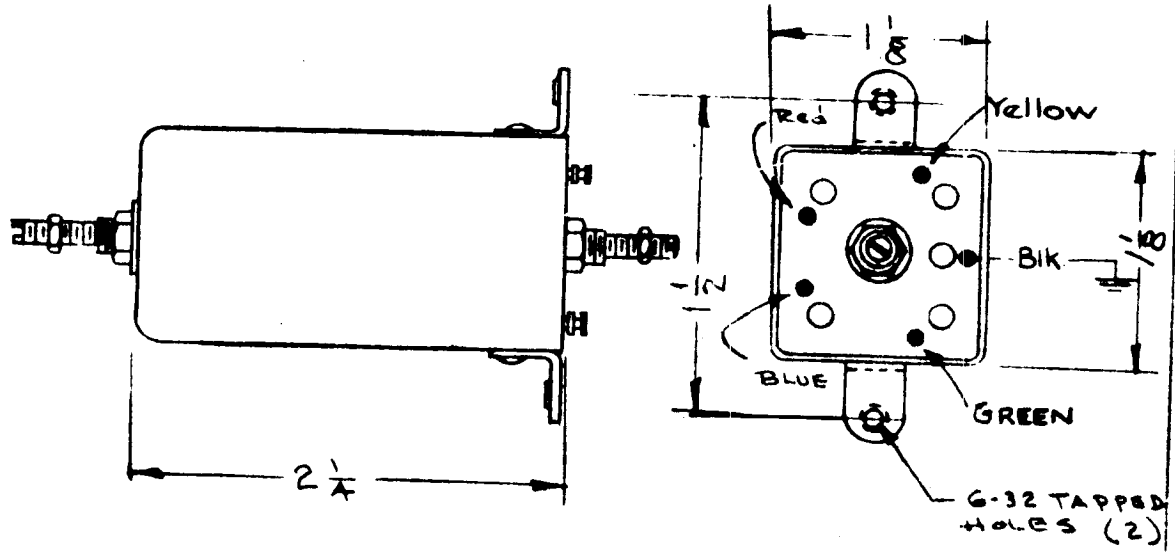


REQ. PER UNIT 1	MODEL SBE-3	USED ON		TT-114	A
		ASSY. NO.	DATE 6-28-60		



ELECTRICAL SPECIFICATIONS

INDUCTANCE-
 L1-205 μ hy (200 to 210)
 L2-205 μ hy (200 to 210)

Q
 L1-35 or Greater at 790 kc.
 L2-35 or Greater at 790 kc.

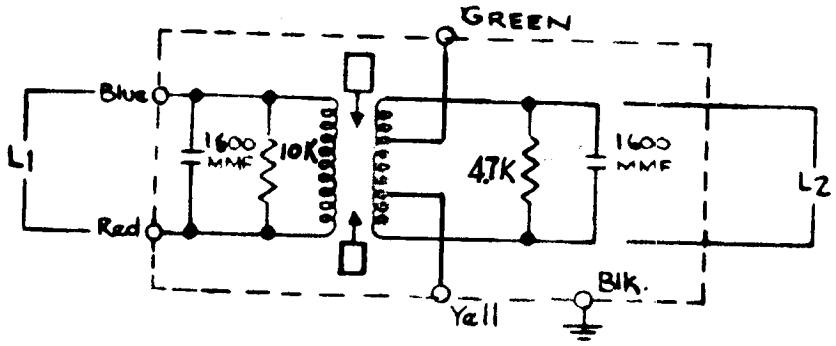
TEST FREQ.
 790 kc.

OPERATING FREQ
 250 kc.

NOTICE TO PERSONS RECEIVING THIS DRAWING

THE TECHNICAL MATERIEL CORPORATION claims proprietary right in the material disclosed hereon. This drawing is issued in confidence for engineering information only and may not be reproduced or used to manufacture anything shown hereon without permission from THE TECHNICAL MATERIEL CORPORATION to the user. This drawing is loaned for mutual assistance and is subject to recall at any time.

Property of:
 THE TECHNICAL MATERIEL CORPORATION
 MAMARONECK, NEW YORK



ISSUE	ITEM	CHANGED FROM	DATE	CH. NO.	DRAFTS	CHECKER	ENG. APP.	REQ. ITEM	PART NO.	DESCRIPTION	SYMB.
A		4.7K WAS 10K	2-28-67	17840						THE TECHNICAL MATERIEL CORP. MAMARONECK, NEW YORK	
TOLERANCES								MATERIAL		250 kc	
SCALE: 2A-1926								TYPE & TEMPER		DRAWN	
DEC. DIM. \pm FRAC. DIM. \pm ANGULAR DIM. \pm								HEAT TREAT. SPEC.		CHECKED	
MAXIMUM ALLOWABLE TOLERANCES HAVE BEEN DETERMINED AND ANY DEVIATIONS WILL BE CAUSE FOR REJECTION. REMOVE ALL BURRS AND SHARP EDGES								FINISH & SPEC. NO.		FINAL APPROVAL	
								ELEC. DES. APP.		MECH. DES. APP.	
										TT-114	
										A	