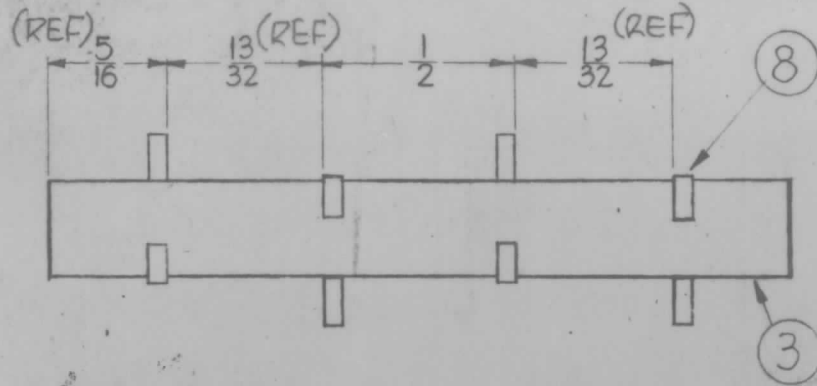
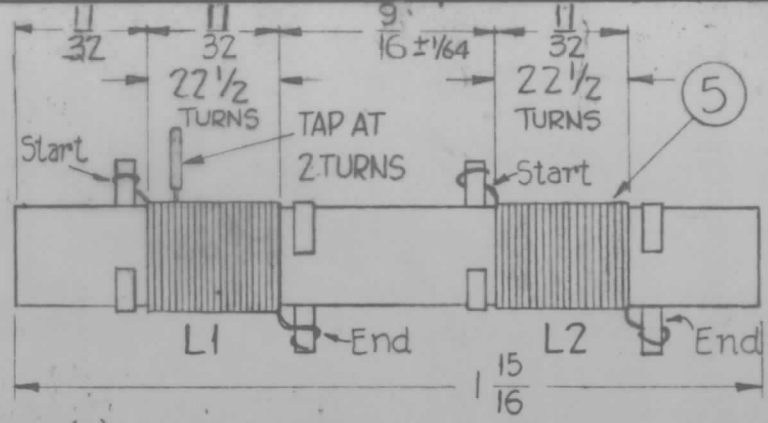


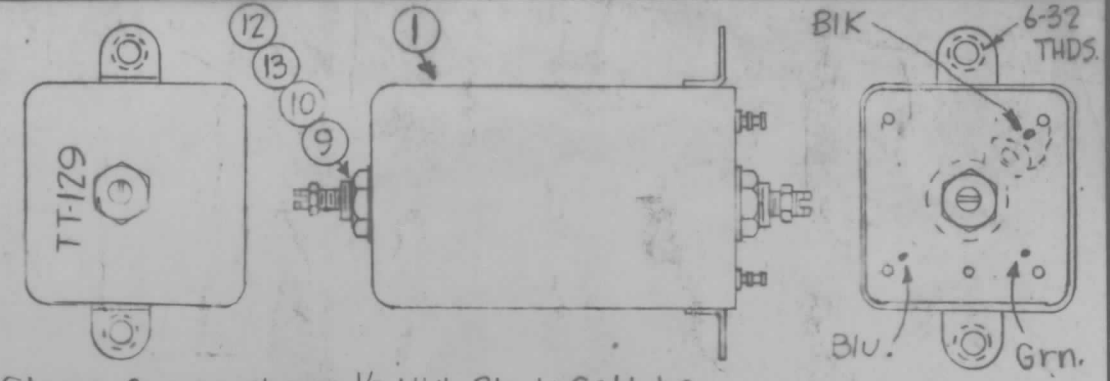
TT129  
B



(1) RING LAYOUT



(2) WINDING DETAIL



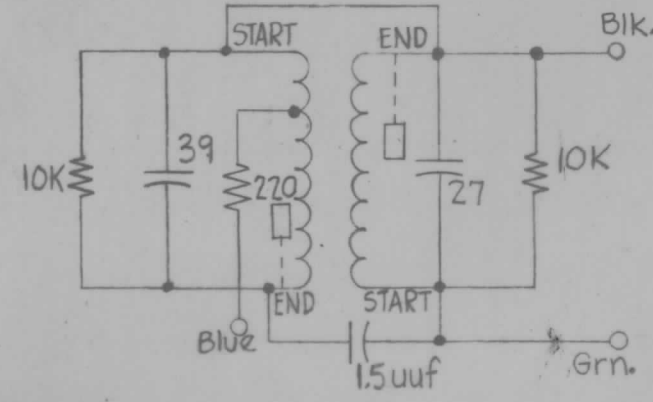
Stamp Can as shown 1/8 High Black Gothic.  
NOTE - Stamp TMC Insignia & Approval on side of can.

WINDING DATA

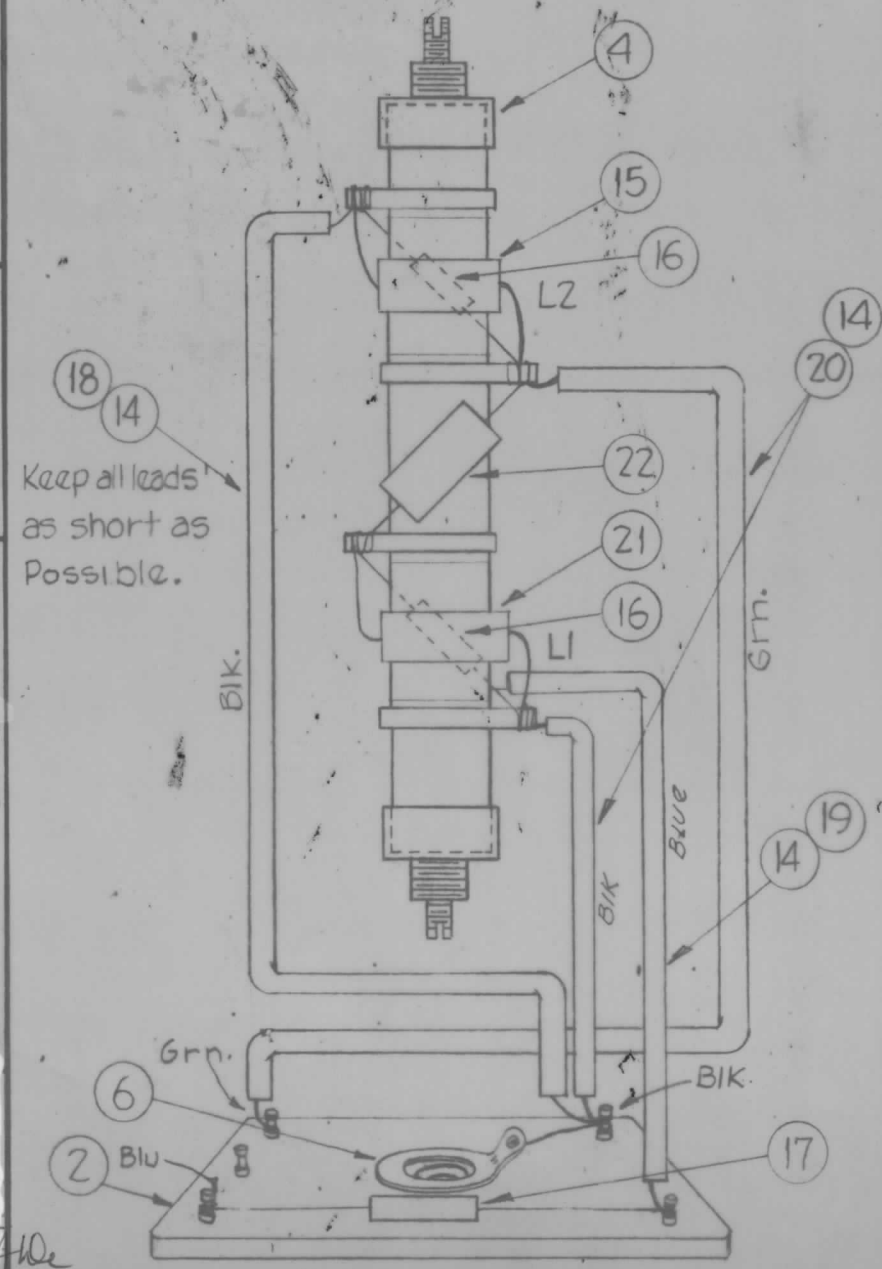
1. Assemble Ring Terminals on form as shown and stake with GL-104-2 (ITEM 7).
2. Wind Coils as specified, staking and coating with GL-104-2.
3. Bake until hard for 1 hour at 215°F.
4. Test and Assemble as shown.

TEST DATA (% CORE)

L1 = 2uh ± 10%      L2 = 2uh ± 10%  
Q = 55 or Greater      Q = 55 or Greater  
FREQ = 7.9 mcs      FREQ = 7.9 mcs  
Use Boonton Radio Corp. Q Meter Model 160A or Equivalent.



SCHEMATIC



Keep all leads as short as possible.

COLOR CODE TERMINAL BOARD AS SHOWN UPPER RIGHT.

REQ.	ITEM	PART NO.	DESCRIPTION	SYMBOL
1	22	CCZISLR5C	Capacitor, Fixed, 1.5uuf	✓
1	21	CM15C390J03	Capacitor, Fixed, 39uuf	
X	20	PX-104-1-.034	Insulation, Sleeving	Black
X	19	PX-104-6-.034	" "	Blue
X	18	PX-104-4-.034	Insulation, Sleeving	Green
1	17	RC20GF221J	Resistor, Fixed, 220ohms	
2	16	RC20GF103J	Resistor, Fixed, 10K ohms	
1	15	CM15C270J03	Capacitor, Fixed, 27 uuf	
X	14	WL-100-7	Wire, Buss-Bar	
2	13	NTH0348BN6	Nut, Hex	
2	12	CI-116-5	Core Tuning	Red
X	11	B5-100	Solder, Soft	
2	10	NTH0832BN10	Nut, Hex	
2	9	LW108MRN	Lockwasher	
4	8	TE-153-1	Terminal Ring	
X	7	GL-104-2	Insulex	
1	6	TE-104-3	Lug	
X	5	WI-123-28	Wire Enamelled	
2	4	SM-140-2	Bushing, Coil Mounting	
1	3	CF-122-1.93	Coil Form 1/4" O.D.	
1	2	PX-586-1	Terminal Board	
1	1	A-1950-1	Can Assembly	

REQ.	ITEM	PART NO.	DESCRIPTION	SYMBOL
THE TECHNICAL MATERIEL CORP, MAMARONECK, NEW YORK				
TRANSFORMER ASSEMBLY				
15MCS TRANSFORMER, 6AU6 GRID				
MATERIAL				
TYPE & TEMPER    HEAT TREAT. SPEC.				
FINISH & SPEC. NO.				
DRAWN			CHECKER	
ELEC. DES. APP.			MECH. DES. APP.	

SYM	DESCRIPTION	DATE	CH. NO.	DRAFTS	CHECKER	ENG. APP.
B	REVISED AND REDRAWN FOR 1" SIZE	7.20.67	18365	WV		EM

UNLESS OTHERWISE SPECIFIED:  
DIMENSIONS ARE IN INCHES  
TOLERANCES ON FRACTIONS ± 1/64    DECIMALS ± .005    ANGLES ± 1/2°

SCALE: Do Not Scale

MAXIMUM ALLOWABLE TOLERANCES HAVE BEEN DETERMINED AND ANY DEVIATIONS WILL BE CAUSE FOR REJECTION. REMOVE ALL BURRS AND SHARP EDGES

REQ. PER UNIT	MODEL	SECTION	ASS'Y. NO.	DATE
1	CHG-1		J.F.	4-4-61
USED ON				