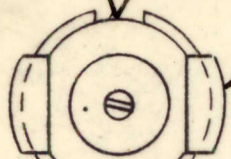


SECONDARY LEADS

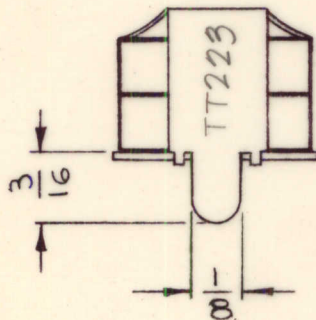
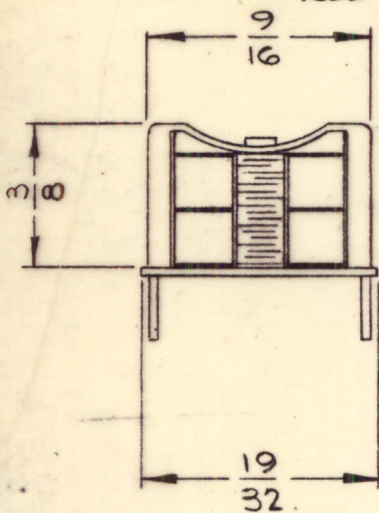
START GREEN  
END - YELLOW



STAMP TMC PART NO.  
3/32 HIGH GOTHIC  
W/ LATEST REV. LETTER

PRIMARY LEADS

START BLUE  
END RED



REQ. PER UNIT	USED ON			TT223	⊕
	MODEL	ASSY. NO.	DATE		
1	LFCA-1	A3723	5-20-65		

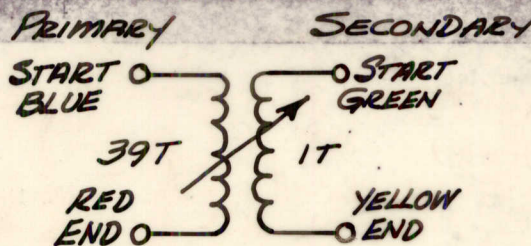
ELECTRICAL SPECS.  
(WITH SLUG INSERTED)

OPERATING FREQUENCY:  
INDUCTANCE @ 790 KCS  
PRIMARY: 250 μh + 5 - 5 μh  
SECONDARY: NOT RATED  
"Q" (PRIMARY) @ 100 KCS: > 560

MECHANICAL SPEC.

URNS  
PRIMARY: 39  
SECONDARY: 1  
RETAINER, BOTTOM: BRASS CAD PLATED  
RETAINER, TOP: NICKEL SILVER H/H

MATERIAL:  
CORE & SLUG: POWDERED IRON



SCHEMATIC DIAGRAM

							REQ. ITEM	PART NO.	POSE	DESCRIPTION	SYMBOL		
									THE TECHNICAL MATERIEL CORP. MAMARONECK, NEW YORK				
							STOCK SIZE		TRANSFORMER, RF, ADJUSTABLE				
⊕ ORIGINAL RELEASE FOR PRODUCTION 5/25/65 M HLA							MATERIAL						
SYM	DESCRIPTION	DATE	CH. NO.	DRAFTS	CHECKER	ENG. APP.	TYPE & TEMPER		HEAT TREAT. SPEC.	DRAWN	CHECKED	FINAL APPROVAL	
UNLESS OTHERWISE SPECIFIED DIMENSIONS ARE IN INCHES AND INCLUDE CHEMICALLY APPLIED OR PLATED FINISHES		SCALE									H. AUSTIN	JCS	MM May 25/65
DECIMALS .X ± .05 .XX ± .01 .XXX ± .005	TOLERANCES	FRACTIONS ± 1/64 ANGLES ± 0° 30'	CODE A	2A-3827			FINISH & SPEC. NO.		ELEC. DES. APP.		MECH. DES. APP.		TT223