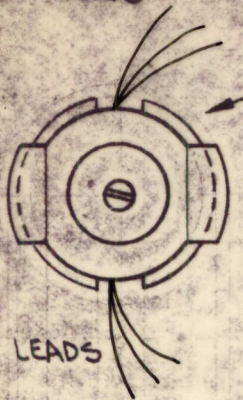


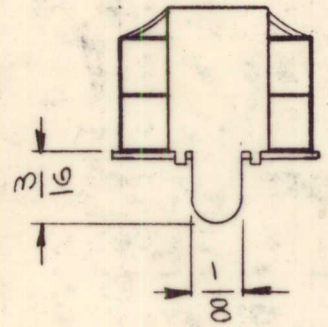
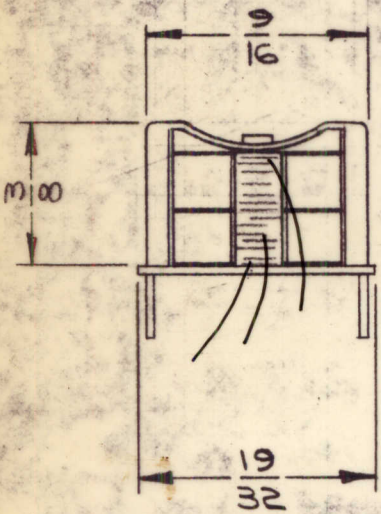
REQ. PER UNIT	USED ON			TT283	A
	MODEL	ASSY. NO.	DATE		
1	CFA-2	A4353	5-25-66		

SECONDARY LEADS



STAMP TMC PART NO.,
3/32 HIGH GOTHIC, WITH
LATEST REVISION LETTER.

PRIMARY LEADS

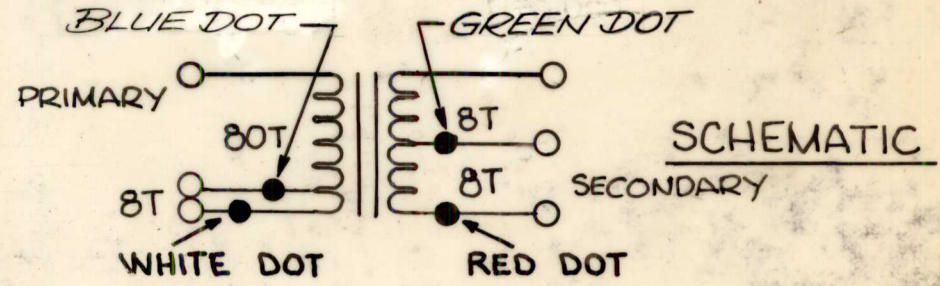


ELECTRICAL SPECIFICATIONS WITH SLUG

PRIMARY IND: 1.36MH ±5%
DC RESISTANCE: APPROX. 1.2Ω
UNLOADED Q: 140 MINIMUM @250KC
SECONDARY: TURNS RATIO 30.25:1
DC RESISTANCE: APPROX. 0.3Ω

MECHANICAL SPECIFICATIONS

TURNS
PRIMARY: 88 TURNS TAPPED AT 8 TURNS
SECONDARY: 16 TURNS CENTER TAPPED
RETAINER, BOTTOM: BRASS CAD PLATED
RETAINER, TOP: NICKEL SILVER H/H
MATERIAL:
CORE & SLUG: POWDERED IRON



A	BLUE & GREEN DOT ADD.	4/29/70	19835	KL	MB	
Ø	ORIGINAL RELEASE FOR PRODUCTION	9/26/66	Ø	CV		
X ₂	RELOC. RED & WHITE DOTS	9-15-66	X ₂	BME		
XI	UNLOADED Q WAS 150 MIN. ASS'Y REF WAS A4458	8-3-66	-M	Jc	Q/B	
X	EXPER. RELEASE	5/25/66	X	Q/J		
SYM	DESCRIPTION	DATE	CH. NO.	DRAFTS	CHECKER	ENG. APP.
UNLESS OTHERWISE SPECIFIED DIMENSIONS ARE IN INCHES AND INCLUDE CHEMICALLY APPLIED OR PLATED FINISHES		SCALE				
		2:1				
DECIMALS .X ± .05 .XX ± .01 .XXX ± .005	TOLERANCES	FRACTIONS ± 1/64 ANGLES ± 0° 30'	CODE A	A4458		

REQ. ITEM	PART NO.	DESCRIPTION	SYMBOL
		THE TECHNICAL MATERIEL CORP. MAMARONECK, NEW YORK	
		TRANSFORMER, R.F.	
TYPE & TEMPER	HEAT TREAT. SPEC.	DRAWN	CHECKED
		G. Sencor	M. Key 9/24/66
FINISH & SPEC. NO.	ELEC. DES. APP.	MECH. DES. APP.	
			TT283 A