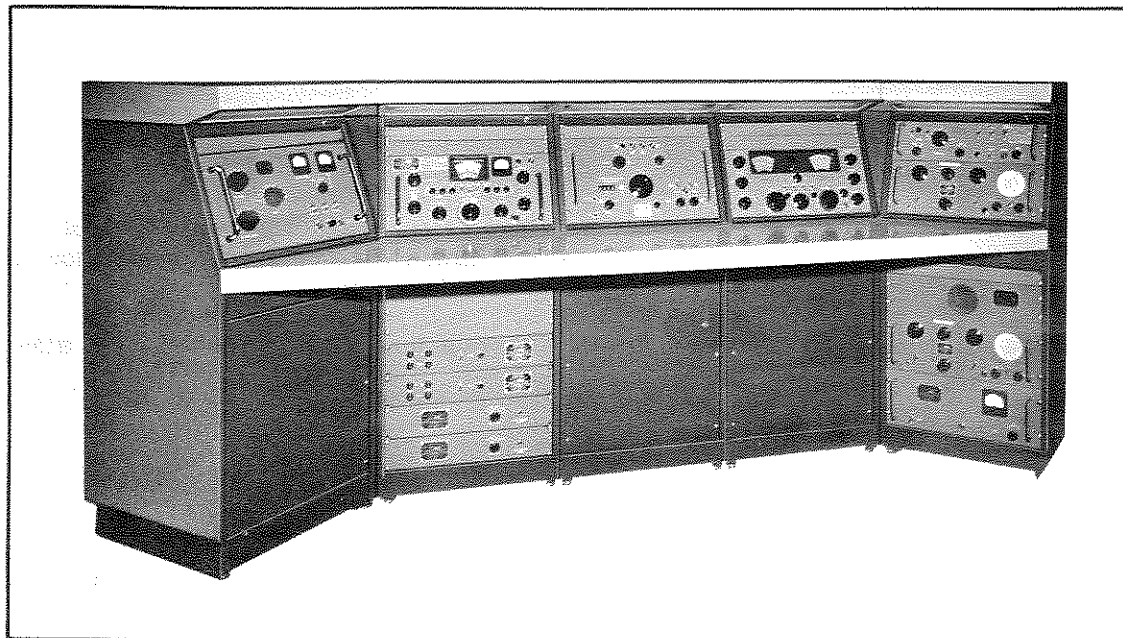


SALES SERVICE BULLETIN NUMBER 211

Model CON, Operating Console

SPECIFICATION FILES



Model CON-5-DCE-W

The TMC Model CON, Operating Console, was specially designed to be used as an operating, monitoring, instrument or supervisory console in commercial, AM, FM, TV broadcasting; Computer, Data Handling, Telemetry, Laboratory, fixed and mobile applications. A "modular" concept based on standard 19" relay rack increments permits straight line, "L" or "U" configurations providing maximum operating efficiency and versatility in a minimum of floor space.

The modular units are constructed of 16 gauge steel, suitably reinforced where necessary, and are finished in TMC blue. Each module is provided with an AC power strip and junction box. Convenient cableways permit internal interconnection of modules. Tops and tables are of waterproof plywood covered with grey formica. Each top section contains indirect lighting for the operating table and equipment. Typewriter wells or hinged typewriter supports are available on request.

TECHNICAL SPECIFICATIONS:

DIMENSIONS: 47 inches high X 21 inches wide X 21 inches deep. (Single unit)

MATERIAL: 16 gauge steel.

FINISH: Console Dark Blue Enamel.
Top and Table Grey Formica.

PANEL OPENING SIZES: Above Table - 12-1/4 inches X 19 inches.
Below Table - 21-1/4 inches X 19 inches.

EQUIPMENT MOUNTING INFORMATION: Standard Relay Rack spacing. 5/8" - 5/8" - 1/2" repeated. Center of first hole 1/4" from either end.

ILLUMINATION: "LUMILITE". Will not affect operation of the equipment. (Specify 110 v. or 220 v. when ordering).

VENTILATION: Openings at base and louvres at top of rear cover. (Information on forced ventilation will be furnished on request.)

POWER: Power strip furnished as part of right side of console.
110/220 v., 50/60 cycle, single phase.

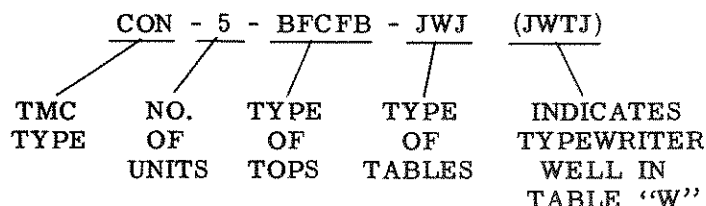
WEIGHT (Single Unit)

| | |
|---------|-------------------------------------|
| Net | Gross |
| 55 lbs. | 80 lbs domestic. 110 lbs export. |

SPECIAL EQUIPMENT: On multiple units where space permits, typewriter wells or hinged typewriter supports will be furnished at your request.
Blank "fill in" panels are also available.

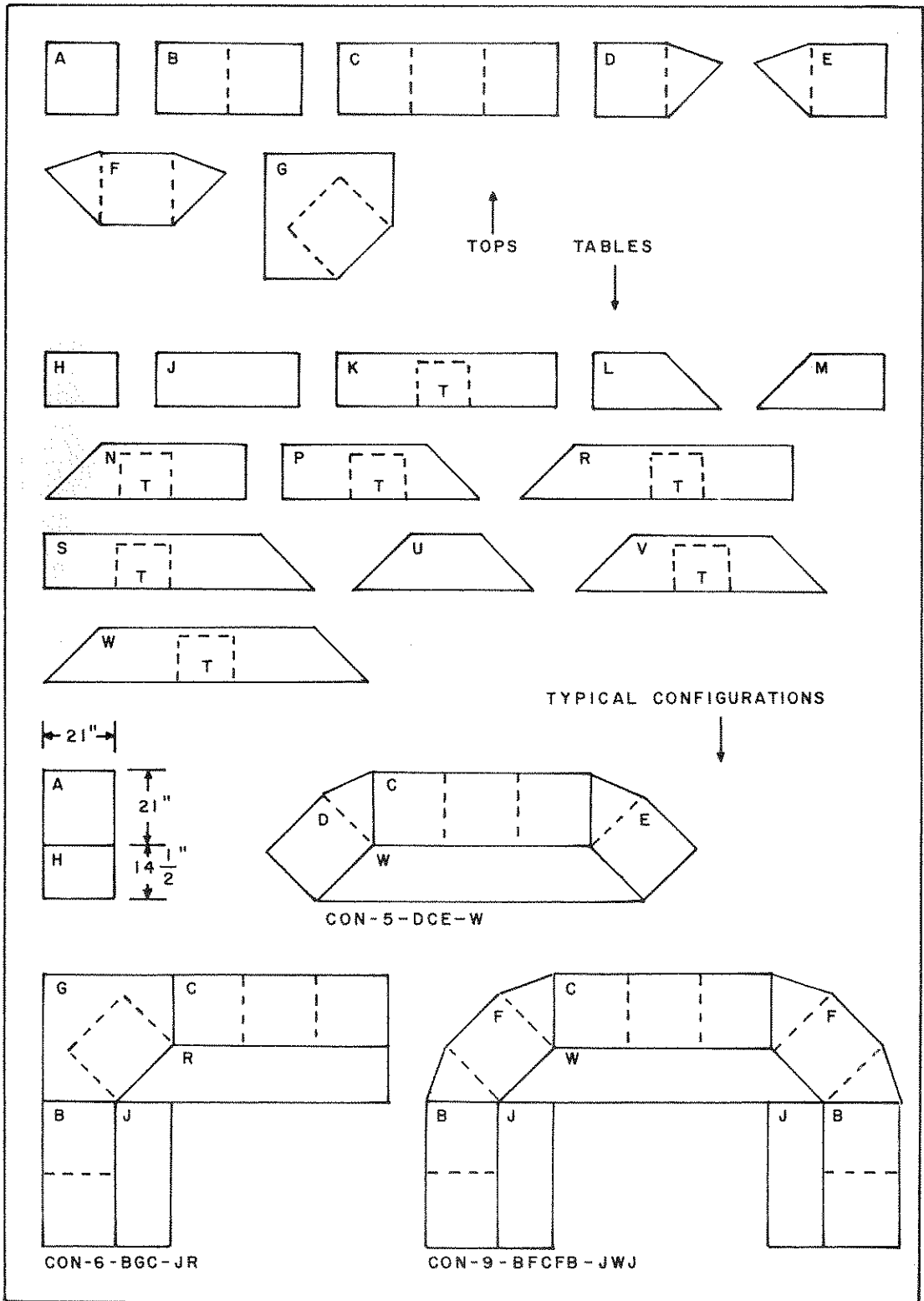
ORDERING INFORMATION:

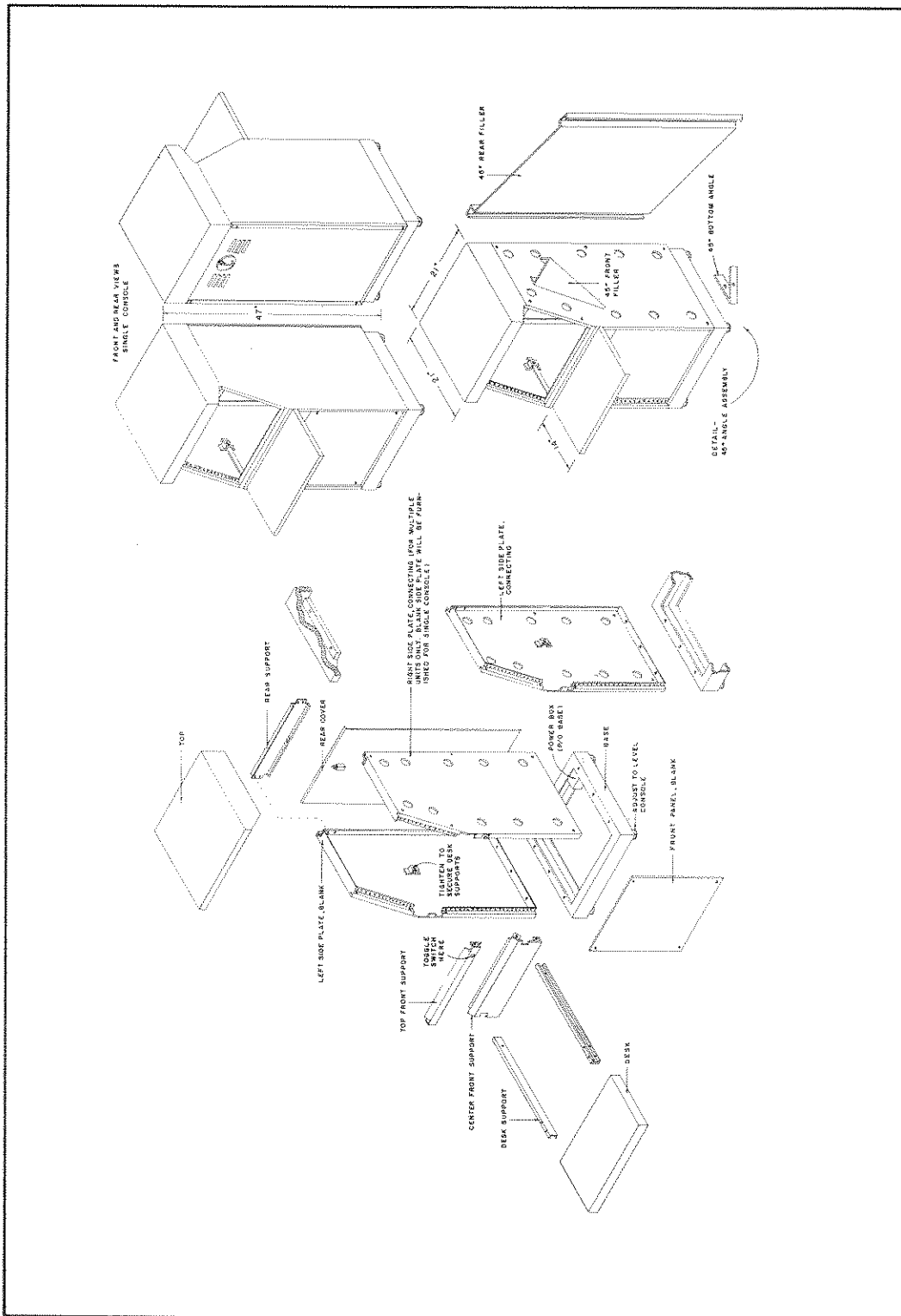
CONSOLE DESIGNATION TO BE IN THE FOLLOWING FORM



TYPEWRITER WELLS ARE AVAILABLE ONLY IN THOSE TABLES AND IN POSITIONS SHOWN BY DOTTED LINES AND THE LETTER "T".

THE FOLLOWING DIAGRAMS ARE THE TOPS AND TABLES AVAILABLE AS WELL AS SOME TYPICAL CONFIGURATIONS.





Exploded View, Single Console

COPYRIGHT, 1958
THE TECHNICAL MATERIEL CORP.

THE TECHNICAL MATERIEL CORPORATION

700 FENIMORE ROAD

MAMARONECK, NEW YORK

CABLE
TEPEI
NEW YORK, N.Y.



COMMUNICATION ENGINEERS

IN CANADA:
TMC (CANADA) LTD.
OTTAWA, ONTARIO