

IF IT IS FOUND DESIRABLE TO CHANGE ANY TOLERANCE OR OTHER DETAIL SPECIFIED ON THIS DRAWING NOTIFY THE PURCHASER PROMPTLY.

MAXIMUM ALLOWABLE TOLERANCES HAVE BEEN DETERMINED AND DEVIATIONS WILL BE CAUSE FOR REJECTION. REMOVE ALL BURRS AND SHARP EDGES

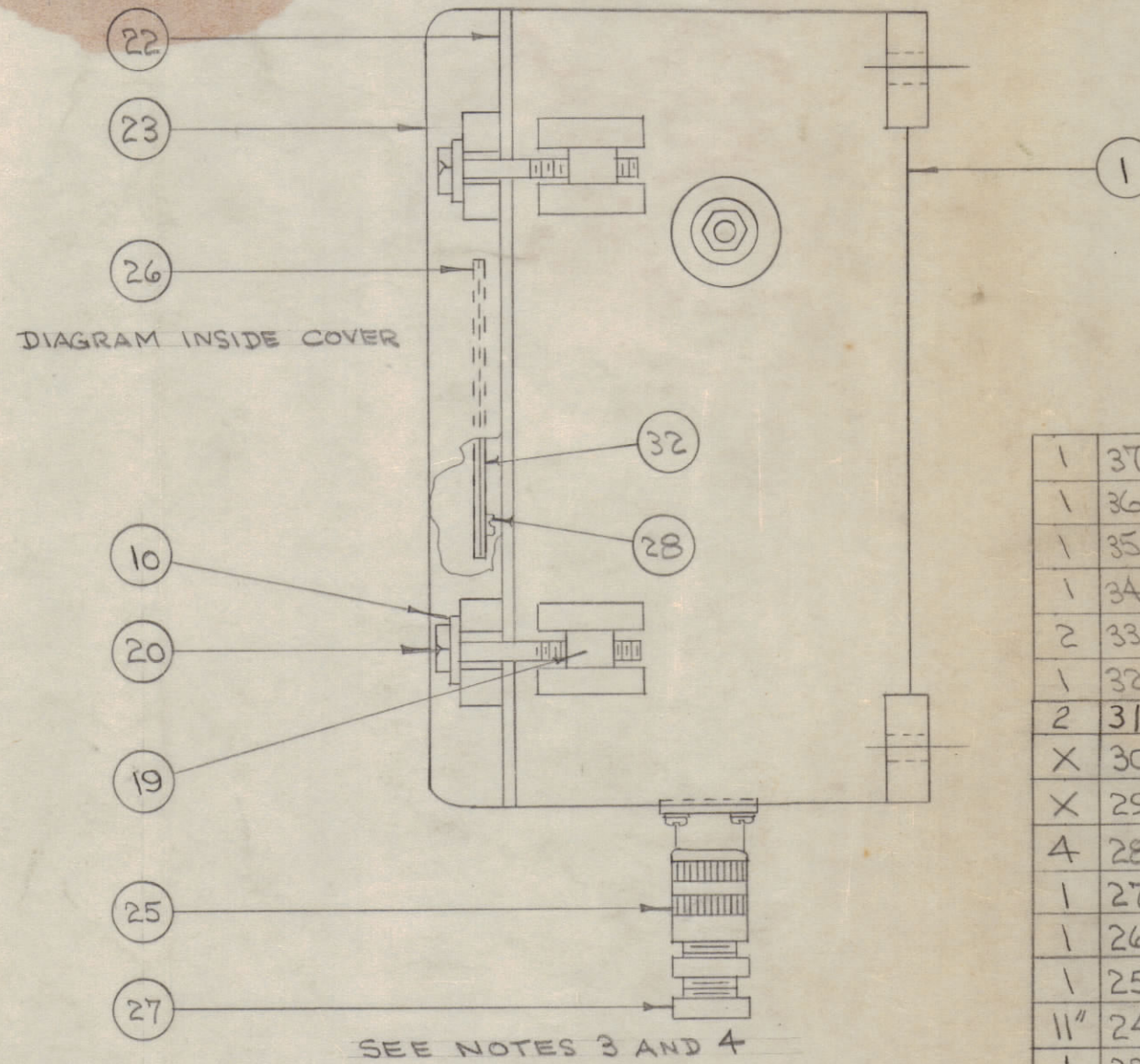
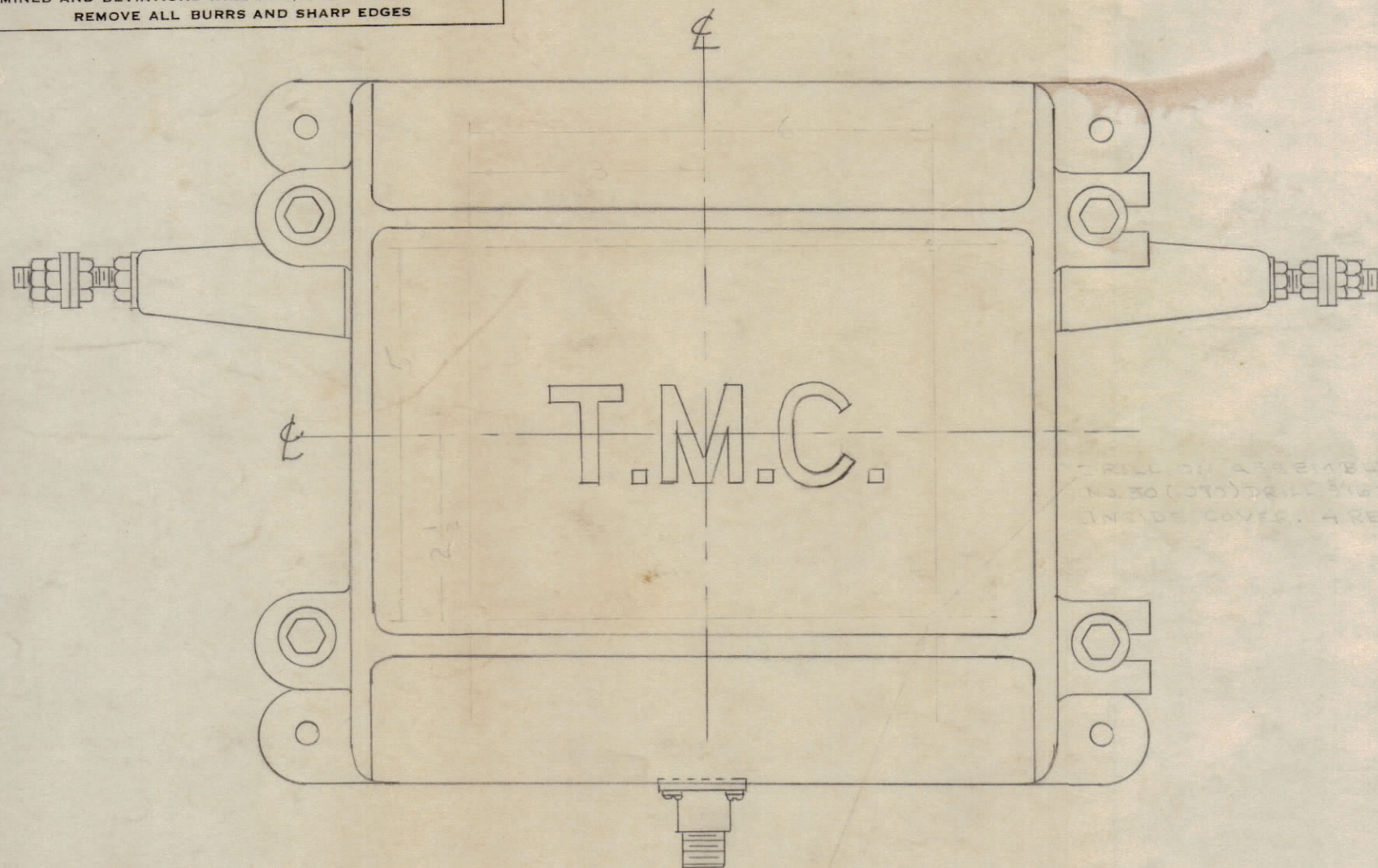
CEMENT ITEM 22 TO ITEM 23 WITH ITEM 30

NOTICE TO PERSONS RECEIVING THIS DRAWING

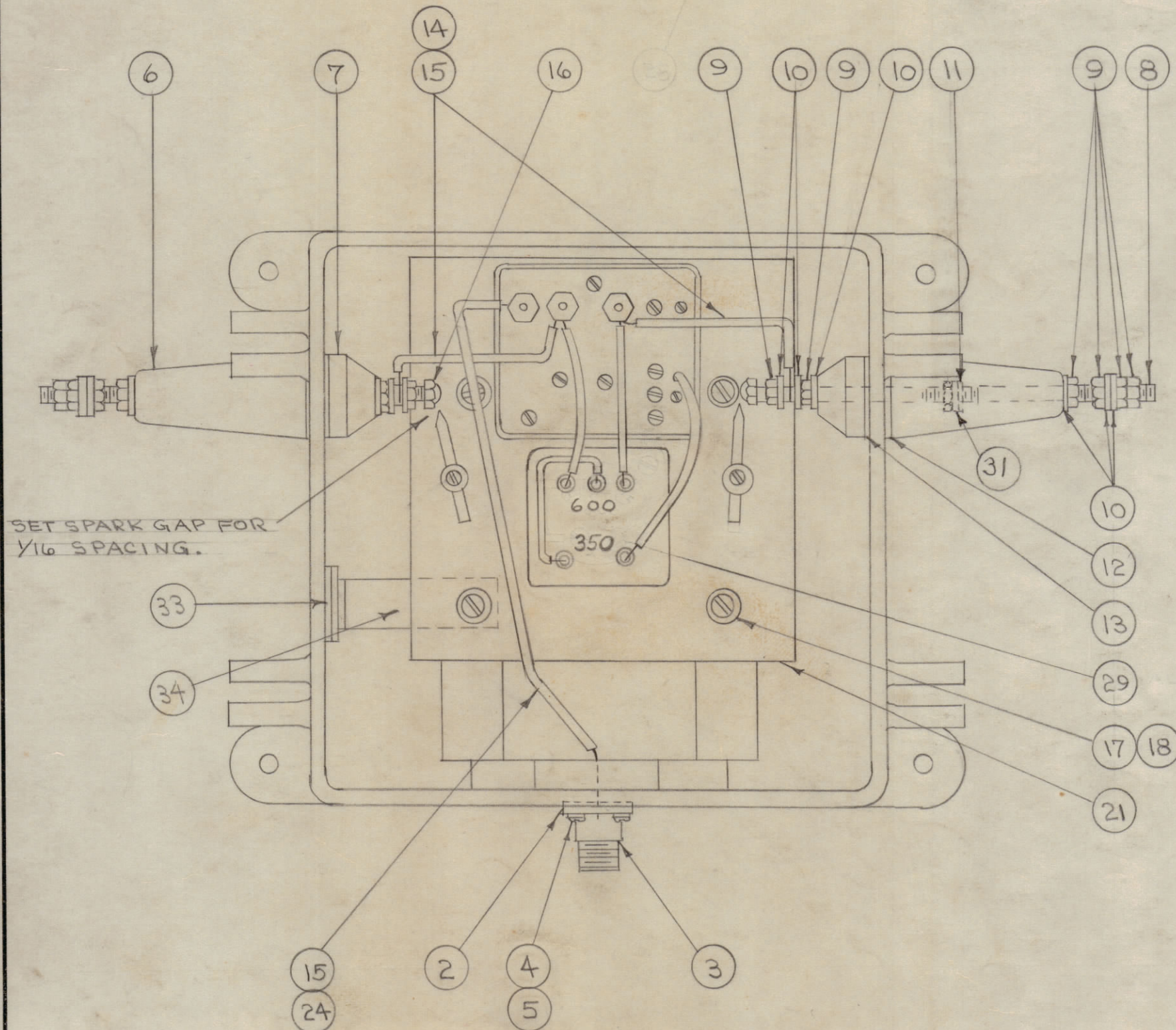
THE TECHNICAL MATERIEL CORPORATION claims proprietary right in the material disclosed hereon. This drawing is issued in confidence for engineering information only and may not be reproduced or used to manufacture anything shown hereon without permission from THE TECHNICAL MATERIEL CORPORATION to the user. This drawing is loaned for mutual assistance and is subject to recall at any time.

Property of:

THE TECHNICAL MATERIEL CORPORATION  
MAMARONECK, NEW YORK

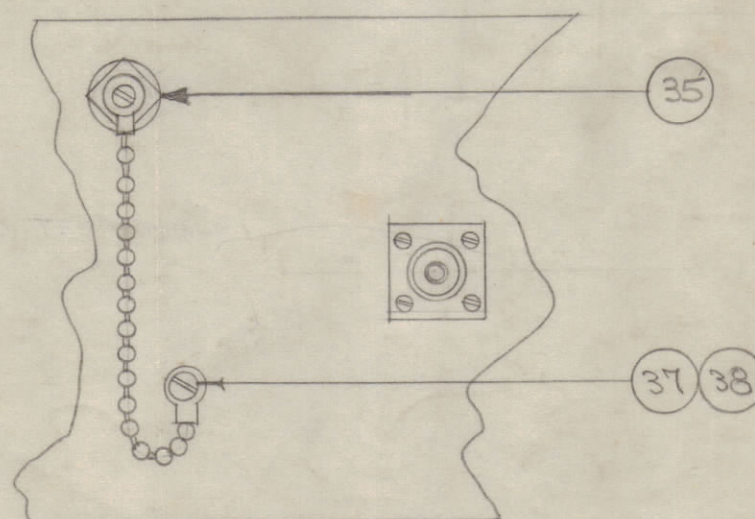


1	37	LWE06MRC	WASHER, LOCK
1	36	SCBS0632BC3	SCREW, MACHINE
1	35	A-1291	DRAIN PLUG ASSY.
1	34	MS-933	HOLDER, DESSICANT
2	33	AD-101-1/6	DESSICANT
1	32	PX-115	GUARD
2	31	FW25LBC	WASHER, FLAT
X	30	GL-101-2	CEMENT, PLIOBOND
X	29	BS-100	SOLDER, SOFT
4	28	SC-102-1	SCREW, THREAD CUTTING
1	27	MX-564/U	CLAMP, ARMOR
1	26	LD-101	SCHEMATIC DIAGRAM
1	25	UG-21B/U	PLUG
11"	24	WL-100-4	WIRE, BUSS BAR
1	23	PM-105	COVER
1	22	GA-103	GASKET, COVER



NOTE:

- ITEM 14 HAS 1/4" I.D. LOOP ON ONE END AND 1/8" I.D. LOOP ON OTHER END.
- ITEM 24 HAS 1/8" I.D. LOOP ON ONE END.
- ITEM 25 IS SUPPLIED AS A LOOSE ITEM.
- ITEM 27 IS SUPPLIED AS A LOOSE ITEM.



A-106 E

1	21	A-110	TRANS. & RELAY SUB ASSY.
4	20	SCHH2520SS28	BOLT, HEX
4	19	PM-100	PIN, COVER BOLT
4	18	LWE08MRC	LOCK WASHER, EXT.
4	17	SCBS0832BC6	SCREW, MACHINE
2	16	MTC 2520BCL	NUT, CAP
17"	15	PX-100-1-.066	INSULATION, SLEEVING
12"	14	WL-100-4	WIRE, BUSS BAR
2	13	GA-101	GASKET
2	12	GA-100	GASKET
2	11	GA-104	GASKET
16	10	FW25MSC	WASHER, FLAT
12	9	NTH2520BNA	NUT, HEX.
2	8	A-100	STUD, SUB ASSEMBLY
2	7	NS-101	INSULATOR, INSIDE
2	6	NS-100	INSULATOR, OUTSIDE
4	5	LWE04MRC	LOCK WASHER, EXT.
4	4	SCBS04A08N6	SCREW, MACHINE
1	3	UG-58A/U	RECEPTACLE
1	2	GA-106	GASKET
1	1	PM-109	CASE

REQ. ITEM	PART NO.	DESCRIPTION	SYMBOL
THE TECHNICAL MATERIEL CORP. MAMARONECK, NEW YORK			
CASE AND COVER ASSEMBLY			
STOCK SIZE		C.D.D. 3-26-53	
MATERIAL		DRAWN	
TYPE & TEMPER		ELEC. DES. APP.	
HEAT TREAT. SPEC.		MECH. DES. APP.	
FINISH & SPEC. NO.		CHECKED	
		FINAL APPROVAL	

E	1	ITEM (20) WAS SC-120	2-11-63	82175			
ISSUE	ITEM	CHANGED FROM	DATE	CN. NO.	DRAFTS	CHECKER	ENG. APP.
TOLERANCES		SCALE:					
ALL OTHERS	DEC. DIM. ±	DRILL, PUNCH, COMMERCIAL STOCK SIZES AND MANUFACTURERS TOLERANCES ARE NOT INCLUDED.					
	FRAC. DIM. ±						
	ANGULAR DIM. ±						

BAC-1-S-20	108		7-17-52
MODEL	PROJECT NO.	ASSY. NO.	DATE
USED ON			