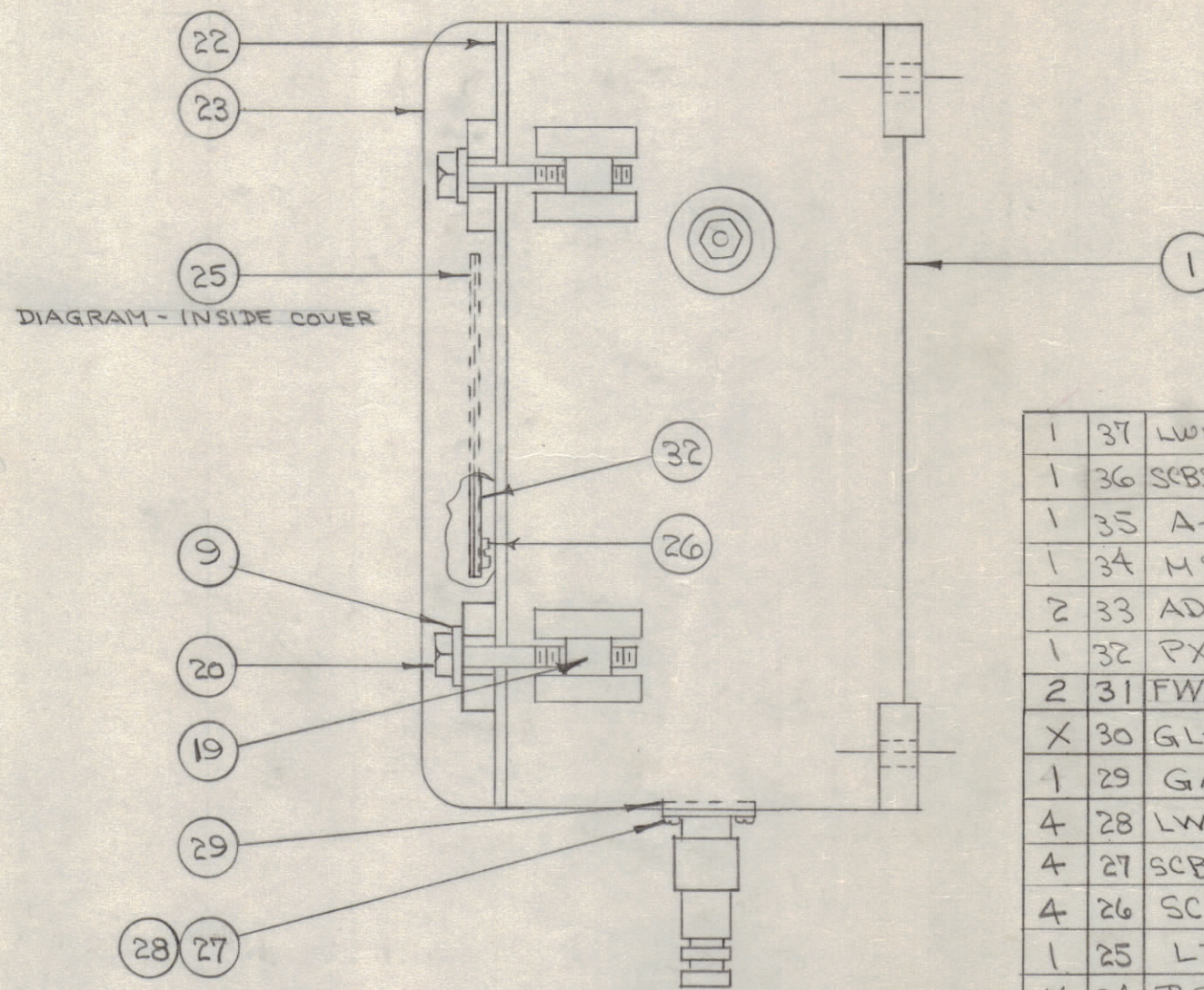
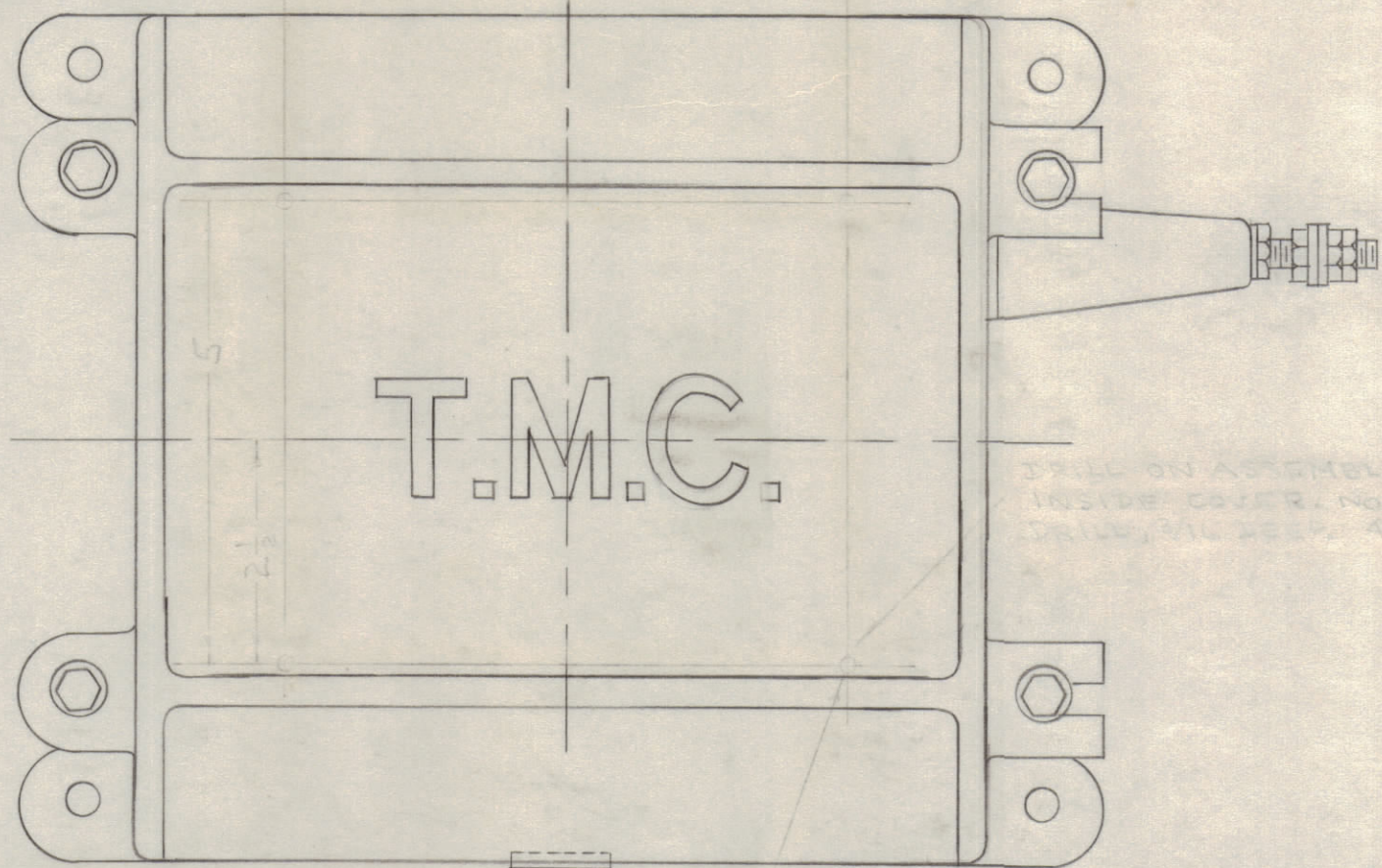


IF IT IS FOUND DESIRABLE TO CHANGE ANY TOLERANCE OR OTHER DETAIL SPECIFIED ON THIS DRAWING NOTIFY THE PURCHASER PROMPTLY.

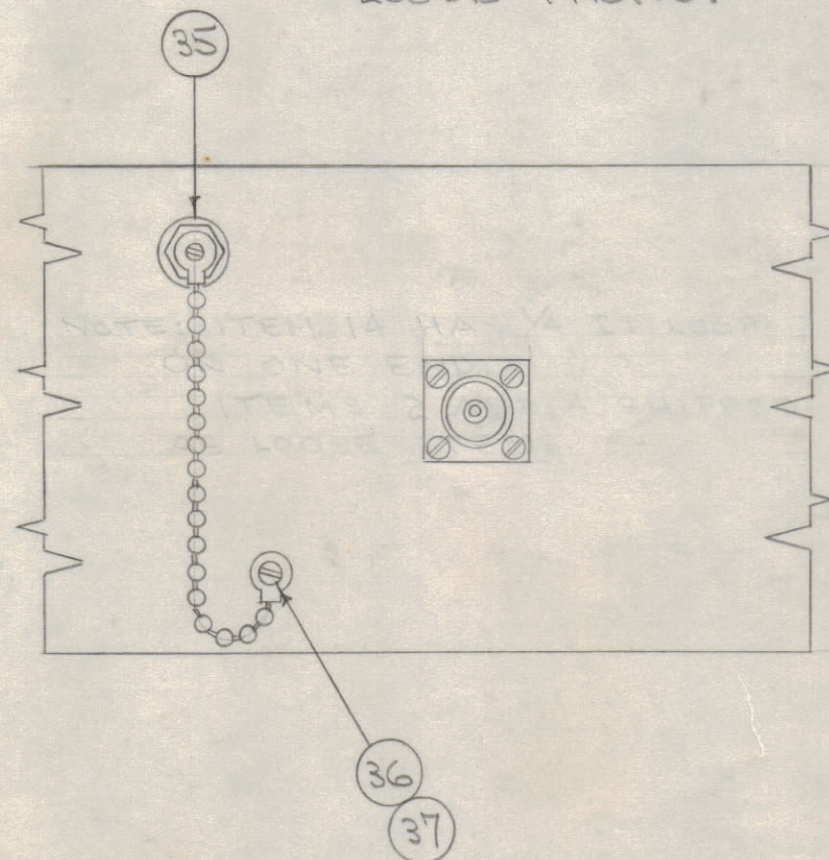
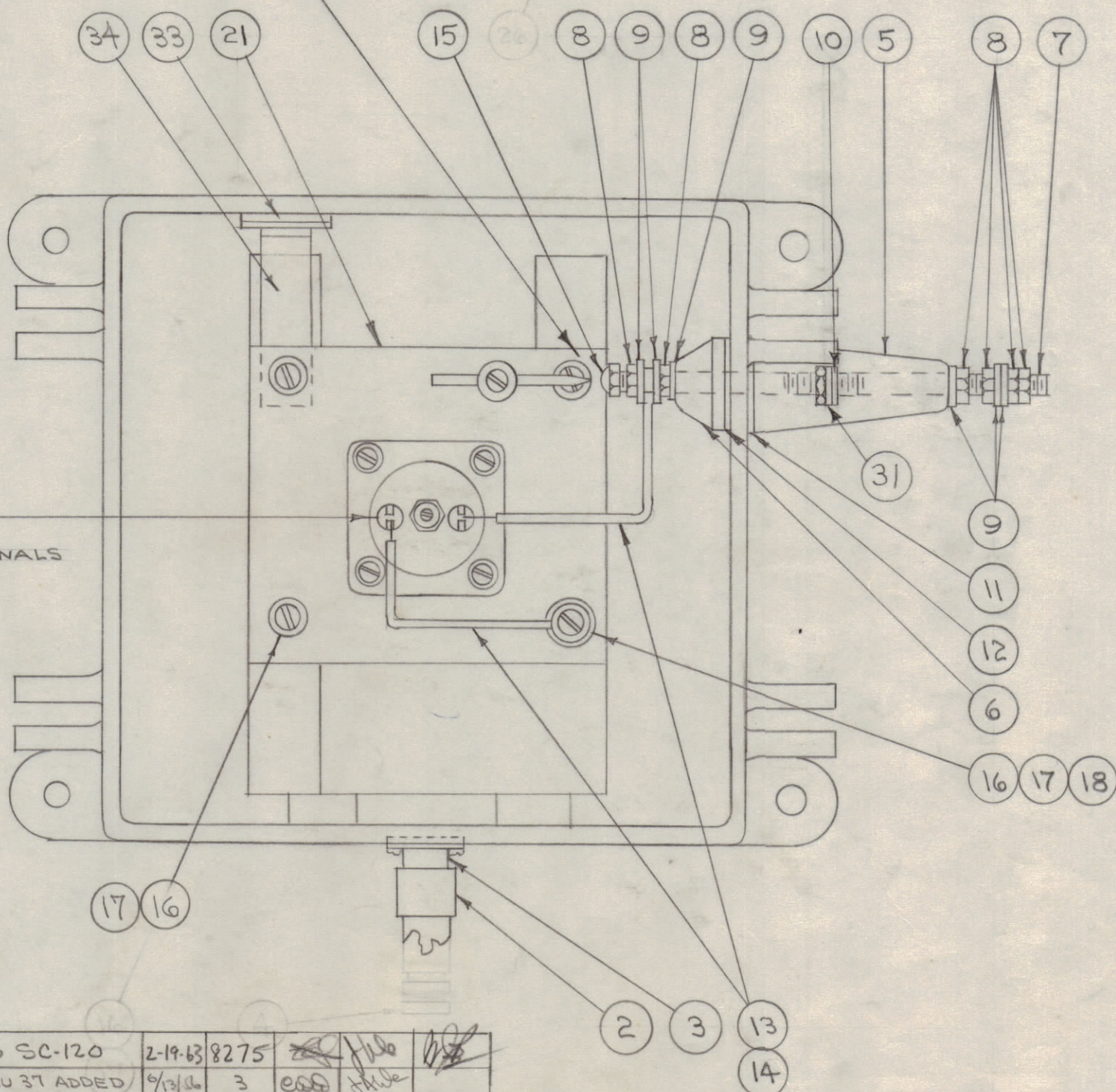
MAXIMUM ALLOWABLE TOLERANCES HAVE BEEN DETERMINED AND DEVIATIONS WILL BE CAUSE FOR REJECTION. REMOVE ALL BURRS AND SHARP EDGES

NOTE: CEMENT ITEM 22 TO ITEM 23 WITH ITEM 30



ADJUST SPARK GAP TO 1/16 SPACING

NOTE - ITEM 13 HAS 1/4 ID LOOP ON ONE END. ITEMS 2 & 4 SHIPPED AS LOOSE ITEMS.



1	37	LWE06MRC	WASHER, LOCK
1	36	SCBS0632BC3	SCREW, MACHINE
1	35	A-1291	DRAIN PLUG ASSY.
1	34	MS-933	HOLDER, DESSICANT
2	33	AD-101-1/6	DESSICANT
1	32	PX-115	GUARD.
2	31	FW25LBC	WASHER, FLAT
X	30	GL-101-2	.CEMENT, PLIO BOND
1	29	GA-106	GASKET
4	28	LWE04MRC	LOCK WASHER, EXT.
4	27	SCBS0408N6	SCREW, MACHINE
4	26	SC-102-1	SCREW, THREAD CUTTING
1	25	LD-104	SCHEMATIC DIAGRAM
X	24	BS-100	SOLDER, SOFT
1	23	PM-105	COVER
1	22	GA-103	GASKET, COVER

A-109 D

1	21	A-117	RESISTOR, SUB ASSY.
4	20	SCHH25203528	BOLT, HEX
4	19	PM-100	PIN, COVER BOLT
1	18	FW08MBC	WASHER, FLAT
4	17	LWE08MRC	LOCK WASHER, EXT.
4	16	SCBS0832BC6	SCREW, MACHINE
1	15	NTC2520BCL	NUT, CAP
8"	14	PX-100-1-066	INSULATION, SLEEVING
12"	13	WL-100-4	WIRE, BUSS BAR
1	12	GA-101	GASKET
1	11	GA-100	GASKET
1	10	GA-104	GASKET
10	9	FW25MSC	WASHER, FLAT
6	8	NTH25208N14	NUT, HEX
1	7	A-100	STUD, SUB ASSY.
1	6	NS-101	INSULATOR, INSIDE
1	5	NS-100	INSULATOR, OUTSIDE
1	4	MX-564/U	CLAMP, ARMOR
1	3	UG-58A/U	RECEPTACLE
1	2	UG-21B/U	PLUG Loose Item
1	1	PM-112	CASE

D	1	ITEM (20) WAS SC-120	2-19-53	8275				
C	1	ITEMS 32 THRU 37 ADDED	9/2/56	3	ESD			
B	2	#31 WAS ADDED	8-24-52	2	F.M.	C.S.D.		
A	1	REDRAWN	4/6/53	1	COO			
		ITEM 30 ADDED						

ISSUE	ITEM	CHANGED FROM	DATE	CN. NO.	DRAFTS	CHECKER	ENG. APP.
TOLERANCES		SCALE:					
ALL OTHERS	DEC. DIM. ±	DRILL, PUNCH, COMMERCIAL STOCK					
	FRAC. DIM. ±	SIZES AND MANUFACTURERS					
	ANGULAR DIM. ±	TOLERANCES ARE NOT INCLUDED.					

BAC-4-S-20	108		7-22-52
MODEL	PROJECT NO.	ASS'Y. NO.	DATE
USED ON			

REQ. ITEM	PART NO.	DESCRIPTION	SYMBOL
THE TECHNICAL MATERIEL CORP.			
MAMARONECK. NEW YORK			
CASE AND COVER			
ASSEMBLY			
STOCK SIZE		COND 4-6-53	
MATERIAL		DRAWN	
WEIGHT PER PC.		ELEC. DES. APP.	
TYPE & TEMPER		MECH. DES. APP.	
HEAT TREAT. SPEC.		CHECKED	
FINISH & SPEC. NO.		FINAL APPROVAL	
		A-109 D	