

IF IT IS FOUND DESIRABLE TO CHANGE ANY TOLERANCE OR OTHER DETAIL SPECIFIED ON THIS DRAWING NOTIFY THE PURCHASER PROMPTLY.

MAXIMUM ALLOWABLE TOLERANCES HAVE BEEN DETERMINED AND DEVIATIONS WILL BE CAUSE FOR REJECTION. REMOVE ALL BURRS AND SHARP EDGES

RELEASED

NOTICE TO PERSONS RECEIVING THIS DRAWING

THE TECHNICAL MATERIEL CORPORATION claims proprietary right in the material disclosed hereon. This drawing is issued in confidence for engineering information only and may not be reproduced or used to manufacture anything shown hereon without permission from THE TECHNICAL MATERIEL CORPORATION to the user. This drawing is loaned for mutual assistance and is subject to recall at any time.

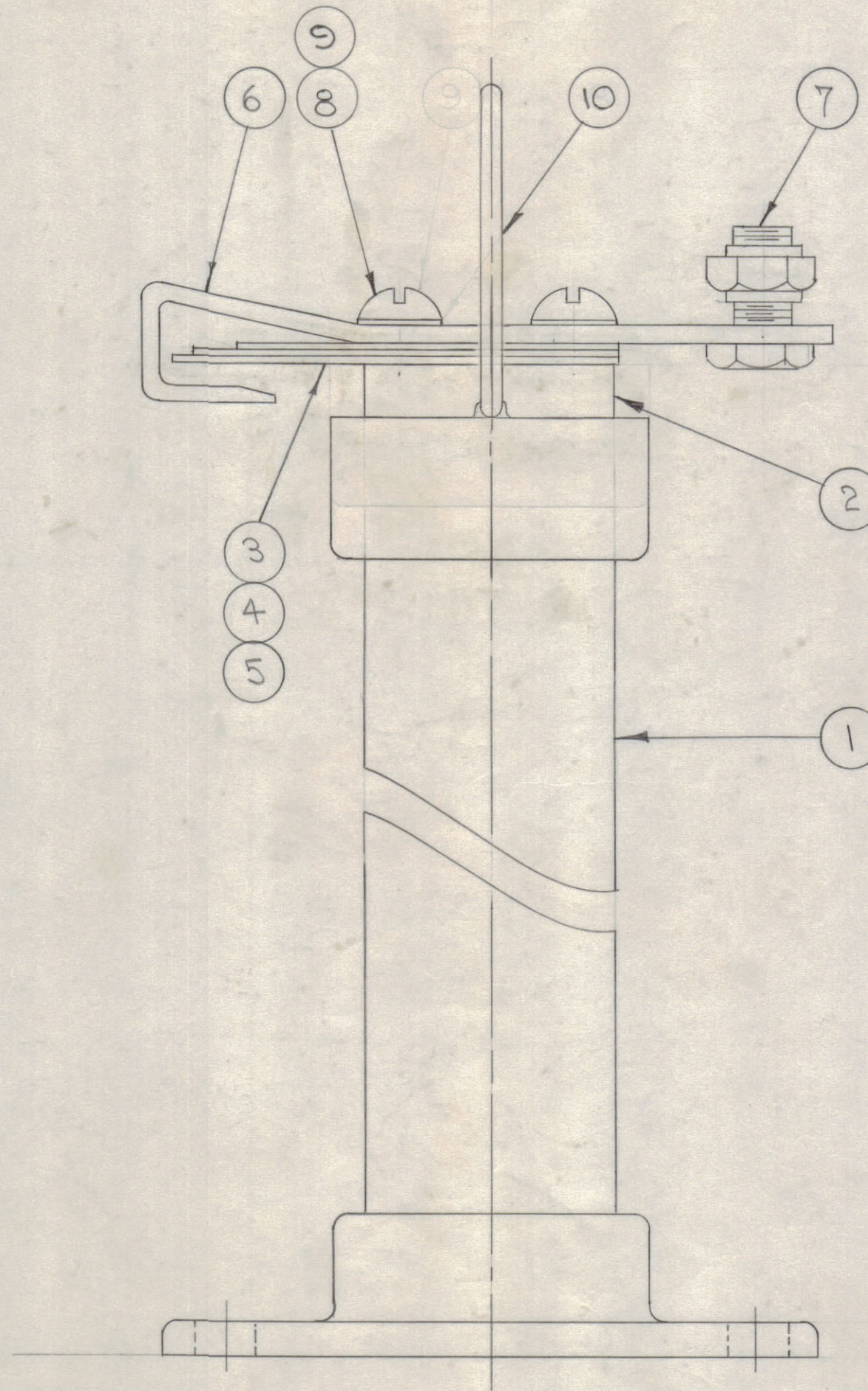
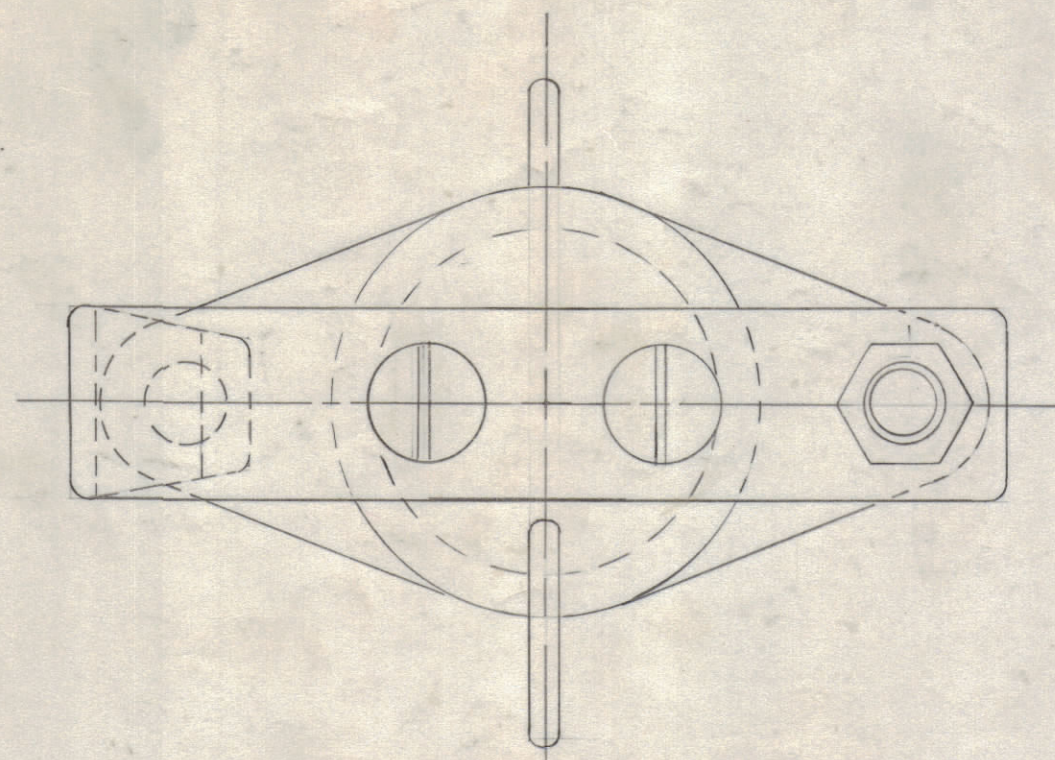
Property of:

THE TECHNICAL MATERIEL CORPORATION
MAMARONECK, NEW YORK

NOTE:

A-126-1 = ITEM 10 AS SHOWN.

A-126-2 = HORN ONLY \diamond ED
180° IN HORIZONTAL PLANE



A-126-1 B

1	10	WL-101	TRANSMISSION LINE HORN	
2	9	SCRS3118BN14	SCREW, ROUND HEAD	
2	8	LWS 31MRC	WASHER, LOCK	
1	7	TE-107	SOLDERLESS CONNECTOR, NAVY TYPE	
1	6	FP-105	CONTACT ARM	
1	5	SP-101-3	SPRING CONTACT	
1	4	SP-101-2	SPRING CONTACT	
1	3	SP-101-1	SPRING CONTACT	
1	2	MP-115	INSULATOR CAP	
1	1	NS-102	INSULATOR STAND OFF	

REQ. ITEM	PART NO.	DESCRIPTION	SYMBOL
//		THE TECHNICAL MATERIEL CORP. MAMARONECK, NEW YORK	
//		INSULATOR ASSEMBLY	
//		MATERIAL WEIGHT PER PC.	
//		TYPE & TEMPER	
//		HEAT TREAT. SPEC.	
//		FINISH & SPEC. NO.	

B	3	WAS SCRS3118 BC20	12/12/52	2	LAD	RFB	
A	2	WAS SCRS3118 BC16	10/8/52	1	LG	RFB	
A	1	NOTE CHANGED	10/8/52	1	LG	RFB	
ISSUE	ITEM	CHANGED FROM	DATE	CN. NO.	DRAFTS	CHECKER	ENG. APP.
TOLERANCES			SCALE: FULL SIZE				
ALL OTHERS	DEC. DIM. \pm FRAC. DIM. \pm ANGULAR DIM. \pm		DRILL, PUNCH, COMMERCIAL STOCK SIZES AND MANUFACTURERS TOLERANCES ARE NOT INCLUDED.				

MODEL	PROJECT NO.	ASS'Y. NO.	DATE
	141	A-127	8-22-52
USED ON			

A-126-1 B