

IF IT IS FOUND DESIRABLE TO CHANGE ANY TOLERANCE OR OTHER DETAIL SPECIFIED ON THIS DRAWING NOTIFY THE PURCHASER PROMPTLY.

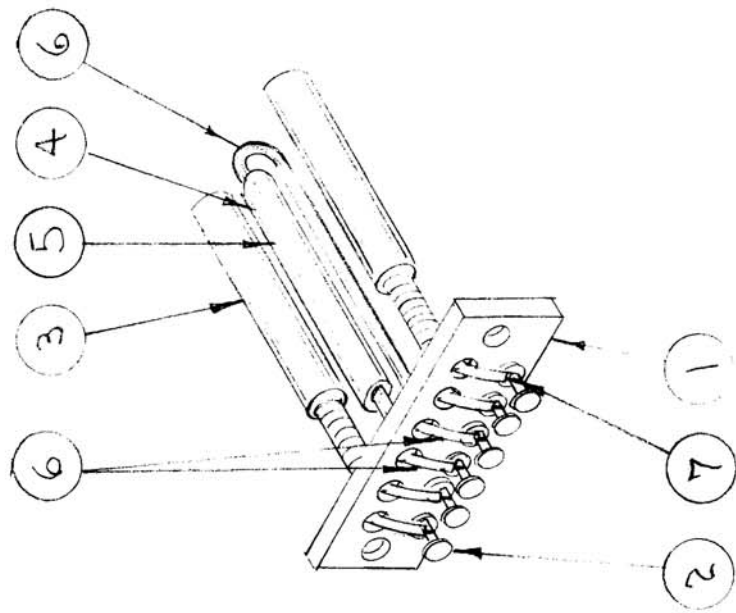
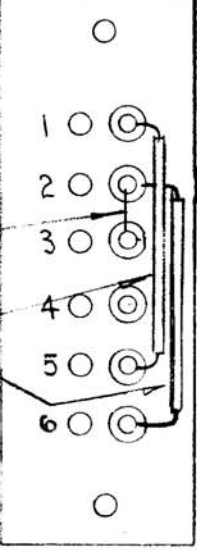
MAXIMUM ALLOWABLE TOLERANCES HAVE BEEN DETERMINED AND DEVIATIONS WILL BE CAUSE FOR REJECTION. REMOVE ALL BURRS AND SHARP EDGES

RELEASED

A-146

C

USED ON	
MODEL	PROJECT NO.
XFK	109
LFA	
ASSY. NO.	DATE
A-600 A-627	11-1-53
A-147	10-23-52



REF: LD132

3"	9	PX-16A-5-024	INSULATION, SLEEVING	BROWN
4"	8	WL-100-1	WIRE, BUSS BAR	
X	7	BS-100	SOLDER, SOFT	
6"	6	MWC-22(7)B9	CABLE, INSULATED - GLASS BR.	WHITE
3"	5	PX-10A-5-375	INSULATION, SLEEVING	
1	4	SS-100-2	SWITCH, SENSITIVE.	
2	3	RR-102-1	ELEMENT, XTAL OVEN	
6	2	TE-105-4	TERMINAL LUG.	
1	1	PX-108	BOARD, TERMINAL - ELEMENT	

REQ. ITEM	PART NO.	DESCRIPTION	SYMBOL
		THE TECHNICAL MATERIEL CORP. MAMARONECK, NEW YORK	
STOCK SIZE		BOARD, TERMINAL - ELEMENT HEATER	
MATERIAL		SUB ASSEMBLY	
WEIGHT PER PC.			
TYPE & TEMPER			
HEAT TREAT. SPEC.			
FINISH & SPEC. NO.			
DRAWN		ELEC. DES. APP.	MECH. DES. APP.
CHECKED			
FINAL APPROVAL			

ISSUE ITEM	CHANGED FROM	DATE	CN. NO.	DRAFTS	CHECKER	ENG. APP.
C	LD132 ADDED	10-18-54	17064	UAW		
B	JUMPER 6-2 WAS 6-3	6-17-65	14280	D.V.V.		
A	Item (6) Was SR13/5(T)22U99	12-26-61	6097	E.J.		
TOLERANCES						
SCALE						
DEC. DIM. ±						
FRAC. DIM. ±						
ANGULAR DIM. ±						
DRILL, PUNCH, COMMERCIAL STOCK SIZES AND MANUFACTURERS TOLERANCES ARE NOT INCLUDED.						