

IF IT IS FOUND DESIRABLE TO CHANGE ANY TOLERANCE OR OTHER DETAIL SPECIFIED ON THIS DRAWING NOTIFY THE PURCHASER PROMPTLY.

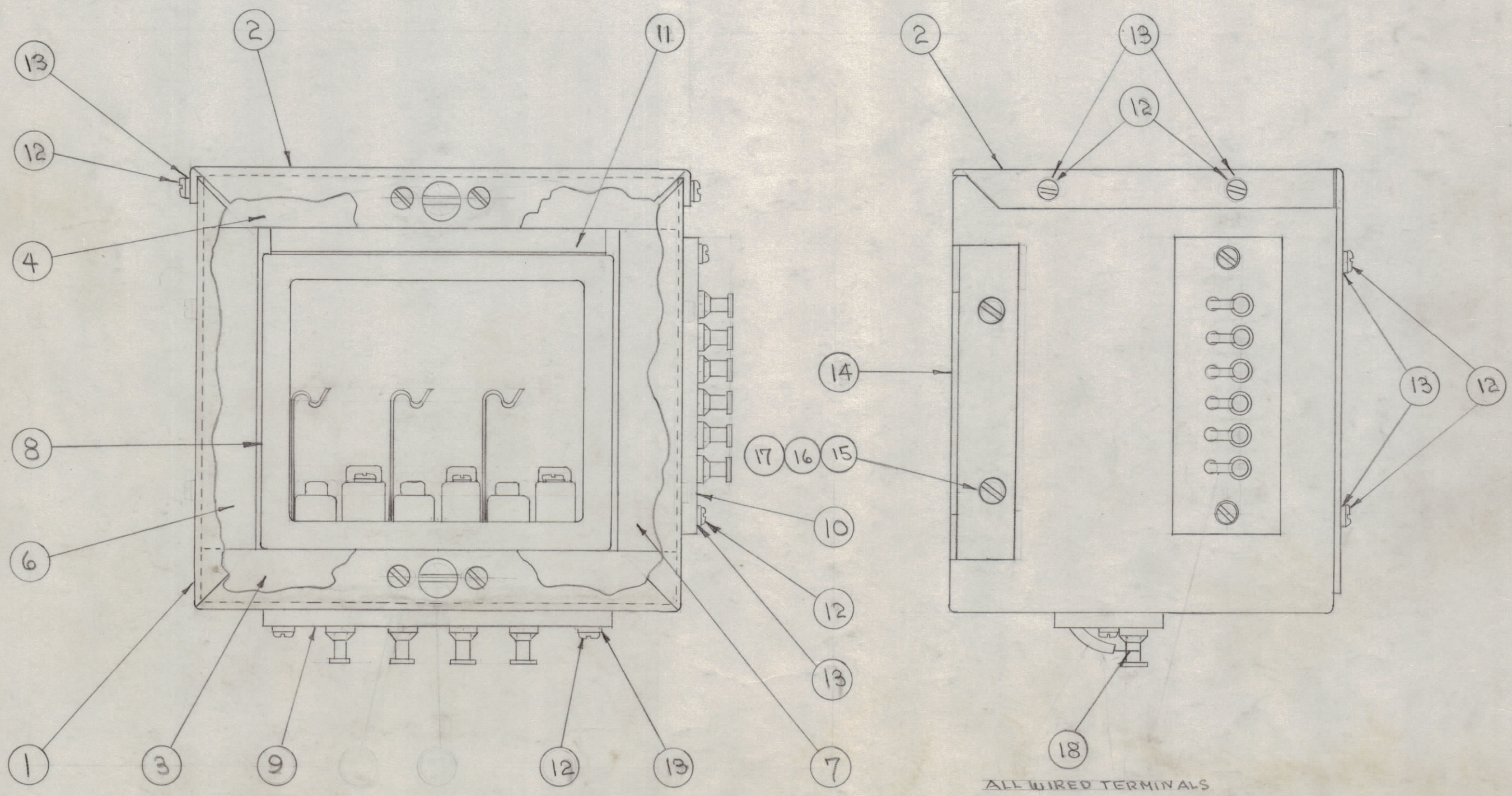
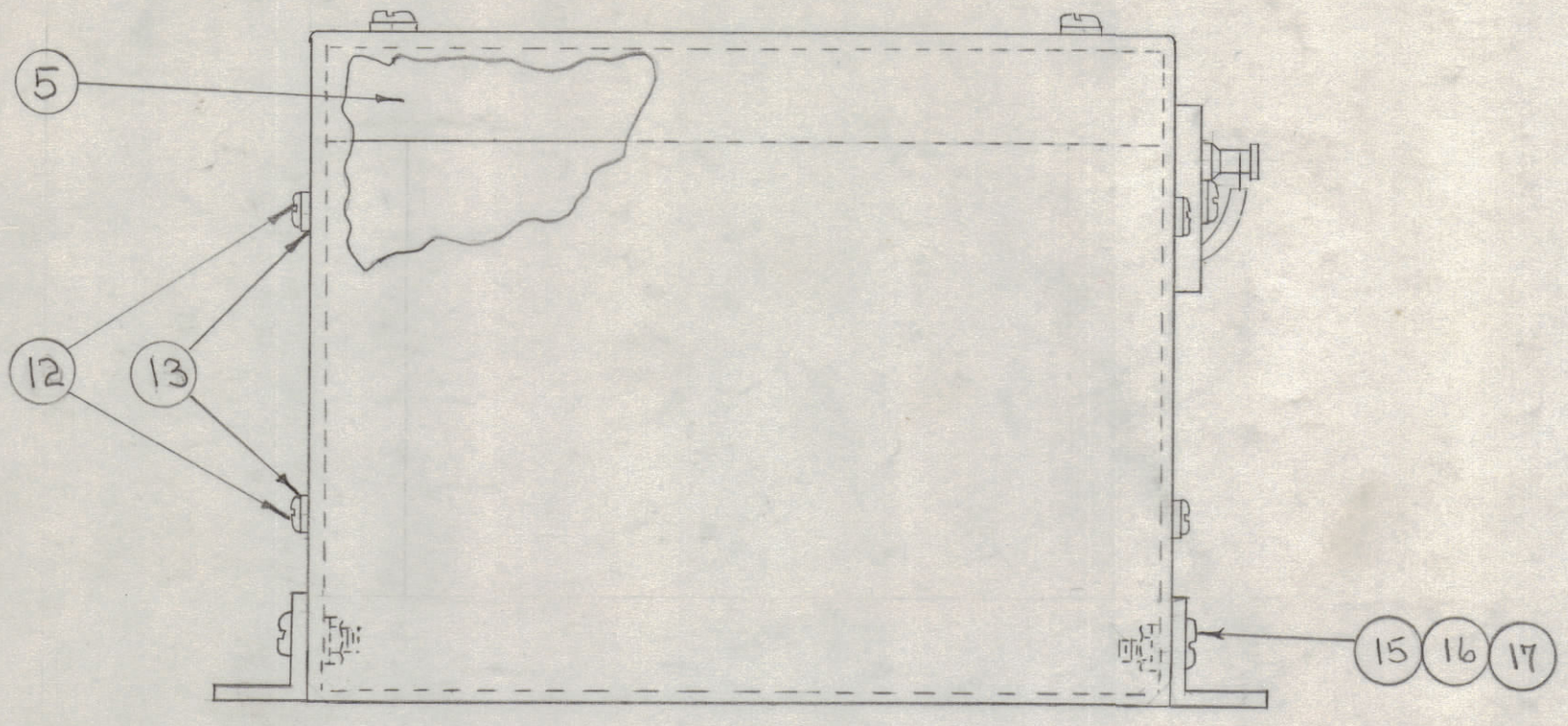
MAXIMUM ALLOWABLE TOLERANCES HAVE BEEN DETERMINED AND DEVIATIONS WILL BE CAUSE FOR REJECTION. REMOVE ALL BURRS AND SHARP EDGES

RELEASED

NOTICE TO PERSONS RECEIVING THIS DRAWING

THE TECHNICAL MATERIEL CORPORATION claims proprietary right in the material disclosed hereon. This drawing is issued in confidence for engineering information only and may not be reproduced or used to manufacture anything shown hereon without permission from THE TECHNICAL MATERIEL CORPORATION to the user. This drawing is loaned for mutual assistance and is subject to recall at any time.

Property of:
THE TECHNICAL MATERIEL CORPORATION
MAMARONECK, NEW YORK



ALL WIRED TERMINALS

A-147 \emptyset

X	18	BS-100	SOLDER, SOFT
4	17	NTH0632BC8	NUT, HEXAGONAL
4	16	LWS06MRC	WASHER, LOCK.
4	15	SCBS0632BN6	SCREW, MACHINE.
2	14	MS-136	BRACKET, XTAL OVEN
12	13	LWS04MRC	LOCKWASHER, SPLIT
12	12	SCBS0440BN4	SCREW, MACHINE
1	11	IM-106	TOP SHIM, XTAL OVEN
1	10	A-146	BOARD, TERMINAL ELEMENT (Sub Assy)
1	9	A-144	BOARD, TERM., SUB ASSY.
1	8	A-143	XTAL OVEN CORE, SUB ASSY.
1	7	IM-104	INSULATION, RIGHT SIDE
1	6	IM-103	INSULATION, LEFT SIDE
1	5	IM-105	INSULATION, XTAL OVEN REAR
1	4	IM-102	INSULATION, XTAL OVEN TOP
1	3	IM-101	INSULATION, XTAL OVEN BOTTOM
1	2	A-195	COVER, XTAL OVEN
1	1	A-196	SHELL, XTAL OVEN SUB ASSY.

REQ. ITEM	PART NO.	DESCRIPTION	SYMBOL
THE TECHNICAL MATERIEL CORP. MAMARONECK, NEW YORK			
CRYSTAL OVEN ASSEMBLY			
STOCK SIZE		C.O.D. 9-17-52	
MATERIAL		DRAWN	
WEIGHT PER PC.		ELEC. DES. APP. <i>ppb</i>	
TYPE & TEMPER		MECH. DES. APP.	
HEAT TREAT. SPEC.		CHECKED	
FINISH & SPEC. NO.		FINAL APPROVAL	
		APR 1 1954	
		A-147 \emptyset	

ISSUE	ITEM	CHANGED FROM	DATE	CN. NO.	DRAFTS	CHECKER	ENG. APP.
\emptyset		ORIGINAL RELEASE	4/1/54			GE	<i>ppb</i>
TOLERANCES				SCALE:			
ALL OTHERS	DEC. DIM. \pm	FRAC. DIM. \pm	ANGULAR DIM. \pm	DRILL, PUNCH, COMMERCIAL STOCK SIZES AND MANUFACTURERS TOLERANCES ARE NOT INCLUDED.			

LFA	109	A-183	10-21-52
MODEL	PROJECT NO.	ASS'Y. NO.	DATE
USED ON			