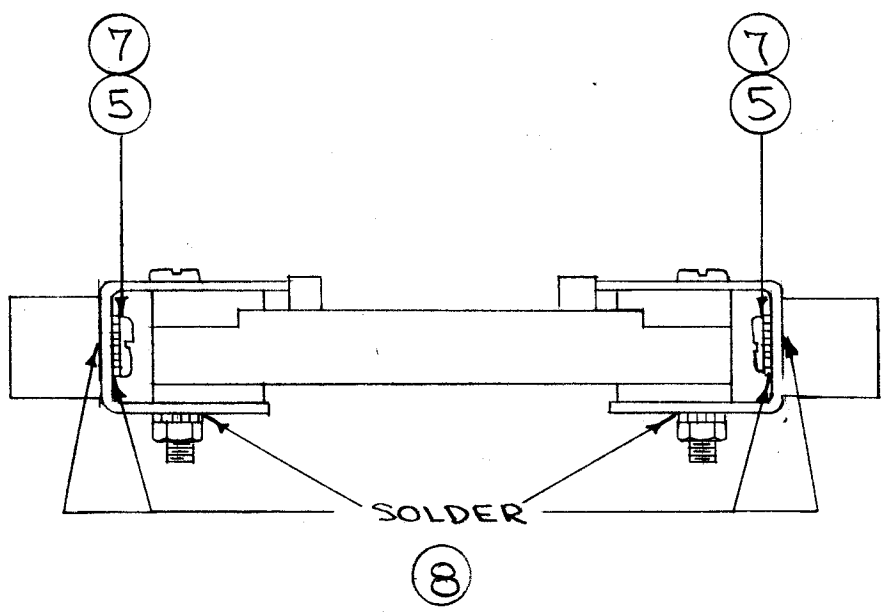
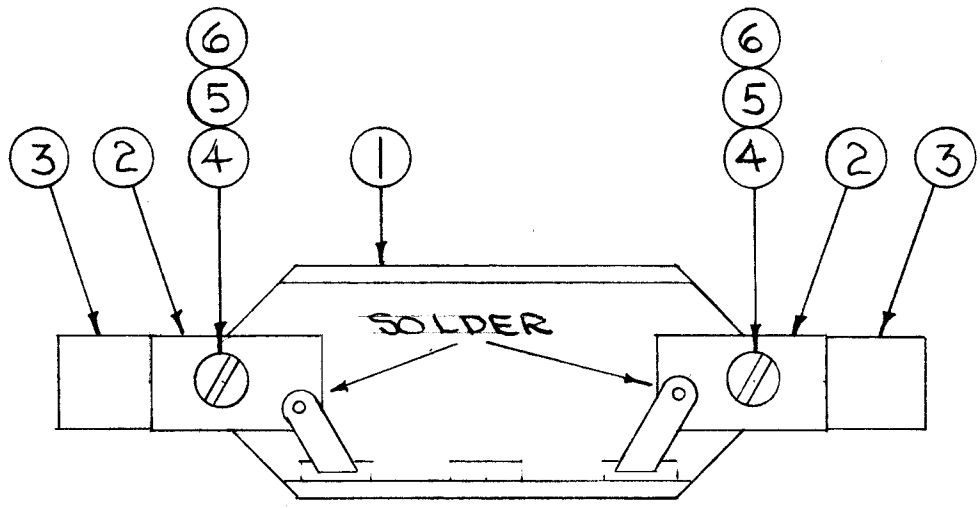


IF IT IS FOUND DESIRABLE TO CHANGE ANY TOLERANCE OR OTHER DETAIL SPECIFIED ON THIS DRAWING NOTIFY THE PURCHASER PROMPTLY.

MAXIMUM ALLOWABLE TOLERANCES HAVE BEEN DETERMINED AND DEVIATIONS WILL BE CAUSE FOR REJECTION. REMOVE ALL BURRS AND SHARP EDGES

A-169 A



REQ.	ITEM	PART NO.	DESCRIPTION	SYMBOL
X	8	BS-100	SOLDER, SOFT	
2	7	SCBS0832BC6	SCREW, MACHINE	
2	6	NTH0832BC10	NUT, HEX	
4	5	LWE08MRC	WASHER, LOCK	
2	4	SCBS0832BC12	SCREW, MACHINE	
2	3	PM-306	CONTACT	
2	2	MS-147	FERRULE, MOUNTING	
1	1	RW-112	RESISTOR, FIXED 140Ω	

#		THE TECHNICAL MATERIEL CORP.	
STOCK SIZE		MAMARONECK. NEW YORK	
#	#	RESISTOR ASSEMBLY	
MATERIAL		RTB	
WEIGHT PER PC.		C.D.D. 7-29-54	
TYPE & TEMPER		OMP	WJ
HEAT TREAT. SPEC.		OMP	
FINISH & SPEC. NO.		CHECKED	FINAL APPROVAL

A	1	REDRAWN w/CHANGES	7/29/54	1	C.D.D.	J.M.D.	OMP
ISSUE	ITEM	CHANGED FROM	DATE	CN. NO.	DRAFTS	CHECKER	ENG. APP.
TOLERANCES			SCALE:				
ALL OTHERS	DEC. DIM. ±	FRAC. DIM. ±	DRILL, PUNCH, COMMERCIAL STOCK SIZES AND MANUFACTURERS TOLERANCES ARE NOT INCLUDED.				

6	RTB	158	A-172	7-29-54
MODEL	PROJECT NO.	ASS'Y. NO.	DATE	
USED ON				

A-169 A