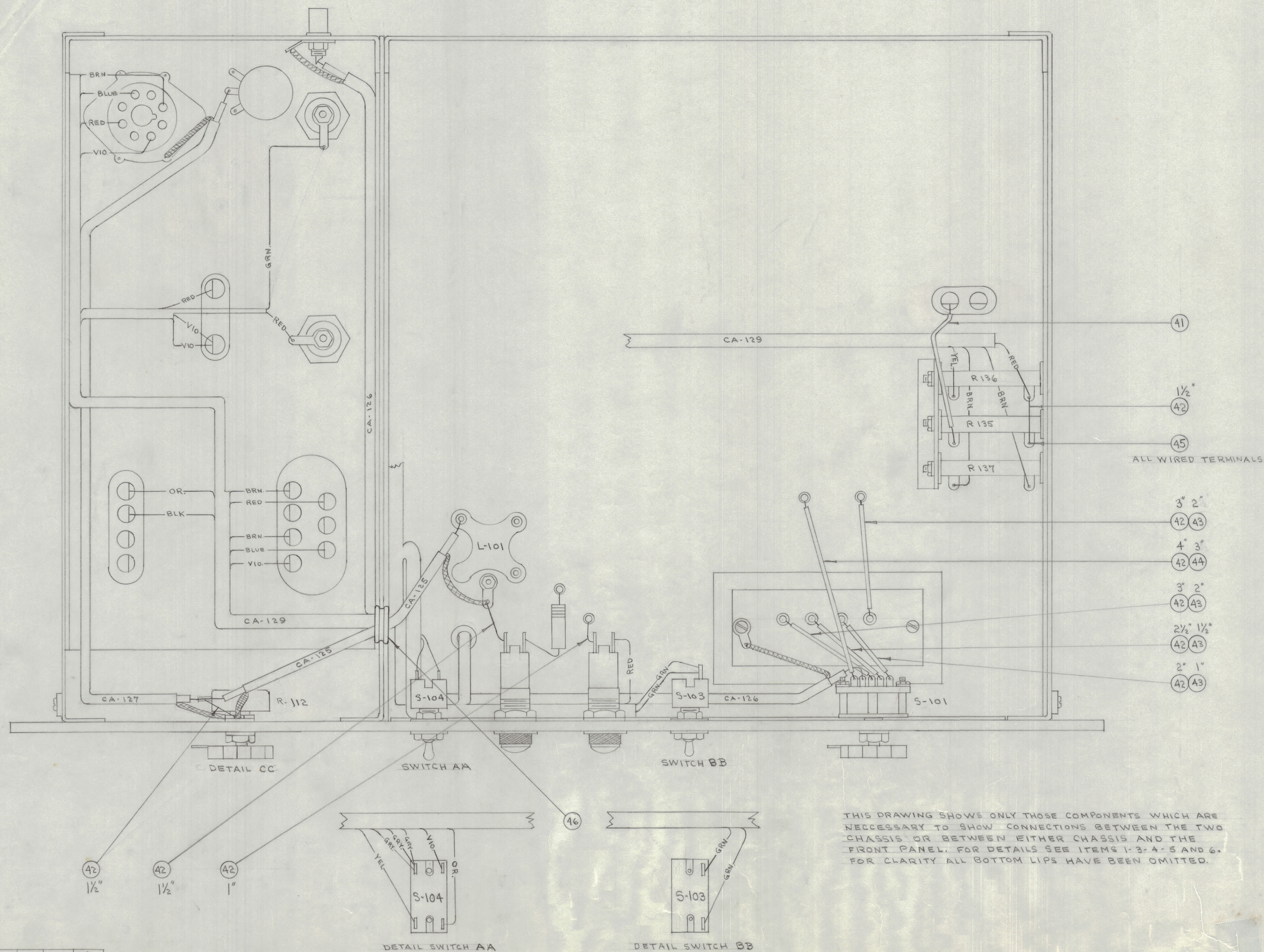


IF IT IS FOUND DESIRABLE TO CHANGE ANY TOLERANCE OR OTHER DETAIL SPECIFIED ON THIS DRAWING NOTIFY THE PURCHASER PROMPTLY.  
 MAXIMUM ALLOWABLE TOLERANCES HAVE BEEN DETERMINED AND DEVIATIONS WILL BE CAUSE FOR REJECTION. REMOVE ALL BURRS AND SHARP EDGES

RELEASED



WIRE NO.	COLOR	FROM		TO	
		COMPONENT	PIN OR TERM.	COMPONENT	PIN OR TERM.
1	BROWN	STAND OFF		XV 102	3
2	ORANGE	STAND OFF		E 102	2
3	RED	I 101		F 101	
4	GREEN	L 107		C 126	
5	RED	L 107		L 106 C 125	
6	BROWN	R 137		T 101	8
7	ORANGE	T 101	1	F 102	
8	BLUE	XV 107	6	T 101	7
9	BROWN	XV 107	8	T 101	10
10	RED	XV 107	4	T 101	5
11	VIOLET	XV 107	2	L 106	
12	VIOLET	L 106		T 101	11
13	RED	C 127		STAND OFF	
14	WHITE	STAND OFF		M 101	
15	GREEN	L 107		S 103	
16	GREEN	STAND OFF		STAND OFF	
17	GREEN	STAND OFF		S 103	
18	GREY	S 104		T 101	3
19	RED	STAND OFF		S 104	
20	YELLOW	R 136		XV 108	1
21	GREEN	XV 106	6	STAND OFF	
22	BROWN	R 137		XV 101	4
23	BROWN	XV 101	4	XV 106	3
24	BROWN	XV 106	3	XV 105	3
25	BROWN	XV 105	3	XV 104	9
26	YELLOW	XV 105	2	XV 106	2
27	ORANGE	S 104		J 104	
28	YELLOW	S 104		J 104	
29	BROWN	XV 102	3	XV 103	3
30	GREY	S 104		STAND OFF	
31	VIOLET	F 102		F 101	

A-183 A

32	GREY	S 104		E 102	4
33	VIOLET	S 104		F 102	
34	RED	F 101		E 102	5

NOTICE TO PERSONS RECEIVING THIS DRAWING

THE TECHNICAL MATERIEL CORPORATION claims proprietary right in the material disclosed herein. This drawing is issued in confidence for engineering information only and may not be reproduced or used to manufacture anything shown herein without permission from THE TECHNICAL MATERIEL CORPORATION to the user. This drawing is loaned for mutual assistance and is subject to recall at any time.

Property of:  
 THE TECHNICAL MATERIEL CORPORATION  
 MAMARONECK, NEW YORK

1	A6	ANS 931-3-10	GROMMET, ELASTIC	
X	A5	BS-100	SOLDER, SOFT	
3"	A4	PX-104-4-.034	INSULATION, SLEEVING (GRN.)	
6 1/2"	A3	PX-104-6-.034	INSULATION, SLEEVING (BLUE)	
20"	A2	WL-100-7	WIRE, BUSS BAR	
3"	A1	SRIR(7)20U55	CABLE, INSULATED (GRN.)	

REQ. ITEM	PART NO.	DESCRIPTION	SYMBOL
STOCK SIZE			
MATERIAL WEIGHT PER FC.			
TYPE & TEMPER			
HEAT TREAT. SPEC.			
FINISH & SPEC. NO.			

THE TECHNICAL MATERIEL CORP.  
 MAMARONECK, NEW YORK  
 MAIN ASSEMBLY  
 SHEET 2 OF 3  
 C.O.D. 10-31-52  
 DRAWN: A. J. J.  
 ELEC. DES. APP. [Signature]  
 MECH. DES. APP. [Signature]  
 M.H.S.  
 CHECKED [Signature]  
 FINAL APPROVAL [Signature]  
 A-183 A

THIS DRAWING SHOWS ONLY THOSE COMPONENTS WHICH ARE NECESSARY TO SHOW CONNECTIONS BETWEEN THE TWO CHASSIS OR BETWEEN EITHER CHASSIS AND THE FRONT PANEL. FOR DETAILS SEE ITEMS 1-3-4-5 AND 6. FOR CLARITY ALL BOTTOM LIPS HAVE BEEN OMITTED.

A	1-2	SEE SHEET 1 OF 3	12-1952	1	C.D.D.		
ISSUE	ITEM	CHANGED FROM	DATE	CN. NO.	DRAFTS	CHECKER	ENG. APP.
TOLERANCES							
SCALE: 1/8"							
DRILL, PUNCH, COMMERCIAL STOCK SIZES AND MANUFACTURERS TOLERANCES ARE NOT INCLUDED.							

LFA	109		10-31-52
MODEL	PROJECT NO.	ASSY. NO.	DATE
USED ON			