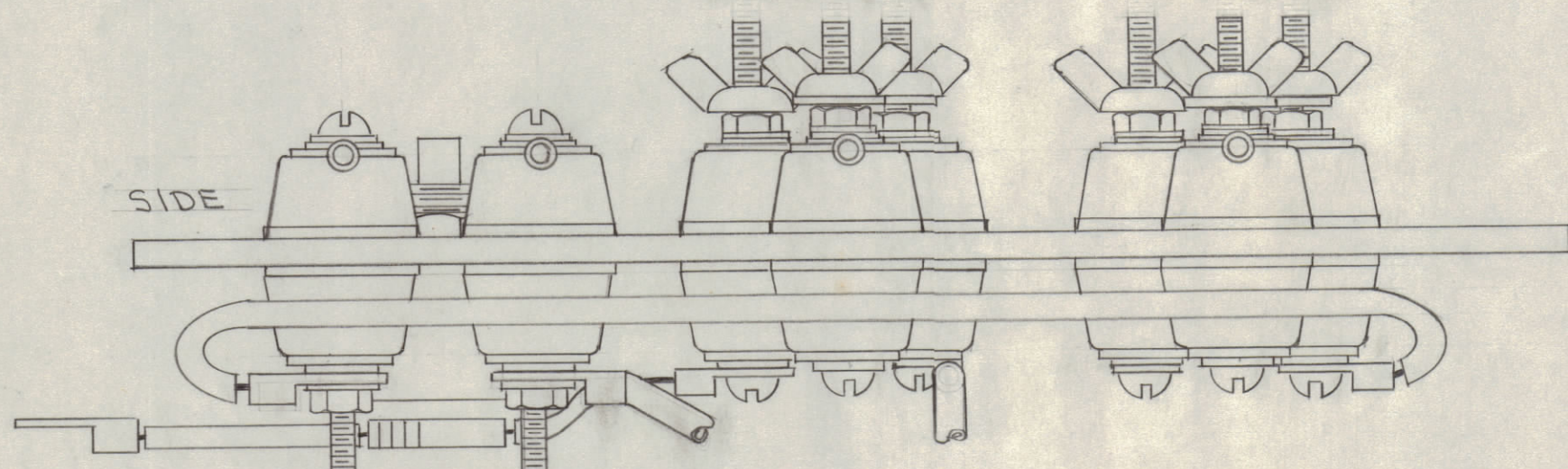
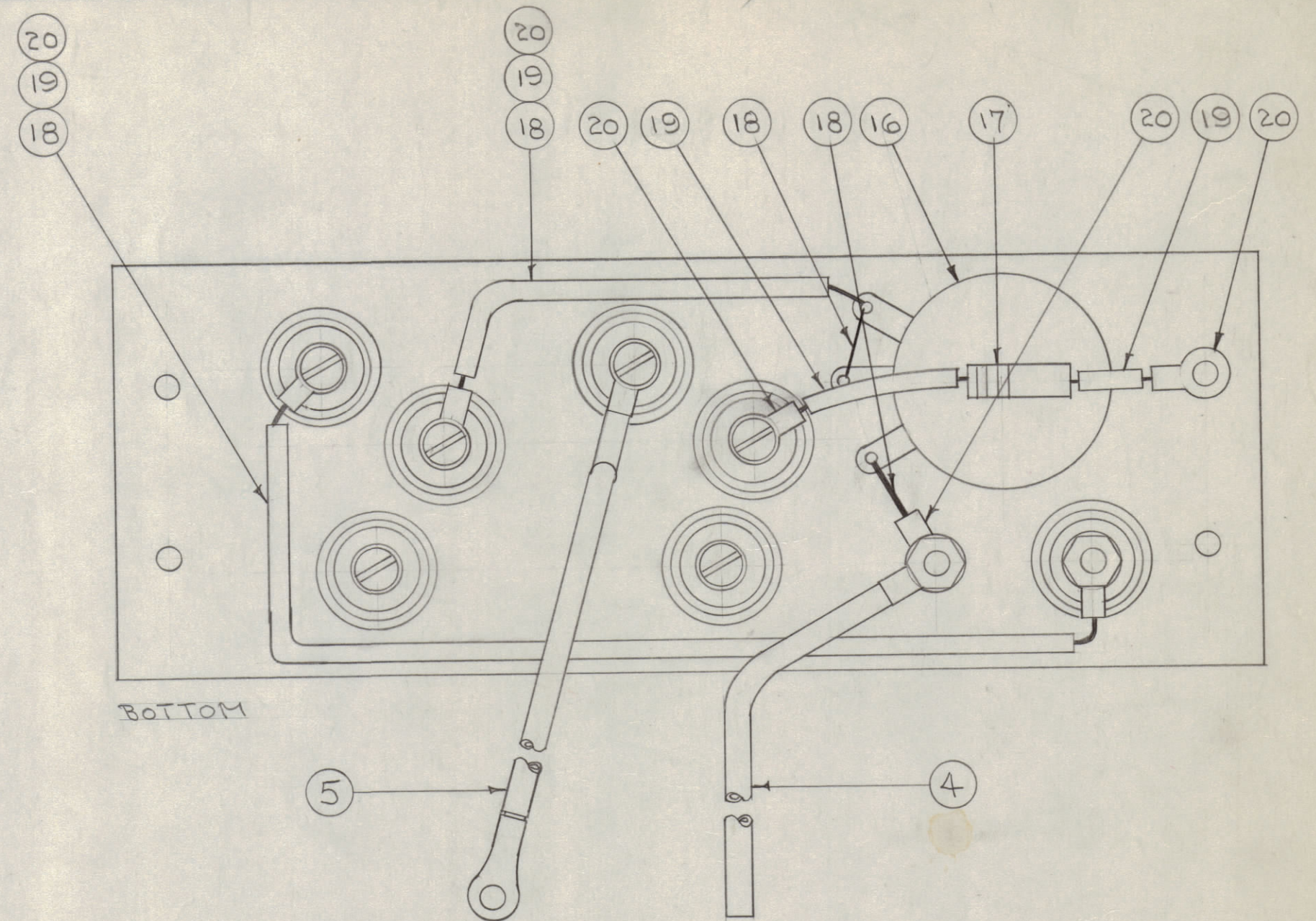
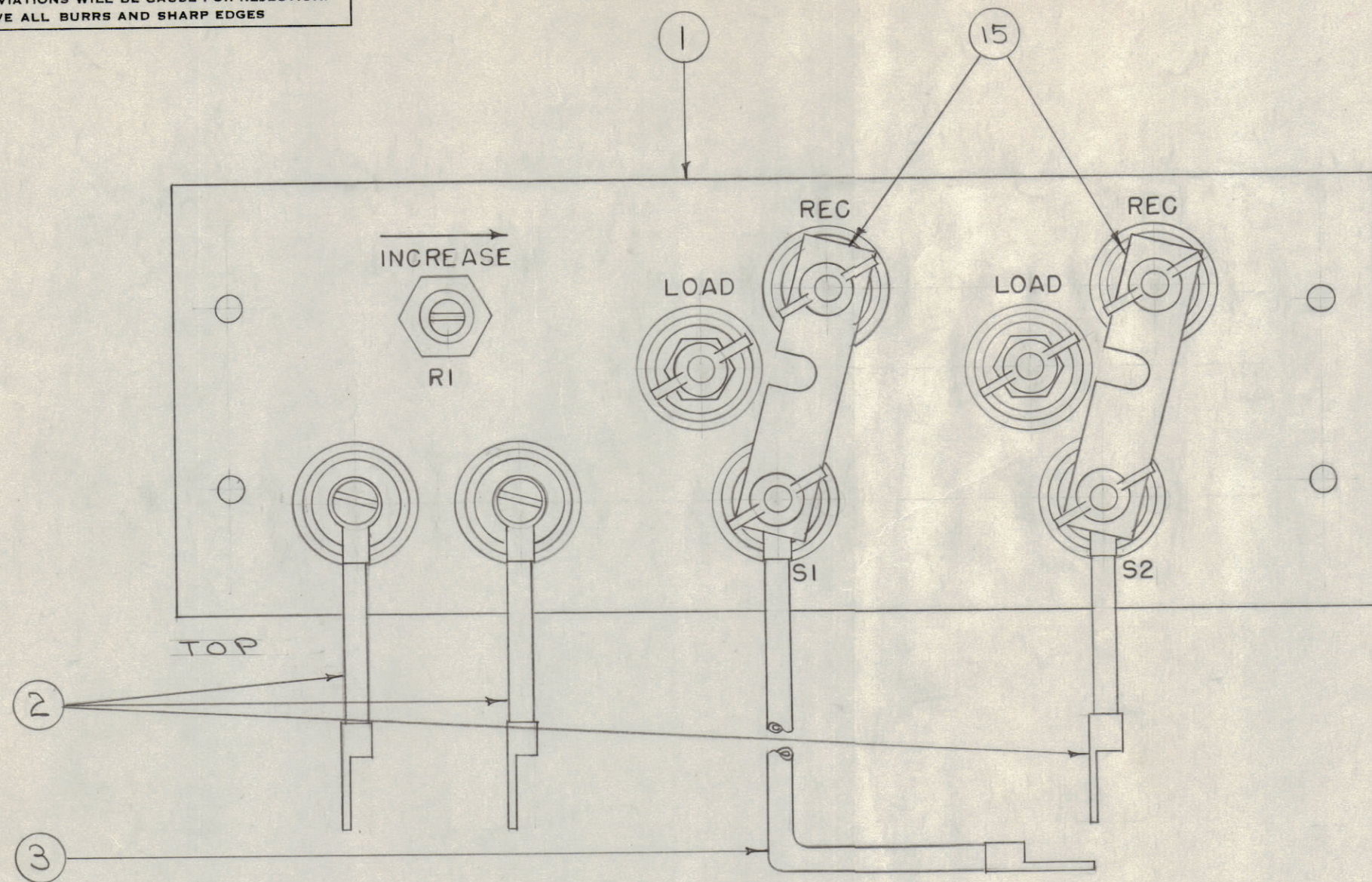


IF IT IS FOUND DESIRABLE TO CHANGE ANY TOLERANCE OR OTHER DETAIL SPECIFIED ON THIS DRAWING NOTIFY THE PURCHASER PROMPTLY.

MAXIMUM ALLOWABLE TOLERANCES HAVE BEEN DETERMINED AND DEVIATIONS WILL BE CAUSE FOR REJECTION. REMOVE ALL BURRS AND SHARP EDGES



LINK (IF USED)

LEAD (IF USED)

LEAD (IF USED)

SAMPLE BUILD UP TO SHOW PLACEMENT OF PARTS. SEE VIEWS ABOVE FOR PARTS USED.

A-192 E

X	21	BS-100	SOLDER, SOFT	
6	20	TE-141-3	TERMINAL	
X	19	PX-104-1.053	INSULATION, SLEEVING (BLK)	
X	18	WL-100-4	WIRE, BUSSBAR 16 GA.	
1	17	RC42GF750J	RESISTOR, FIXED	R2
1	16	RA107TSC501A	RESISTOR, VARIABLE	R1
2	15	MS-111	LINK	
6	14	NT-110-1032BN	NUT, WING	
8	13	NTH1032BN12	NUT, HEX	
8	12	LWE10MRN	WASHER, LOCK	
16	11	GA-118	GASKET, CORK	
8	10	NS-112-2	INSULATOR, STEATITE	
8	9	NS-112-1	" " "	
16	8	WA-109-54	WASHER, FIBER	
16	7	FW10HRN	WASHER, FLAT	
8	6	SCRPI032BN32	SCREW, MACHINE	
1	5	A-871	JUMPER NO.4 ASSY.	
1	4	A-870		3
1	3	A-869		2
3	2	A-867		1
1	1	PX-116	TERMINAL BOARD	

REQ.	ITEM	PART NO.	DESCRIPTION	SYMBOL
THE TECHNICAL MATERIEL CORP.				
MAMARONECK, NEW YORK				
TERMINAL BOARD ASSY.				
STOCK SIZE		BAC-2		
MATERIAL		WEIGHT PER PC.		
TYPE & TEMPER		CDD. 10-27-54		
HEAT TREAT. SPEC.		DRAWN		
FINISH & SPEC. NO.		ELEC. DES. APP.		
		MECH. DES. APP.		
		CHECKED		
		FINAL APPROVAL		

E		IT(4) WAS NT-110-4 IT(3) WAS NTH1032BN12 IT(2) WAS LWE10MRN IT(1) WAS SCRPI032BN32 IT(7) WAS FW10HRN IT(8) WAS FW10MRN WASHER, LOCK	6 22 25	143 25	D.V.V.	OCB	MHT
D	1	R1 WAS RA30ASC501A	11/24/54		16	OCB	OCB
C	1	COMPLETE REVISION	11/11/54	3	OCB	OCB	OCB
ISSUE	ITEM	CHANGED FROM	DATE	CN. NO.	DRAFTS	CHECKER	ENG. APP.
TOLERANCES			SCALE:				
ALL OTHERS	DEC. DIM. ±	DRILL, PUNCH, COMMERCIAL STOCK					
	FRAC. DIM. ±	SIZES AND MANUFACTURERS					
	ANGULAR DIM. ±	TOLERANCES ARE NOT INCLUDED.					

1	BAC-2	157	A-190	10-27-54
REQ. PER UNIT	MODEL	PROJECT NO.	ASS'Y. NO.	DATE