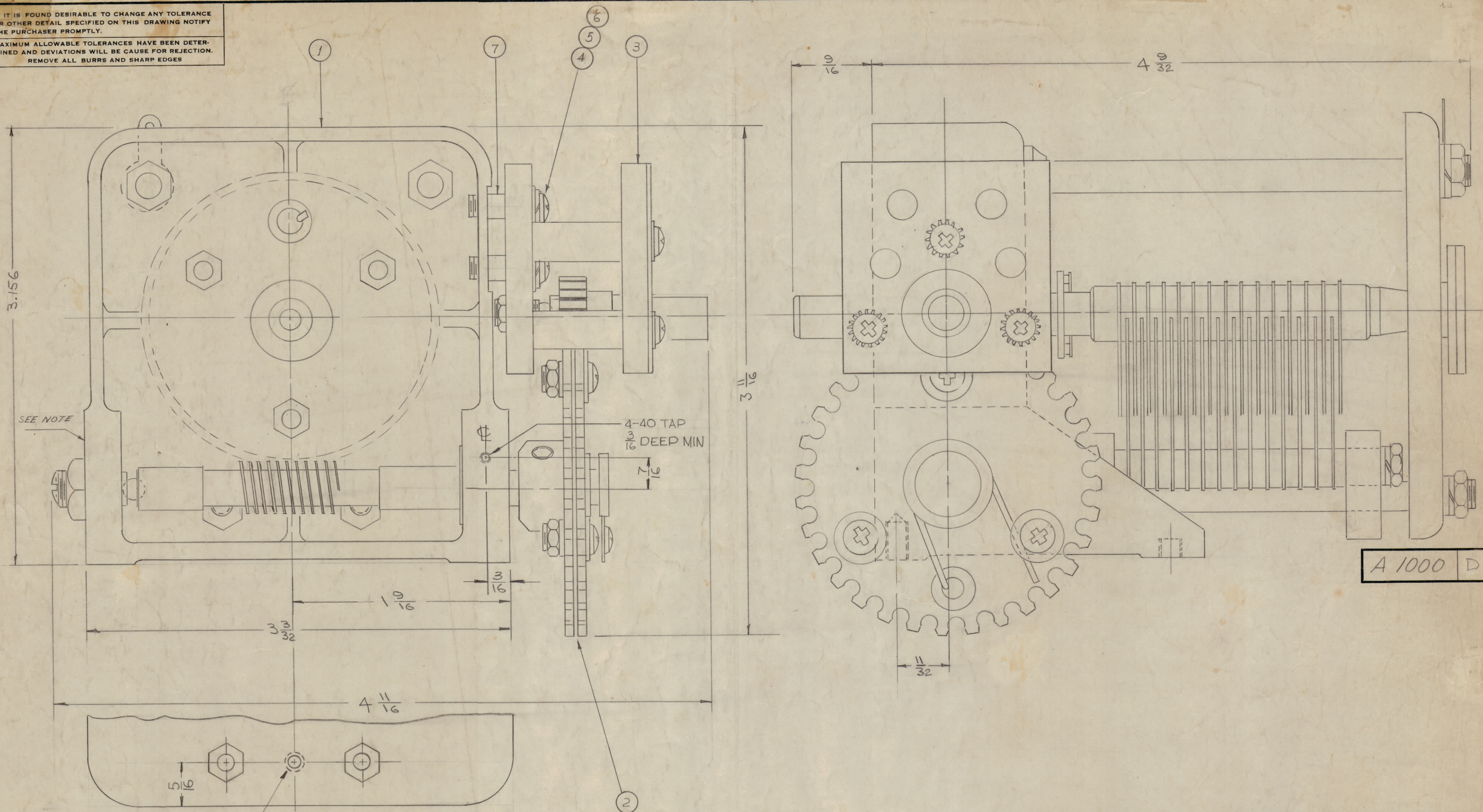


IF IT IS FOUND DESIRABLE TO CHANGE ANY TOLERANCE OR OTHER DETAIL SPECIFIED ON THIS DRAWING NOTIFY THE PURCHASER PROMPTLY.

MAXIMUM ALLOWABLE TOLERANCES HAVE BEEN DETERMINED AND DEVIATIONS WILL BE CAUSE FOR REJECTION. REMOVE ALL BURRS AND SHARP EDGES



REF: SEE ML-A1000

4	7	TE-117-22	SPACER	
4	6	FW04HBN	WASHER, FLAT	
4	5	LW504MRN	WASHER, LOCK, SPLIT	
4	4	SCBP0440BN9	SCREW, MACHINE	
	3	*	PINION GEAR ASSY	
	2	*	SPLIT SPUR GEAR ASSY	
	1	*	CAPACITOR VARIABLE	

\* REF ONLY

D	4-40 TAPPED ADDED DWG MADE 1 OF 2 B/W IT. 1-3 DELETED STAMP NOTE ADDED SEE SHEET 2 OF 2.	5/25/66	16277	WHD		
C	1 DELETED VEND REF NOTE	4/1/63	10059			
B	1 ITEM (+) WAS SCBP0440BN9	6/22/61	6470	DSM		
A	2 Added (1) 6-32 TAPPED HOLE	4/27/61	4705	DSM		
	1 Added REAR VIEW BOTTOM					

NOTE

1	VOX-3,4,5,6			6-22-62
1	RTF-2	MAS / OSC		11-10-58
1	RTF			2-1-56
1	PMO-1	285		12-17-54
1	VOX-3			12-17-54
REQ PER UNIT	MODEL	PROJECT NO.	ASSY. NO.	DATE

THE TECHNICAL MATERIEL CORP. MAMARONECK, NEW YORK			
SUB ASSEMBLY			
CAPACITOR, VARIABLE AIR			
MATERIAL		WEIGHT PER PC.	
TYPE & TEMPER		HEAT TREAT. SPEC.	
DRAWN		ELEC. DES. APP.	
CHECKED		MECH. DES. APP.	
SHEET 1 OF 2		FINAL APPROVAL	
FINISH & SPEC. NO.		A 1000 D	