

IF IT IS FOUND DESIRABLE TO CHANGE ANY TOLERANCE OR OTHER DETAIL SPECIFIED ON THIS DRAWING NOTIFY THE PURCHASER PROMPTLY.

MAXIMUM ALLOWABLE TOLERANCES HAVE BEEN DETERMINED AND DEVIATIONS WILL BE CAUSE FOR REJECTION. REMOVE ALL BURRS AND SHARP EDGES

CEMENT ITEM 26 TO ITEM 22 WITH ITEM 29

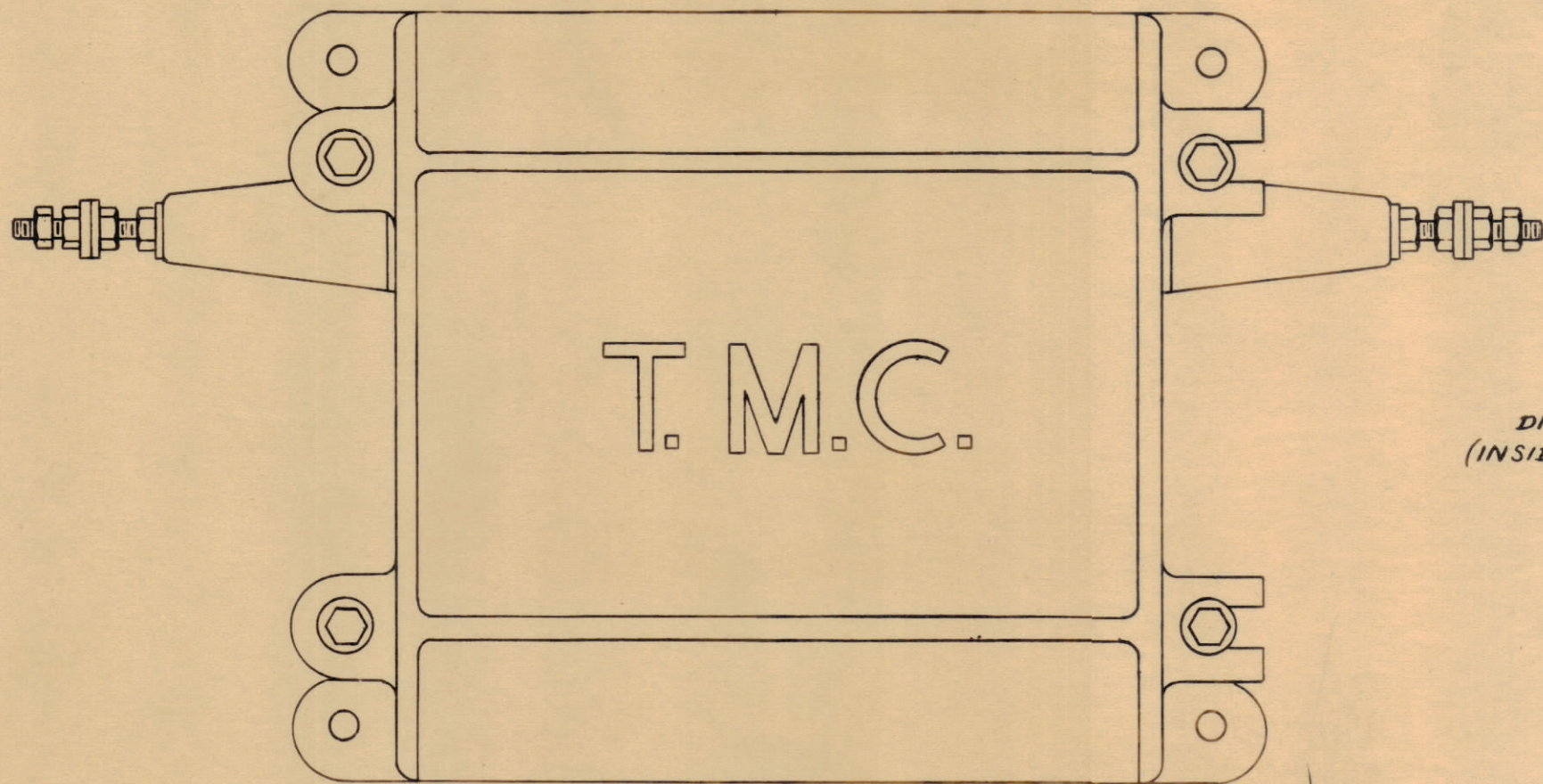
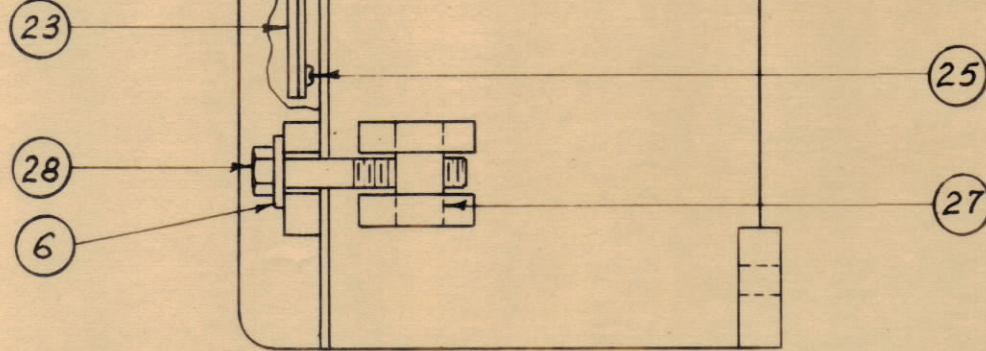
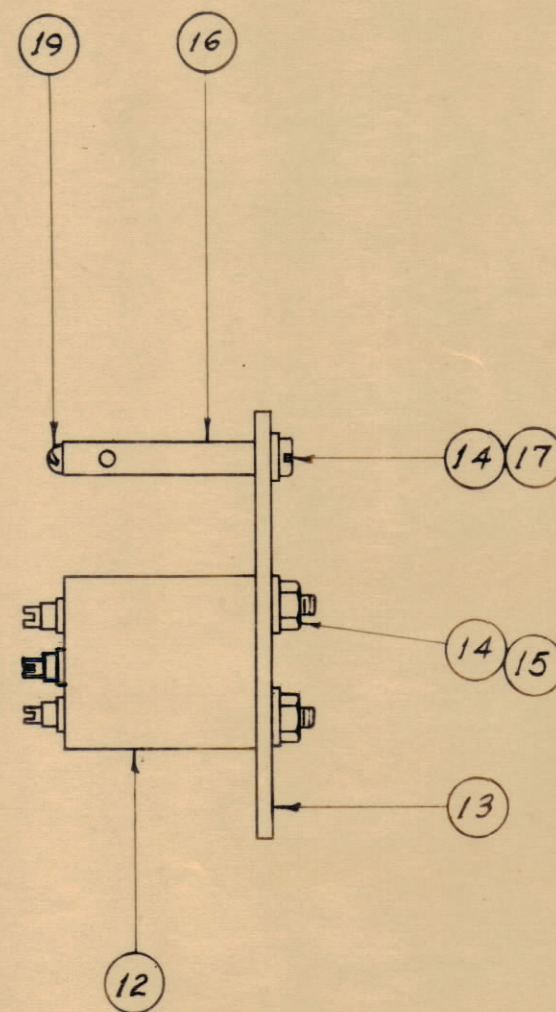
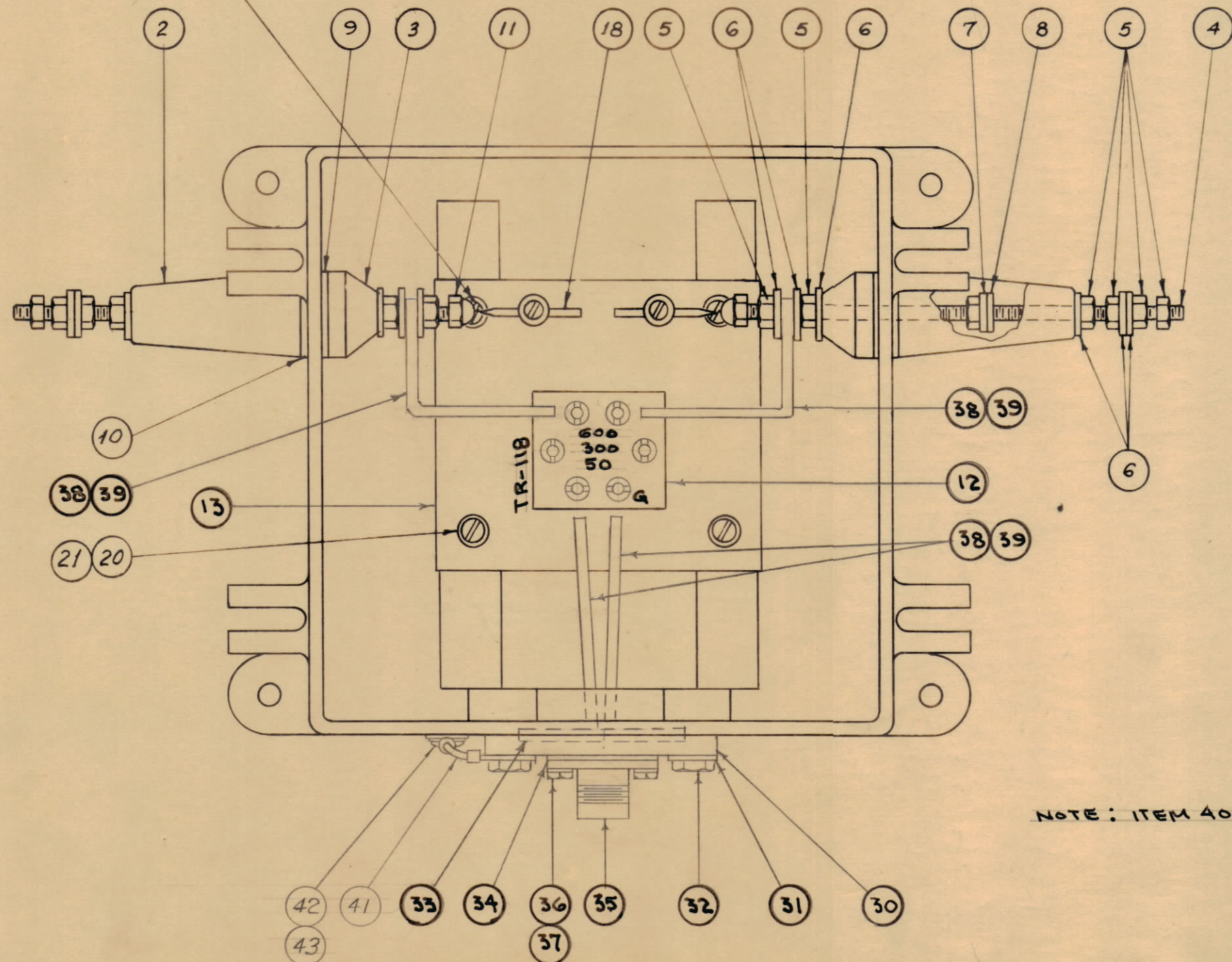


DIAGRAM (INSIDE COVER)



ADJUST SPARK GAP TO 1/32" SPACING



TRANSFORMER DETAIL

NOTE: ITEM 40 FURNISHED AS A LOOSE ITEM INSIDE CASE

1	43	SCBS103ZBC4	SCREW, MACHINE
1	42	LWS10MRC	LOCKWASHER
1	41	A-1164	GROUND STRAP, CASE
1	40	UG-421/U	CONNECTOR, TWIN
20"	39	PX-104-1-.066	INSULATION, SLEEVING
24"	38	WL-100-A	WIRE, BUSS BAR
4	37	LWS04MRC	WASHER, LOCK
4	36	SCBS0440BNS	SCREW, MACHINE
1	35	UG-422/U	CONNECTOR, TWIN
1	34	GA-111	GASKET
1	33	GA-102	"
4	32	SC-108-A	BOLT, HEX
4	31	LWS25MSS	WASHER, LOCK
1	30	PM-119	FLANGE
X	29	GL-101-1	CEMENT, PLIOBOND
4	28	SC-108-9	BOLT, HEX.
4	27	PM-100	PIN, COVER BOLT
1	26	GA-103	GASKET, COVER
4	25	SC-102-1	SCREW, THREAD CUTTING
1	24	PX-115	GUARD
1	23	LD-233	SCHEMATIC DIAGRAM
1	22	PM-105	COVER

A-1031

4	21	SCBS0832BC6	SCREW, MACHINE
4	20	LWE08MRC	WASHER, LOCK
2	19	SCRS0632SN6	SCREW, MACHINE
2	18	PM-103	SPARK ROD
2	17	SCBS0632BC6	SCREW, MACHINE
2	16	PM-102	POST
4	15	NTH0632BC8	NUT, HEX.
6	14	LWE06MRC	WASHER, LOCK
1	13	MS-100	MOUNTING PLATE
1	12	TR-118	TRANSFORMER
2	11	NTC2520BCL	NUT, CAP
2	10	GA-100	GASKET
2	9	GA-101	GASKET
2	8	GA-104	GASKET
2	7	FW25LBC	WASHER, FLAT
16	6	FW25MSS	WASHER, FLAT
12	5	NTH2520SS14	NUT, HEX
2	4	A-100	STUD, SUB-ASS'Y.
2	3	NS-101	INSULATOR, INSIDE
2	2	NS-100	INSULATOR, OUTSIDE
1	1	PM-106	CASE

REQ. ITEM	PART NO.	DESCRIPTION	SYMBOL
#	#	THE TECHNICAL MATERIEL CORP.	
#	#	MAMARONECK, NEW YORK	
#	#	ANTENNA COUPLER ASSY.	
#	#	MODEL RAC-15	
#	#	CDD. 7-21-55	
#	#	DRAWN	ELEC. DES. APP.
#	#	CHECKED	MECH. DES. APP.
#	#	HEAT TREAT. SPEC.	FINAL APPROVAL
#	#	FINISH & SPEC. NO.	

ISSUE	ITEM	CHANGED FROM	DATE	CN. NO.	DRAFTS	CHECKER	ENG. APP.
TOLERANCES		SCALE:					
ALL OTHERS	DEC. DIM. ±	DRILL, PUNCH, COMMERCIAL STOCK					
	FRAC. DIM. ±	SIZES AND MANUFACTURERS					
	ANGULAR DIM. ±	TOLERANCES ARE NOT INCLUDED.					

REQ. PER UNIT	MODEL	PROJECT NO.	ASS'Y. NO.	DATE
	RAC-15			7-21-55
	USED ON			