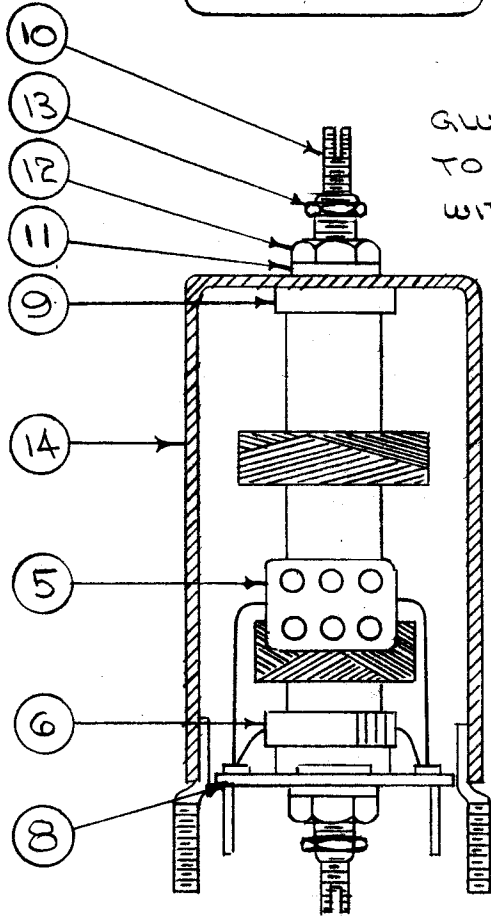
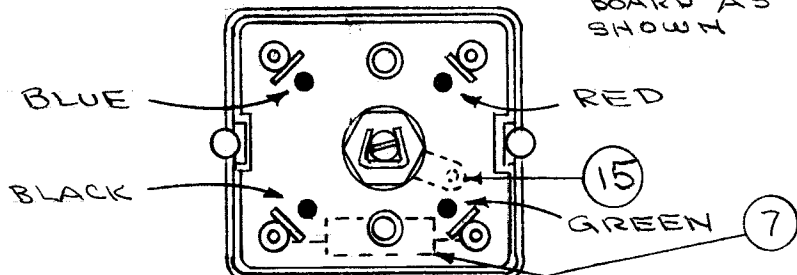


1/8 HIGH
BLACK
GOTHIC
W/LATEST
REVISION
LETTER.



GLUE BUSHINGS
TO COIL FORM
WITH ITEM 3.



COLOR CODE
BOARD AS
SHOWN

WINDING MACHINE DATA
CAM GEAR 104
DRIVER GEAR 68
CAM .187

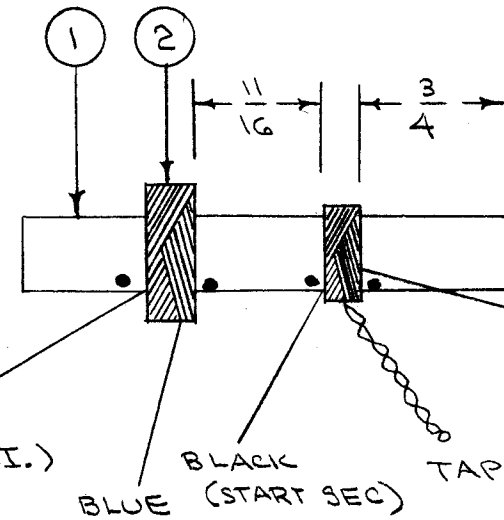
WINDING DATA

PRIMARY- 1 PI - 190 TURNS OF ITEM 2.
(UNIVERSAL WINDING).
SECONDARY- 1 PI - 60 TURNS OF ITEM 2.
(UNIVERSAL WINDING). BRING OUT TAP
AT 30 TURNS.

- 1- STAKE LEADS & TAP TO COIL FORM WITH ITEM 3. BAKE FOR 1/2 HOUR AT 215° F.
- 2- SATURATE COILS WITH ITEM 4. BAKE FOR 1/2 HOUR AT 215° F.
- 3- TEST AS PER CHART BELOW.
- 4- ASSEMBLE AS SHOWN IN SCHEMATIC BELOW AND DRAWING AT LEFT.

TEST DATA w/o CORE

WINDING	L uh	Q	F
PRI.	415 (395-435)	90 OR GREATER	190 KC
SEC.	40 (36-44)	65 " "	2.5 MC

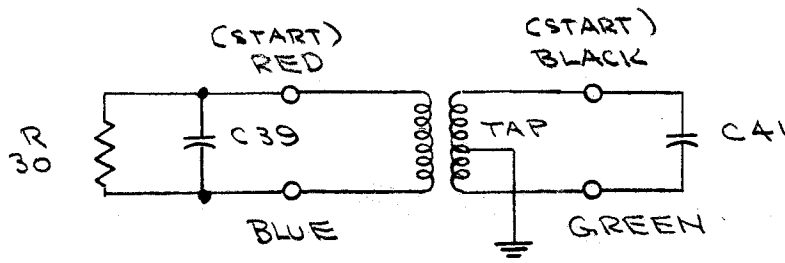


COLORS SHOWN ARE
TERMINAL BOARD
COLORS

GREEN

TAP AT 30 T.

LEADS AND TAP TO BE APPROX.
2 1/2" LONG



REQ.	ITEM	PART NO.	DESCRIPTION	SYMBOL
X	16	BS-100	SOLDER, SOFT	
1	15	TE-104-5	GROUND LUG	
1	14	A-949	CAN ASSY.	
2	13	NTH0632BN8	NUT, HEX	
2	12	NT-102	NUT, HEX	
2	11	LW125LRN	WASHER, LOCK	
2	10	CI-109-5	CORE	
2	9	SM-110	BUSHING, COIL MTG.	
1	8	A-977	TERN. BD. ASSY.	
1	7	CM30F242G03	CAPACITOR, FIXED	C41
1	6	RC20GF394J	RESISTOR, "	R30
1	5	CM15F221G03	CAPACITOR, "	C39
X	4	GL-102	Q MAX	
X	3	GL-103	CEMENT, DUCO	
X	2	WE-104-541SCQS	WIRE, LITZ 5/41 SCQS	
1	1	CF-117-2.5	COIL FORM	

REQ. ITEM	PART NO.	DESCRIPTION	SYMBOL
THE TECHNICAL MATERIEL CORP. MAMARONECK, NEW YORK			
STOCK SIZE			
FILTER ASSY., XTAK I.F.			
MATERIAL			
T5 GPR-90			
		DATE: 8/3/60	APPROVED: A. T. J.
TYPE & TEMPER	HEAT TREAT. SPEC.	DRAWN: P. Z. K.	CHECKED: [Signature]
		FINAL APPROVAL: A. T. J.	
		A 1034 J	
		ELEC. DES. APP. MECH. DES. APP.	

ISSUE	ITEM	CHANGED FROM	DATE	CH. NO.	DRAFTS	CHECKER	ENG. APP.
J		IT WAS CM30E242G03	2-20-67	17834			
H		UPDATED ITS. 5, 6, 7, 11 & 13	9-28-66	16893			
G	1	UPDATED TEST DATA CHART	10/5/63	10126			
F	1	ITEM 5 WAS CM109D2200G	5-19-60	2271			
E		ITEM 7 WAS CM109D2401G	3/2/60	1868			
D	1	REDRAWN COMPLETE REVISION	8/3/60	4			
		TOLERANCES	SCALE:				
		DEC. DIM. ±	MAXIMUM ALLOWABLE TOLERANCES HAVE BEEN DETERMINED AND ANY DEVIATIONS WILL BE CAUSE FOR REJECTION. REMOVE ALL BURRS AND SHARP EDGES				
		FRAC. DIM. ±					
		ANGULAR DIM. ±					
		1	GPR-90-RXD				5-23-60
		1	GPR-90	297			8-3-56
		REQ. PER UNIT	MODEL	PROJECT NO.	ASS'Y. NO.	DATE	
USED ON							