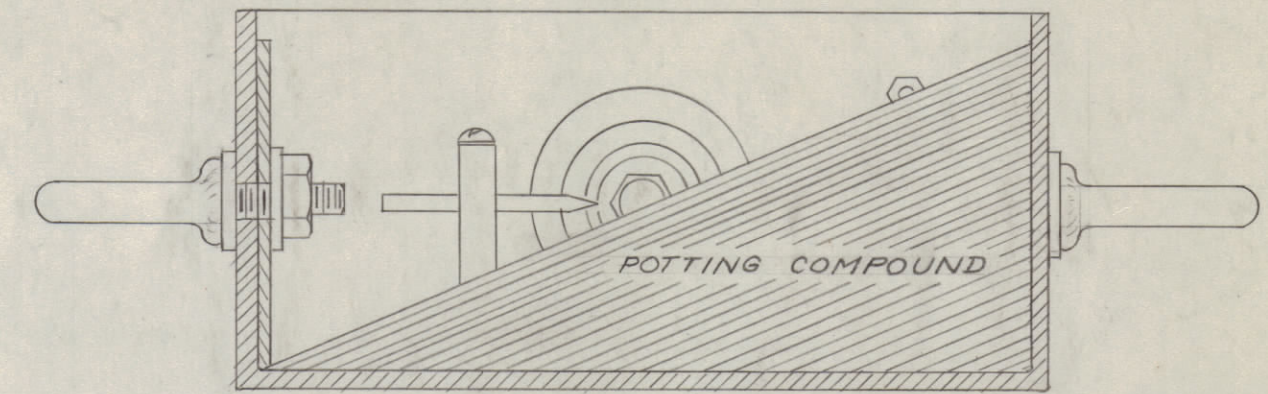
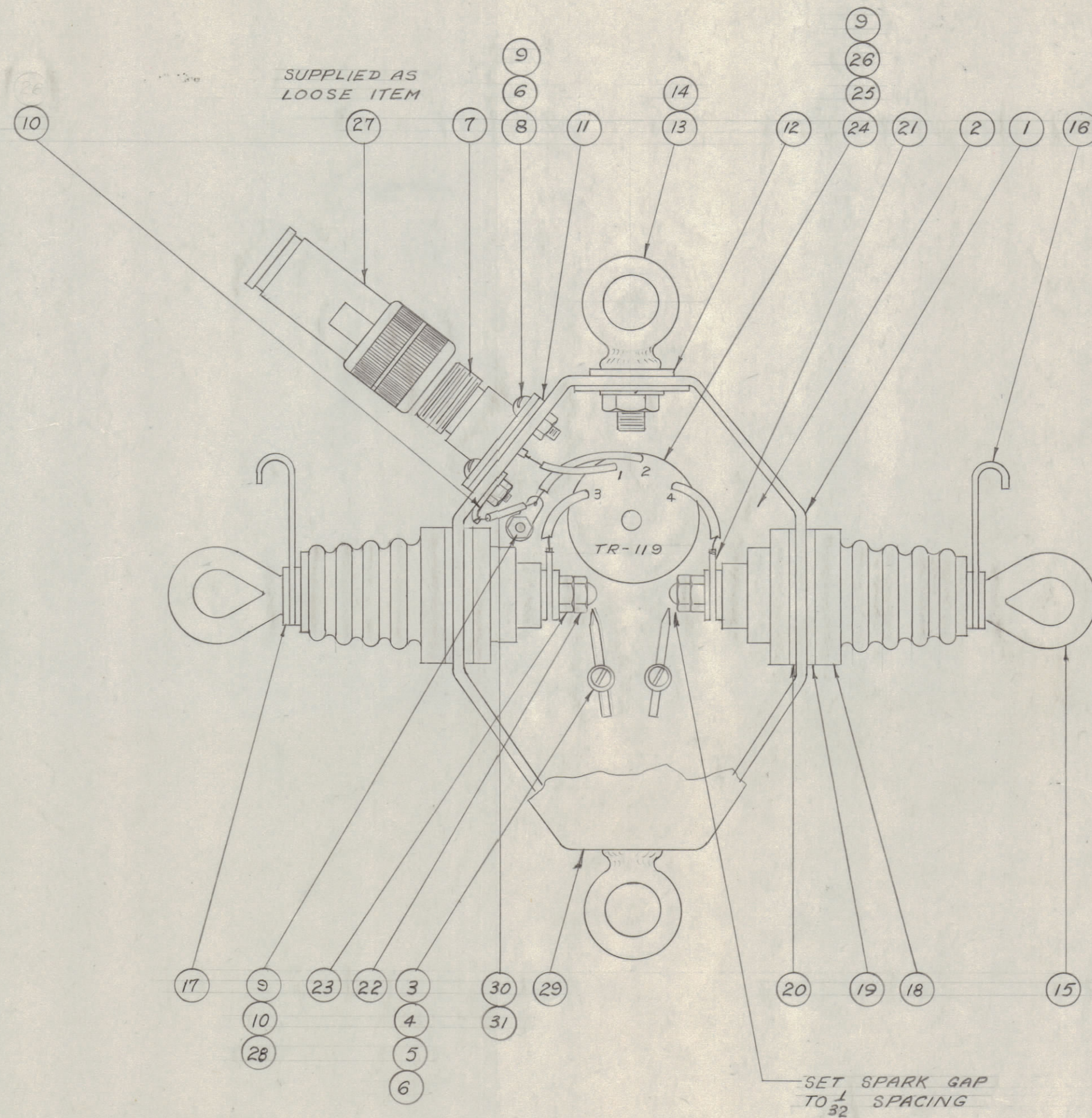


IF IT IS FOUND DESIRABLE TO CHANGE ANY TOLERANCE OR OTHER DETAIL SPECIFIED ON THIS DRAWING NOTIFY THE PURCHASER PROMPTLY.

MAXIMUM ALLOWABLE TOLERANCES HAVE BEEN DETERMINED AND DEVIATIONS WILL BE CAUSE FOR REJECTION. REMOVE ALL BURRS AND SHARP EDGES



POTTING DETAIL:
 POT AS SHOWN ABOVE MAKE SURE CONNECTION TO UG-58A/U IS COVERED AND SPARK GAP IS UNCOVERED

X	33	BS-100	SOLDER, SOFT
X	32	GL-106	COMPOUND, POTTING
X	31	WL-100-3	WIRE BUSS BAR
X	30	PX-104-1-068	INSULATION SLEEVING
1	29	PM-238	COVER
1	28	SCBS0440BC4	SCREW, MACHINE
1	27	UG-216/U	PLUG
1	26	LWEO4MRC	LOCKWASHER
1	25	SCBS0440BC2	SCREW, MACHINE
1	24	TR-119	TRANSFORMER
2	23	SUPPLIED WITH INSULATOR	NUT, HEX
2	22	NTC1032BCL	NUT, CAP

A-1088

2	21	TE-132	TERMINAL
2	20	SUPPLIED WITH INSULATOR	GASKET, CORK
2	19	GA-115	GASKET, NEOPRENE
2	18	NS-109	INSULATOR
8	17	SUPPLIED WITH INSULATOR	WASHER, FLAT
2	16	MS-523	SERVICING, HOOK
2	15	PM-218	STUD, BOLT
2	14	LWS25MSS	LOCKWASHER, SPLIT
2	13	SC-116	EYE BOLT
2	12	GA-114	GASKET
1	11	GA-106	GASKET
2	10	TE-104-1	TERMINAL, LOCKING
6	9	NTH0440BC8	NUT, HEX
4	8	SCBS0440BC8	SCREW, MACHINE
1	7	UG-58A/U	RECEPTACLE
8	6	LWS04MRC	LOCKWASHER
2	5	PM-222	SPARK ROD
4	4	SCBS0440BC6	SCREW, MACHINE
2	3	PM-221	POST
1	2	MS-415	MOUNTING PLATE
1	1	PM-237	CASE (SMALL)

REQ. ITEM	PART NO.	DESCRIPTION	SYMBOL
THE TECHNICAL MATERIEL CORP.			
MAMARONECK, NEW YORK			
MAIN ASSEMBLY (SMALL CASE)			
DAC-2			
STOCK SIZE		1B9-7-55	
MATERIAL		WEIGHT PER PC.	
TYPE & TEMPER		DRAWN: JND	
HEAT TREAT. SPEC.		ELEC. DES. APP. MECH. DES. APP.	
FINISH & SPEC. NO.		CHECKED: JND	
		FINAL APPROVAL: [Signature]	

NOTICE TO PERSONS RECEIVING THIS DRAWING
 THE TECHNICAL MATERIEL CORPORATION claims proprietary right in the material disclosed herein. This drawing is issued in confidence for engineering information only and may not be reproduced or used to manufacture anything shown hereon without permission from THE TECHNICAL MATERIEL CORPORATION to the user. This drawing is loaned for mutual assistance and is subject to recall at any time.

Property of:
 THE TECHNICAL MATERIEL CORPORATION
 MAMARONECK, NEW YORK

DAC-2			9-7-55
MODEL	PROJECT NO.	ASS'Y. NO.	DATE
USED ON			

ISSUE	ITEM	CHANGED FROM	DATE	CN. NO.	DRAFTS	CHECKER	ENG. APP.
TOLERANCES							
ALL OTHERS				SCALE:			
DEC. DIM. ±				DRILL, PUNCH, COMMERCIAL STOCK			
FRAC. DIM. ±				SIZES AND MANUFACTURERS			
ANGULAR DIM. ±				TOLERANCES ARE NOT INCLUDED.			