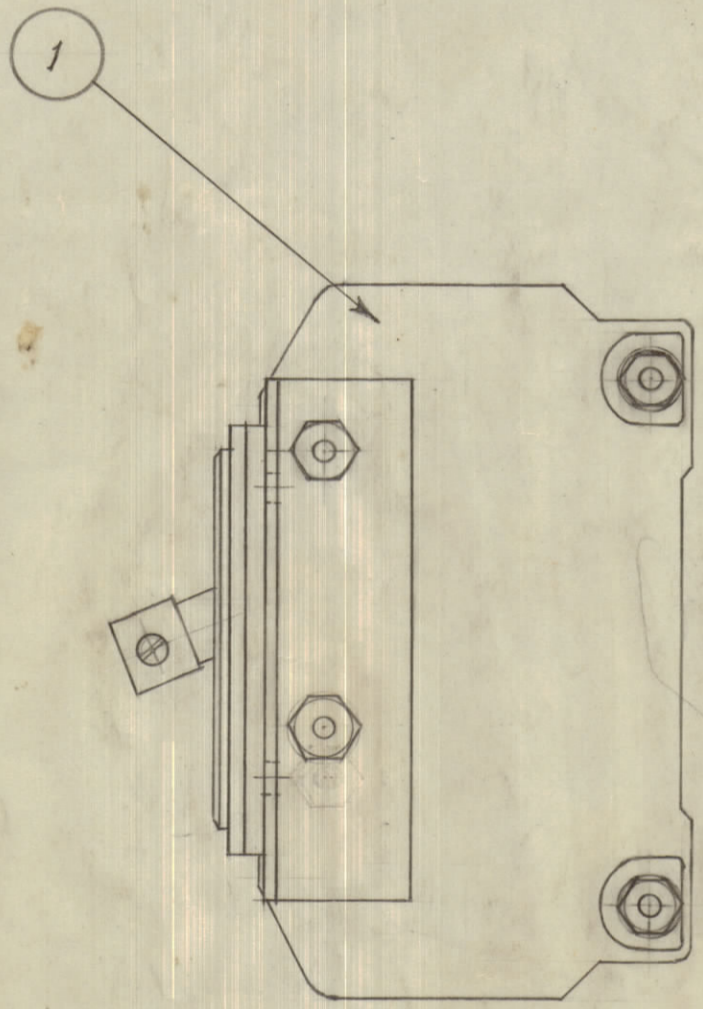
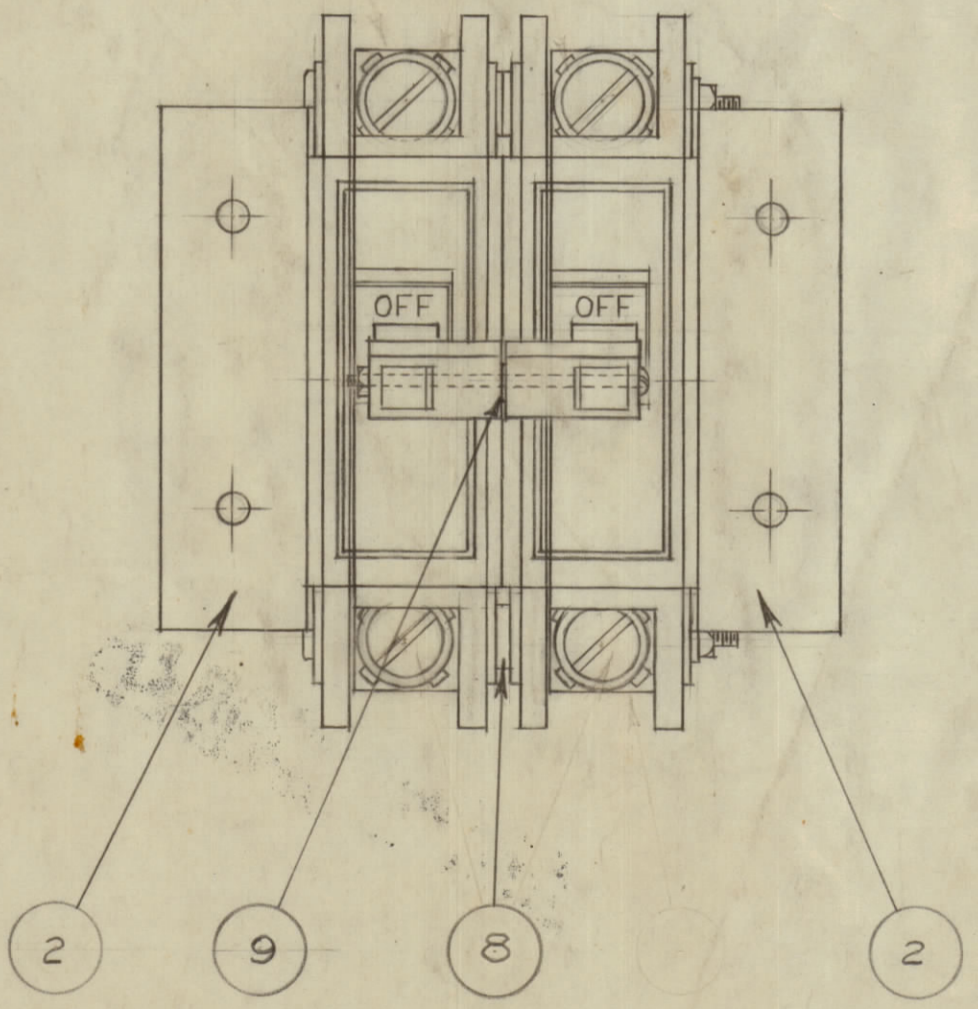
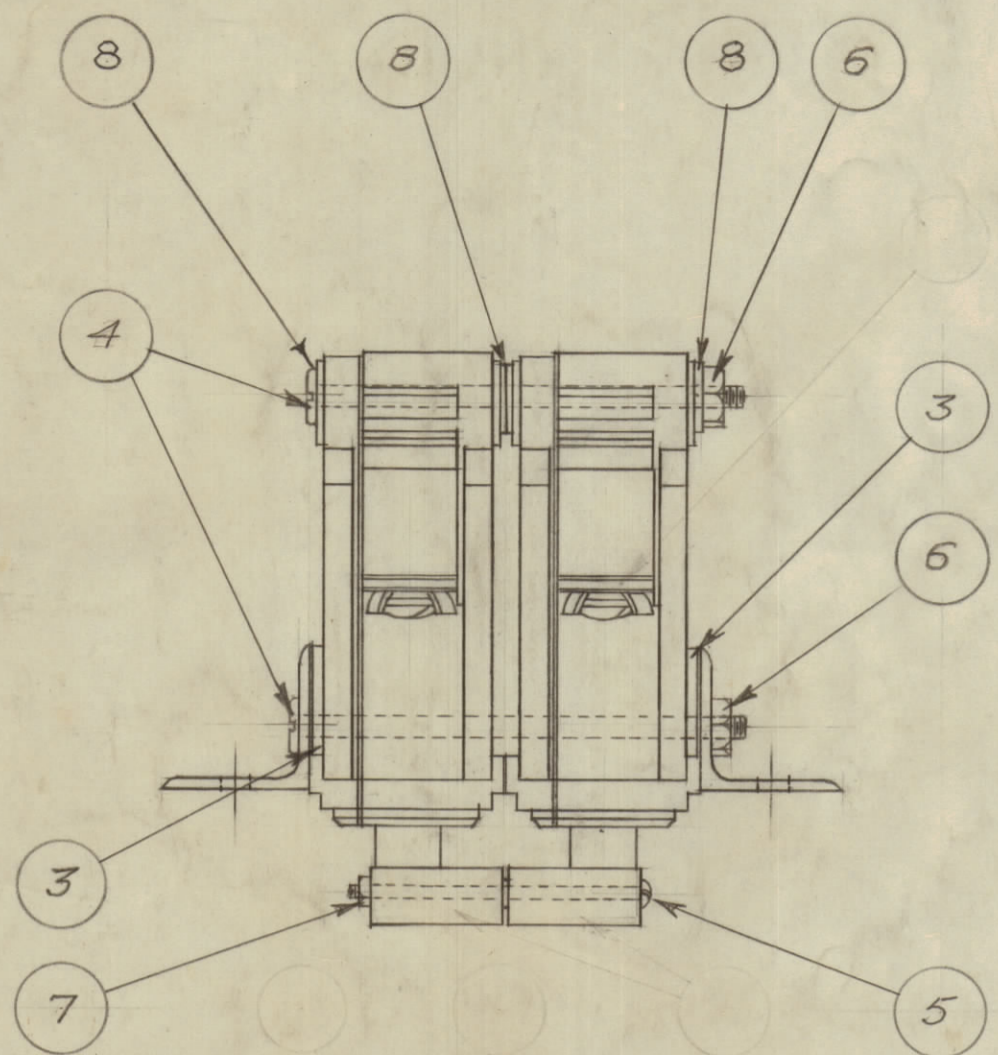


NOTICE TO PERSONS RECEIVING THIS DRAWING

THE TECHNICAL MATERIEL CORPORATION claims proprietary right in the material disclosed hereon. This drawing is issued in confidence for engineering information only and may not be reproduced or used to manufacture anything shown hereon without permission from THE TECHNICAL MATERIEL CORPORATION to the user. This drawing is loaned for mutual assistance and is subject to recall at any time.

Property of:
THE TECHNICAL MATERIEL CORPORATION
 MAMARONECK, NEW YORK



A-10002

REQ	ITEM	PART NO	DESCRIPTION	SYMBOL
2	9	LWS04MSC	LOCK WASHERS	
8	8	FW06MSC	WASHER	
1	7	NTH040BC8	NUTS HEXAGON	
4	6	NTH0632BC10	NUTS HEXAGON	
1	5	SCBS0440SC24	SCREWS MACHINE	
4	4	SCBS0632SC36	SCREWS MACHINE	
2	3	PM 10008	CIRCUIT BREAKER SUPPORT SHIM STRIP	
2	2	PM 10009	CIRCUIT BREAKER SUPPORT BRACKET	
2	1	SW-10001	CIRCUIT BREAKER	
			TMC (Canada) LTD. OTTAWA - ONTARIO	
STOCK SIZE			CIRCUIT BREAKER - ASSEMBLY.	
MATERIAL			WEIGHT PER LB	
TYPE & TEMPER.			EL 5-12-52	
HEAT TREAT SPEC.			DRAWN ELEC. DES. APP. MECH. DES. APP.	
FINISH & SPEC. NO			CHECKED <i>Jak</i> FINAL APPROVAL <i>Woo</i>	

MODEL	PROJECT NO	ASSY NO	DATE
DCP-1	10004	A10001	4-12-52
USED ON			