

IF IT IS FOUND DESIRABLE TO CHANGE ANY TOLERANCE OR OTHER DETAIL SPECIFIED ON THIS DRAWING NOTIFY THE PURCHASER PROMPTLY.  
 MAXIMUM ALLOWABLE TOLERANCES HAVE BEEN DETERMINED AND DEVIATIONS WILL BE CAUSE FOR REJECTION. REMOVE ALL BURRS AND SHARP EDGES

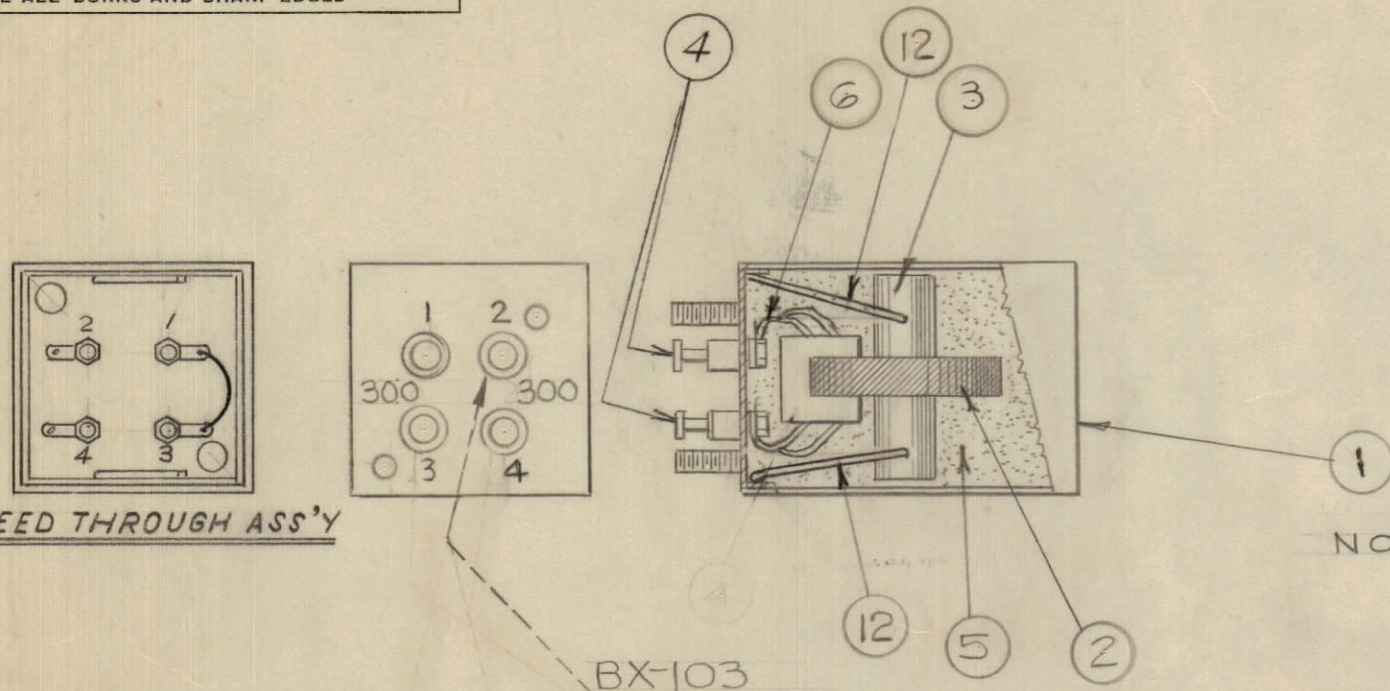
**CONFIDENTIAL**

**ELECTRICAL TEST DATA**

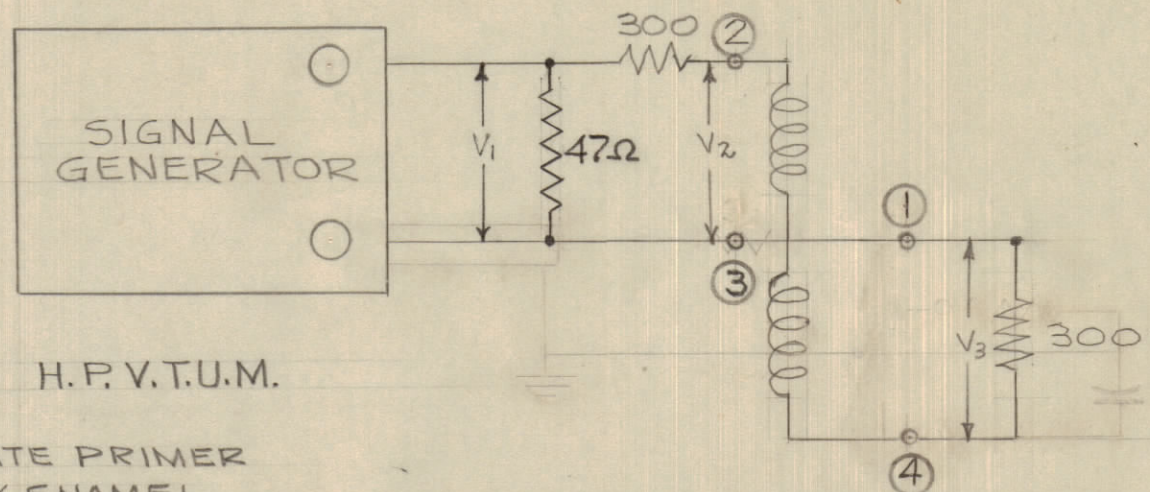
NOTICE TO PERSONS RECEIVING THIS DRAWING

THE TECHNICAL MATERIEL CORPORATION claims proprietary right in the material disclosed hereon. This drawing is issued in confidence for engineering information only and may not be reproduced or used to manufacture anything shown hereon without permission from THE TECHNICAL MATERIEL CORPORATION to the user. This drawing is loaned for mutual assistance and is subject to recall at any time.

Property of:  
 THE TECHNICAL MATERIEL CORPORATION  
 MAMARONECK, NEW YORK



NOTE: S-114 ZINC CHROMATE PRIMER  
 3-115 SMOOTH GREY ENAMEL



H.P.V.T.U.M.

f	R.F. VOLTS *				DB DOWN
fmcs	V <sub>1</sub>	V <sub>2</sub>	V <sub>3</sub>	MAX. UNBALANCE	
2	1.0	45-50	>.44	0.04	-2DB
8	1.0	475-50	>.46	0.02	
28	1.0	41-50	>.44	0.06	-2DB
32	1.0		.44		-2DB

\*VOLTAGES MEASURED WITH H.P.V.T.V.M. OR EQUIVALENT

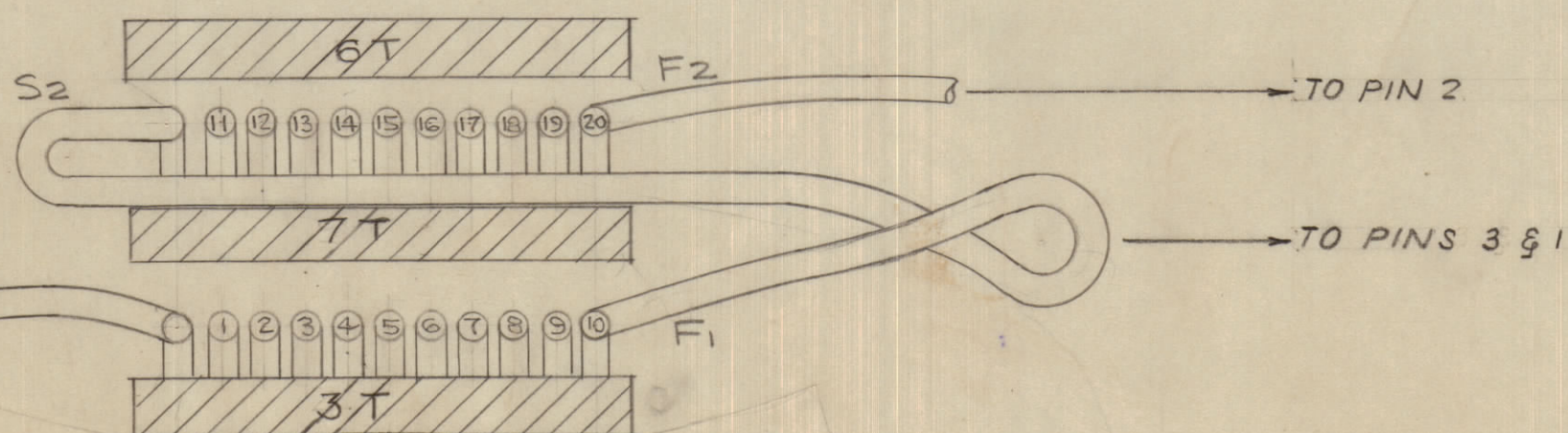
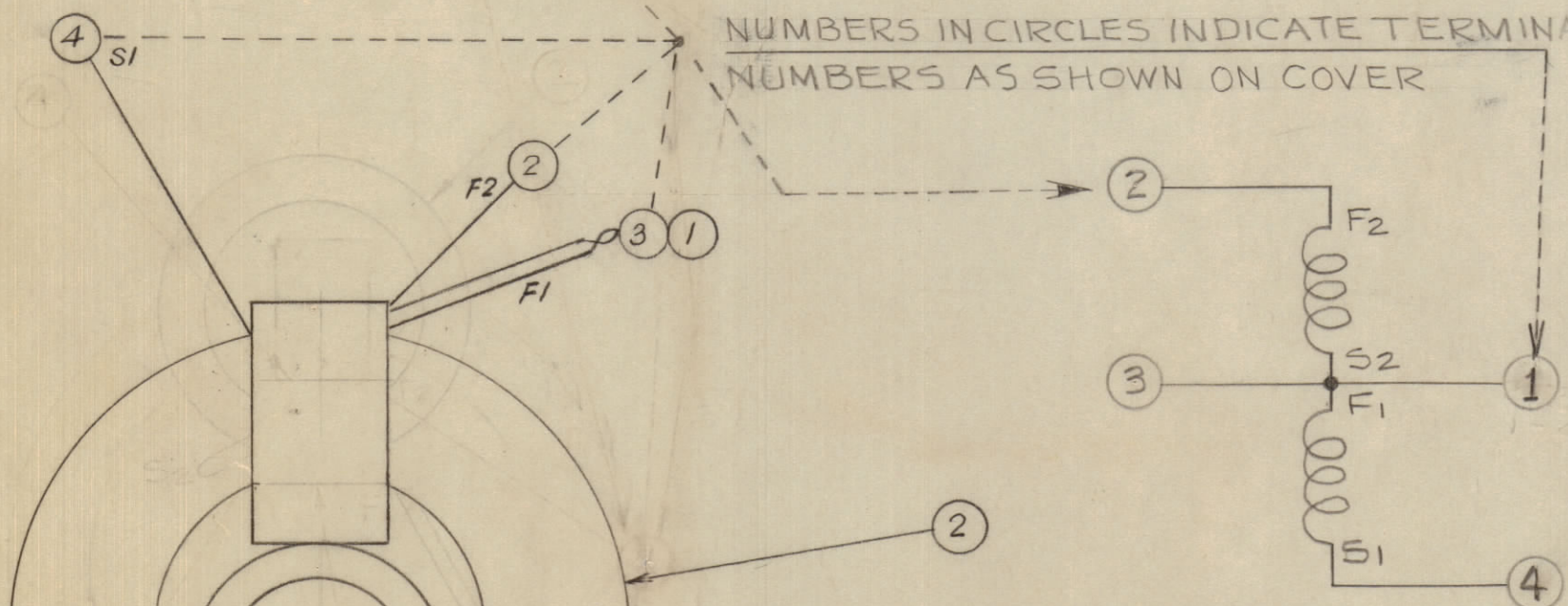
DB DOWN  $20 \log_{10} \frac{V_3(8mc)}{V_3(2,8,24,32mc)}$

2-3 INPUT 300 $\Omega$  UNBALANCED

4-1 OUTPUT 300 $\Omega$  UNBALANCED

FREQUENCY RESPONSE 2-30 MC  $\pm$  0.5 DB

NUMBERS IN CIRCLES INDICATE TERMINAL NUMBERS AS SHOWN ON COVER



A-10039 F

**NOT TO BE RELEASED  
 W/O AUTHORIZATION**  
 AUTH. BY \_\_\_\_\_  
 DATE: \_\_\_\_\_

F	13	DWG. CHANGED PICTORIALY TEST DATA CHANGED BOM CORRECTED	4 JAN 1961	WHD	SLK	M/K	
E	12	BOM, SCHEMATIC & TEST DATA CHANGED	27 DEC 1960	WHD	SLK		
D	11	ITEM 9 WAS 5 LAYERS ITEM 8 WAS 5 LAYERS ITEM 7 WAS 4 LAYERS	10/8/56	T.H.	L.M.		
C	10	PART 2- CI-10002- CORE- GRADE III B. WAS CORE- GRADE IV B	23/9/55	E.G.			
	9	FREQUENCY RESPONSE 2-30 MC $\pm$ 0.5 DB WAS FREQUENCY RESPONSE $\pm$ 0.5 DB				WAV	
B	8	ELEC. TEST DATA DIAGRAM - ① WAS ④ - ④ WAS ①					
	7	LEAD CONNECTION CORRECTED					
	6	S <sub>1</sub> WINDING 4 WAS 2					
	5	F <sub>1</sub> WINDINGS 3+1 WERE 3+4					
	4	F <sub>2</sub> WINDING 2 WAS 1					
	3	NOTES ADDED: 2-3 INPUT 300 $\Omega$ UNBALANCED 4-1 OUTPUT 300 $\Omega$ " " " " $\pm$ 0.5 DB	11/8/55 2/8/55	E.G.	MAC		
A	2	WL 100-4 (MAT'L LIST ADDED)	29/6/55				
	1	A-10039 WAS A-10001	29/6/55				
ISSUE	ITEM	CHANGED FROM	DATE	CN. NO.	DRAFTS	CHECKER	ENG. APP.
TOLERANCES		SCALE:					
ALL OTHERS	DEC. DIM. $\pm$ FRAC. DIM. $\pm$ ANGULAR DIM. $\pm$	DRILL, PUNCH, COMMERCIAL STOCK SIZES AND MANUFACTURERS TOLERANCES ARE NOT INCLUDED.					

2	12	MS-10259	STABILIZER	
X	11	GL-10001	2 COATS-RADIO SERVICE CEMENT	
1	10	WI-10001-11	36" No 30 D.C.C. WIRE	
	9	TA-10001-2	6 LAYERS MASKING TAPE	
	8	TA-10001-2	7 LAYERS MASKING TAPE	
1	7	TA-10001-2	3 LAYERS MASKING TAPE	
X	6	BS-100	SOLDER SOFT	
X	5	GL-106	POTTING COMPOUND	
4	4	TE-126	FEED THROUGH	
1	3	CF-10014	FORMS COIL	
1	2	CI-10001-3	CORE- GRADE III C	
1	1	BX 103	CASE TRANSFORMER	
REQ.	ITEM	PART NO.	DESCRIPTION	SYMBOL
			<b>TMC (Canada) LIMITED</b>	
			OTTAWA	ONTARIO
			<b>TRANSFORMER NEUTRALIZING</b>	
			<b>TR 058</b>	
			RTL	
			DRAWN	ELEC. DES. APP. MECH. DES. APP.
			HEAT TREAT. SPEC.	FINAL APPROVAL
			FINISH & SPEC. NO.	
			A-10039 F	

AMC-6-3			
AMC-6-2			9-6-55
MODEL	PROJECT NO.	ASS'Y. NO.	DATE
USED ON			