

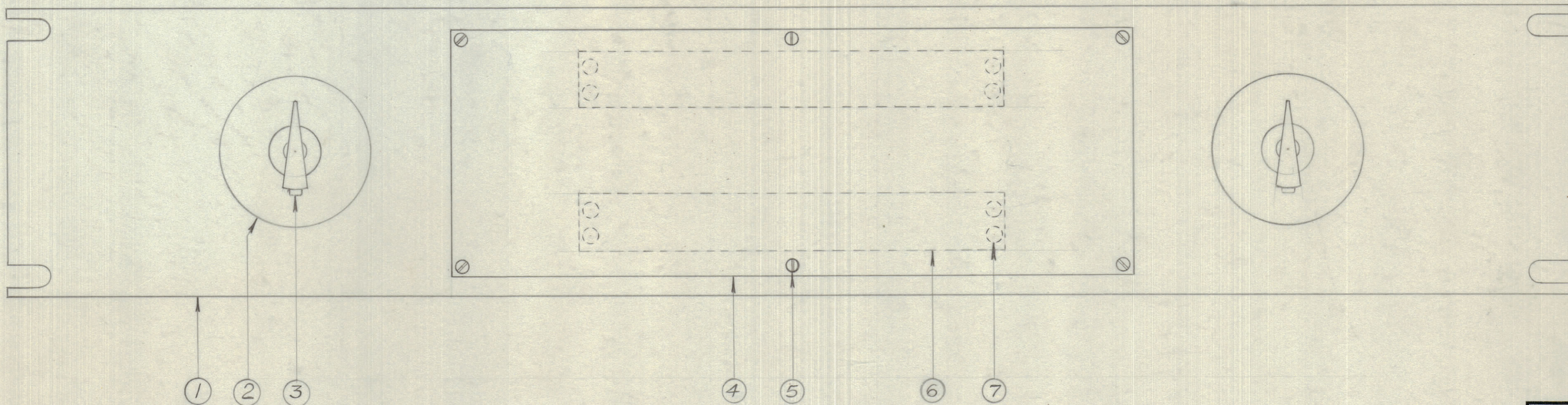
IF IT IS FOUND DESIRABLE TO CHANGE ANY TOLERANCE OR OTHER DETAIL SPECIFIED ON THIS DRAWING NOTIFY THE PURCHASER PROMPTLY.

MAXIMUM ALLOWABLE TOLERANCES HAVE BEEN DETERMINED AND DEVIATIONS WILL BE CAUSE FOR REJECTION. REMOVE ALL BURRS AND SHARP EDGES

**NOTICE TO PERSONS RECEIVING THIS DRAWING**

THE TECHNICAL MATERIEL CORPORATION claims proprietary right in the material disclosed hereon. This drawing is issued in confidence for engineering information only and may not be reproduced or used to manufacture anything shown hereon without permission from THE TECHNICAL MATERIEL CORPORATION to the user. This drawing is loaned for mutual assistance and is subject to recall at any time.

Property of:  
THE TECHNICAL MATERIEL CORPORATION  
MAMARONECK, NEW YORK



A-10105

REF: WIRING DIAGRAM - ID-10082

8	9	LWS 06MRC	LOCKWASHER
8	8	NTH 0632 BCB	NUT
8	7	SCFS0632BC10	SCREW
2	6	TM-102-12	TERMINAL STRIP
6	5		SCREW - SELF TAP 2-56 x 3/16
1	4	NP-10014	NAMEPLATE
2	3		SWITCH
2	2		SWITCH ESCUTEONS
1	1	MS-10173	PANEL

REQ.	ITEM	PART NO.	DESCRIPTION	SYMBOL
<b>TMC (Canada) LIMITED</b> OTTAWA ONTARIO				
ASSEMBLY - SPEAKER & OUTPUT SWITCHING PANEL				
L. MARION				
DRAWN			ELEC. DES. APP.	MECH. DES. APP.
CHECKED			FINAL APPROVAL	
A-10105				

ISSUE	ITEM	CHANGED FROM	DATE	CN. NO.	DRAFTS	CHECKER	ENG. APP.
TOLERANCES							
SCALE: FULL				DRILL, PUNCH, COMMERCIAL STOCK SIZES AND MANUFACTURERS TOLERANCES ARE NOT INCLUDED.			
ALL OTHERS	DEC. DIM. ±		ANGULAR DIM. ±				

MCP-2	8548		21/5/57
MODEL	PROJECT NO.	ASS'Y. NO.	DATE
USED ON			