

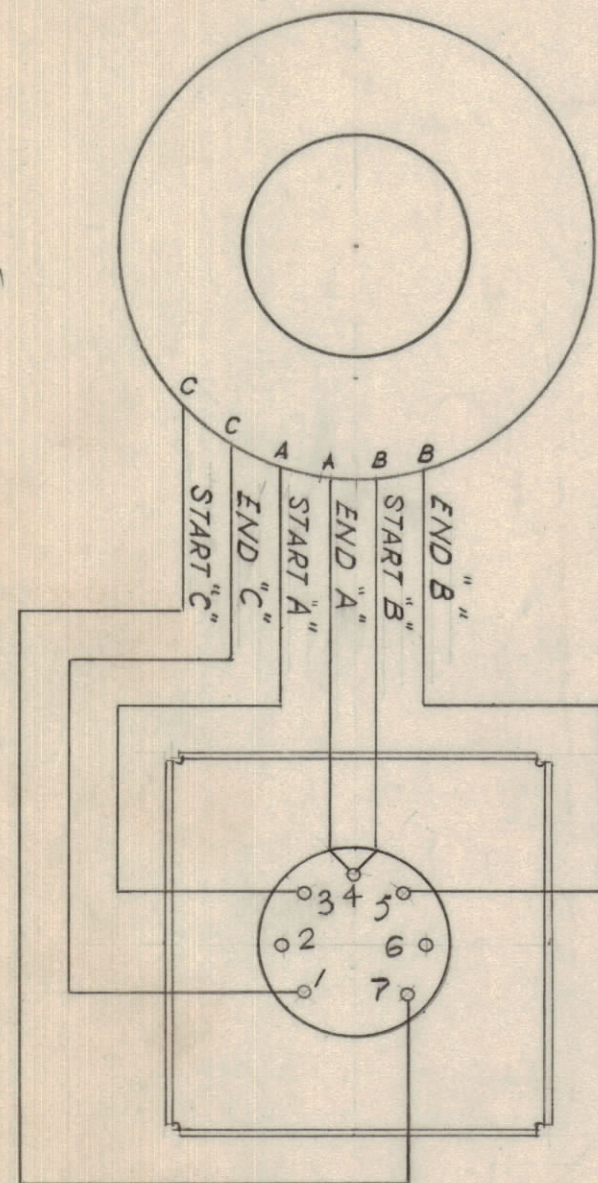
IF IT IS FOUND DESIRABLE TO CHANGE ANY TOLERANCE OR OTHER DETAIL SPECIFIED ON THIS DRAWING NOTIFY THE PURCHASER PROMPTLY.

MAXIMUM ALLOWABLE TOLERANCES HAVE BEEN DETERMINED AND DEVIATIONS WILL BE CAUSE FOR REJECTION. REMOVE ALL BURRS AND SHARP EDGES

NOTICE TO PERSONS RECEIVING THIS DRAWING

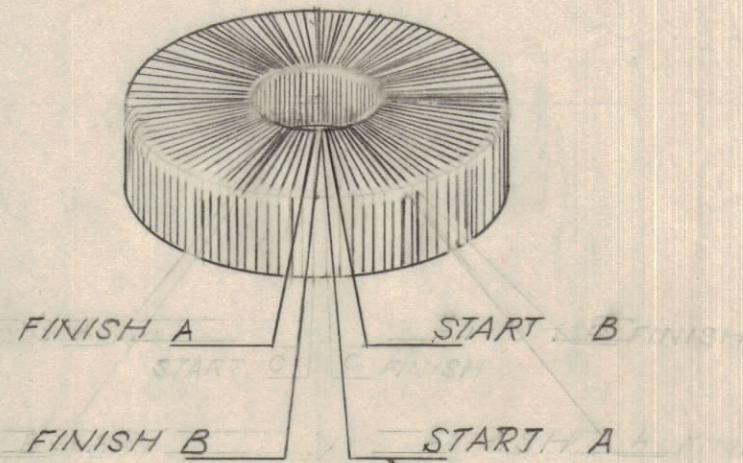
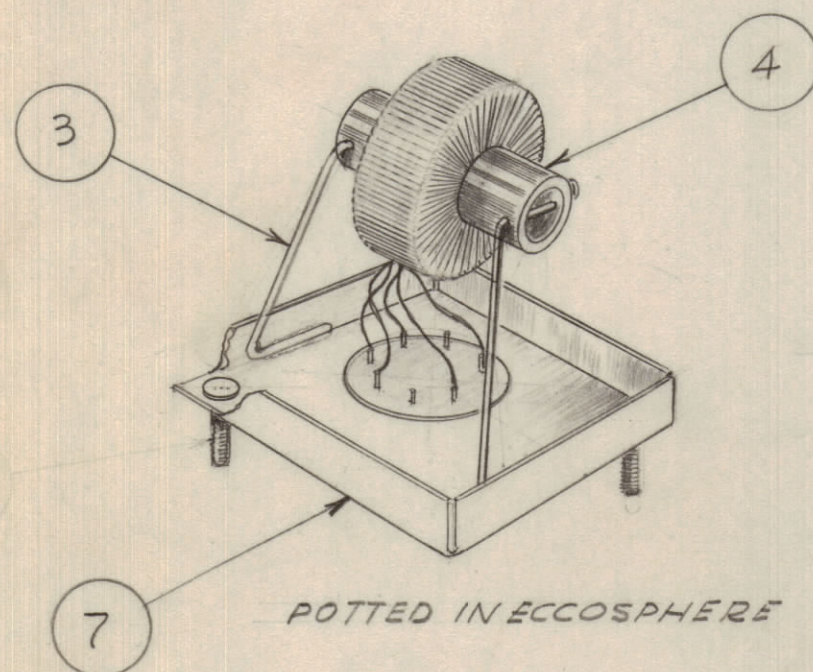
THE TECHNICAL MATERIEL CORPORATION claims proprietary right in the material disclosed herein. This drawing is issued in confidence for engineering information only and may not be reproduced or used to manufacture anything shown hereon without permission from THE TECHNICAL MATERIEL CORPORATION to the user. This drawing is loaned for mutual assistance and is subject to recall at any time.

Property of:
THE TECHNICAL MATERIEL CORPORATION
MAMARONECK, NEW YORK



STEP 1.
BIFILAR WINDING (2 WIRES SIDE BY SIDE)
2x34 TURNS #30 DCC WIRE DISTRIBUTED OVER WHOLE CORE; CONTINUE WITH SAME TWO WIRES WINDING 2x6 TURNS EVENLY DISTRIBUTED OVER WHOLE CORE AND SECURE WITH RADIO CEMENT.

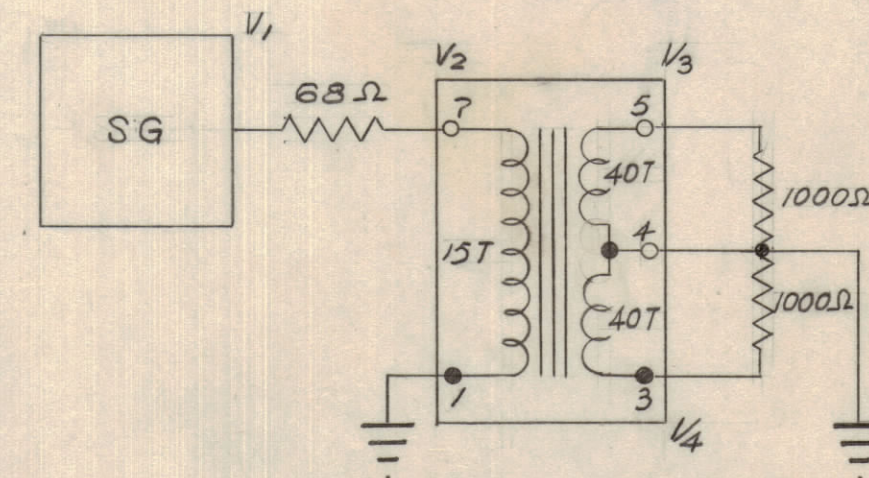
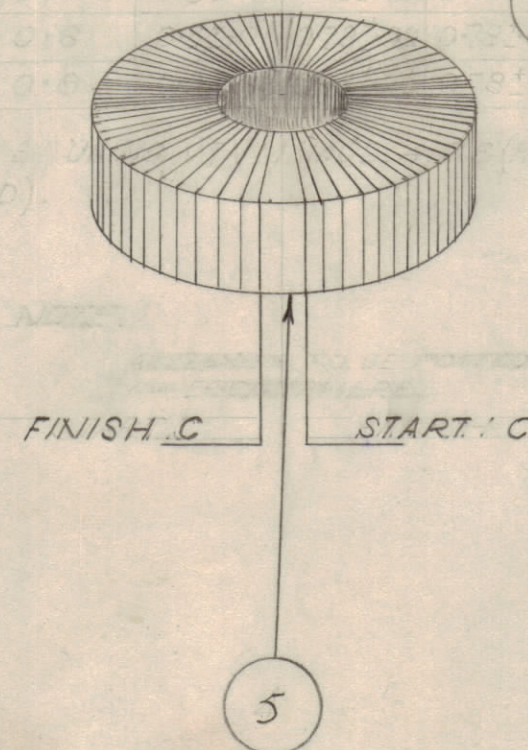
STEP 2.
WIND 1x15 TURNS #30 DCC WIRE EVENLY DISTRIBUTED OVER THE WHOLE CORE COAT WINDINGS WITH RADIO CEMENT.



TEST DATA

FREQ MCS	V ₁	V ₂	V ₂ (V)	V ₃ (V)	V ₄ (V)	MAX DIFF V ₃ V ₄
0.1	0.6	0.3 ± 0.02	0.78 ± 0.03	0.78 ± 0.05	0.04	0.04
1.0	0.6	0.3 ± 0.01	0.78 ± 0.02	0.78 ± 0.02	0.01	0.01
2.0	0.6	0.3 ± 0.03	0.78 ± 0.05	0.78 ± 0.05	0.01	0.01

OBTAINED BY USING VTVM MOD. 410 B (HEWLETT PACKARD).



TEST DATA

FREQ MCS	V ₁	V ₂	V ₂ (V)	V ₃ (V)	V ₄ (V)	MAX DIFF V ₃ V ₄
0.1	0.6	0.3 ± 0.02	0.78 ± 0.03	0.78 ± 0.05	0.04	0.04
1.0	0.6	0.3 ± 0.01	0.78 ± 0.02	0.78 ± 0.02	0.01	0.01
2.0	0.6	0.3 ± 0.03	0.78 ± 0.05	0.78 ± 0.05	0.01	0.01

OBTAINED BY USING VTVM MOD. 410 B (HEWLETT PACKARD)

REQ.	ITEM	PART NO.	DESCRIPTION	SYMBOL
		BX-100-3S	CAN, BODY & LID	
		MS-10258	BASE MOUNTING	
		TS-10004	HEADER, MULTI TERMINAL	
			CORE MN 31	
REF	9	LD-10104	STAMPING DETAIL (VRA).	
	1	BX-100-3S	CAN, BODY & LID.	
	1	MS-10258	BASE MOUNTING	
	1	TS-10004	HEADER MULTI TERMINAL	
	1	CI-10007	CORE MN 31	
	1	CF-10012	COIL FORM	
	2	MS-10259	STABILIZER	
			STABILIZER 3/3	
A/R	1	WI-10009	WIRE NO.30 DCC	

STOCK SIZE	MATERIAL	WEIGHT PER PC.	TYPE & TEMPER	HEAT TREAT. SPEC.	FINISH & SPEC. NO.

B		IT WAS WI-10007 WIRE #30 BRIDGEPORT INS. WIRE CO.	12-15-66	17485	RME	WHD	MM
A	1	TEST DATA REVISED TR 087 WAS TR 082A WINDING INSTRUCTIONS REVISED WINDING VIEW ADDED POTTING INSTRUCTIONS ADDED BALLOONS ADDED B.O.M. REVISED	27 OCT 1960		WHD	ENG	W.K.
ISSUE	ITEM	CHANGED FROM	DATE	CN. NO.	DRAFTS	CHECKER	ENG. APP.
		TOLERANCES		SCALE: —			
ALL OTHERS	DEC. DIM. ± —	DRILL, PUNCH, COMMERCIAL STOCK SIZES AND MANUFACTURERS TOLERANCES ARE NOT INCLUDED.					
	FRAC. DIM. ± —						
	ANGULAR DIM. ± —						

NOT TO BE RELEASED W/O AUTHORIZATION

AUTH. BY _____

DATE: _____

DA 101	CE 5107		2 SEPT. 1960
MODEL	PROJECT NO.	ASS'Y. No.	DATE
USED ON			

A-10186 B