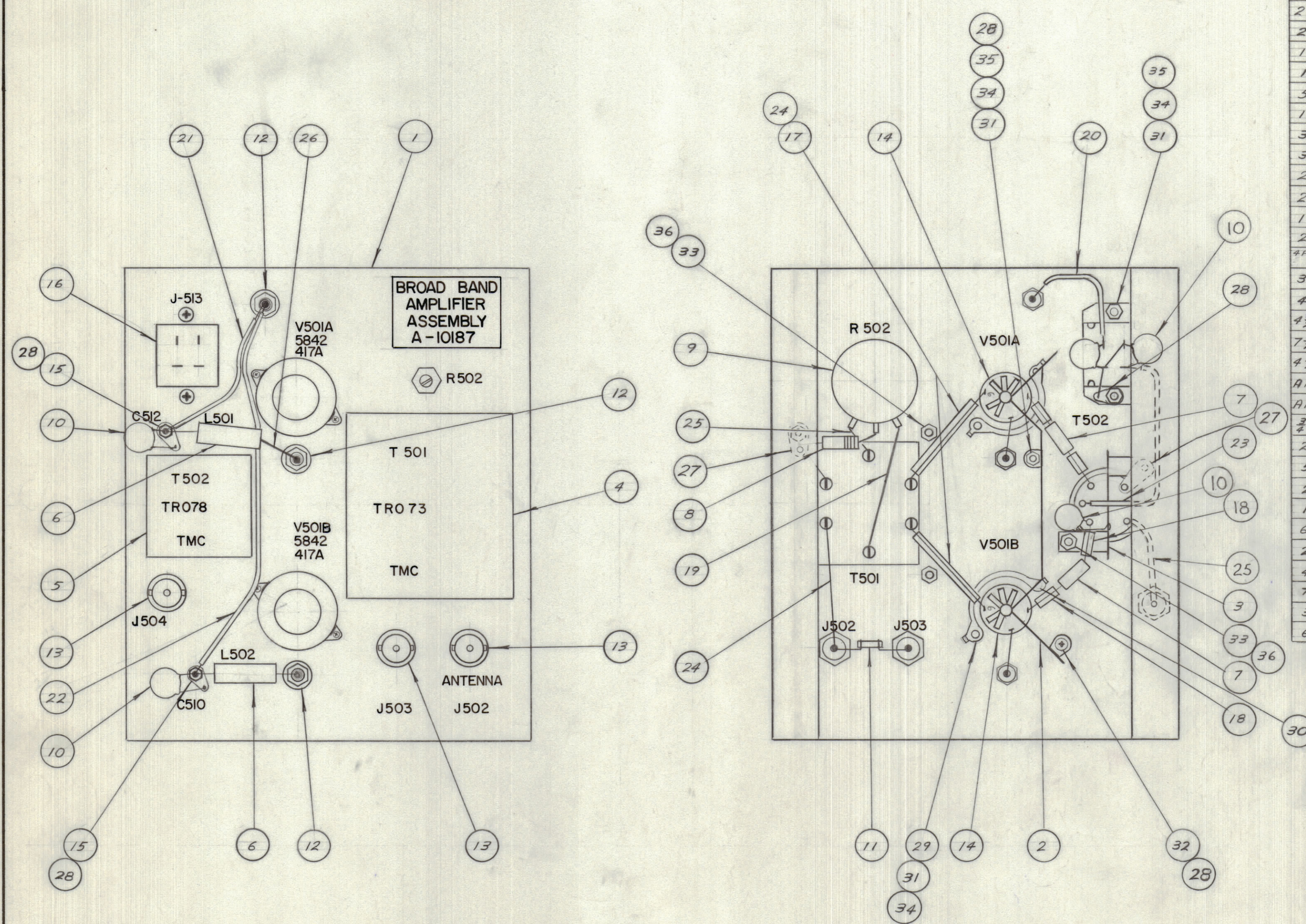


IF IT IS FOUND DESIRABLE TO CHANGE ANY TOLERANCE OR OTHER DETAIL SPECIFIED ON THIS DRAWING NOTIFY THE PURCHASER PROMPTLY.		DIMENSIONS IN INCHES UNLESS OTHERWISE SPECIFIED					
MAXIMUM ALLOWABLE TOLERANCES HAVE BEEN DETERMINED AND DEVIATIONS WILL BE CAUSE FOR REJECTION. REMOVE ALL BURRS AND SHARP EDGES.							
ISSUE	ITEM	CHANGED FROM	DATE	CN. NO.	DRAFTS	CHECKER	ENG. APP.
A		IT. 10&25 CALLOUTS & PICT. ADD.	10-7-64	12571	9,2		



REQ.	ITEM	PART NO.	DESCRIPTION	SYMBOL
1	1	LD-10052	CHASSIS	
1	2	MS-10316	SCREEN	
1	3	MS-10317	SHIELD	
1	4	TR-073	INPUT TRANSFORMER	T-501
1	5	TR-078	OUTPUT TRANSFORMER	T502
2	6	CL-10005-1	CHOKE	L501
2	7	CL-10006	CHOKE	L502
1	8	RC32GF180J	RESISTOR, FIXED	R501
1	9	RVALAYS8500A	POTENTIOMETER	R502
5	10	CC-10002-1	CAPACITOR, FIXED	C502, C503, C508, C510, C512
1	11	CC-10003-2	CAPACITOR, FIXED	C501
3	12	NS-10003	FEED-THRU	
3	13	UG-625/U	CONNECTOR	
2	14	T5-103-PO1	SOCKET, TUBE 9 PIN	
2	15	TE-102-2	TERMINAL TURRET	
1	16	JJ-120-1	PLUG	
2	17	PX-370-16-7-1.25	INSULATION, SLEEVING, TEFLON	
4PC	18	PX-370-22-7-375	INSULATION, SLEEVING, TEFLON	
3"	19	MWC22(7)UP	WIRE, INSULATED, PINK	
4"	20	MWC22(7)U1	WIRE, INSULATED, BROWN	
4 1/2"	21	MWC22(7)U1	WIRE, INSULATED, BROWN	
7 1/2"	22	MWC22(7)U1	WIRE, INSULATED, BROWN	
4 1/2"	23	MWC22(7)U4	WIRE, INSULATED, YELLOW	
AR	24	WL-100-4	WIRE, BUSS #16	
AR	25	WL-100-7	WIRE, BUSS #22	
3/4"	26	PX-104-1-034	SLEEVING, INSULATING, BLACK	
2	27	TE-10011-2	LUG, SOLDER	
5	28	TE-10011-1	LUG, SOLDER	
2	29	NT-101-5	NUT STRAP	
1	30	SCBP0440BN3	SCREW, MACHINE	
6	31	SCBP0440BN4	SCREW, MACHINE	
2	32	SCBP0440BN5	SCREW, MACHINE	
4	33	LWE06MRN	LOCKWASHER EXTERNAL	
7	34	LW104MRN	LOCKWASHER INTERNAL	
3	35	NTH0440BN8	NUT, HEXAGON	
6	36	NTH0632BN8	NUT, HEXAGON	

NOTE:  
-PIN "2" OF ITEMS 14 SHALL BE REMOVED

TOLERANCES		SCALE:
ALL OTHERS	DEC. DIM. ± FRAC. DIM. ± ANGULAR DIM. ±	DRILL, PUNCH, COMMERCIAL STOCK SIZES AND MANUFACTURERS TOLERANCES ARE NOT INCLUDED.

AMC 6-5	PROJECT NO.	ASS'Y. NO.	12-12-63
MODEL	PROJECT NO.	ASS'Y. NO.	DATE

STOCK SIZE		TMC (Canada) LIMITED OTTAWA ONTARIO	
MATERIAL		PREAMPLIFIER SUB ASSEMBLY	
TYPE & TEMPER		RD	ELEC. DES. APP. MECH. DES. APP.
HEAT TREAT. SPEC.		CHECKED	FINAL APPROVAL
FINISH & SPEC. NO.		A-10187 A	