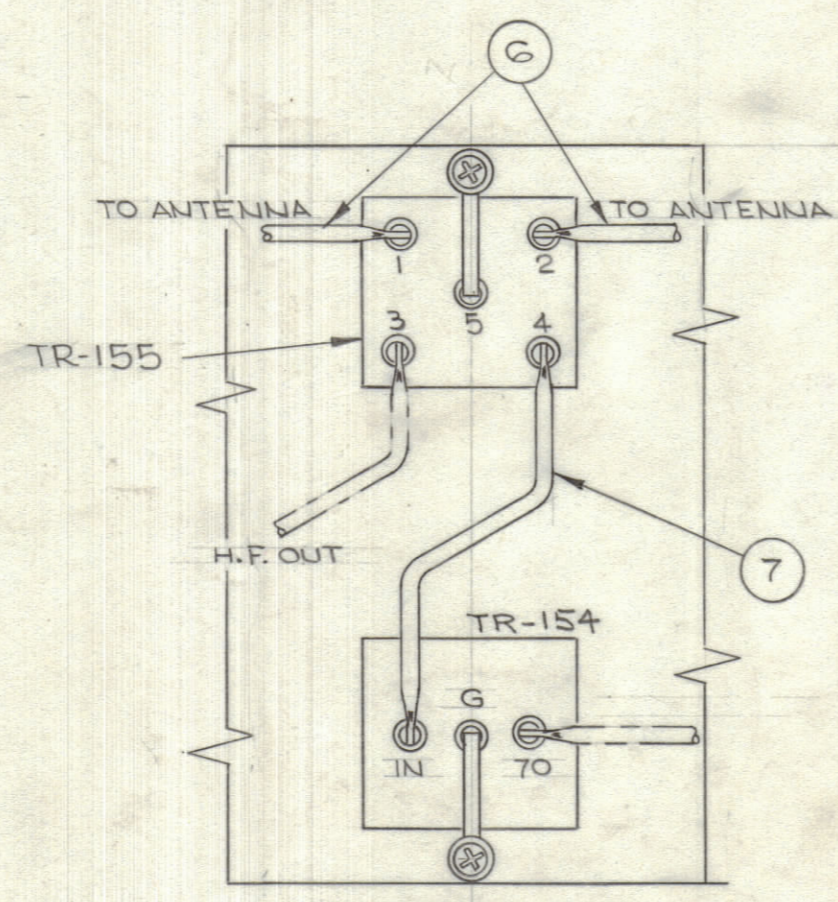
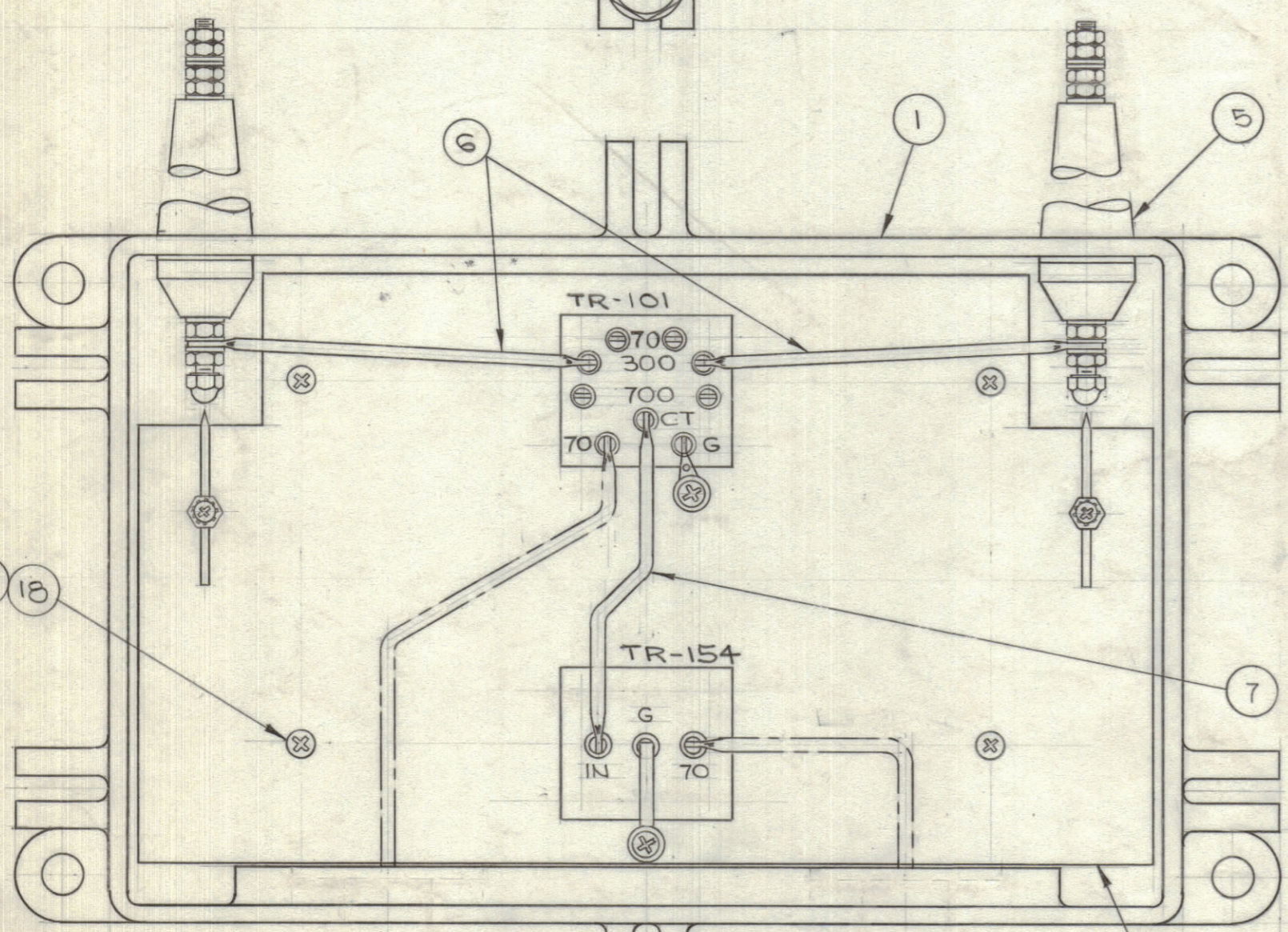
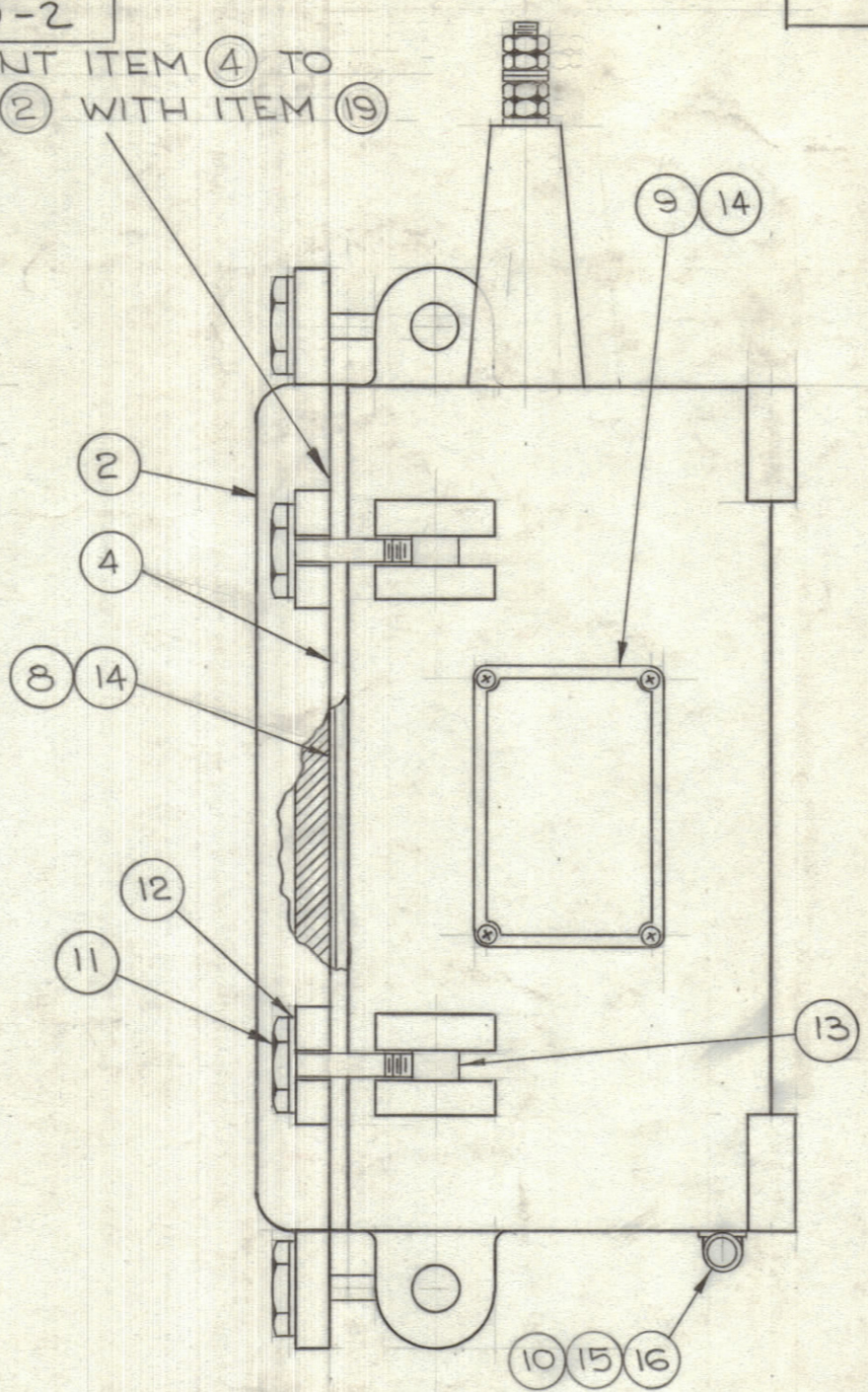
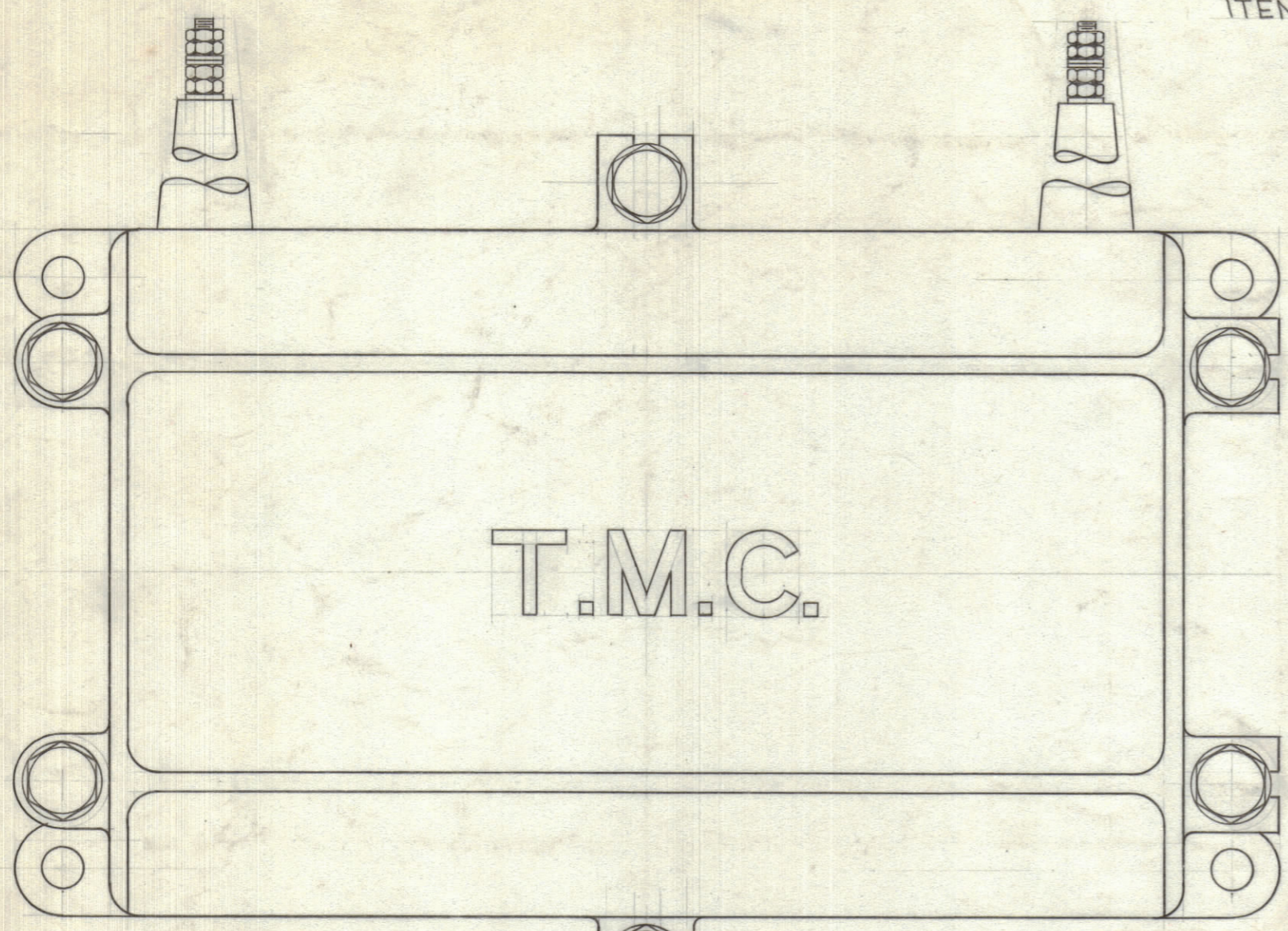


MODEL	ITEM 6		ITEM 7	ITEM 8	ITEM 9	ASSY NO.
	IMPEDANCE	CABLE				
HLC-1A	300	CA-798	CA-797	LD-197	NP-1001-9	A-10240-1
	70 & 700	CA-809				
HLC-3	#	CA-809	CA-799	LD-1014G	NP-1001-10	A-10240-2

REVISIONS					
ZONE	SYM	DESCRIPTION	DATE	E.M.N. NO.	APPD.
-	A	REVISED & REDRAWN	11/9/63	10174	[Signature]
-	B	ASSY NO COLUMN ADDED TO CHART ON TITLE (HLC-1A) WAS (HLC-1) IT. 14 WAS SF025 6SN3, DESCR. UPDATED	9.2.64	12038	[Signature]

CEMENT ITEM ④ TO ITEM ② WITH ITEM ⑯



A-10240-1

A-10240-2

ARRANGEMENT FOR HLC-1 SHOWN

ALTERNATE ARRANGEMENT FOR HLC-3

NOTE: COVER REMOVED TO SHOW INTERIOR ASSEMBLY

NOTES

QTY./UNIT	HLC-3	MODEL USED ON	ASSY. NO.
SCALE	#	CODE	
THE CONTENTS OF THIS DRAWING ARE THE EXCLUSIVE PROPERTY OF THE TECHNICAL MATERIEL CORP. ITS UNAUTHORIZED USE OR REPRODUCTION IN WHOLE OR IN PART IS STRICTLY FORBIDDEN.			

REQ'D.	ITEM	PART NUMBER	DESCRIPTION	SYMBOL
X	20	BS 100	SOLDER, SOFT	
X	19	GL-101-2	ADHESIVE, PLIOBOND	
4	18	LWE10MRN	WASHER, LOCK, EXTERNAL	
4	17	SCBPI032BNG	SCREW, MACHINE	
1	16	LWS25MSS	WASHER, LOCK, SPLIT	
1	15	SCHH2520SS8	BOLT, MACHINE	
8	14	SFB0256SN3	SCREW, TAPPING, THD CTG.	
6	13	PM-100	NUT, PLAIN, BARREL	
6	12	FW25HSS	WASHER, FLAT	
6	11	SCHH2520SS28	BOLT, MACHINE	
1	10	TE-178-2	TERMINAL, LUG	
1	9	SEE CHART	PLATE, IDENTIFICATION	
1	8	SEE CHART	DIAGRAM, SCHEMATIC	
1	7	SEE CHART	LEAD, ELECTRICAL	
2	6	SEE CHART	LEAD, ELECTRICAL, ANTENNA	
2	5	A-102	INSULATOR ASSY	
1	4	GA-107	GASKET, COVER	
1	3	A-3277	TRANSFORMER & MTG. PLATE ASSY	
1	2	PM-114	COVER	
1	1	PM-10073	CASE	

I. JOHNSON		LIST OF MATERIAL	
MATERIAL		THE TECHNICAL MATERIEL CORP. MAMARONECK, NEW YORK	
FINISH		TITLE FINAL ASSEMBLY HLC-1A, HLC-3	
DRAWN [Signature]	DATE 8-27-63	FINAL APPROVAL [Signature]	DATE
CHECKED [Signature]	DATE 9/29/63	A-10240	
DECIMALS .X ± .05 .XX ± .01 .XXX ± .005	TOLERANCES	ELECT. DES. DATE 10/1/63	MECH. DES. DATE 10/1/63
FRACTIONS ± 1/64 ANGLES ± 0° 30'		SHEET	

A-10240 B