

IF IT IS FOUND DESIRABLE TO CHANGE ANY TOLERANCE OR OTHER DETAIL SPECIFIED ON THIS DRAWING NOTIFY THE PURCHASER PROMPTLY.

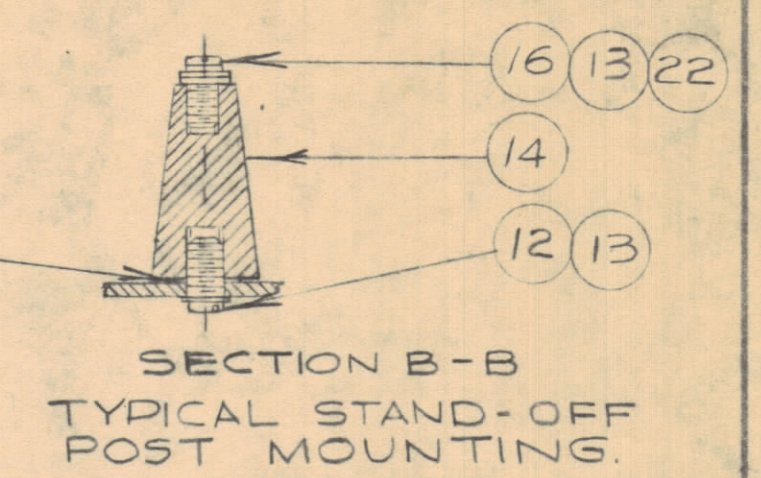
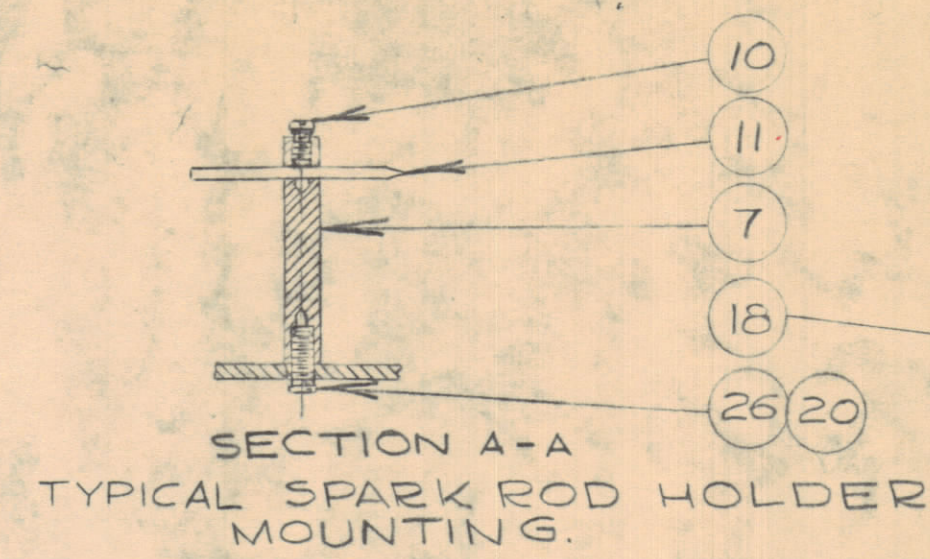
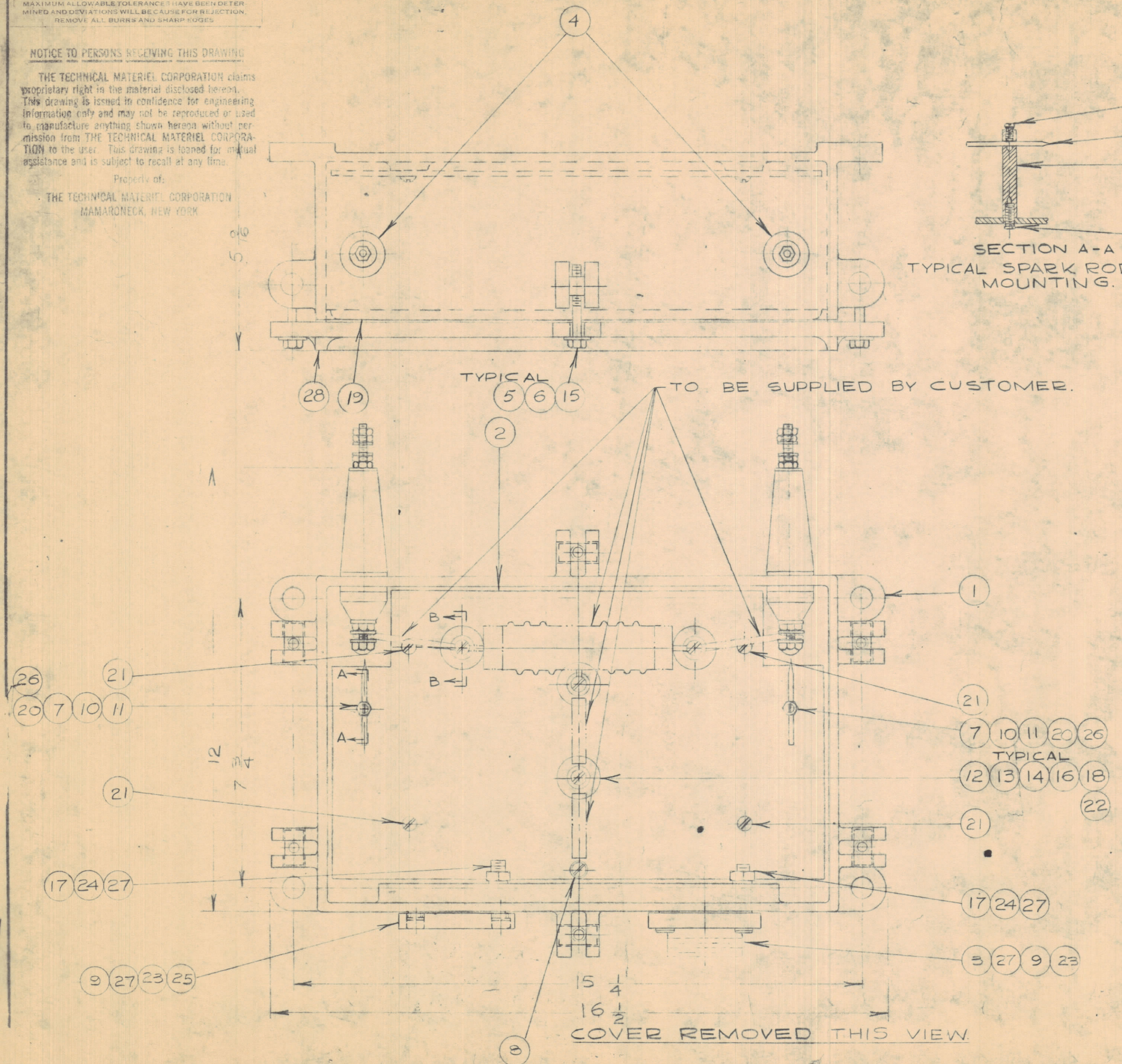
MAXIMUM ALLOWABLE TOLERANCES HAVE BEEN DETERMINED AND DEVIATIONS WILL BE CAUSE FOR REJECTION. REMOVE ALL BURRS AND SHARP EDGES.

**NOTICE TO PERSONS RECEIVING THIS DRAWING**

THE TECHNICAL MATERIEL CORPORATION claims proprietary right in the material disclosed hereon. This drawing is issued in confidence for engineering information only and may not be reproduced or used to manufacture anything shown hereon without permission from THE TECHNICAL MATERIEL CORPORATION to the user. This drawing is loaned for mutual assistance and is subject to recall at any time.

Property of:

THE TECHNICAL MATERIEL CORPORATION  
MAMARONECK, NEW YORK



A10242

1	28	PM114-B	COVER
10	27	LWS25MRN	LOCKWASHER
2	26	SCBS0632BN6	SCREW
1	25	PM10067	BLANKING PLATE
2	24	NT2520BN14	NUT
2	23	GA104	GASKET
8	22	FW1032LBN	WASHER
4	21	SCBS1032BN5	SCREW
2	20	LWS06MRN	LOCK WASHER
1	19	GA107	GASKET
4	18	WA109-56	WASHER
2	17	SC10002-24	SCREW
4	16	LW110MRN	LOCKWASHER
6	15	FW25M55	WASHER
4	14	NS10004	STAND-OFF POST
3	13	SCBS1032BN6	SCREW
4	12	LWE10MRN	LOCKWASHER
2	11	PM103-B	SPARK ROD
2	10	SCBS0632BN6	SCREW
6	9	SC10002-10	SCREW
1	8	A10238	GROUND POST ASS'Y
2	7	PM10064	SPARK ROD HOLDER
6	6	SC108-9	BOLT HEX. HD.
6	5	PM100-B	PIN COVER BOLT
2	4	A102 B	INSULATOR ASS'Y
1	3	PM107-F	FLANGE
1	2	MS10378	PLATE
1	1	MS10376	CASE

CHANGED FROM	DATE	CH. NO.	DRAFTS	CHECKER	ENG. APP.
TOLERANCES					
SCALE: 1:2					
DRILL, PUNCH, COMMERCIAL STOCK SIZES AND MANUFACTURERS TOLERANCES ARE NOT INCLUDED.					

HLC-5 5T1078 NOV. 24/59  
 MODEL PROJECT NO. ASS'Y. NO. DATE  
 USED ON FINISH & SPEC. NO.

REQ.	ITEM	PART NO.	DESCRIPTION	SYMBOL
TMC (Canada) LIMITED OTTAWA ONTARIO				
ASS'Y OF HLC-5				
JPC				
DRAWN: <i>DCM</i> ELCC. DES. APP. MECH. DES. APP. <i>109</i>				
CHECKED: FINAL APPROVAL				
A10242				