

IF IT IS FOUND DESIRABLE TO CHANGE ANY TOLERANCE OR OTHER DETAIL SPECIFIED ON THIS DRAWING NOTIFY THE PURCHASER PROMPTLY.

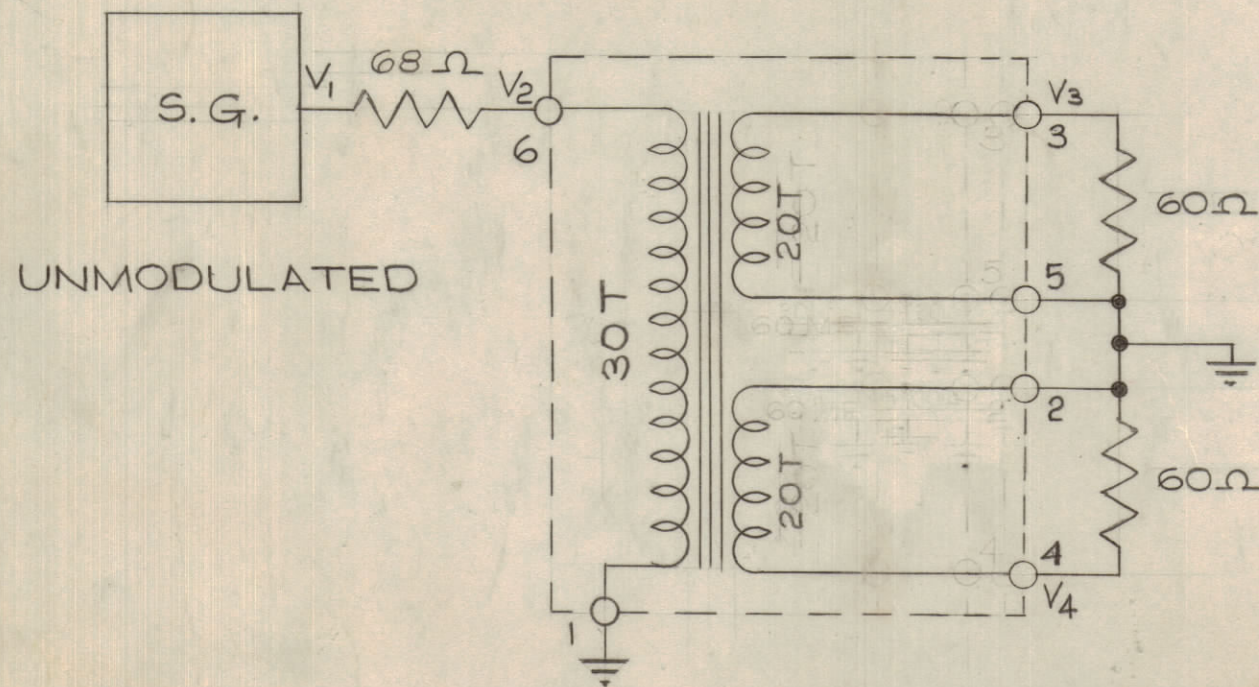
MAXIMUM ALLOWABLE TOLERANCES HAVE BEEN DETERMINED AND DEVIATIONS WILL BE CAUSE FOR REJECTION. REMOVE ALL BURRS AND SHARP EDGES

CONFIDENTIAL

NOTICE TO PERSONS RECEIVING THIS DRAWING

THE TECHNICAL MATERIEL CORPORATION claims proprietary right in the material disclosed hereon. This drawing is issued in confidence for engineering information only and may not be reproduced or used to manufacture anything shown hereon without permission from THE TECHNICAL MATERIEL CORPORATION to the user. This drawing is loaned for mutual assistance and is subject to recall at any time.

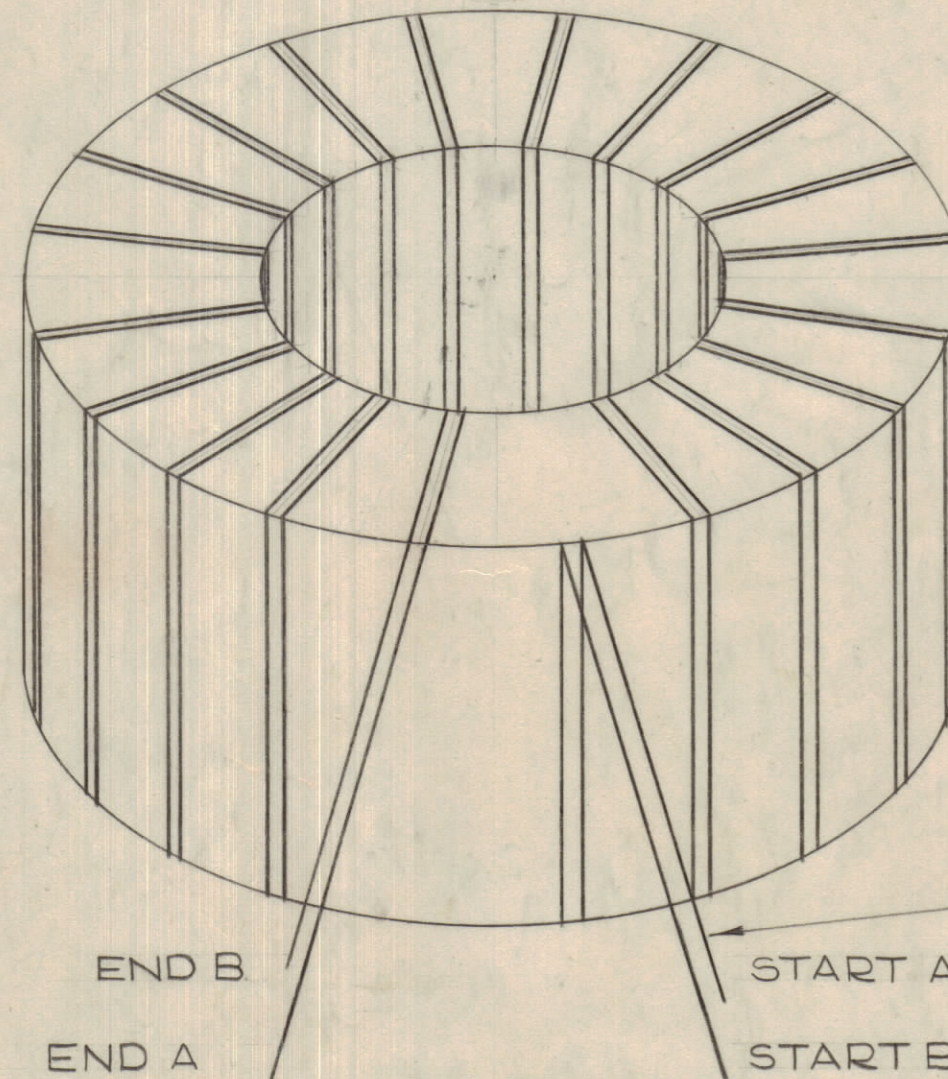
Property of:
THE TECHNICAL MATERIEL CORPORATION
MAMARONECK, NEW YORK



UNMODULATED

FREQ.	V ₁	V ₂	V ₃	V ₄	MAX. DIFF. (V ₃ /V ₄)
.1 MC	1	.5 ± .02	.33 ± .03	.33 ± .03	± .01
1.0 MC	1	.5 ± .01	.33 ± .01	.33 ± .01	± .005
2 MC	1	.5 ± .01	.33 ± .01	.33 ± .01	± .005

MEASURED WITH VTVM MODEL 410B HEWLETT PACKARD OR EQU.



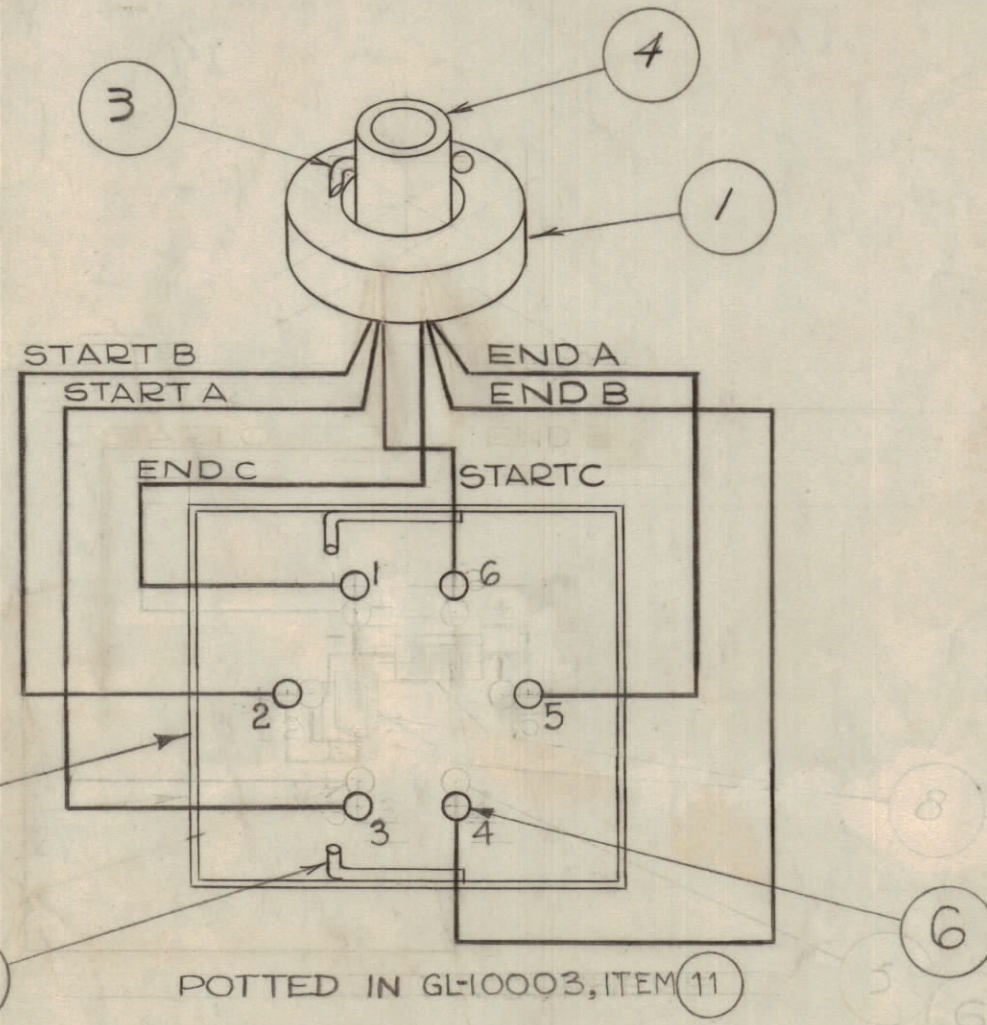
STEP 1:

BIFILAR WINDING (2 WIRES SIDE BY SIDE)
2X20 TURNS #28 HEAVY "SOLDEREZE"
WIRE, EVENLY DISTRIBUTED OVER CORE.
SECURE WITH ITEM 12.

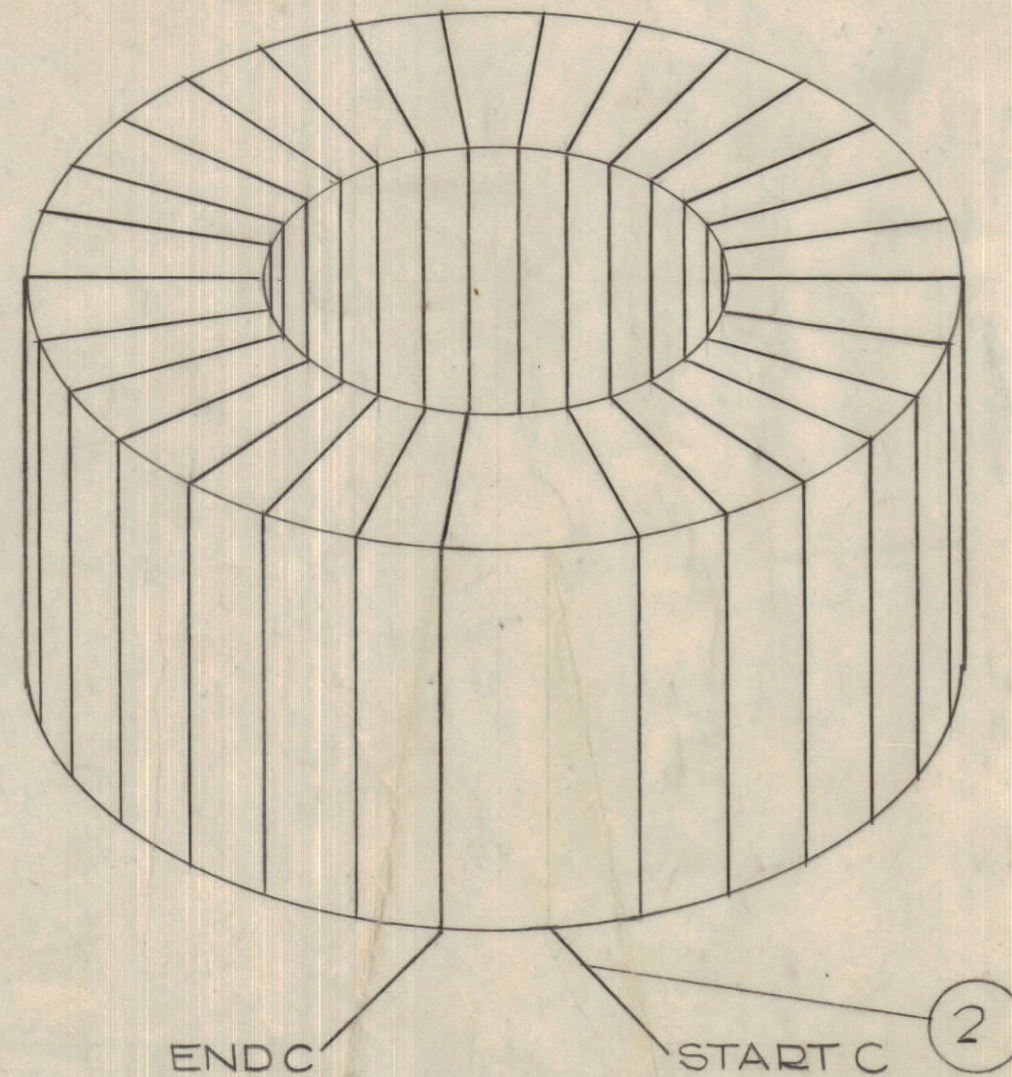
NOT TO BE RELEASED
W/O AUTHORIZATION

AUTH. BY: _____
DATE: _____

A-10294 G



P/O ITEM 9



STEP 2:

1X30 TURNS #28 HEAVY "SOLDEREZE"
WIRE, EVENLY DISTRIBUTED OVER CORE.
COAT WINDINGS WITH ITEM 12.

X	13	B5100	SOLDER, TIN, ALY
X	12	GL-10001	CEMENT
X	11	GL-10003	POTTING COMPOUND
	10		DELETED
1	9	BX-203	CAN AND COVERS
4	8	DELETED	CAPACITOR
1	7	MS10259	DELETED
6	6	TE110-2	SOLDER LUG
8	5	DELETED	DELETED
1	4	CF10014	COIL FORM
2	3	MS10259	STABILISER
A/R	2	WI-10002-2	WIRE - #28 HEAVY "SOLDEREZE"
1	1	CI-10001-3	CORE - GRADE 3C

REQ.	ITEM	PART NO.	DESCRIPTION	SYMBOL
TMC (Canada) LIMITED OTTAWA ONTARIO				
TRANSFORMER				
TR 086				
TYPE & TEMPER		DCM	MECH. DES. APP.	
HEAT TREAT. SPEC.		FINAL APPROVAL		
A-10294 G				

FINISH

- 1- SOLDER COVERS TO CASE WITH IT. 13.
- 2- PAINT CASE AS FOLLOWS:
S114- ZINC CHROMATE PRIMER
S115- SMOOTH GRAY ENAMEL

ISSUE	ITEM	CHANGED FROM	DATE	CN. NO.	DRAFTS	CHECKER	ENG. APP.
G		DELETED ITEM 8	12-7-66	17366	RME	JPC	
F	1	IT 13, FINISH NOTE ADDED	2/27/65	15418	JPC		
E	1	POLARITY OF ITEM 8, REVERSED	11/6/64	10727	JPC		
D	4	CLASSIFICATION DELETED					
	3	SCHEMATIC NOTES CORRECTED					
	2	ITEM 9 WAS BX-100-85	3-7-63	8405	RC		
	1	ITEMS 5, 7, 10, DELETED, 11, 12 ADDED					

DA-101	CE-5107	APR. 14/60
MODEL	PROJECT NO.	DATE
USED ON		