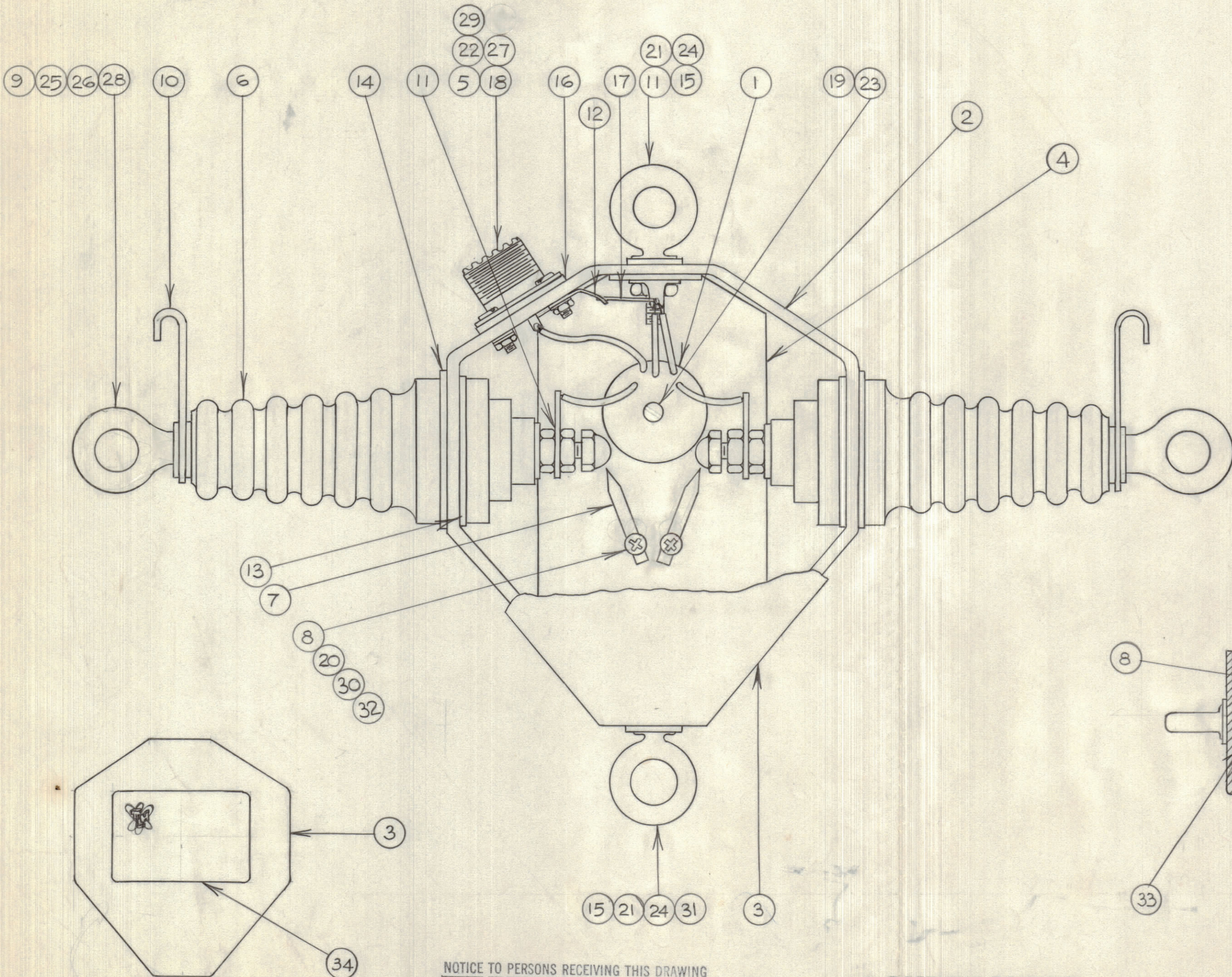


IF IT IS FOUND DESIRABLE TO CHANGE ANY TOLERANCE OR OTHER DETAIL SPECIFIED ON THIS DRAWING NOTIFY THE PURCHASER PROMPTLY.		DIMENSIONS IN INCHES UNLESS OTHERWISE SPECIFIED					
MAXIMUM ALLOWABLE TOLERANCES HAVE BEEN DETERMINED AND DEVIATIONS WILL BE CAUSE FOR REJECTION. REMOVE ALL BURRS AND SHARP EDGES.							
ISSUE	ITEM	CHANGED FROM	DATE	CN. NO.	DRAFTS	CHECKER	ENG. APP.
A	1	HDWR UPDATED & STANDARDIZED	6.12.63	9867			
	2	ITEM (9) WAS PM-22 B					
B	4	SUPERSEDED NOTE ADDED	6.17.64	11559	A.M.		

REQ.	ITEM	PART NO.	DESCRIPTION	SYMBOL
1	1	TR-091	Transformer: R.F., 200 B/50 U	
1	2	PM-232	Case: fibreglass	
1	3	PM-231	Cover: fibreglass	
1	4	MS-10541	Plate: mounting	
1	5	SO-239-A	Receptacle: U.H.F.	
2	6	NS-107	Insulator: ceramic	
2	7	PM-229	Spark Rod	
2	8	PM-10061	Spark Rod Post	
2	9	SC-149	Bolt: eye, long shank	
2	10	MS-347	Service Hook	
3	11	TE-104-5	Terminal: locking	
1	12	TE-104-1	Terminal: locking	
2	13	-----	Gasket: cork, large, round	
2	14	GA-115	Gasket: neoprene, large, round	
2	15	GA-114	Gasket: neoprene, small, round	
1	16	GA-106	Gasket: neoprene, square	
2"	17	WL-100-4	Wire: bus, 16 g.	
4	18	SCBP0440BN7	Screw: 4-40, 7/16"	
1	19	SCBP0440BN14	Screw: 4-40, 7/8"	
4	20	SCBP0632BN6	Screw: 6-32, 3/8"	
2	21	SC-116	Bolt: eye, short shank	
4	22	NTH0440BN8	Nut: 4-40, 1/4"	
1	23	NT-129-440-4	Nut: swage	
2	24	NTH2520BN14	Nut: 25-20, 7/16"	
4	25	-----	Nut: 25-20, 7/16", thin	
2	26	NTC2520BN14	Nut: cap, 25-20, 7/16	
4	27	FW04LBN	Washer: flat	
6	28	FW25LBN	Washer: flat	
3	29	LWI04MRN	Washer: locking, internal teeth	
2	30	LWI06MRN	Washer: locking, internal teeth	
1	31	LWI25MRN	Washer: locking, internal teeth	
2	32	LWS06MRN	Washer: locking, spring, single turn.	
AR	33	GL-10002	Potting Compound: Laminac	
1	34	NP-222-1	Nameplate: identification, adhesive	
AR	35	GL-101-1	Pliobond: cement	

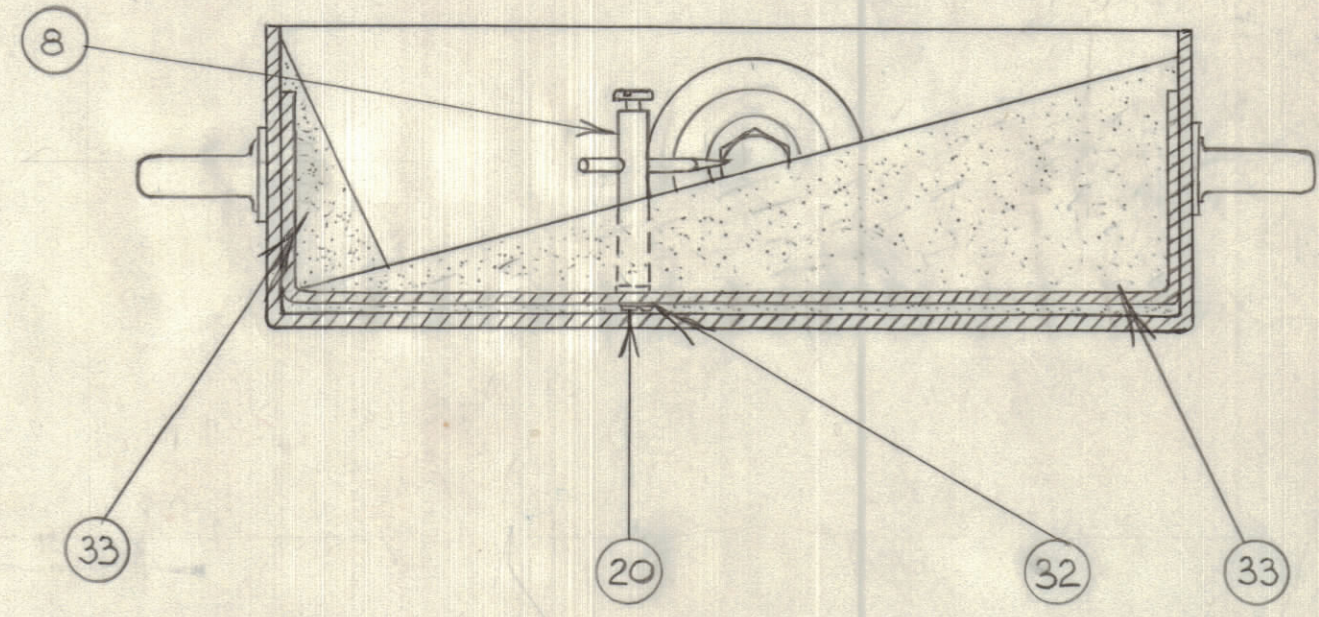


NOTE: 1. ATTACH ITEM 3 TO ITEM 2 WITH ITEM 33

NOTE: 2. ATTACH ITEM 34 TO ITEM 3 WITH ITEM 35.

A10326 B

CASE POTTED AS SHOWN IN DETAIL BELOW.



**NOTICE TO PERSONS RECEIVING THIS DRAWING**

THE TECHNICAL MATERIEL CORPORATION claims proprietary right in the material disclosed hereon. This drawing is issued in confidence for engineering information only and may not be reproduced or used to manufacture anything shown hereon without permission from THE TECHNICAL MATERIEL CORPORATION to the user. This drawing is loaned for mutual assistance and is subject to recall at any time.

Property of:  
THE TECHNICAL MATERIEL CORPORATION  
MAMARONECK, NEW YORK

**SUPERSEDED** B

DIRECTLY REPLACED BY A1089-14

TOLERANCES		SCALE: N.T.S.
ALL OTHERS	DEC. DIM. ± FRAC. DIM. ± ANGULAR DIM. ±	DRILL, PUNCH, COMMERCIAL STOCK SIZES AND MANUFACTURERS TOLERANCES ARE NOT INCLUDED.

DAC-14	E2160-1	June 20/61
MODEL	PROJECT NO.	ASS'Y. NO.
USED ON		

STOCK SIZE		TMC (Canada) LIMITED OTTAWA ONTARIO	
MATERIAL		ASSEMBLY OF DAC-14	
TYPE & TEMPER		JPC DRAWN	R.W. Thomas MECH. DES. APP.
HEAT TREAT. SPEC.		Checked	FINAL APPROVAL
FINISH & SPEC. NO.		A10326 B	