

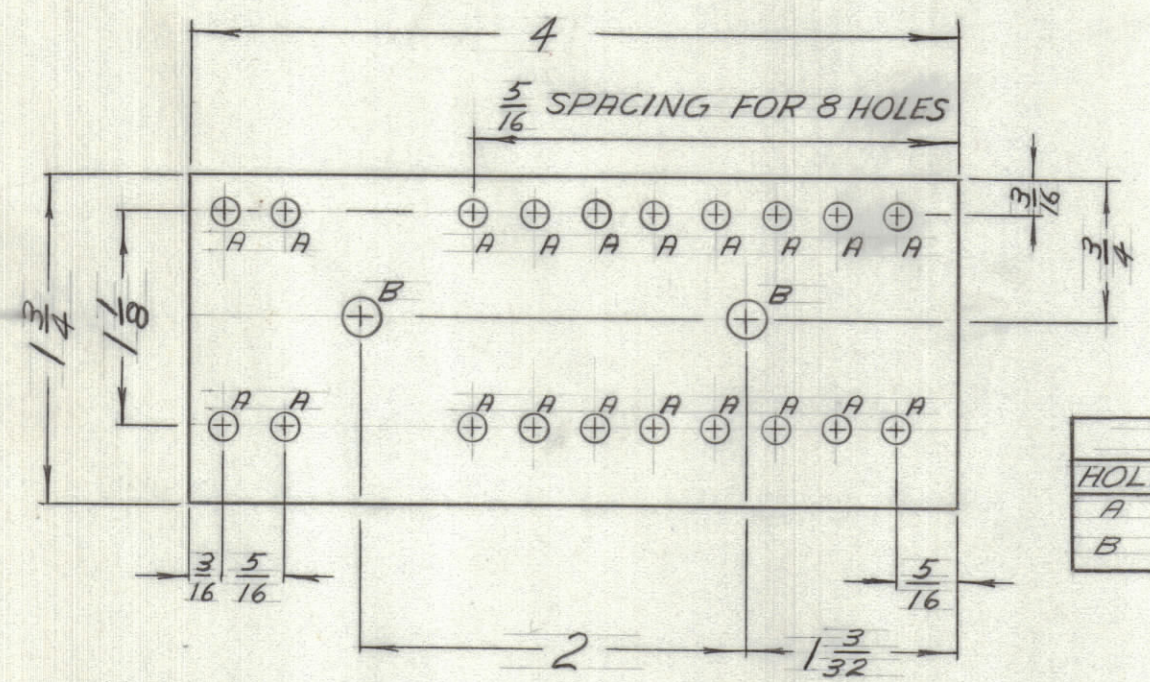
IF IT IS FOUND DESIRABLE TO CHANGE ANY TOLERANCE OR OTHER DETAIL SPECIFIED ON THIS DRAWING NOTIFY THE PURCHASER PROMPTLY.

MAXIMUM ALLOWABLE TOLERANCES HAVE BEEN DETERMINED AND DEVIATIONS WILL BE CAUSE FOR REJECTION. REMOVE ALL BURRS AND SHARP EDGES.

DIMENSIONS IN INCHES UNLESS OTHERWISE SPECIFIED

ISSUE	ITEM	CHANGED FROM	DATE	CN. NO.	DRAFTS	CHECKER	ENG. APP.

REQ.	ITEM	PART NO.	DESCRIPTION	SYMBOL
20	1	TE-10003-1	TERMINAL, SOLDER	
2	2	TE-108-13	STAND-OFF, RIVET TYPE	
3	3	IN 478	DIODE	D1, D2, D4
3	4	RC206F224K	RESISTOR, FIXED COMPOS'N	R5, R6, R7
1	5	RC326F273K	RESISTOR, FIXED COMPOS'N	R9
2	6	CC-10002-1	CAPACITOR, DISC, CERAMIC	C1, C3
1	7	CC-100-15	CAPACITOR, DISC, CERAMIC	C2
1	8	CN-10005-3	CAPACITOR, PAPER	C4
R/R	9	WL-100-7	WIRE #22 TINNED BUSS	
R/R	10	PX-100-1-.034	INSULATION, SLEEVING, BLACK	
R/R	11	PX-100-2-.034	INSULATION, SLEEVING, BLACK	
R/R	12	PX-100-5-.034	INSULATION, SLEEVING, BLACK	
R/R	13	PX-100-6-.034	INSULATION, SLEEVING, BLUE	

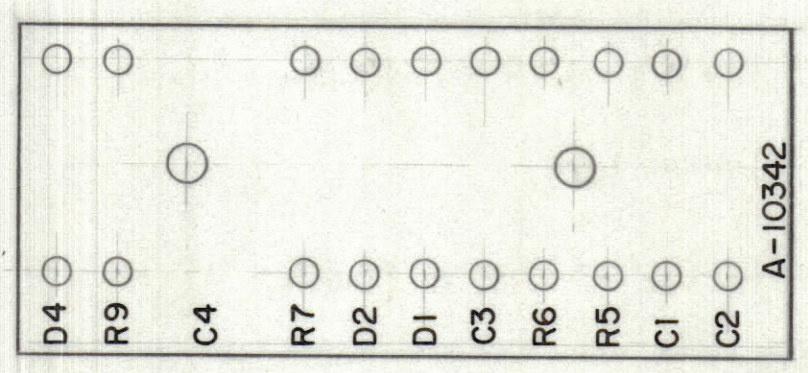


LEGEND		
HOLE	DESC.	REQ.
A	.125	20
B	.189	2

MATERIAL: 1/8" THK. XXXP PHENOLIC

TOL: ± 1/64

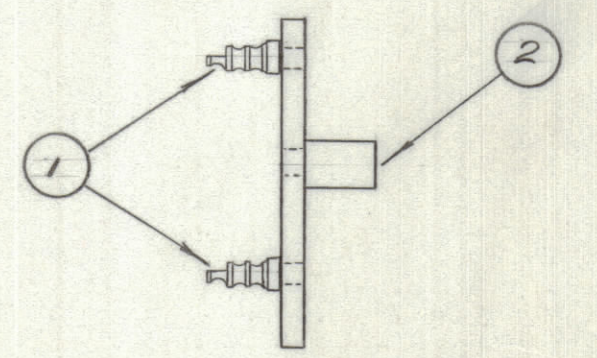
A-10342-1



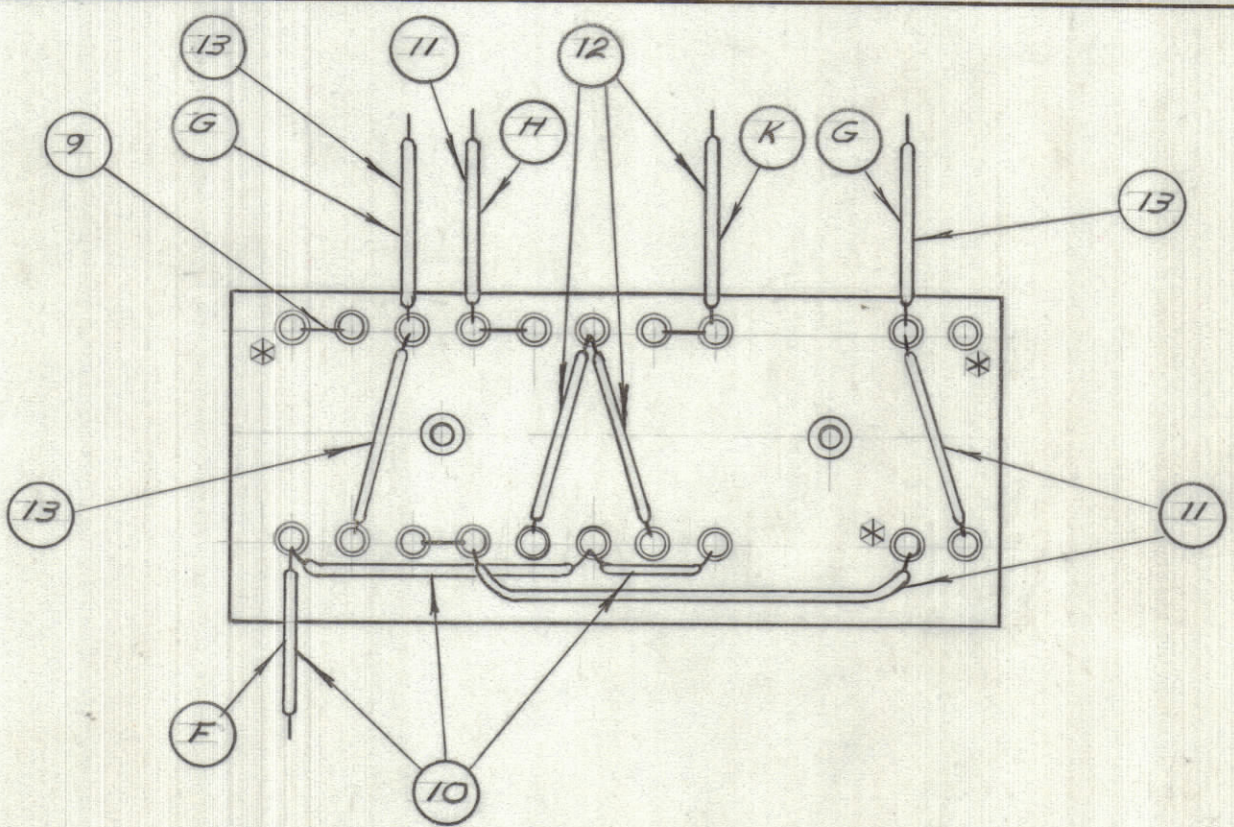
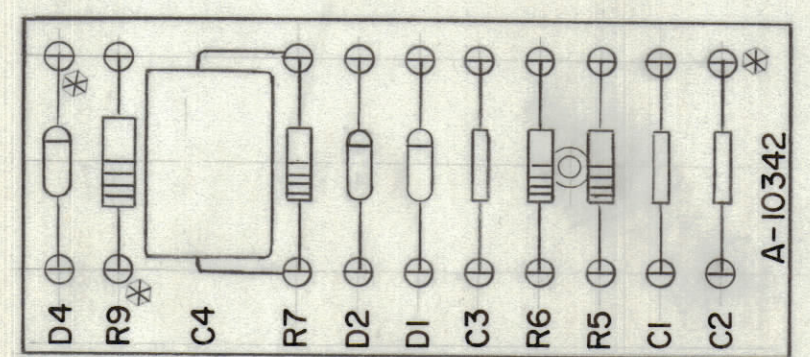
LETTERING: 1/8 INCH HIGH, BLACK LUSTERLESS GOTHIC  
MARKING PROCESS: AS PER TMC SPEC. S-727

FUNGUS PROOFING PER  
TMC SPECIFICATION S-113

A-10342-2



A-10342-3



INSULATED SLEEVING			
WIRE	REQ.	LENGTH	ITEM NO.
F	1	2 1/2	10
G	2	2 1/2	13
H	1	2	11
K	1	2 3/8	12

NOTES:

- BAND ON DIODES USED TO INDICATE END OF DIODE WITH RED MARKING.
- WIRE OF LEADS TO EXTEND 3/4 BEYOND INSULATION.
- \* LEAVE UNSOLDERED

TOLERANCES		SCALE:
ALL OTHERS	DEC. DIM. ± FRAC. DIM. ± ANGULAR DIM. ±	DRILL, PUNCH, COMMERCIAL STOCK SIZES AND MANUFACTURERS TOLERANCES ARE NOT INCLUDED.

MID 3	PROJECT NO.	ASS'Y. NO.	DATE
			6-12-63

STOCK SIZE		TMC (Canada) LIMITED OTTAWA ONTARIO	
MATERIAL		TERMINAL BOARD	
WEIGHT PER PC.		NO. 1	
TYPE & TEMPER		RD	L
HEAT TREAT. SPEC.		DRAWN	ELEC. DES. APP. / MECH. DES. APP.
FINISH & SPEC. NO.		CHECKED	FINAL APPROVAL
		A-10342	