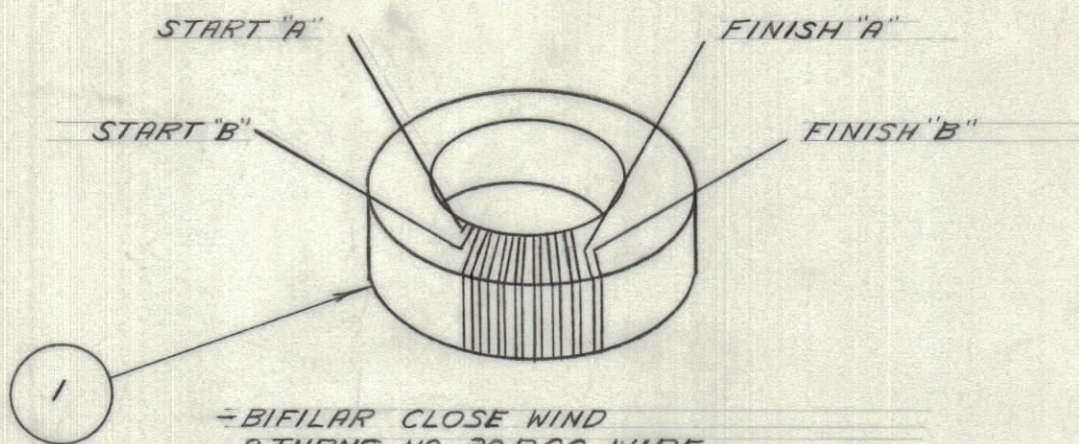


IF IT IS FOUND DESIRABLE TO CHANGE ANY TOLERANCE OR OTHER DETAIL SPECIFIED ON THIS DRAWING NOTIFY THE PURCHASER PROMPTLY.		DIMENSIONS IN INCHES UNLESS OTHERWISE SPECIFIED					
MAXIMUM ALLOWABLE TOLERANCES HAVE BEEN DETERMINED AND DEVIATIONS WILL BE CAUSE FOR REJECTION. REMOVE ALL BURRS AND SHARP EDGES.							
ISSUE	ITEM	CHANGED FROM	DATE	CN. NO.	DRAFTS	CHECKER	ENG. APP.
0		ORIGINAL RELEASE FOR PRODUCTION	4/15/64	0	A.M.		

REQ.	ITEM	PART NO.	DESCRIPTION	SYMBOL
1	1	CI10001-3	CORE TRANSFORMER	
AR	2	WI10001-11	MAGNET WIRE D.C.C.	
2"	3	PX104-1-034	INSULATION SLEEVING	BLACK
2"	4	PX104-2-034	INSULATION SLEEVING	YELL.
2"	5	PX104-3-034	INSULATION SLEEVING	RED
2"	6	PX104-6-034	INSULATION SLEEVING	BLUE
AR	7	GL106	COMPOUND POTTING	
AR	8	GL10001	RADIO SERVICE CEMENT	

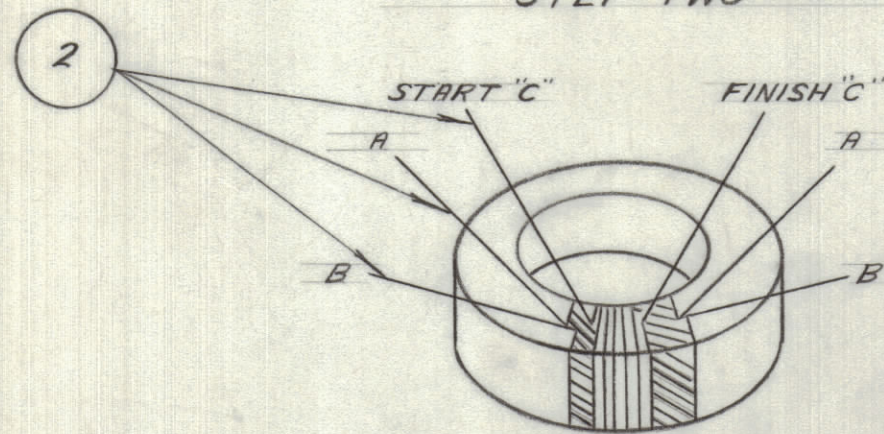
### WINDING

#### STEP ONE



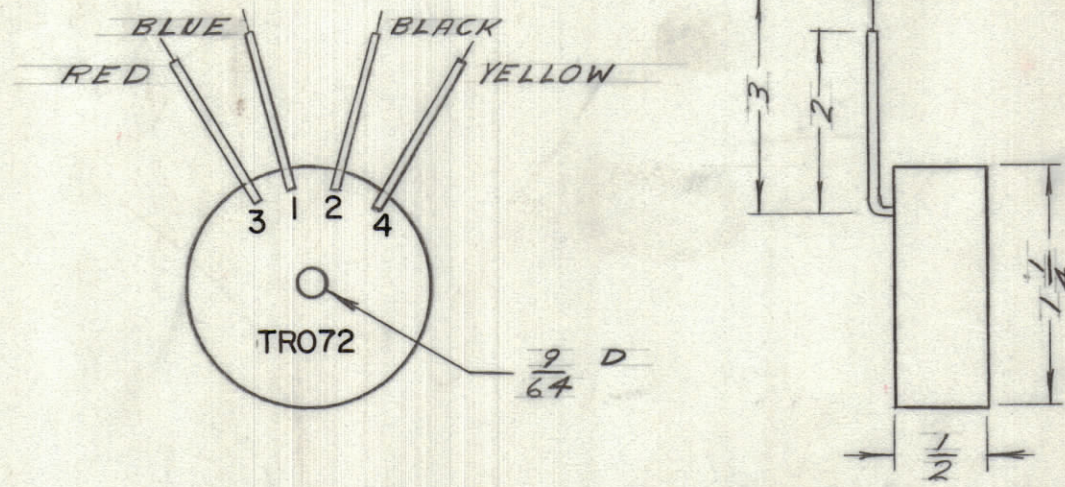
- BIFILAR CLOSE WIND
- 8 TURNS NO 30DCC WIRE
- COAT WINDING WITH RADIO CEMENT
- ALLOW CEMENT TO DRY
- LEADS 3" LONG

#### STEP TWO



- SINGLE WIRE CLOSE WIND
- 6 TURNS NO 30 D.C.C. CENTERED ON PREVIOUS WINDING & WOUND IN SAME DIRECTION
- COAT WINDING WITH RADIO CEMENT
- ALLOW CEMENT TO DRY.

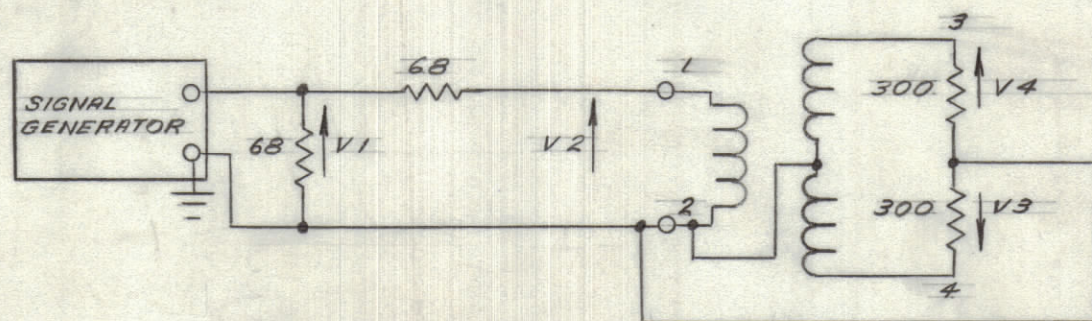
### STAMPING



LETTERING AS SHOWN

DIMENSIONS FOR REFERENCE ONLY

### ELECTRICAL TEST

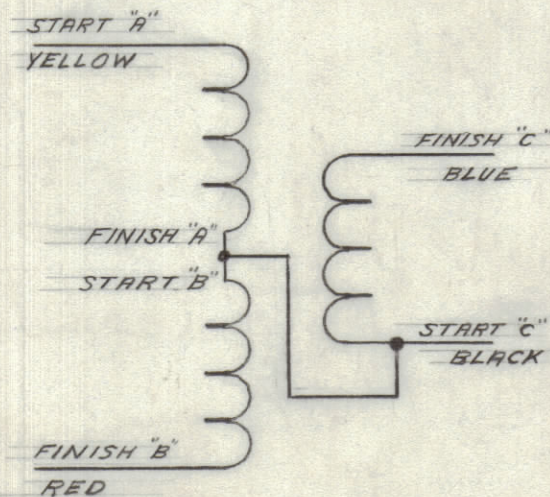
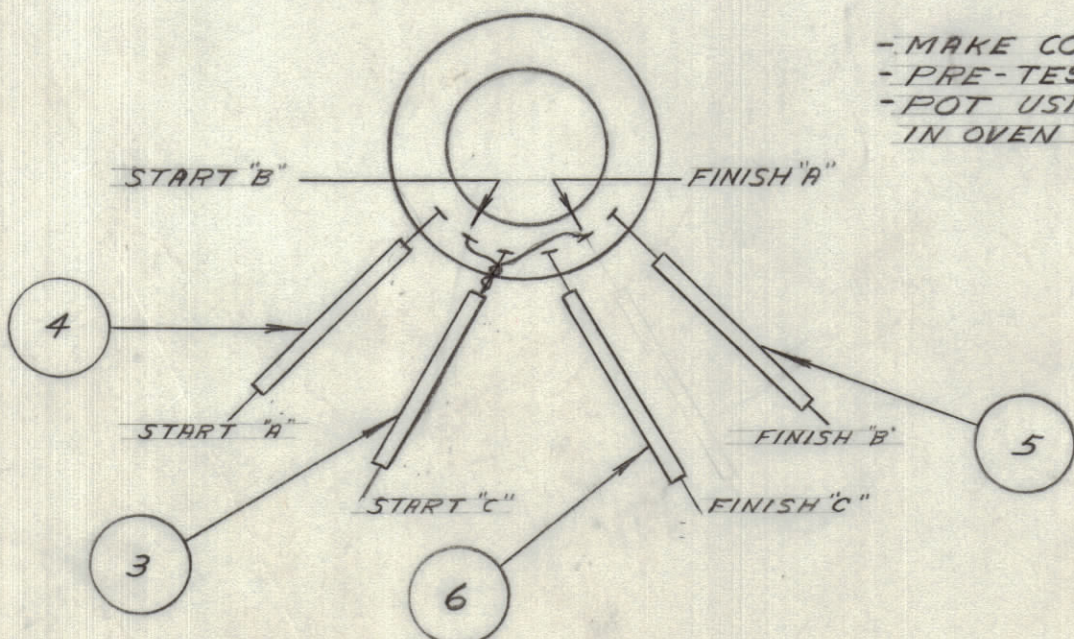


FREQ MC/S	RF VOLTS			
	V1	V2	V3	V4
2	1.0	0.5 ± .1	.64 ± .1	.64 ± .1
8	1.0	0.5 ± .1	.64 ± .1	.64 ± .1
16	1.0	0.5 ± .1	.64 ± .1	.64 ± .1
30	1.0	0.5 ± .1	.64 ± .1	.64 ± .1

READINGS TO BE TAKEN WITH A H.P. 410B V.T.V.M. OR EQUIVALENT

### POTTING

- MAKE CONNECTIONS AS SHOWN
- PRE-TEST TRANSFORMER BEFORE POTTING
- POT USING GL-106 AFTER DRYING TRANSF. IN OVEN 1/2 HOUR OR MORE



NOT TO BE RELEASED  
W/O AUTHORIZATION

AUTH. BY: \_\_\_\_\_  
DATE: \_\_\_\_\_

A103470

TOLERANCES		SCALE:
ALL OTHERS	DEC. DIM. ± FRAC. DIM. ± ANGULAR DIM. ±	DRILL, PUNCH, COMMERCIAL STOCK SIZES AND MANUFACTURERS TOLERANCES ARE NOT INCLUDED.

DAC-17			
MODEL	PROJECT NO.	ASS'Y. NO.	DATE

STOCK SIZE		TMC (Canada) LIMITED OTTAWA ONTARIO	
MATERIAL		ASSEMBLY OF R.F. TRANSFORMER TRO72	
WEIGHT PER PC.		RD	RD
TYPE & TEMPER.		DRWN	ELEC. DES. APP. MECH. DES. APP.
HEAT TREAT. SPEC.		CHECKED	FINAL APPROVAL
FINISH & SPEC. NO.		A103470	