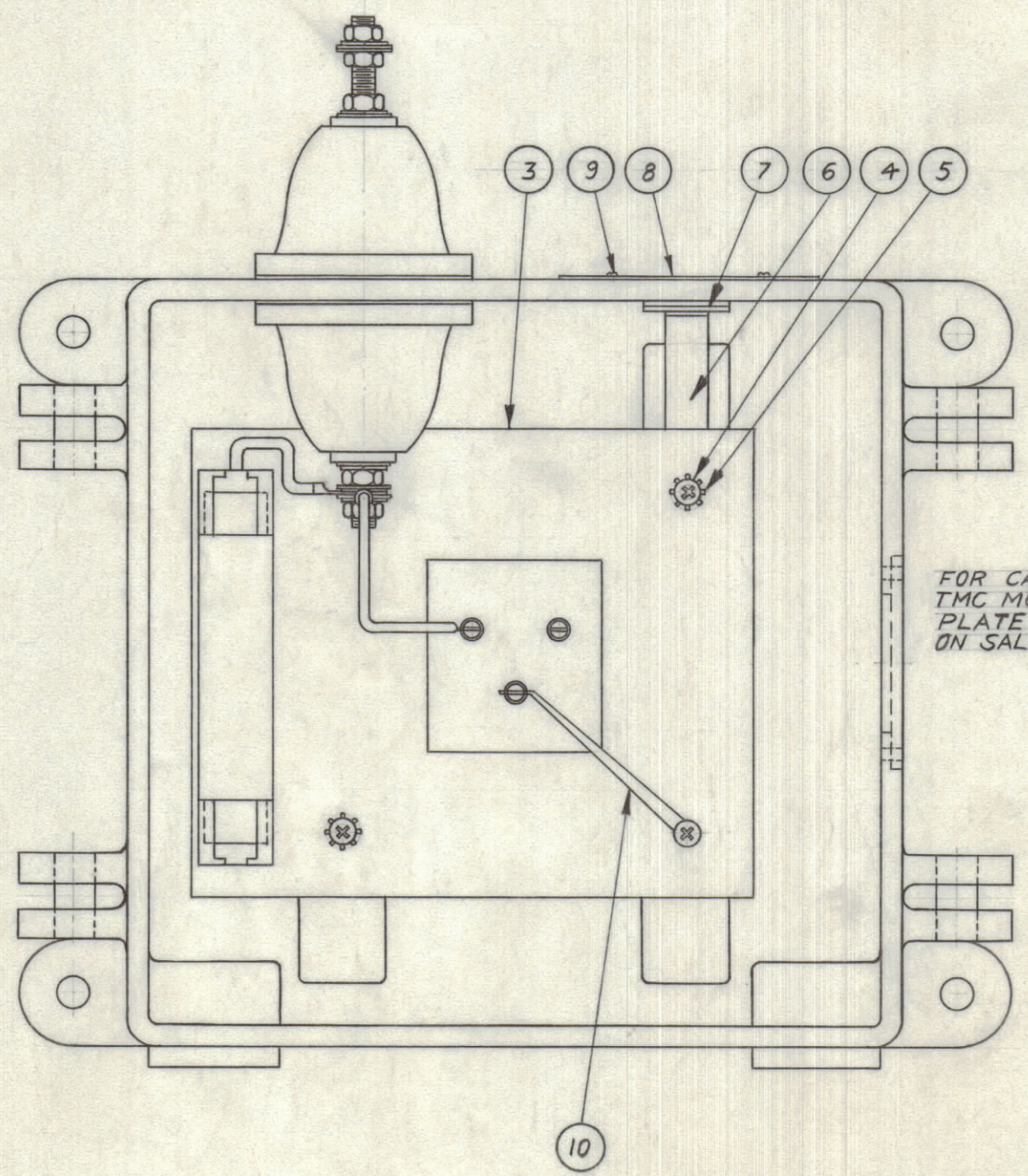
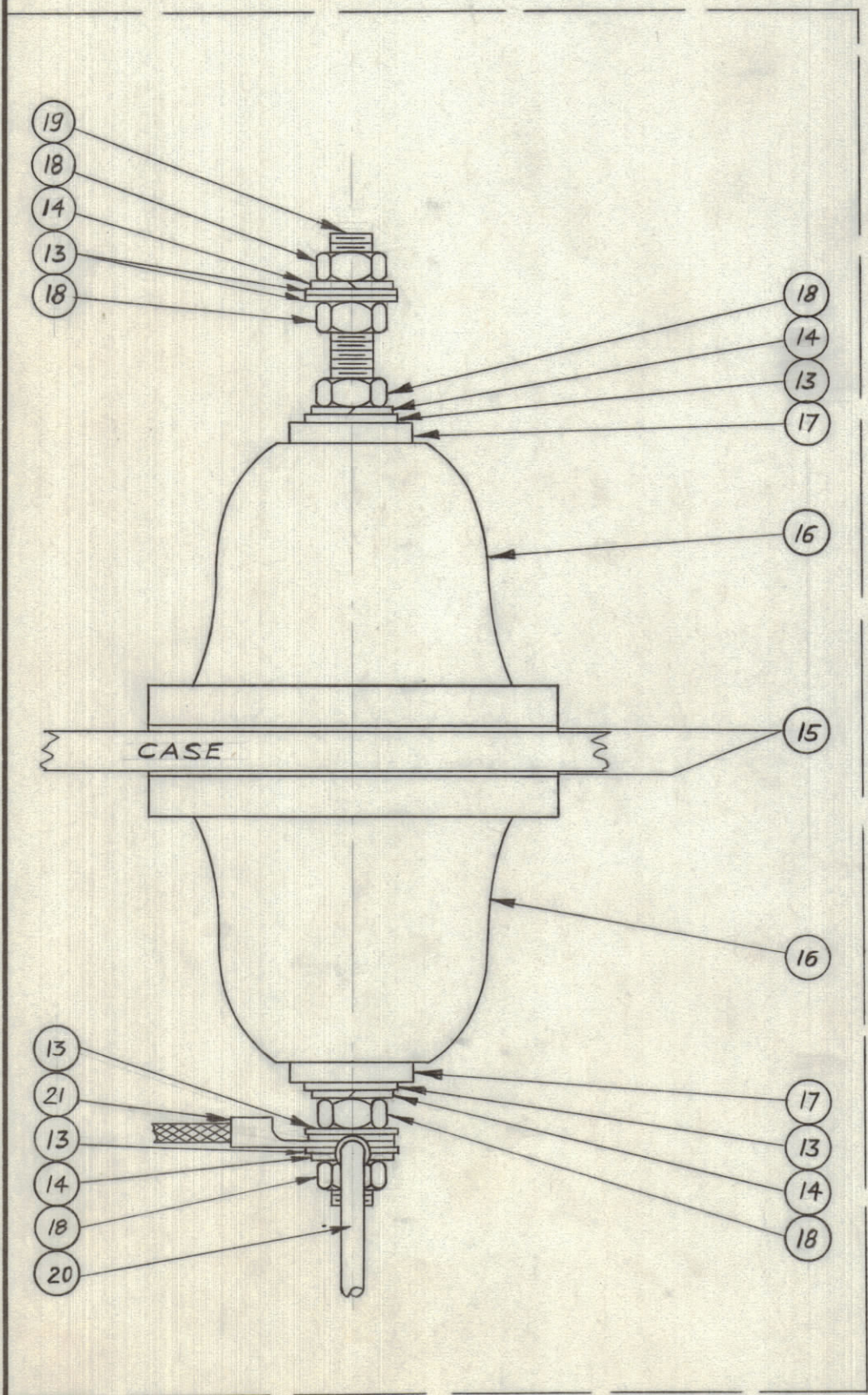
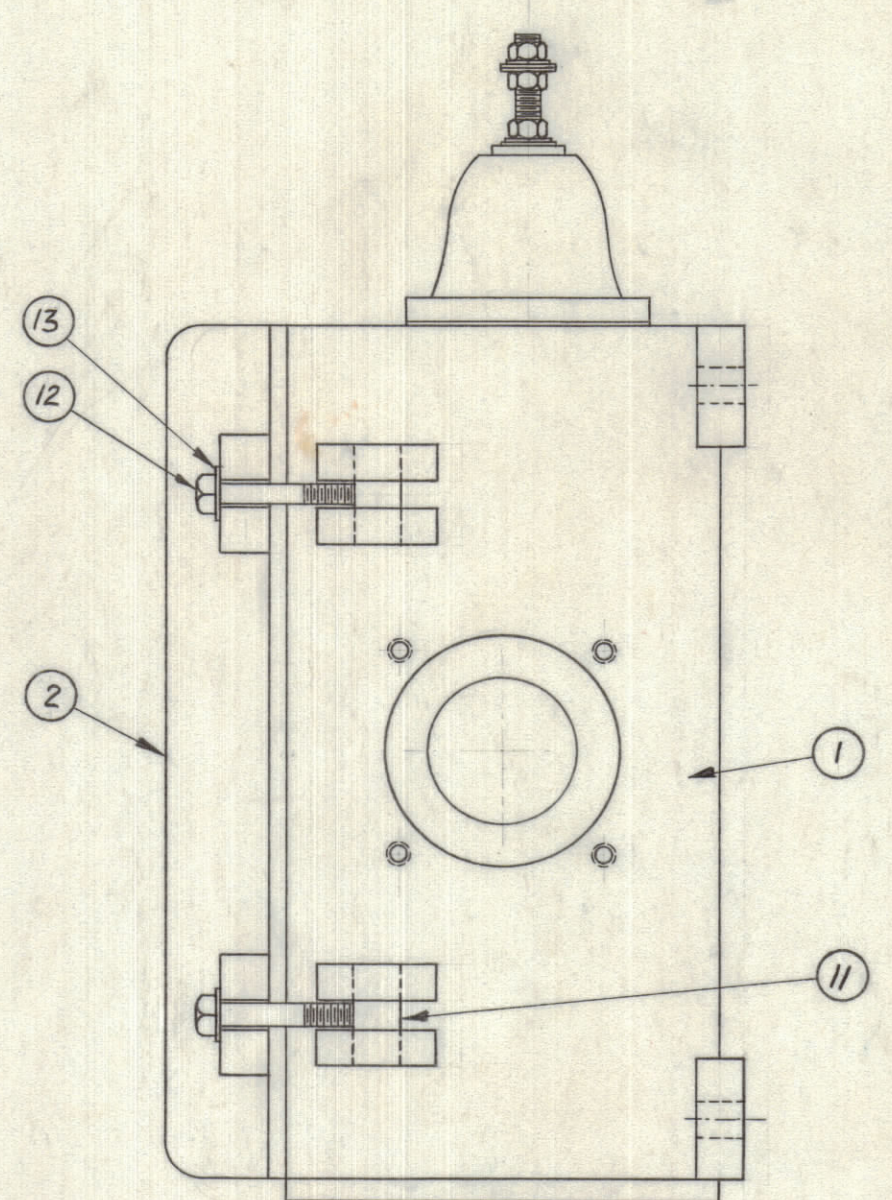
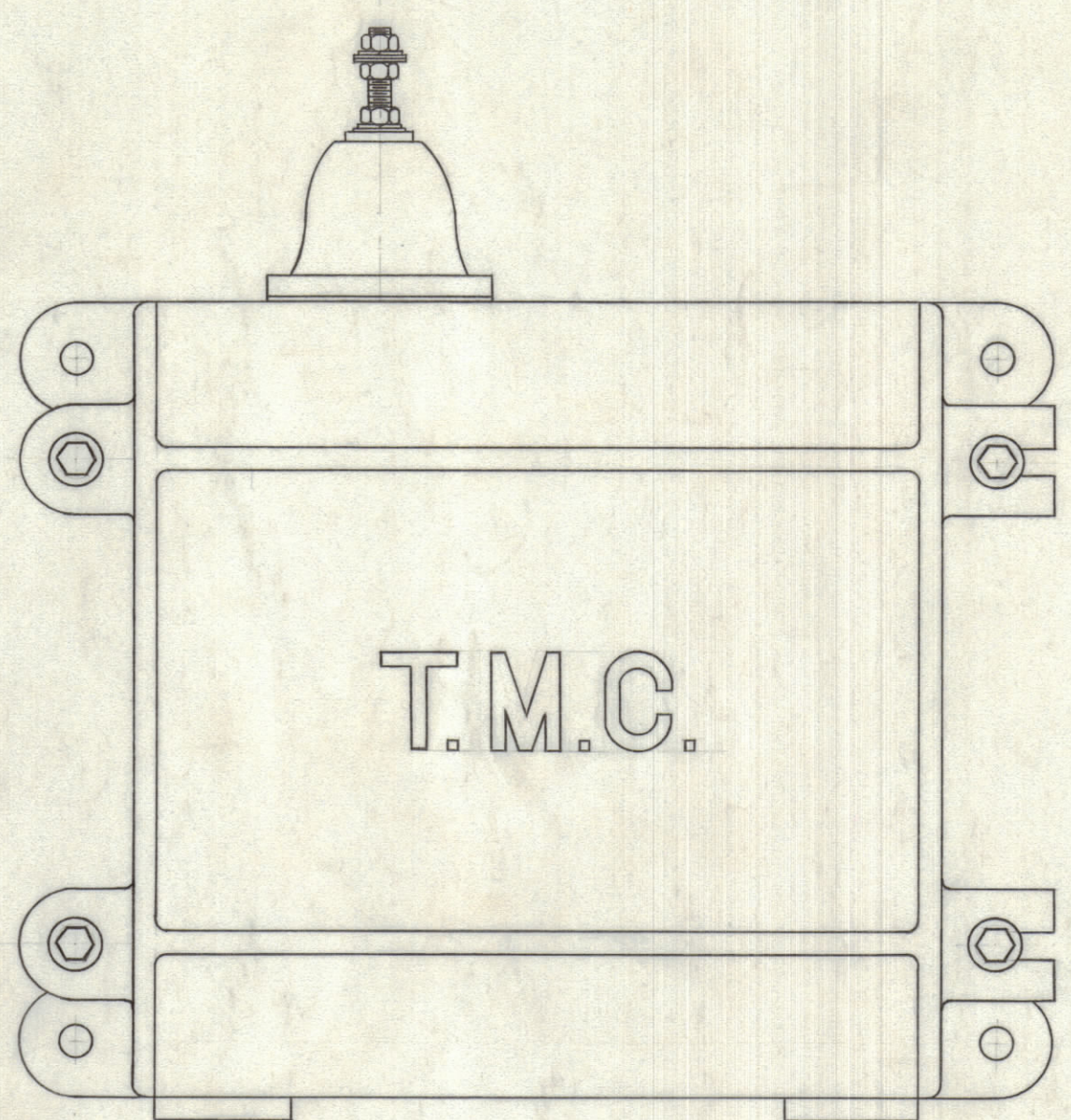


IF IT IS FOUND DESIRABLE TO CHANGE ANY TOLERANCE OR OTHER DETAIL SPECIFIED ON THIS DRAWING NOTIFY THE PURCHASER PROMPTLY.		DIMENSIONS IN INCHES UNLESS OTHERWISE SPECIFIED					
MAXIMUM ALLOWABLE TOLERANCES HAVE BEEN DETERMINED AND DEVIATIONS WILL BE CAUSE FOR REJECTION. REMOVE ALL BURRS AND SHARP EDGES.							
ISSUE	ITEM	CHANGED FROM	DATE	CN. NO.	DRAFTS	CHECKER	ENG. APP.
A		ARROW HEADS ADDED	28-7-66		RPL		

REQ.	ITEM	PART NO.	DESCRIPTION	SYMBOL
------	------	----------	-------------	--------



FOR CABLE ENTRY PROVISIONS, SEE TMC MODEL NO ES, OR MOUNTING PLATE CONNECTOR ASS'Y. AS SHOWN ON SALES ORDER.

A 10 361 A

1	21	CA409-23-2.00	CABLE ASS'Y.	
1	20	CA-10 425	CABLE CONNECTOR	
1	19	A-100	STUD, ASS'Y.	
5	18	NTH 2520 SS14	NUT, HEX	
2	17	RY-112	GLAND, MODIFIED	
2	16	NS-115	CAP, INSULATING	
2	15	GA-126	GASKET INNER	
4	14	LWS 25 MSS	LOCKWASHER, SPRING	
10	13	FW 25 HSS	WASHER, FLAT	
4	12	SC-108-9	BOLT, HEX	
4	11	PM-100	PIN COVER BOLT	
1	10	FP-144	CONNECTOR, GROUND	
4	9	SFB 0256AWA4	SCREW, SELF-TAP	
1	8	NP-10 129	NAMEPLATE	
2	7	AD-101-1/6	DESSICANT	
1	6	MS-933	HOLDER, DESSICANT	
4	5	LWE 08 MRN	WASHER, LOCK	
4	4	SCBP 0832 BN6	SCREW, MACHINING	
1	3	A 10 363	TRANSF. MNTG. PLATE ASS'Y	
1	2	A 10 362	COVER, ASS'Y.	
1	1	PM-717	CASE, MACHINING	
REQ.	ITEM	PART NO.	DESCRIPTION	SYMBOL

STOCK SIZE		TMC (Canada) LIMITED OTTAWA ONTARIO	
MATERIAL		CASE ASS'Y. VRA-11	
WEIGHT PER PC.		DRAWN: <i>Hwo.</i>	
TYPE & TEMPER		ELEC. DES. APP. <i>KH</i>	
HEAT TREAT. SPEC.		MECH. DES. APP. <i>raj</i>	
FINISH & SPEC. NO.		CHECKED: _____	
		FINAL APPROVAL	
		A 10 361 A	

TOLERANCES		SCALE: NTS.
ALL OTHERS	DEC. DIM. ± FRAC. DIM. ± ANGULAR DIM. ±	DRILL, PUNCH, COMMERCIAL STOCK SIZES AND MANUFACTURERS TOLERANCES ARE NOT INCLUDED.

VRA-11	026/65	1-6-65
MODEL	PROJECT NO.	DATE
USED ON		