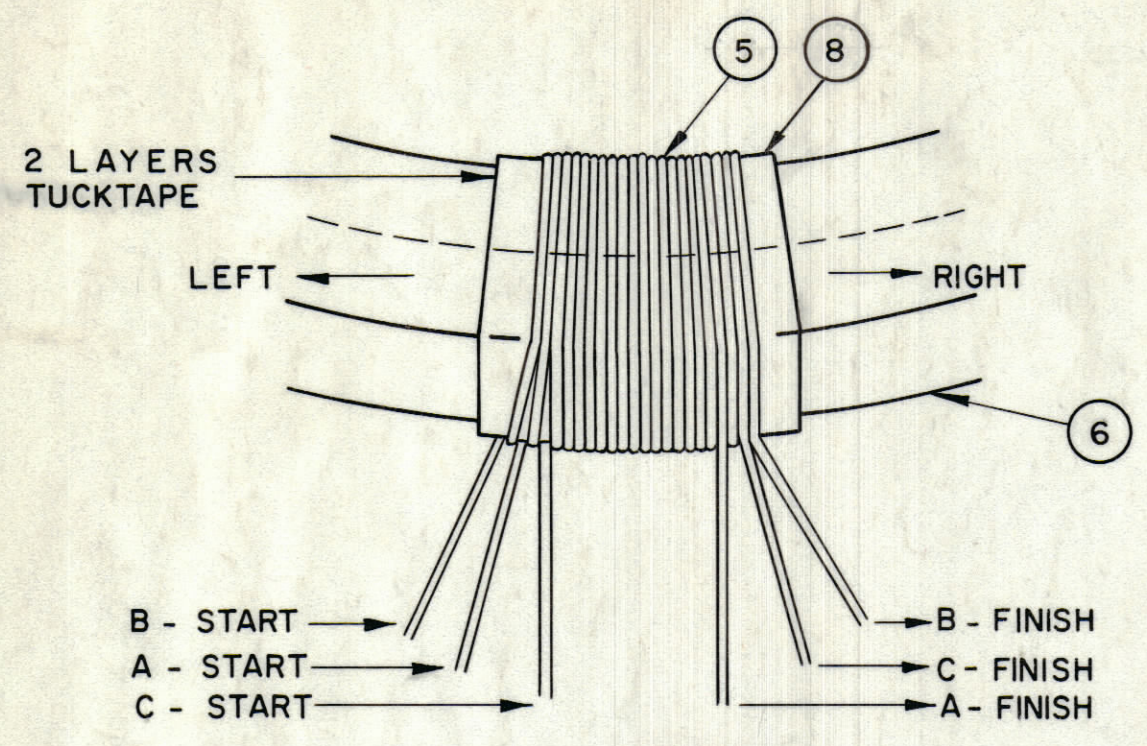
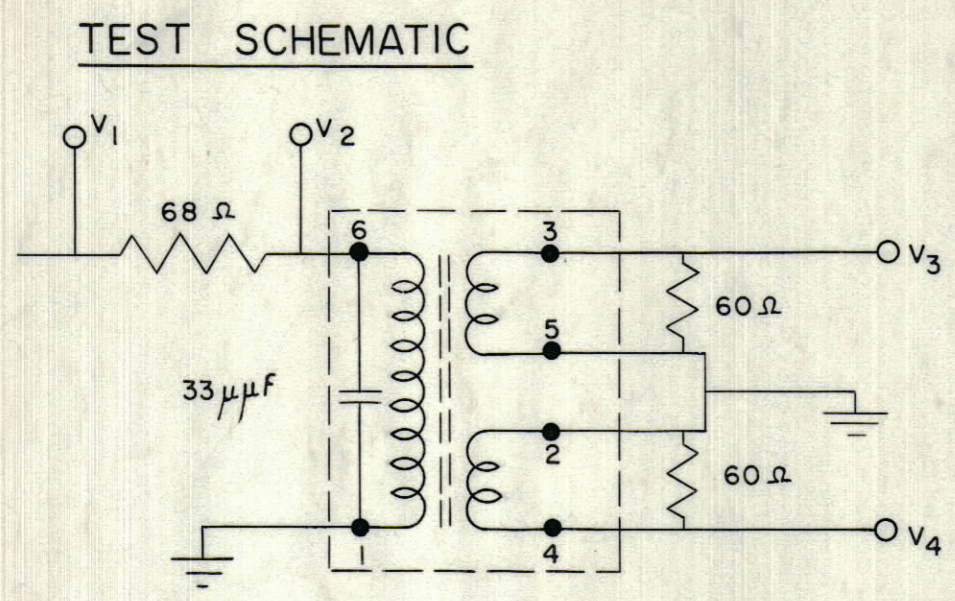


IF IT IS FOUND DESIRABLE TO CHANGE ANY TOLERANCE OR OTHER DETAIL SPECIFIED ON THIS DRAWING NOTIFY THE PURCHASER PROMPTLY.		DIMENSIONS IN INCHES UNLESS OTHERWISE SPECIFIED					
MAXIMUM ALLOWABLE TOLERANCES HAVE BEEN DETERMINED AND DEVIATIONS WILL BE CAUSE FOR REJECTION. REMOVE ALL BURRS AND SHARP EDGES.							
ISSUE	ITEM	CHANGED FROM	DATE	CN. NO.	DRAFTS	CHECKER	ENG. APP.
A		REV. AS PER CEMN.	OCT 10/67	300	RPL		

REQ.	ITEM	PART NO.	DESCRIPTION	SYMBOL
1	1	BX 10 016	CAN	
1	2	CC 10 003-3	CAPACITOR	
2	3	MS 10 259	STABILIZER	
1	4	CF 10 012	MANDREL	
AR	5	WI 10 002-2	WIRE	
1	6	CI 10 001-2	CORE	
AR	7	GL 10 003	ARALDITE, HOT POTTING	
AR	8	TA 10 001-1	TAPE, TUCK 3/8" WIDE	

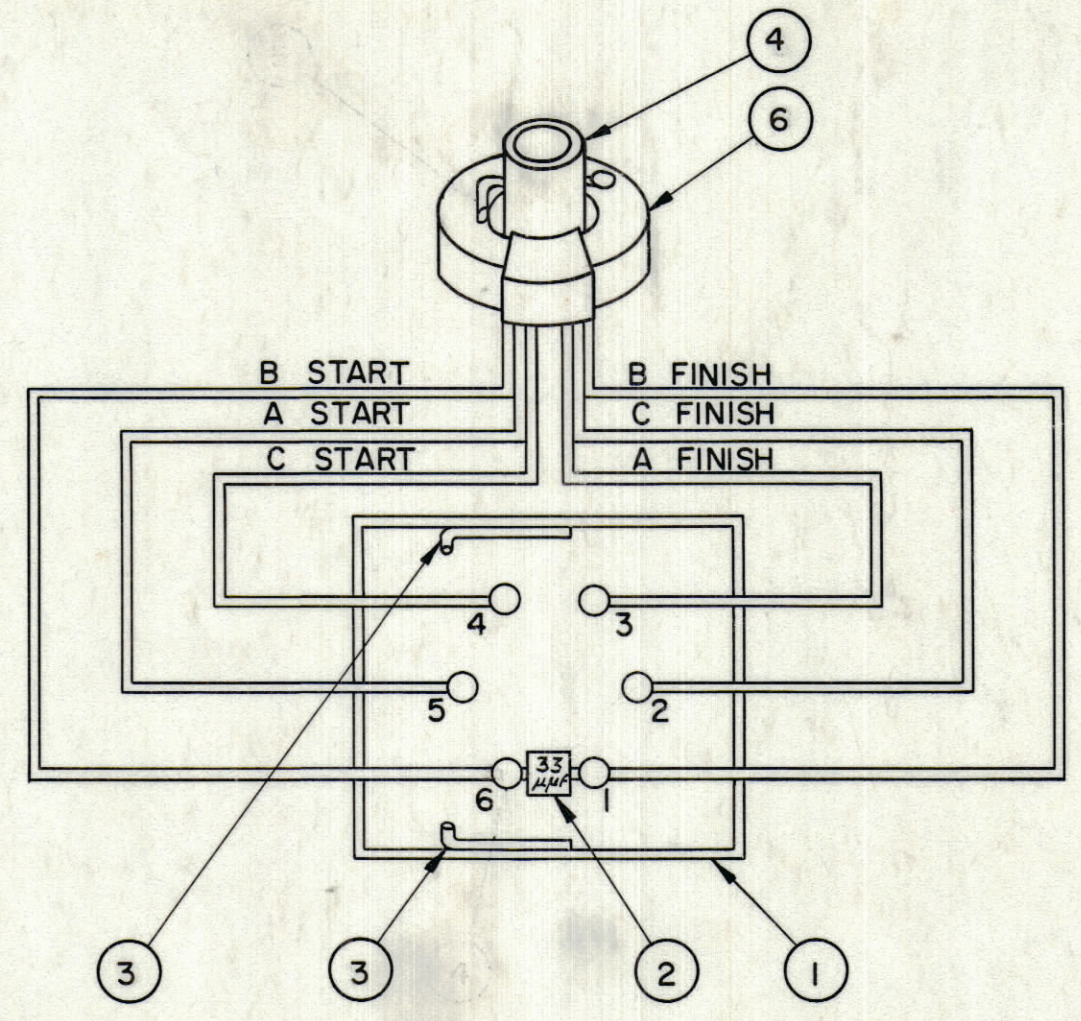


WINDING DATA

- TWO LAYERS OF MASKING TAPE ON CORE.
- LAY THREE CONDUCTORS ON TOP OF CORE AND SECURE.
- WIND THREE CONDUCTORS SIMULTANEOUSLY 6-3/4 TURNS ANTICLOCKWISE TO THE RIGHT. FINISHING AT BACK OF CORE. SECURE, APPLY RADIO CEMENT AND ALLOW TO DRY.
- PULL BACK THREE CONDUCTORS AT FINISH OF WINDING TO BOTTOM FRONT EDGE OF CORE. CONTINUE CENTRE CONDUCTOR ONLY, ADDITIONAL 1-1/4 TURNS TO THE RIGHT, ENDING AT BACK OF THE CORE. SECURE CONDUCTOR, APPLY RADIO CEMENT AND ALLOW TO DRY.
- PULL BACK CONDUCTOR AT FINISH OF WINDING TO BOTTOM FRONT EDGE OF THE CORE. FINISH END OF WINDING IS NOW COMPLETED.
- PULL BACK THREE CONDUCTORS AT START OF WINDING TO BOTTOM FRONT EDGE OF THE CORE. TAKE CENTRE CONDUCTOR ONLY AND CONTINUE TO WIND IT 2-1/2 TURNS CLOCKWISE TO THE LEFT, FINISHING AT FRONT OF CORE. SECURE CONDUCTOR, APPLY RADIO CEMENT AND ALLOW TO DRY.
- PULL BACK CONDUCTOR AT START OF WINDING TO BOTTOM FRONT EDGE OF THE CORE. WINDING IS NOW COMPLETE.

TEST LIMITS

FREQ. MC/S	V ₁	V ₂	V ₃ AND V ₄
2	1.0	.5 ± .05	> .30
28.0	1.0	.5 ± .05	> .30
MAXIMUM DIFFERENCE V ₃ V ₄			.05



NOTE
FOR POTTING, SEE S-10074

A 10 365 A

TOLERANCES		SCALE: NTS
ALL OTHERS	DEC. DIM. ± FRAC. DIM. ± ANGULAR DIM. ±	DRILL, PUNCH, COMMERCIAL STOCK SIZES AND MANUFACTURERS TOLERANCES ARE NOT INCLUDED.

AMC 20	020/66		21-7-1965
MODEL	PROJECT NO.	ASSY. NO.	DATE
USED ON			

STOCK SIZE		TMC (Canada) LIMITED OTTAWA ONTARIO	
MATERIAL		TRO 82	
TYPE & TEMPER		PRE-AMP INPUT XFMR.	
HEAT TREAT. SPEC.		M.S. DRAWN J.F. ELEC. RES. APP. R.B.S. MECH. DES. APP.	FINAL APPROVAL T.M.C.
FINISH & SPEC. NO.		CHECKED	A 10 365 A