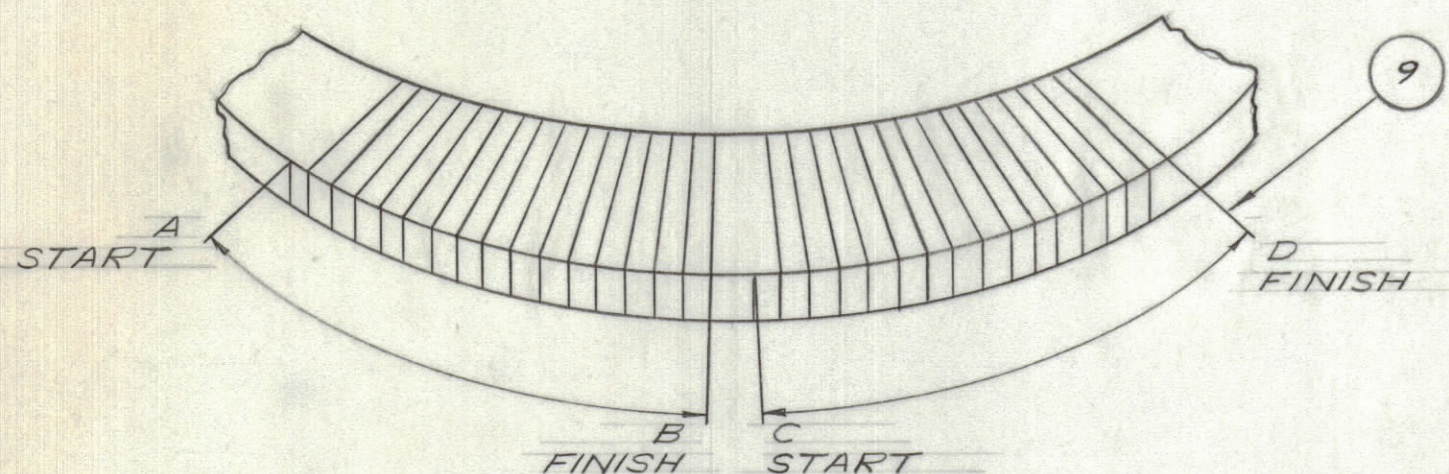


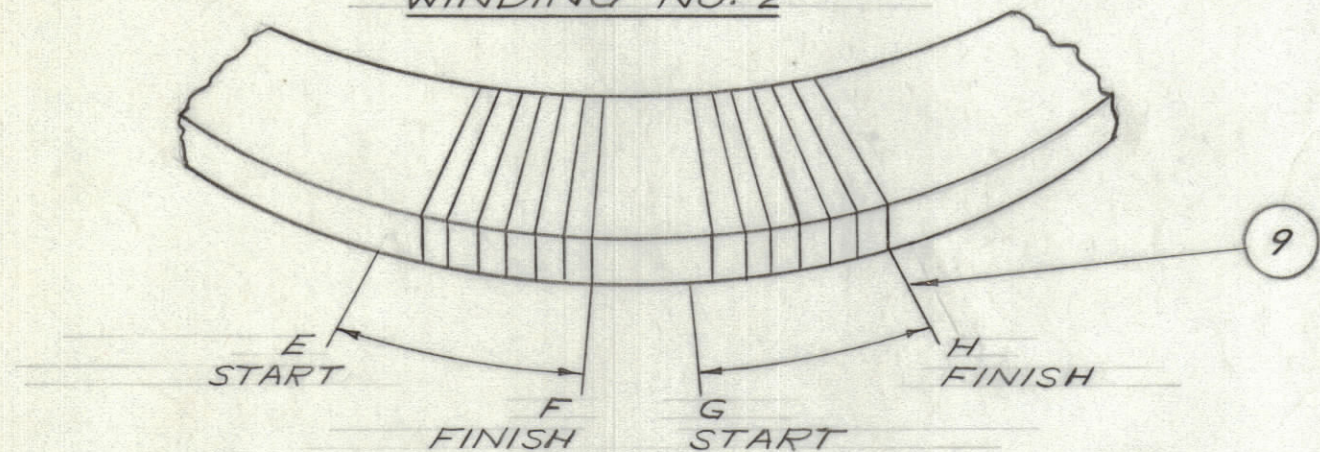
IF IT IS FOUND DESIRABLE TO CHANGE ANY TOLERANCE OR OTHER DETAIL SPECIFIED ON THIS DRAWING NOTIFY THE PURCHASER PROMPTLY.		DIMENSIONS IN INCHES UNLESS OTHERWISE SPECIFIED					
MAXIMUM ALLOWABLE TOLERANCES HAVE BEEN DETERMINED AND DEVIATIONS WILL BE CAUSE FOR REJECTION. REMOVE ALL BURRS AND SHARP EDGES.							
ISSUE	ITEM	CHANGED FROM	DATE	CN. NO.	DRAFTS	CHECKER	ENG. APP.
A	12	DELETED	3-2-65		RD		
B		REV PER CEMN	25-2-67	213	RD		

REQ.	ITEM	PART NO.	DESCRIPTION	SYMBOL
1	1	BX10015	CASE, TRANSFORMER	
1	2	CI10001-3	CORE, TRANSFORMER	
1	3	CF10012	FORM, COIL MOUNTING	
	4			
	5			
	6			
	7			
2	8	MS10259	STABILIZER	
AR	9	WI10007	WIRE, S.N., S.P. #30	
AR	10	TA10001-1	TAPE, TUCK, 3/8" WIDE	
AR	11	TA103-2	TAPE, MYLAR, 3/8" WIDE	
	12			
AR	13	GL10004	HYSOL EPOXY, COLD POTTING	

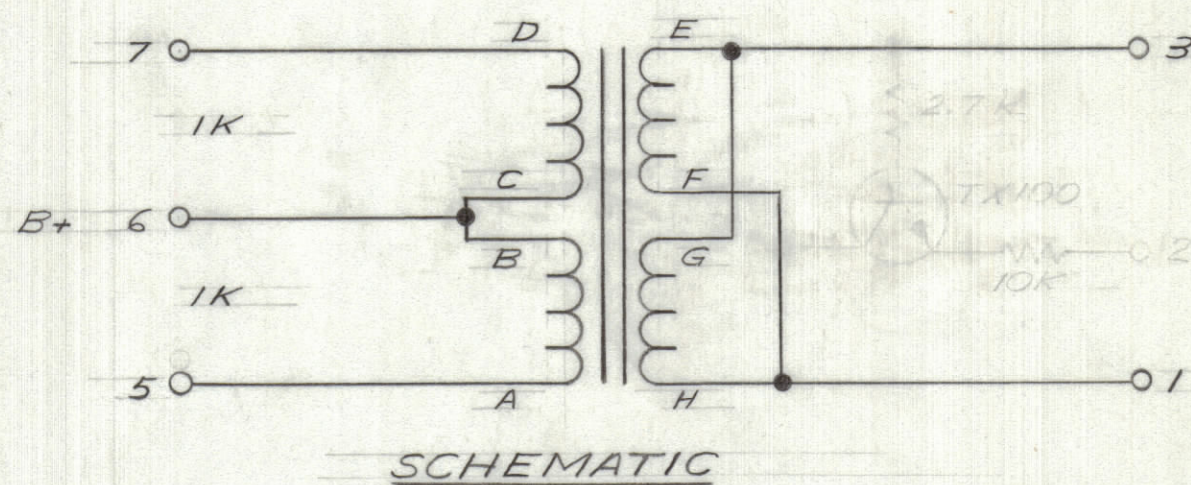
WINDING NO. 1  
ON CORE



WINDING NO. 2



- WIND TWO LAYERS OF MASKING TAPE ON CORE FOR EACH WINDING, ENSURE THAT TAPE IS TRUE CENTER OF CORE. THE TWO WINDS OF TAPE SHOULD BE APPROXIMATELY 80° RELATIVE TO EACH OTHER AND CLOSE TOGETHER ON THE INSIDE OF THE CORE.
- WIND 16 3/4 TURNS ANTICLOCKWISE TO THE RIGHT. SECURE WINDING, APPLY "Q" DOPE AND ALLOW TO DRY. PULL BACK START & FINISH OF WINDING TO TOP FRONT EDGE OF THE CORE.
- WIND ON TWO LAYERS OF CLEAR MYLAR TAPE.
- WIND 7 3/4 TURNS ANTICLOCKWISE TO THE RIGHT, ENSURING THAT THE TURN NEAREST THE CENTER OF THE TWO SECTIONS IS LAID EXACTLY ABOVE THE CORRESPONDING END TURN OF THE BOTTOM WINDING, AND THAT ALL WINDINGS ARE PARALLEL TO THE TURNS OF THE BOTTOM WINDING. SECURE WINDING, APPLY "Q" DOPE & ALLOW TO DRY. PULL BACK START & FINISH OF BOTTOM WINDING TO BOTTOM FRONT EDGE OF CORE.
- WIND ON TWO LAYERS OF MASKING TAPE. APPLY "Q" DOPE LIBERALLY TO SIDES OF WINDING & OVER TAPE.
- 2,3,4 & 5 IS APPLICABLE TO BOTH L.H. & R.H. WINDING.
- POT WITH ITEM 13 PER S10096

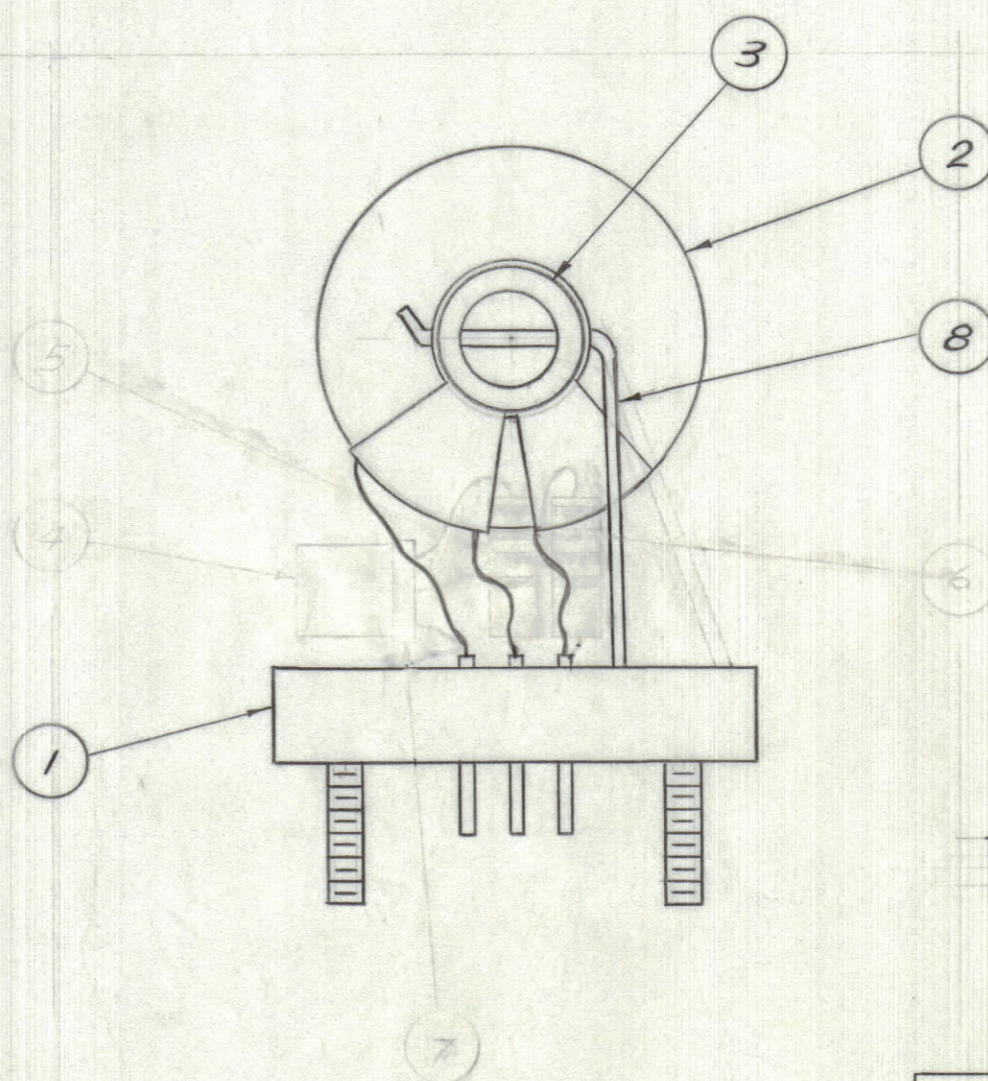


SCHMATIC

NOT TO BE RELEASED  
W/O AUTHORIZATION  
AUTH. BY: \_\_\_\_\_  
DATE: \_\_\_\_\_

NOT TO BE RELEASED  
W/O AUTHORIZATION  
AUTH. BY: \_\_\_\_\_  
DATE: \_\_\_\_\_

A10391 B



TEST LIMITS  
SEE SPEC S10099

TOLERANCES		SCALE: NTS
ALL OTHERS	DEC. DIM. ± FRAC. DIM. ± ANGULAR DIM. ±	DRILL, PUNCH, COMMERCIAL STOCK SIZES AND MANUFACTURERS TOLERANCES ARE NOT INCLUDED.

AMC 20	020/66	AX 10003	12 NOV 65
MODEL	PROJECT NO.	ASSY. NO.	DATE

STOCK SIZE		TMC (Canada) LIMITED OTTAWA ONTARIO	
MATERIAL		PRE-AMP OUTPUT XFMR	
WEIGHT PER PC.		C/W DL GATE	
TYPE & TEMPER		BG	
DRAWN		ELEC. DES. APP.	MECH. DES. APP.
HEAT TREAT. SPEC.		CHECKED	FINAL APPROVAL
FINISH & SPEC. NO.		A10391 B	