

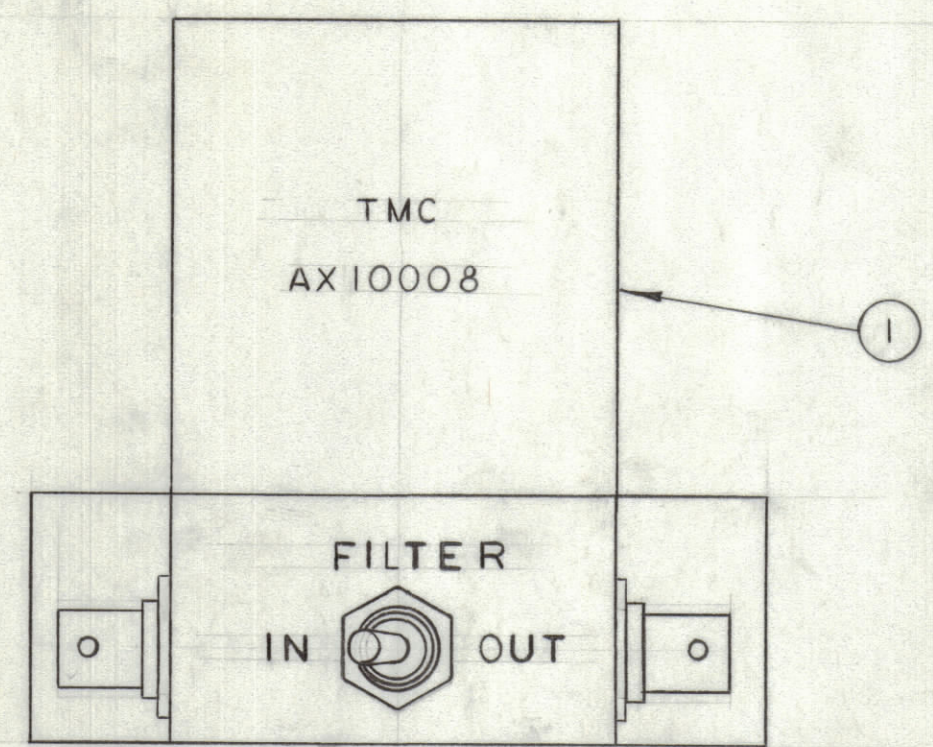
IF IT IS FOUND DESIRABLE TO CHANGE ANY TOLERANCE OR OTHER DETAIL SPECIFIED ON THIS DRAWING NOTIFY THE PURCHASER PROMPTLY.

MAXIMUM ALLOWABLE TOLERANCES HAVE BEEN DETERMINED AND DEVIATIONS WILL BE CAUSE FOR REJECTION. REMOVE ALL BURRS AND SHARP EDGES.

DIMENSIONS IN INCHES UNLESS OTHERWISE SPECIFIED

ISSUE	ITEM	CHANGED FROM	DATE	CN. NO.	DRAFTS	CHECKER	ENG. APP.

REQ.	ITEM	PART NO.	DESCRIPTION	SYMBOL
1	1	FX10003	FILTER, HIGH PASS	
1	2	BX10017	CAN, FILTER	
1	3	MS10638	PLATE, MOUNTING	
1	4	ST22N	SWITCH, TOGGLE	
2	5	UG625/BU	RECEPTACLE, BNC	
2	6	FW43HBN	WASHER, FLAT	
2	7	TE111-2	LUG, SOLDER	
4	8	EY-100-1	EYELET, FLAT FLANGE	
AR	9	WL100-7	WIRE, BUSS-BAR #22	
AR	10	PX104-1-.034	INSULATION SLEEVING, ELECTRICAL	

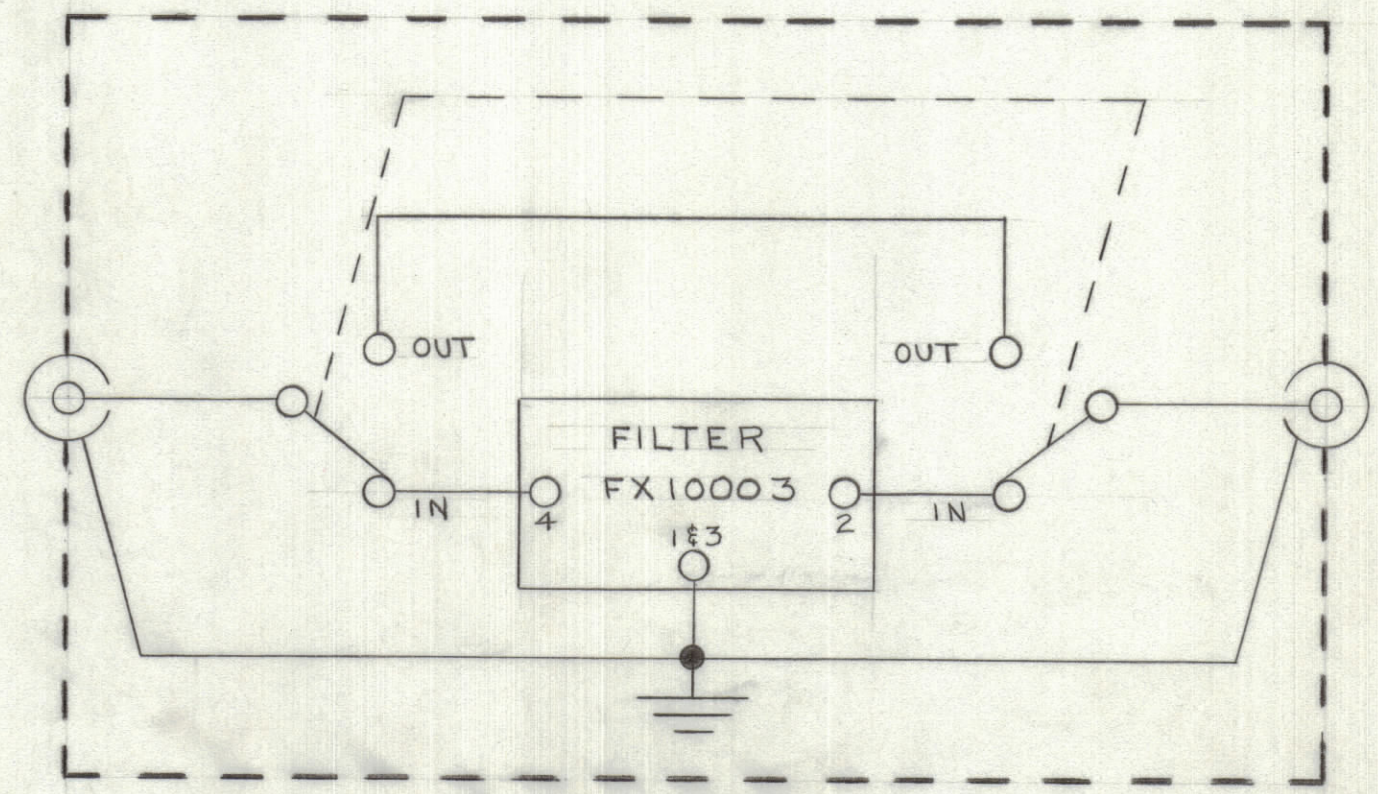
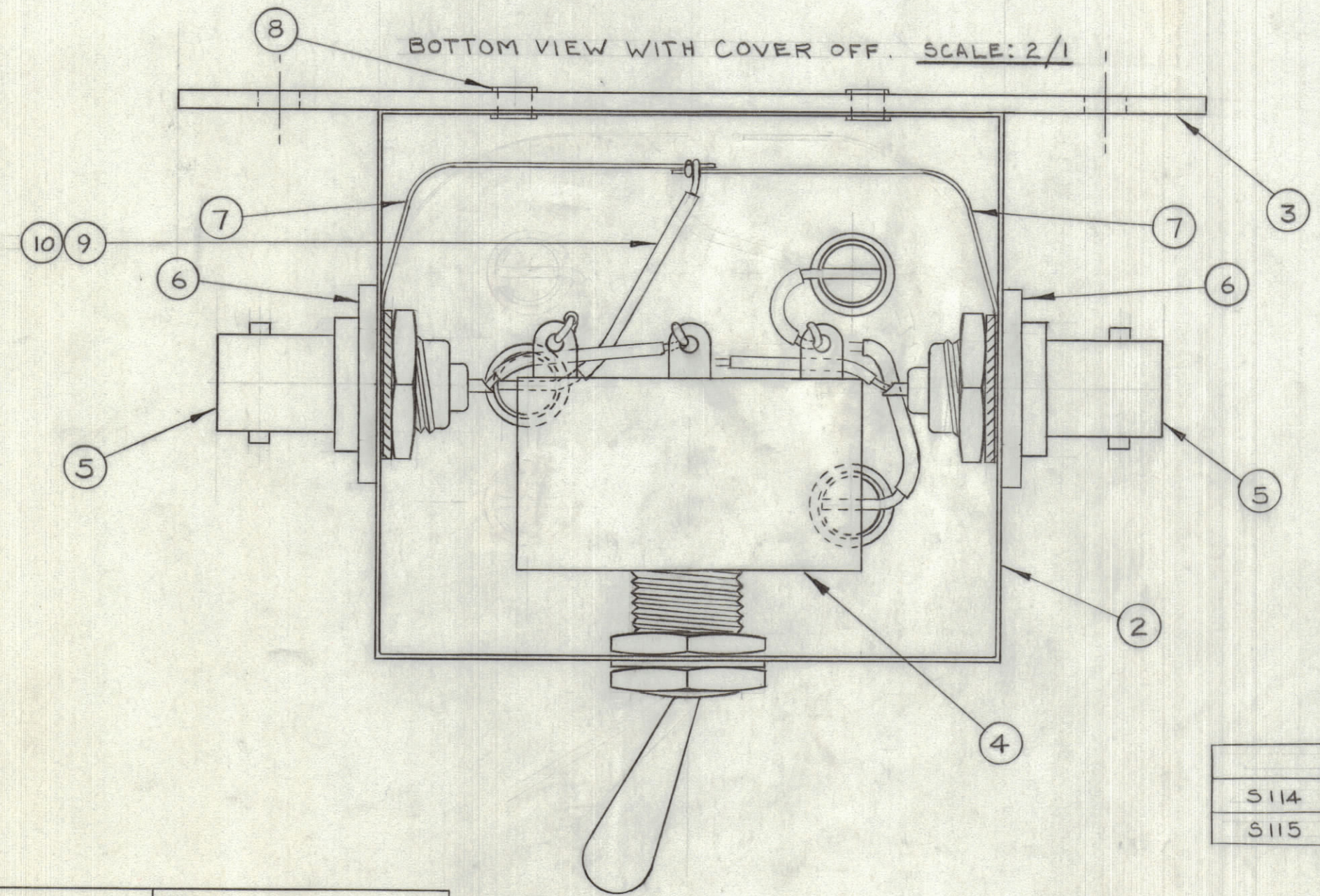


SCALE: 1/1

ASSEMBLING PROCEDURES

- (1) MOUNT MS10638 ON BX10017 USING ITEM 8
- (2) JUMP SWITCH TERMINALS
- (3) MOUNT WIRES ON UG625/BU, BNC CONNECTORS
- (4) MOUNT WIRES ON FX10003 TERMINALS
- (5) SOLDER FX10003 TO BX10017
- (6) MOUNT SWITCH & BNC CONNECTORS IN BX10017
- (7) CONNECT WIRES TO SWITCH & GROUND LUG

A10394 \emptyset



FINISH & SPEC. NO.
S114 ZINC CHROMATE PRIMER
S115 SMOOTH GRAY ENAMEL

STOCK SIZE		TMC (Canada) LIMITED OTTAWA ONTARIO	
MATERIAL		FILTER, BROADCAST BAND ASSEMBLY	
WEIGHT PER PC.		RL	
TYPE & TEMPER		DRAWN	ELEC. DES. APP.
HEAT TREAT. SPEC.		CHECKED	MECH. DES. APP.
FINISH & SPEC. NO.		FINAL APPROVAL	

MODEL	PROJECT NO.	ASS'Y. NO.	DATE
036/66	AX10008	DEC. 10/65	

TOLERANCES		SCALE:
ALL OTHERS	DEC. DIM. \pm FRAC. DIM. \pm ANGULAR DIM. \pm	DRILL, PUNCH, COMMERCIAL STOCK SIZES AND MANUFACTURERS TOLERANCES ARE NOT INCLUDED.