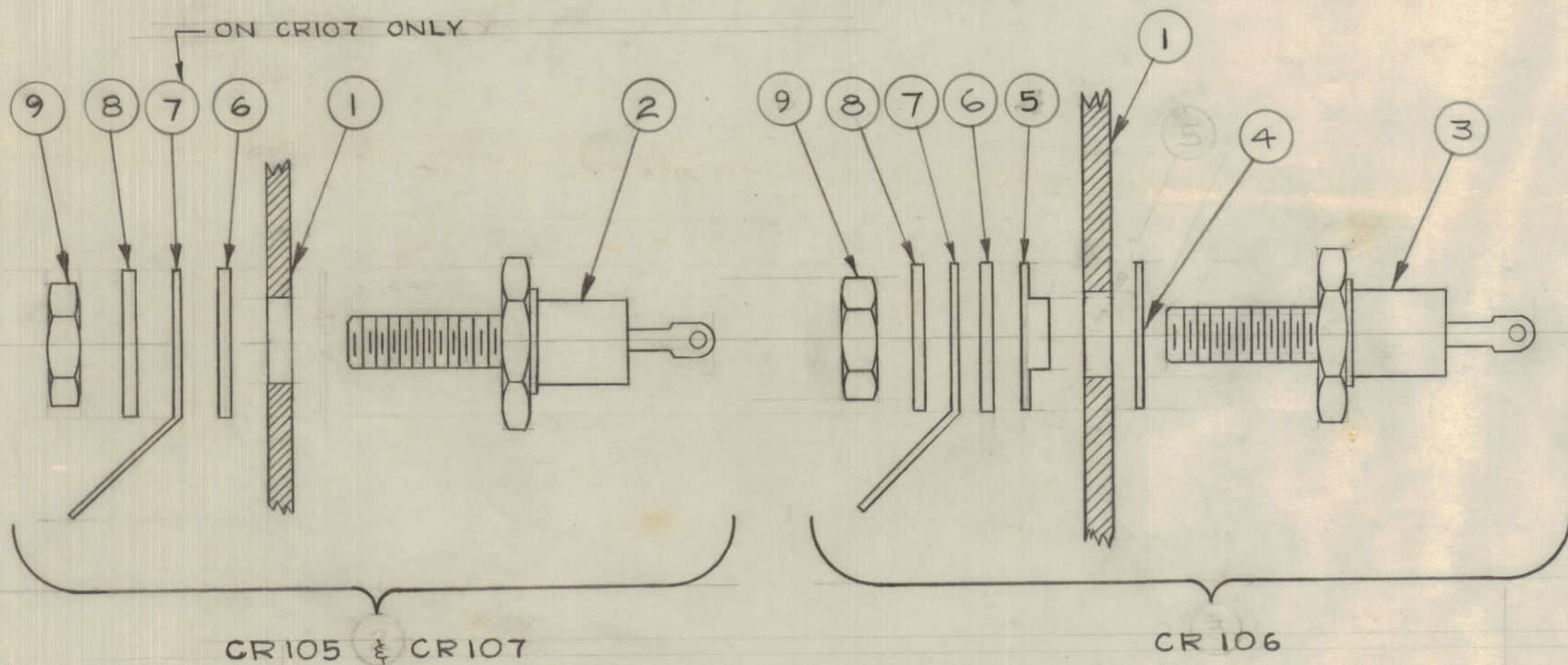
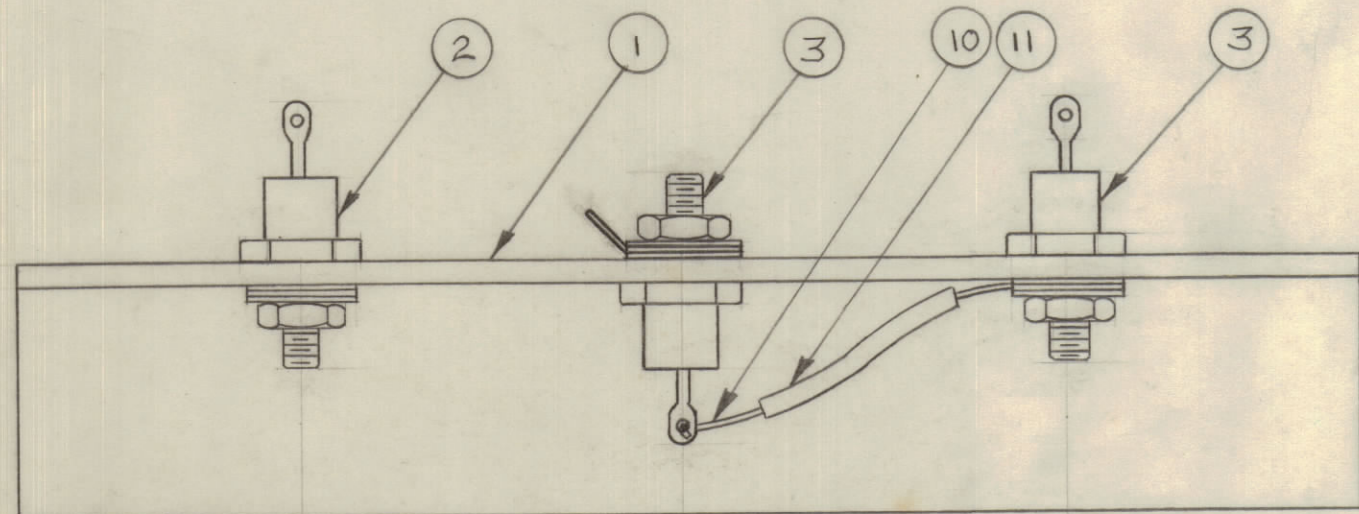


IF IT IS FOUND DESIRABLE TO CHANGE ANY TOLERANCE OR OTHER DETAIL SPECIFIED ON THIS DRAWING NOTIFY THE PURCHASER PROMPTLY.					DIMENSIONS IN INCHES UNLESS OTHERWISE SPECIFIED		
MAXIMUM ALLOWABLE TOLERANCES HAVE BEEN DETERMINED AND DEVIATIONS WILL BE CAUSE FOR REJECTION. REMOVE ALL BURRS AND SHARP EDGES.					OTHERWISE SPECIFIED		
ISSUE	ITEM	CHANGED FROM	DATE	CN. NO.	DRAFTS	CHECKER	ENG. APP.
Ø		RELEASED TO PROD	1-4-66				

REQ.	ITEM	PART NO.	DESCRIPTION	SYMBOL
1	1	LD10198/MS10658	HEAT, SINK	
1	2	1N3011RB	DIODE, ZENER	
2	3	1N3014B	DIODE, ZENER	
1	4		WASHER, MICA	
1	5		WASHER, FIBRE, SHOULDER	
3	6	FW10HBN	WASHER, FLAT	
2	7		LUG, TERMINAL	
3	8		WASHER, LOCK INTERNAL	
3	9		NUT, HEX.	
2"	10	WL100-7	WIRE, BUSS	
1½"	11	PX104-3-034	SLEEVING, INSULATED	
AR	12	DOW CORNING#4	GREASE, SILICON	
AR	13	BS-100	SOLDER, SOFT	

SEE NOTE "1"

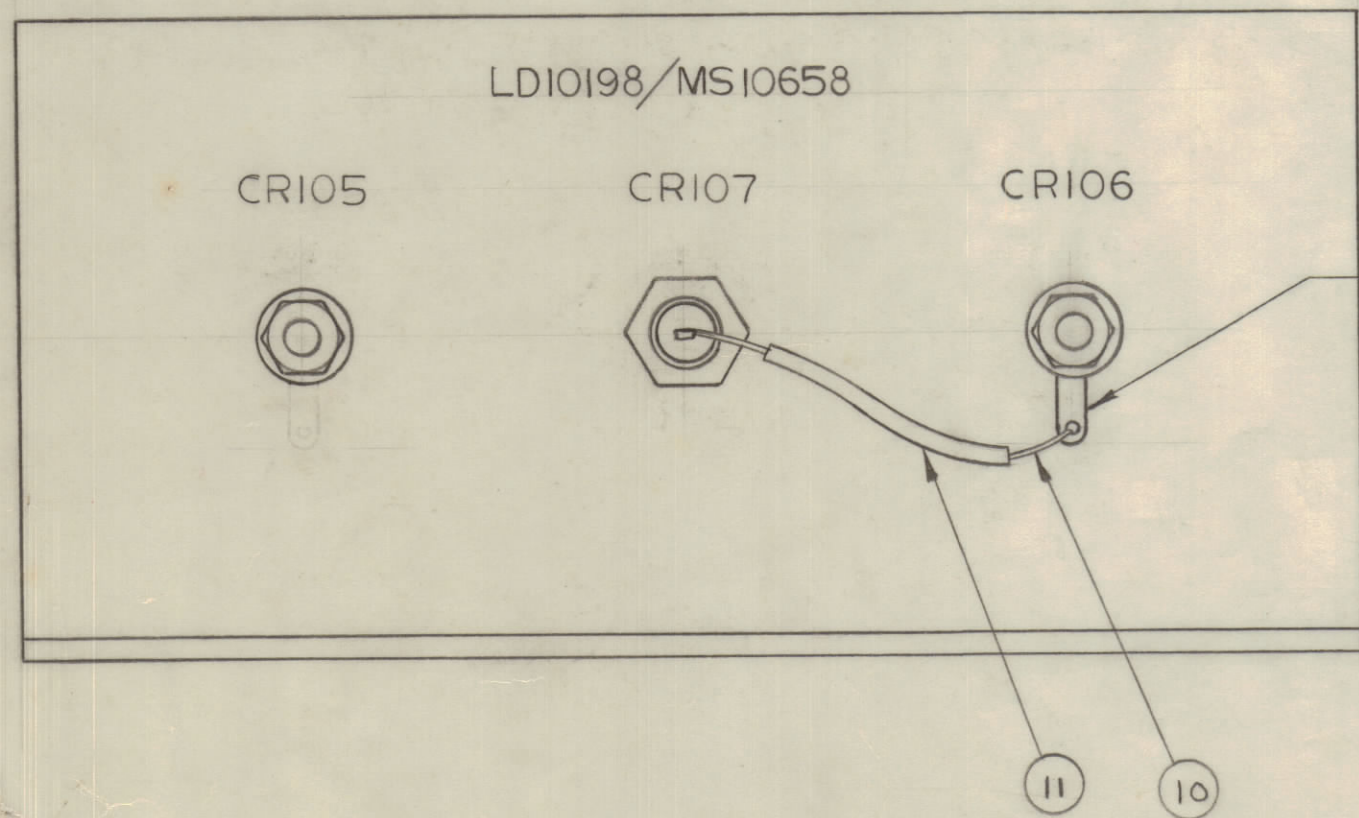


INSPECTION

MECHANICAL - CHECK FOR GOOD WORKMANSHIP IN ASSEMBLY.
 NO DIRT BETWEEN MICA WASHER, DIODE OR HEATSINK.
 INSULATION OF DIODES AS NOTED ON BLOWN UP VIEWS

ELECTRICAL - CHECK INSULATION RESISTANCE WITH OHMMETER BETWEEN EACH DIODE CASE AND GROUND.
 (A) FOR CR105 & CR107 RESISTANCE IS ZERO.
 (B) FOR CR106 RESISTANCE IS INFINITE

A10407 Ø



NOTES:

- (1) ITEMS 4 TO 9 SUPPLIED BY DIODE MFR. WITH DIODE
- (2) ASSEMBLE WITH SILICON GREASE BETWEEN HEAT SINK, WASHERS AND DIODE
- (3) TIGHTEN DIODE STUDS & NUTS TO 10 INCH/POUNDS TORQUE
- (4) POSITION OF LUGS NOT CRITICAL

TOLERANCE	SCALE: NTS.
ALL OTHERS	DRILL, PUNCH, COMMERCIAL STOCK SIZES AND MANUFACTURERS TOLERANCES ARE NOT INCLUDED.

PSP 500	028/66	A 10401	MARCH 28/66
MODEL	PROJECT NO.	ASS'Y. NO.	DATE
USED ON			

STOCK SIZE		TMC (Canada) LIMITED OTTAWA ONTARIO	
MATERIAL		ASSY, HEAT SINK	
WEIGHT PER PC.			
TYPE & TEMPER		RPL	
DRAWN		ELEC. DES. APP.	MECH. DES. APP.
HEAT TREAT. SPEC.		CHECKED	FINAL APPROVAL
FINISH & SPEC. NO.		ARCHARD	A10407 Ø